

## List of pages in this Trip Kit

Trip Kit Index

Airport Information For MUHA

Terminal Charts For MUHA

Revision Letter For Cycle 11-2024

Change Notices

Notebook

## General Information

Location: HAVANA CUB  
ICAO/IATA: MUHA / HAV  
Lat/Long: N22° 59.35', W082° 24.55'  
Elevation: 210 ft

Airport Use: Public  
Daylight Savings: Observed  
UTC Conversion: +5:00 = UTC  
Magnetic Variation: 5.0° W

Fuel Types: 100-130 Octane, Jet A-1  
Repair Types: Major Airframe, Major Engine  
Customs: Yes  
Airport Type: IFR  
Landing Fee: Yes  
Control Tower: Yes  
Jet Start Unit: Yes  
LLWS Alert: No  
Beacon: Yes

Sunrise: 1044 Z  
Sunset: 0011 Z

## Runway Information

Runway: 06  
Length x Width: 13123 ft x 148 ft  
Surface Type: concrete  
TDZ-Elev: 210 ft  
Lighting: Edge, ALS  
Stopway: 197 ft

Runway: 24  
Length x Width: 13123 ft x 148 ft  
Surface Type: concrete  
TDZ-Elev: 210 ft  
Lighting: Edge, ALS  
Stopway: 197 ft

## Communication Information

ATIS: 132.500  
Marti Tower: 118.100  
Marti Tower: 121.900 Secondary  
Marti Ground: 121.900  
Marti Ground: 118.100 Secondary  
Havana Approach: 119.350 Secondary  
Havana Approach: 120.300  
Boyerros Radio: 556.200 Air-Ground

Boyer's Radio: 1132.100 Air-Ground  
Boyer's Radio: 887.600 Air-Ground  
Boyer's Radio: 126.900 Air-Ground

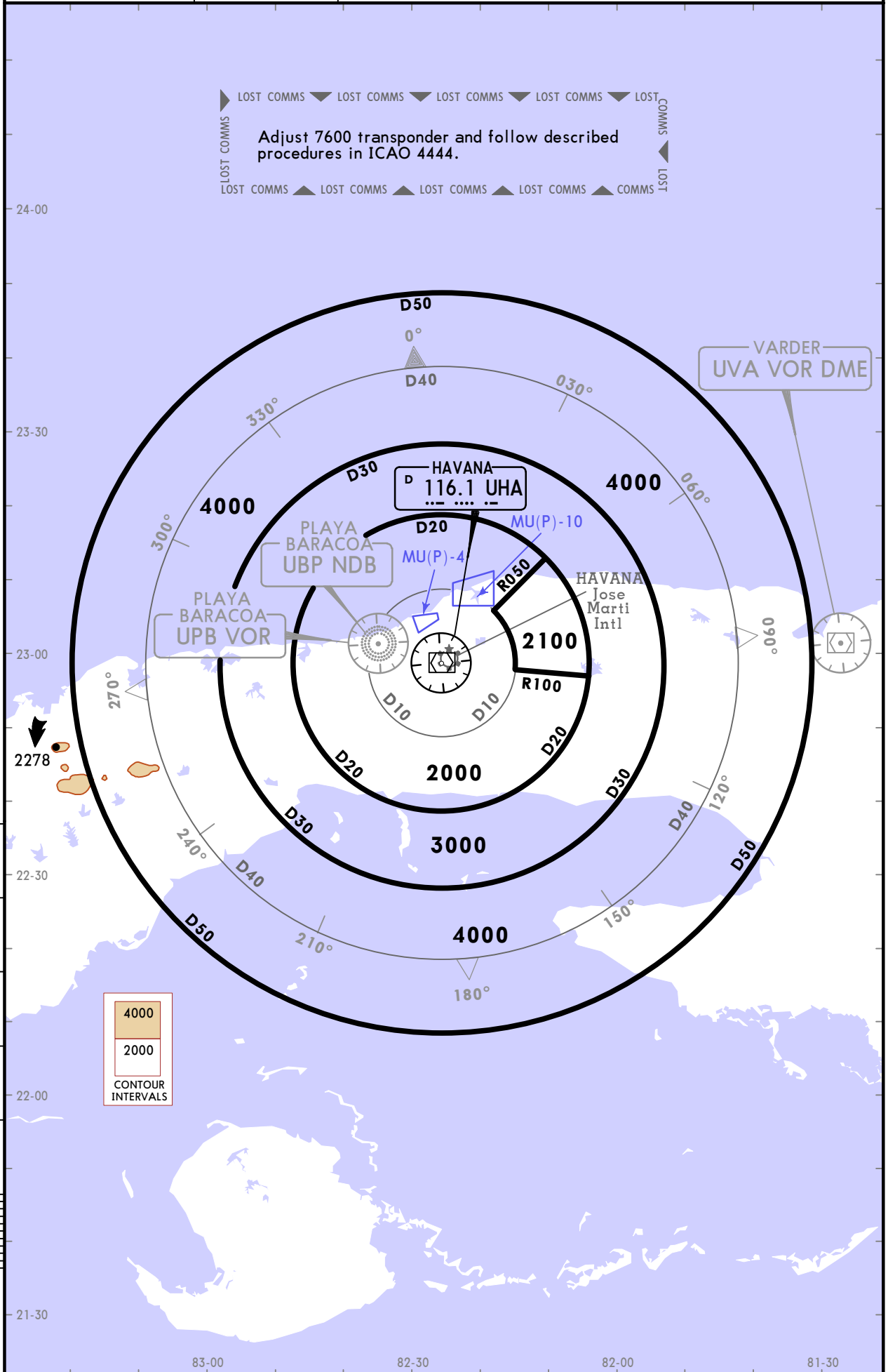
# MUHA/HAV JOSE MARTI INTL

**JEPPESSEN**  
10 DEC 21 (10-1R)

# HAVANA, CUBA

**RADAR MINIMUM ALTITUDES**

HAVANA Approach (R) <b>120.3</b>	Apt Elev <b>210</b>	Alt Set: hPa Trans level: By ATC Trans alt: 3000 Remark: Exclusive use chart to verify assigned altitude to identified aircraft.
-------------------------------------	------------------------	---



CHANGES: Sector radial revised.

ATIS  
132.5

Apt Elev  
210

Alt Set: hPa Trans level: By ATC  
RNAV-1

ALMIT1 [ALMIT1]  
EPMAR4 [EPMAR4]  
FARAC5 [FARAC5]  
KAVUL4B [KAVUL4B]  
RNAV CDO ARRIVALS  
(RWY 24)

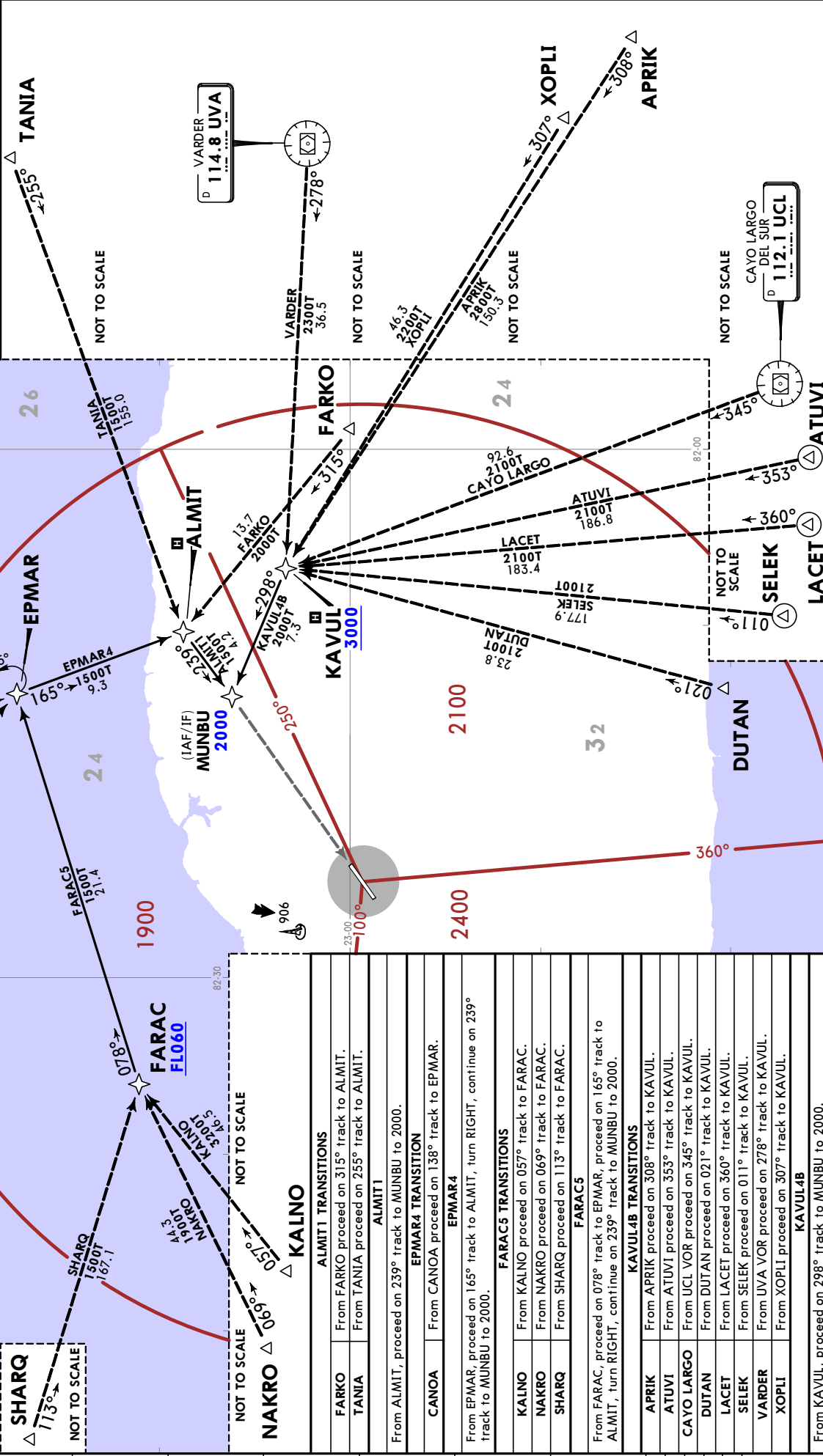
**KAVUL**  
1 Min or 4.1 NM  
MAX 230 KT  
MAX FL140  
MHA 3000

**ALMIT**  
1 Min or 4.1 NM  
MAX 230 KT  
MAX FL140  
MHA 3000

**EPMAR**  
1 Min or 4.1 NM  
MAX 230 KT  
MAX FL140  
MHA 3000

**CANOA**  
NOT TO SCALE

LOST COMMS  
Active SSR 7600 and proceed according to ICAO Annex 2 and Doc.4444.  
LOST COMMS



ALMIT1 TRANSITIONS	
FARKO	From FARKO proceed on 315° track to ALMIT.
TANIA	From TANIA proceed on 255° track to ALMIT.
From ALMIT, proceed on 239° track to MUNBU to 2000.	
EPMAR4 TRANSITION	
CANOA	From CANOA proceed on 138° track to EPMAR.
From EPMAR, proceed on 165° track to ALMIT, turn RIGHT, continue on 239° track to MUNBU to 2000.	
FARAC5 TRANSITIONS	
KALNO	From KALNO proceed on 057° track to FARAC.
NAKRO	From NAKRO proceed on 069° track to FARAC.
SHARQ	From SHARQ proceed on 113° track to FARAC.
From FARAC, proceed on 078° track to EPMAR, proceed on 165° track to ALMIT, turn RIGHT, continue on 239° track to MUNBU to 2000.	
KAVUL4B TRANSITIONS	
APRIK	From APRIK proceed on 308° track to KAVUL.
ATUVI	From ATUVI proceed on 353° track to KAVUL.
CAYO LARGO	From UCL VOR proceed on 345° track to KAVUL.
DUTAN	From DUTAN proceed on 021° track to KAVUL.
LACET	From LACET proceed on 360° track to KAVUL.
SELEK	From SELEK proceed on 011° track to KAVUL.
VARDER	From UVA VOR proceed on 278° track to KAVUL.
XOPLI	From XOPLI proceed on 307° track to KAVUL.
From KAVUL, proceed on 298° track to MUNBU to 2000.	

CHANGES: EPMAR2 renumbered to EPMAR4, MAXIM transition withdrawn, CANOA transition established, waypoints ALMIT, EPMAR, FARAC, KAVUL, MUNBU restrictions revised.

25 NOV 22 (10-2A) Eff 1 Dec

JEPPESEN

MUHA/HAV  
JOSE MARTI INTL

HAVANA, CUBA

RNAV STAR

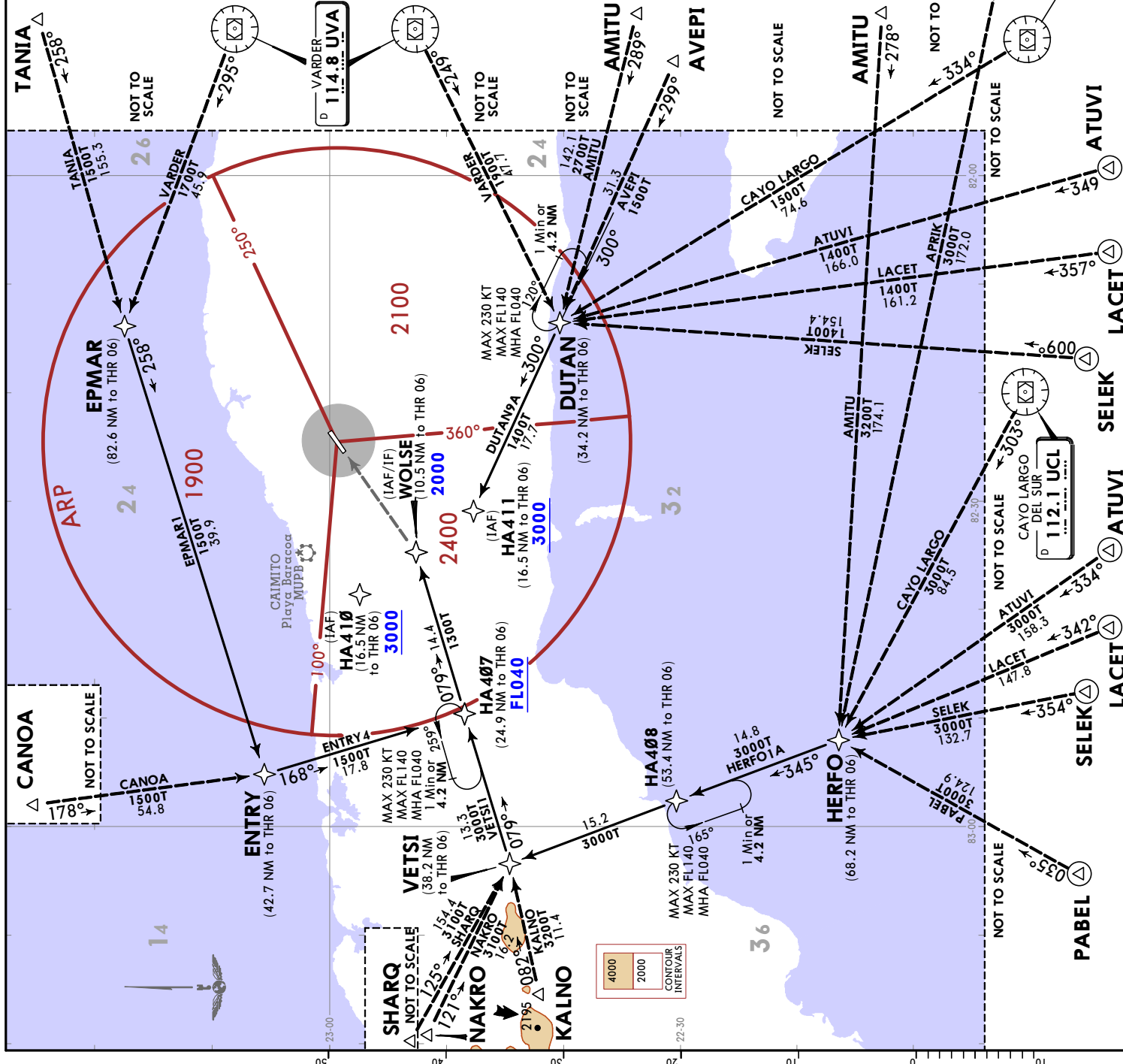
ATIS	Apt Elev	Alt Set: hPa	Trans level: By ATC
132.5	210	RNAV-1	

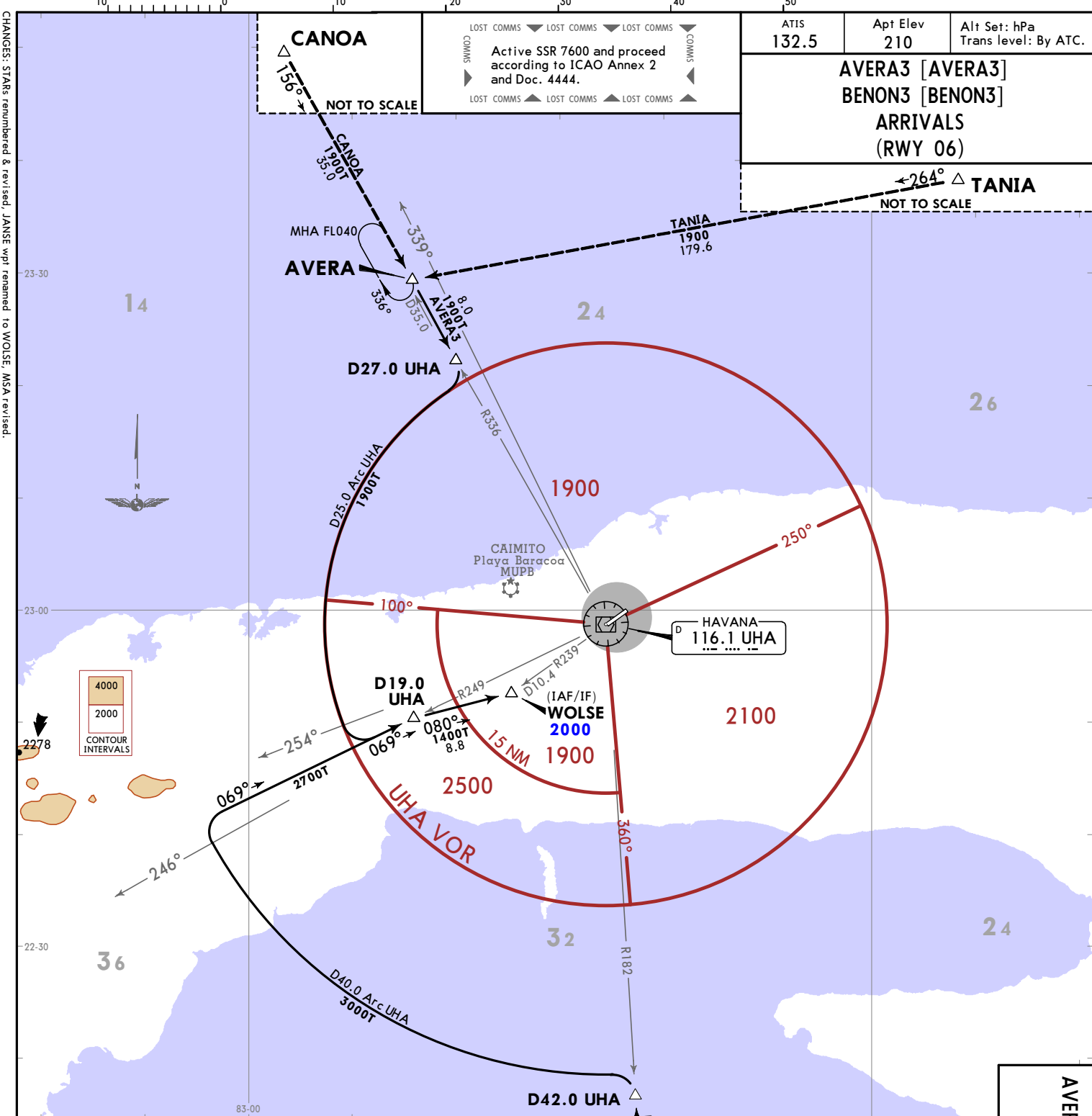
DUTAN9A [DUTA9A], ENTRY4 [ENTRY4]	
EPMAR1 [EPMAR1], HERFO1A [HERF1A]	VETS11 [VETS11]

RNAV CDO ARRIVALS (RWY 06)	
DUTAN9A TRANSITIONS	
AMITU	From AMITU proceed on 289° track to DUTAN.
ATUVI	From ATUVI proceed on 349° track to DUTAN.
AVEPI	From AVEPI proceed on 299° track to DUTAN.
CAYO LARGO	From UCL VOR proceed on 334° track to DUTAN.
LACET	From LACET proceed on 357° track to DUTAN.
SELEK	From SELEK proceed on 009° track to DUTAN.
VARDER	From UVA VOR proceed on 249° track to DUTAN.
DUTAN9A	
From DUTAN proceed on 300° track to HA411, at or above 3000.	
ENTRY4 TRANSITION	
CANOA	From CANOA proceed on 178° track to ENTRY.
ENTRY4	
From ENTRY proceed on 168° track to HA407, turn LEFT, continue on 079° track until WOLSE to 2000.	
EPMAR1 TRANSITIONS	
TANIA	From TANIA proceed on 258° track to EPMAR.
VARDER	From UVA VOR proceed on 295° track to EPMAR.
EPMAR1	
From EPMAR proceed on 258° track to ENTRY, continue on 168° track to HA407, turn LEFT, continue on 079° track to WOLSE to 2000.	
HERFO1A TRANSITIONS	
AMITU	From AMITU proceed on 278° track to HERFO.
APRIK	From APRIK proceed on 287° track to HERFO.
ATUVI	From ATUVI proceed on 334° track to HERFO.
CAYO LARGO	From UCL VOR proceed on 303° track to HERFO.
LACET	From LACET proceed on 342° track to HERFO.
PABEL	From PABEL proceed on 035° track to HERFO.
SELEK	From SELEK proceed on 354° track to HERFO.
HERFO1A	
From HERFO, proceed on 345° track to HA408, continue on track 345° to VETS1, turn RIGHT, proceed on 079° track to HA407, continue on 079° track to WOLSE to 2000.	
VETS11 TRANSITIONS	
KALNO	From KALNO proceed on 082° track to VETS1.
NAKRO	From NAKRO proceed on 121° track to VETS1.
SHARQ	From SHARQ proceed on 125° track to VETS1.
VETS11	
From VETS1, proceed on 079° track until HA407, continue on 079° track until WOLSE to 2000.	

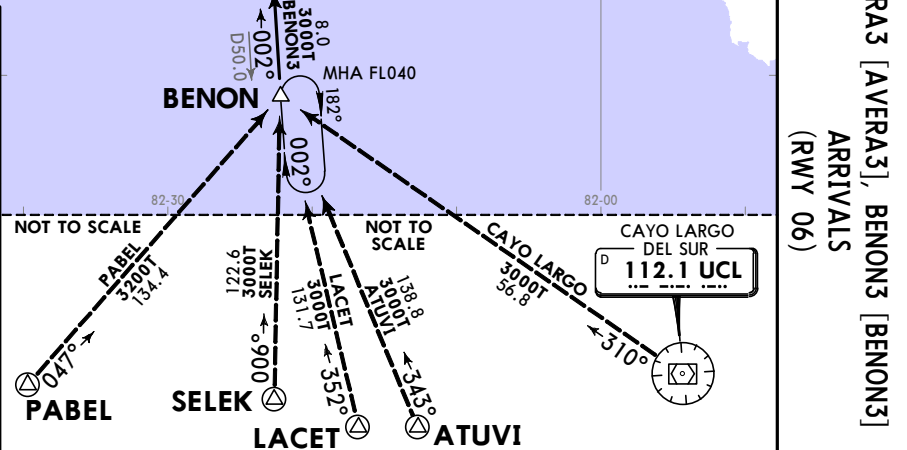


MUHA/HAV  
JOSE MARTI INTL



ATIS 132.5	Apt Elev 210	Alt Set: hPa Trans level: By ATC.
<b>AVERA3 [AVERA3]</b> <b>BENON3 [BENON3]</b> <b>ARRIVALS</b> <b>(RWY 06)</b>		
<b>TANIA</b> 1900 179.6 NOT TO SCALE		

AVERA3 TRANSITIONS	
<b>CANOA</b>	From CANOA proceed on 156° track to AVERA.
<b>TANIA</b>	From TANIA proceed on 264° track to AVERA.
AVERA3	
From AVERA, proceed on UHA R336 to D27.0 UHA, turn RIGHT and intercept D25.0 Arc UHA to intercept UHA R249. Continue on UHA R249 to D19.0 UHA, proceed on 080° track to WOLSE to 2000.	
BENON3 TRANSITIONS	
<b>ATUVI</b>	From ATUVI proceed on 343° track to BENON.
<b>CAYO LARGO</b>	From UCL VOR proceed on 310° track to BENON.
<b>LACET</b>	From LACET proceed on 352° track to BENON.
<b>PABEL</b>	From PABEL proceed on 047° track to BENON.
<b>SELEK</b>	From SELEK proceed on 006° track to BENON.
BENON3	
From BENON, proceed on UHA R182 to D42.0 UHA, turn LEFT and intercept D40.0 Arc UHA to intercept UHA R249. Continue on UHA R249 to D19.0 UHA, proceed on 080° track to WOLSE to 2000.	



<b>AVERA3 [AVERA3], BENON3 [BENON3]</b> <b>ARRIVALS</b> <b>(RWY 06)</b>	
<b>CAYO LARGO DEL SUR</b> D 112.1 UCL	

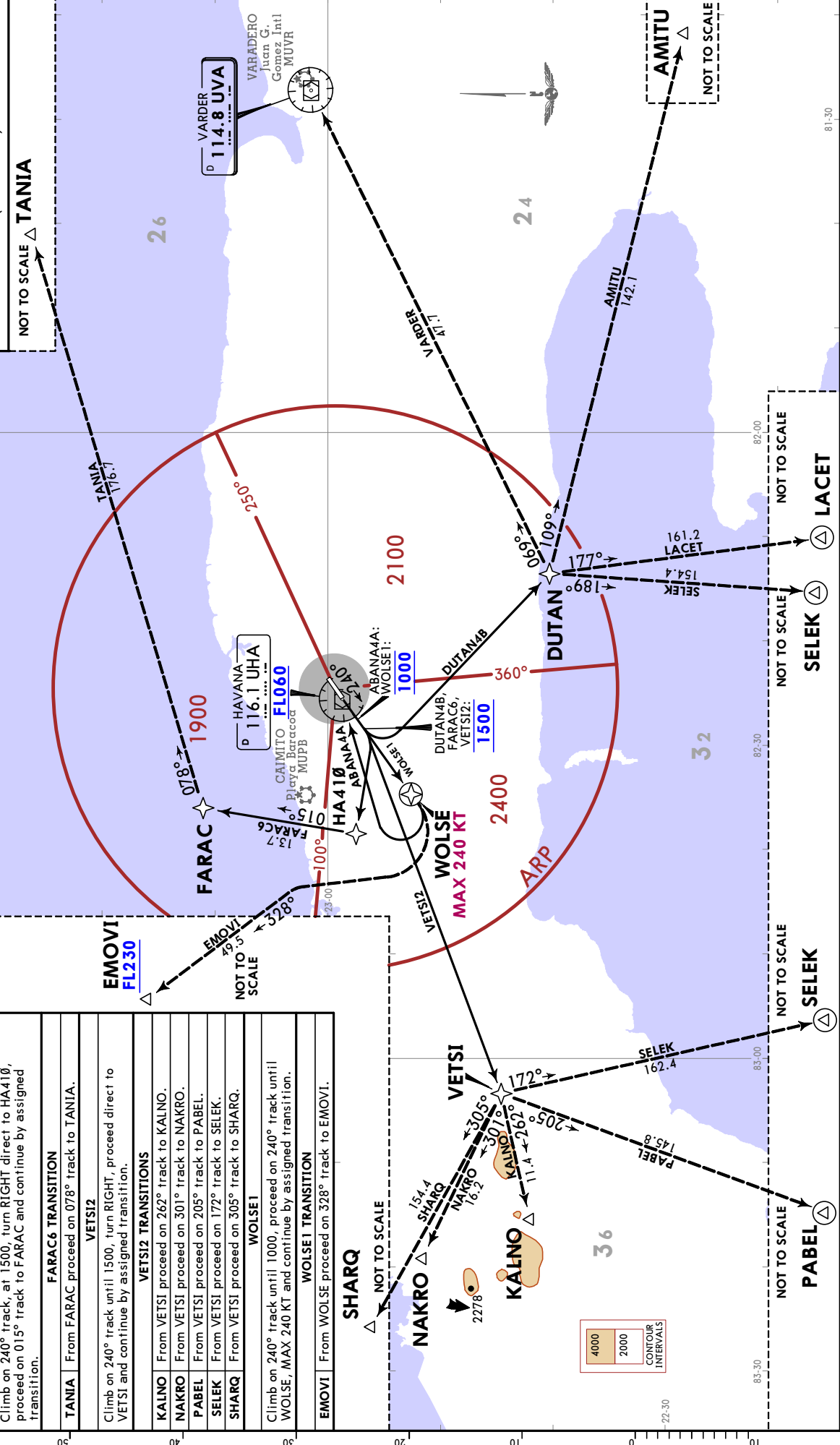
CHANGES: STARS renumbered & revised, JANSE wpt remained, to WOLSE, MSA revised.

24 DEC 21 (10-2B) EHI 30 Dec  
**JEPPESSEN HAVANA, CUBA**  
 STAR



**MUHA/HAV**  
JOSE MARTI INTL  
**JEJEPSEN HAVANA, CUBA**  
RNAV SID 10-3  
12 MAY 23

Trans alt: 3000  
Apt Elev 210  
RNAV-1  
ABANA4A [ABAN4A]  
DUTAN4B [DUTA4B]  
FARAC6 [FARAC6]  
VETS12 [VETS12]  
WOLSE1 [WOLSE1]  
RNAV CCO DEPARTURES (RWY 24)  
NOT TO SCALE TANIA



LOST COMMS  
Within 5 minutes after takeoff, and if it is convenient to continue the flight, activate SSR 7600, continue on assigned SID and/or route, climb to FL160 or the requested flight level in flight plan, whichever is lower. 10 minutes after takeoff, climb to the requested flight level in flight plan if it is higher than FL160, except aircraft overflying MAXIM climb only to FL250 and overflying TANIA climb only to FL280.  
LOST COMMS

**ABANA4A**  
Climb on 240° track until 1000, continue on 240° track until WOLSE, MAX 240 KT, turn RIGHT direct to UHA VOR at or above FL060, and continue by assigned route as flight plan.  
**DUTAN4B**  
Climb on 240° track until 1500, turn LEFT direct to DUTAN and continue by route or assigned transition.  
**DUTAN4B TRANSITIONS**  
**AMITU** From DUTAN proceed on 109° track to AMITU.  
**LACET** From DUTAN proceed on 177° track to LACET.  
**SELEK** From DUTAN proceed on 189° track to SELEK.  
**VARDER** From DUTAN proceed on 069° track to UVA VOR.  
**FARAC6**  
Climb on 240° track, at 1500, turn RIGHT direct to HA410, proceed on 015° track to FARAC and continue by assigned transition.  
**TANIA** From FARAC proceed on 078° track to TANIA.  
**FARAC6 TRANSITION**  
**VETS12**  
Climb on 240° track until 1500, turn RIGHT, proceed direct to VETS1 and continue by assigned transition.  
**VETS12 TRANSITIONS**  
**KALNO** From VETS1 proceed on 262° track to KALNO.  
**NAKRO** From VETS1 proceed on 301° track to NAKRO.  
**PABEL** From VETS1 proceed on 205° track to PABEL.  
**SELEK** From VETS1 proceed on 172° track to SELEK.  
**SHARQ** From VETS1 proceed on 305° track to SHARQ.  
**WOLSE1**  
Climb on 240° track until 1000, proceed on 240° track until WOLSE, MAX 240 KT and continue by assigned transition.  
**WOLSE1 TRANSITION**  
**EMOVI** From WOLSE proceed on 328° track to EMOVI.



12 MAY 23 10-3A  
**JEYPESEN**

MUHA/HAV  
 JOSE MARTI INTL

HAVANA, CUBA  
**RNAV SID**

Apt Elev 210  
 RNAV-1  
 Trans alt: 3000

**ABANA4C [ABAN4C]**  
**ALMIT2 [ALMIT2]**  
**EPMAR3 [EPMAR3]**  
**KAVUL5A [KAVU5A]**  
**RNAV CCO DEPARTURES (RWY 06)**

▲ **TANIA**  
 NOT TO SCALE

▲ **VARADER**  
 114.8 UVA  
 Juan G. Gomez Intl

▲ **XOPLI**  
 112.1 UCL  
 Cayo Largo del Sur

▲ **APRIK**  
 150.3

▲ **LACET**  
 183.4

▲ **SELEK**  
 177.9

▲ **MAXIM**  
 45.3

▲ **EMOVI**  
 51.3

▲ **MUPKI**  
 162.0

▲ **ABANA4C**  
 From ALMIT proceed on 075° track to TANIA.

▲ **ALMIT2**  
 Climb on 060° track until 2000, proceed direct to ALMIT and continue by assigned transition.

▲ **ALMIT2 TRANSITION**  
 From ALMIT proceed on 075° track to TANIA.

▲ **EPMAR3**  
 Climb on 060° track until 2000, proceed direct to ALMIT, turn LEFT, continue on 345° track to EPMAR and continue by assigned transition.

▲ **EPMAR3 TRANSITIONS**  
 EMOVI From EPMAR proceed on 292° track to EMOVI.  
 MAXIM From EPMAR proceed on 345° track to MAXIM.  
 MUPKI From EPMAR proceed on 261° track to MUPKI.

▲ **KAVUL5A**  
 Climb on 060° track until 2000, turn RIGHT direct to KAVUL and continue by assigned transition.

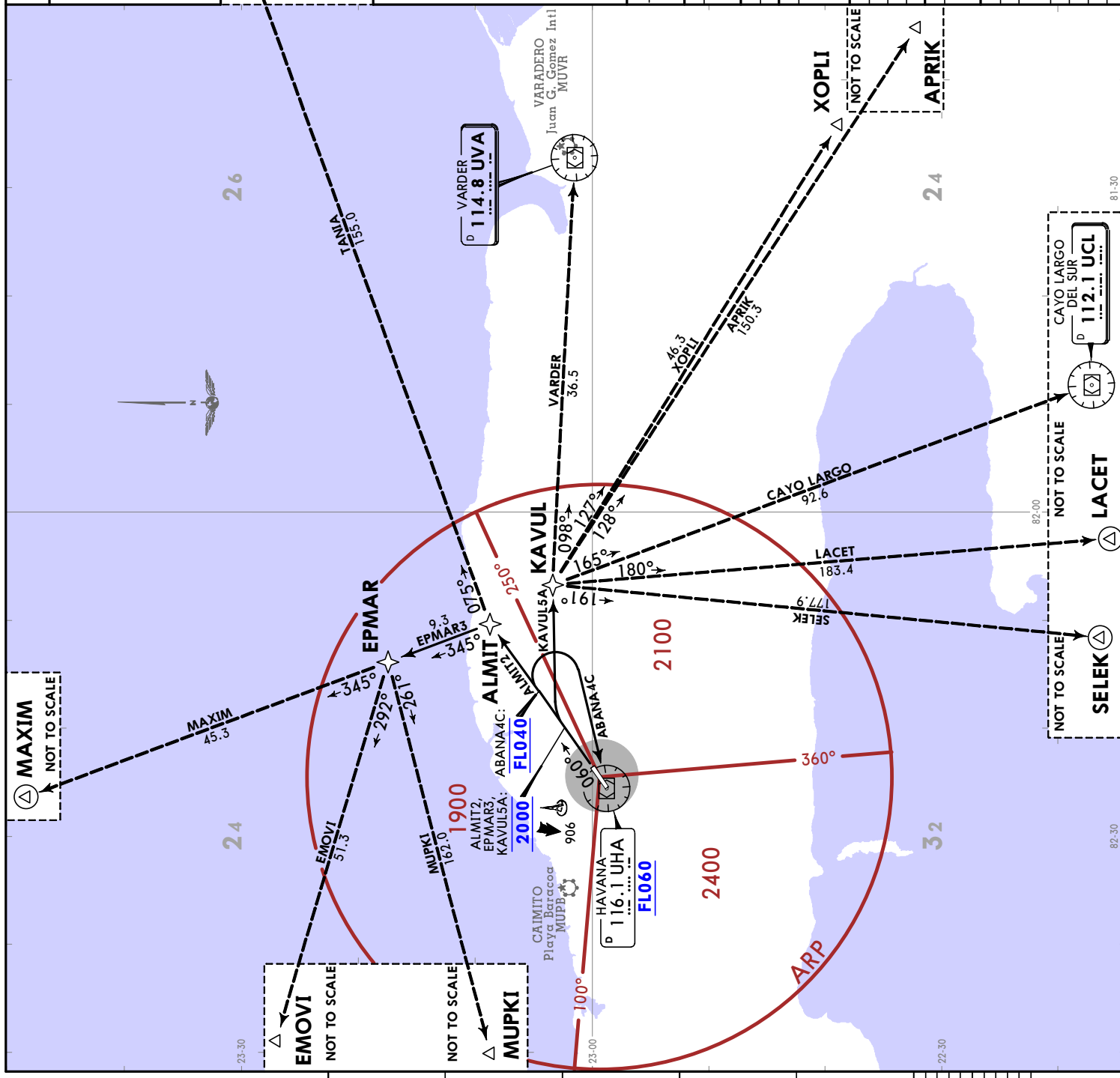
▲ **KAVUL5A TRANSITIONS**  
 APRIK From KAVUL proceed on 128° track to APRIK.  
 CAYO LARGO From KAVUL proceed on 165° track to UCL VOR.  
 LACET From KAVUL proceed on 180° track to LACET.  
 SELEK From KAVUL proceed on 191° track to SELEK.  
 VARDER From KAVUL proceed on 098° track to UVA VOR.  
 XOPLI From KAVUL proceed on 127° track to XOPLI.

▲ **ABANA4C**  
 Climb on 060° track to FL040, turn RIGHT direct to UHA VOR at or above FL060, and continue by assigned route as flight plan.

▲ **ALMIT2**  
 Climb on 060° track until 2000, proceed direct to ALMIT and continue by assigned transition.

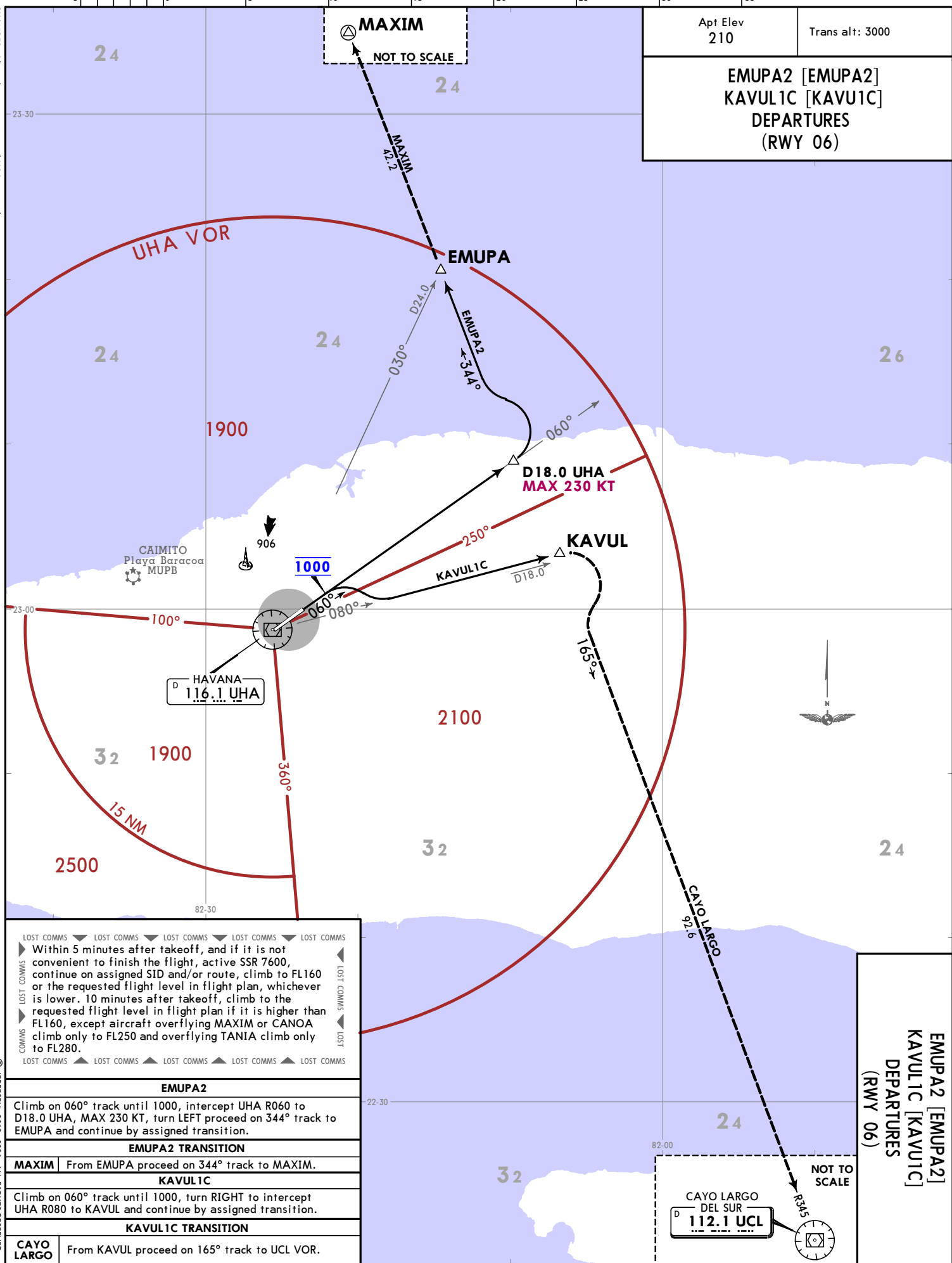
▲ **LOST COMMS**  
 Within 5 minutes after takeoff, and if it is convenient to continue the flight, active SSR 7600, or the requested flight level in flight plan, whichever is lower. 10 minutes after takeoff, climb to the requested flight level in flight plan if it is higher than FL160, except aircraft overflying MAXIM or CANOA climb only to FL250 and overflying TANIA climb only to FL280.

▲ **LOST COMMS**  
 LOST COMMS



CHANGES: Altitude restriction and MSA revised.

MUHA/HAV  
JOSE MARTI INTL



Apt Elev 210	Trans alt: 3000
<b>EMUPA2 [EMUPA2]</b> <b>KAVUL1C [KAVUL1C]</b> <b>DEPARTURES</b> <b>(RWY 06)</b>	

LOST COMMS ▼ LOST COMMS ▼ LOST COMMS ▼ LOST COMMS ▼ LOST COMMS

▶ Within 5 minutes after takeoff, and if it is not convenient to finish the flight, active SSR 7600, continue on assigned SID and/or route, climb to FL160 or the requested flight level in flight plan, whichever is lower. 10 minutes after takeoff, climb to the requested flight level in flight plan if it is higher than FL160, except aircraft overflying MAXIM or CANOA climb only to FL250 and overflying TANIA climb only to FL280.

LOST COMMS ▲ LOST COMMS ▲ LOST COMMS ▲ LOST COMMS ▲ LOST COMMS

<b>EMUPA2</b>	
Climb on 060° track until 1000, intercept UHA R060 to D18.0 UHA, MAX 230 KT, turn LEFT proceed on 344° track to EMUPA and continue by assigned transition.	
<b>EMUPA2 TRANSITION</b>	
<b>MAXIM</b>	From EMUPA proceed on 344° track to MAXIM.
<b>KAVUL1C</b>	
Climb on 060° track until 1000, turn RIGHT to intercept UHA R080 to KAVUL and continue by assigned transition.	
<b>KAVUL1C TRANSITION</b>	
<b>CAYO LARGO</b>	From KAVUL proceed on 165° track to UCL VOR.

<b>EMUPA2 [EMUPA2]</b> <b>KAVUL1C [KAVUL1C]</b> <b>DEPARTURES</b> <b>(RWY 06)</b>	
--	--

JEPPESSEN HAVANA, CUBA  
24 DEC 21 (10-3B) EFF 30 Dec  
SID

# MUHA/HAV

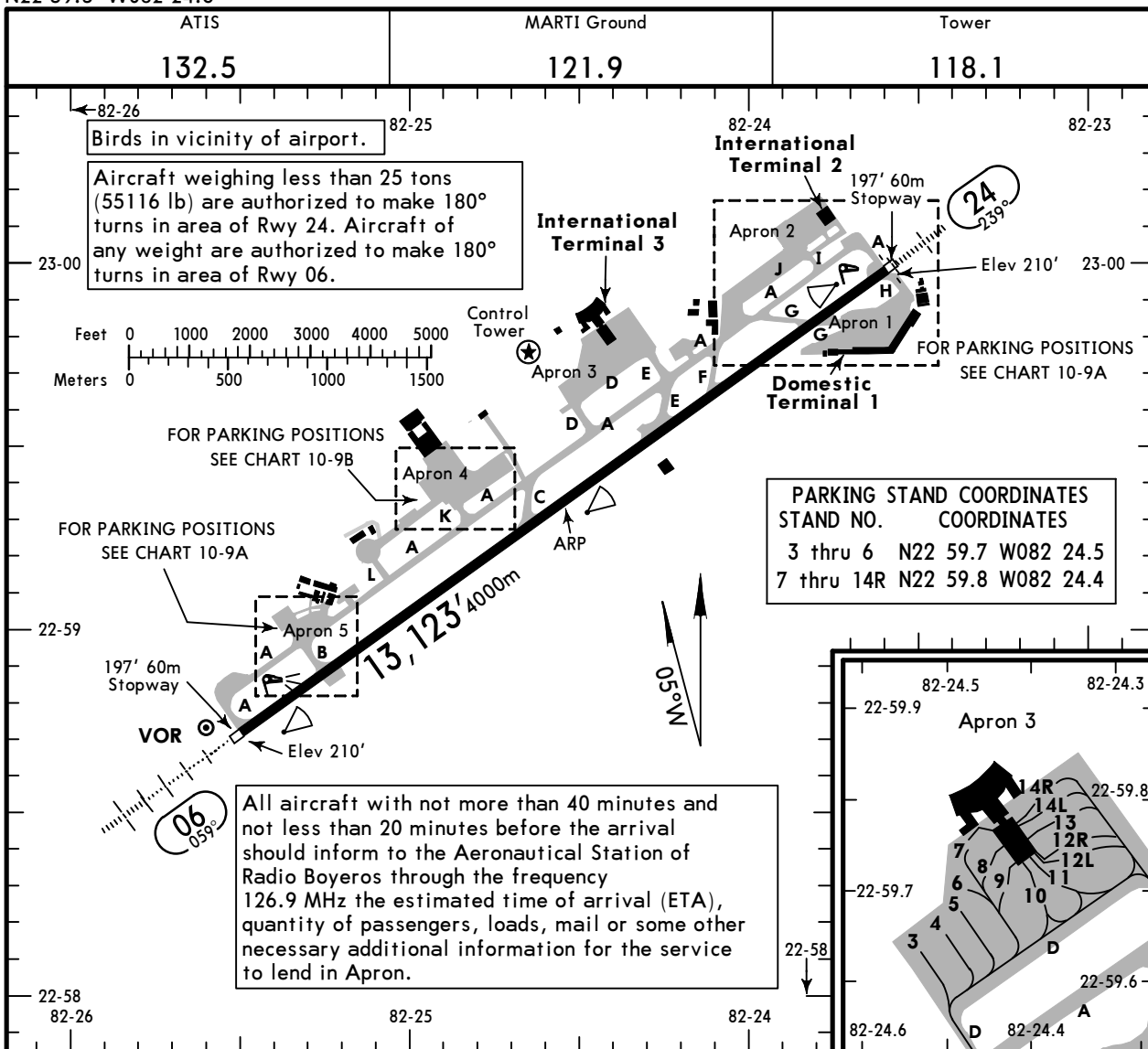
Apt Elev **210'**  
N22 59.3 W082 24.6



28 APR 23 **(10-9)**

# HAVANA, CUBA

JOSE MARTI INTL



### ADDITIONAL RUNWAY INFORMATION

RWY	LANDING BEYOND	USABLE LENGTHS		TAKE-OFF	WIDTH
		Threshold	Glide Slope		
06	HIRL HIALS PAPI -L (angle 3.0°) RVR		12,188' 3715m		148'
24	HIRL SALS PAPI-L (angle 3.0°) RVR				45m

### State TAKE-OFF & DEPARTURE PROCEDURE

1 & 2 Eng	<b>V0.8 km</b>
3 & 4 Eng	

**DEPARTURE PROCEDURE:** CAT C and D: Left turn immediately after takeoff prohibited Rwy 06.  
Aircraft motor tests prohibited in aircraft stands designated for service to aircraft and its passengers.  
Start-up prohibited before and during the process of pushing and/or pulling of parked aircraft that require this service for their departure. Exceptions are those aircraft that have inoperative APU (Air Power Unit) and need to use the ASU (Pneumatic Start Unit) to start engine.

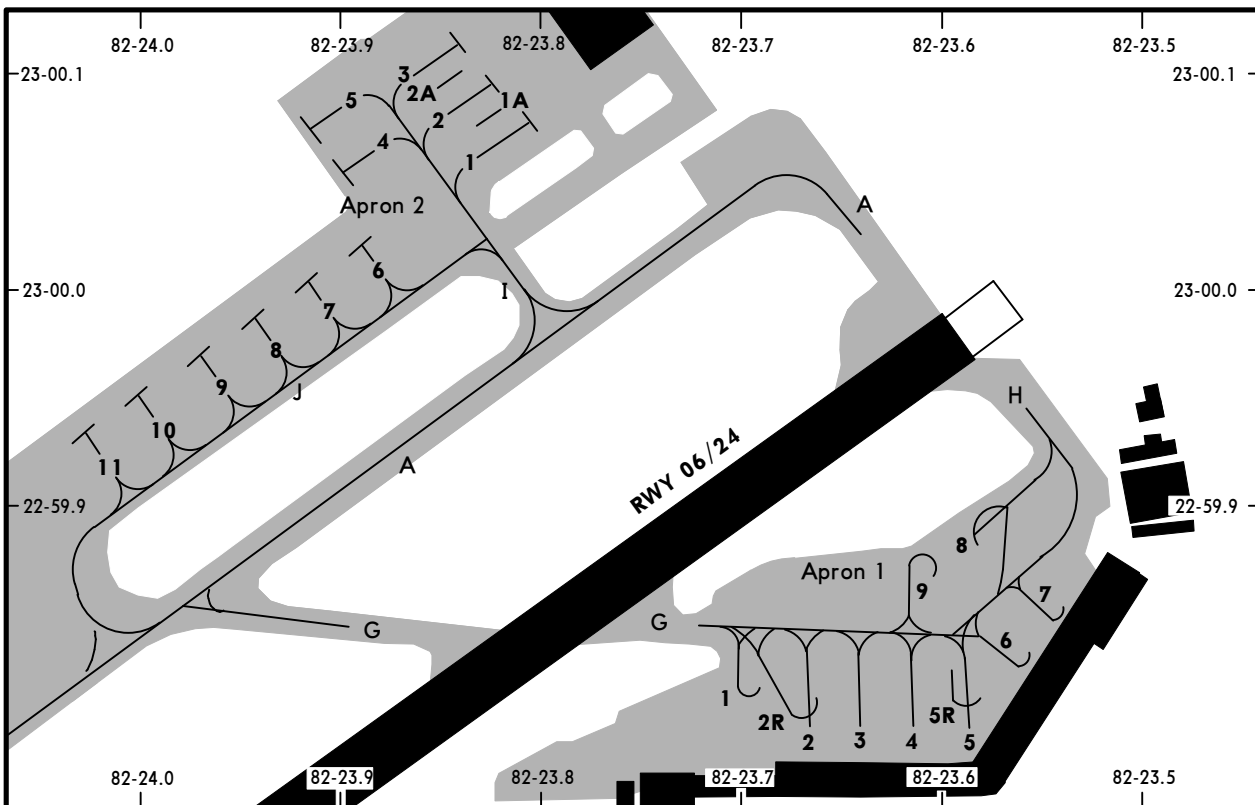
MUHA/HAV



HAVANA, CUBA

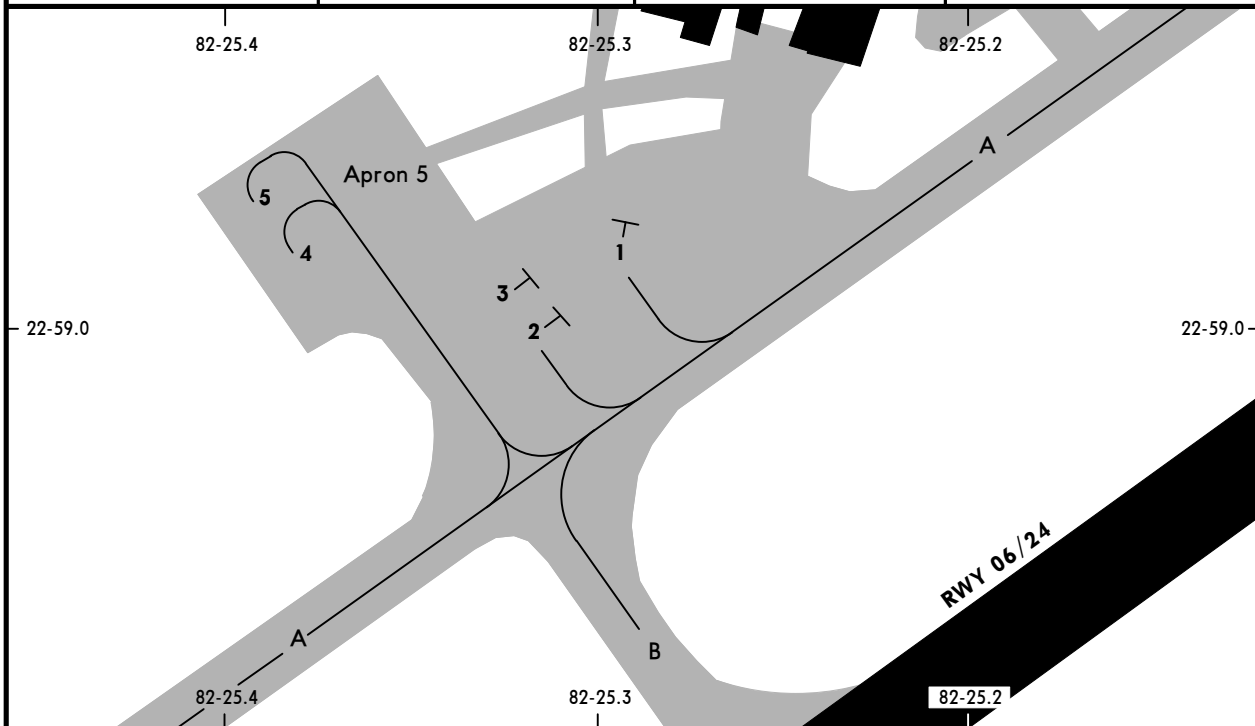
28 APR 23 (10-9A)

JOSE MARTI INTL



**PARKING STAND COORDINATES**

STAND No.	COORDINATES	STAND No.	COORDINATES
<b>Apron 1</b>		<b>Apron 2</b>	
1, 2, 2R	N22 59.8 W082 23.7	1 thru 3	N23 00.1 W082 23.8
3 thru 5R	N22 59.8 W082 23.6	4, 5	N23 00.1 W082 23.9
6, 7	N22 59.8 W082 23.5	6, 7	N23 00.0 W082 23.9
8, 9	N22 59.9 W082 23.6	8 thru 10	N23 00.0 W082 24.0
		11	N22 59.9 W082 24.0



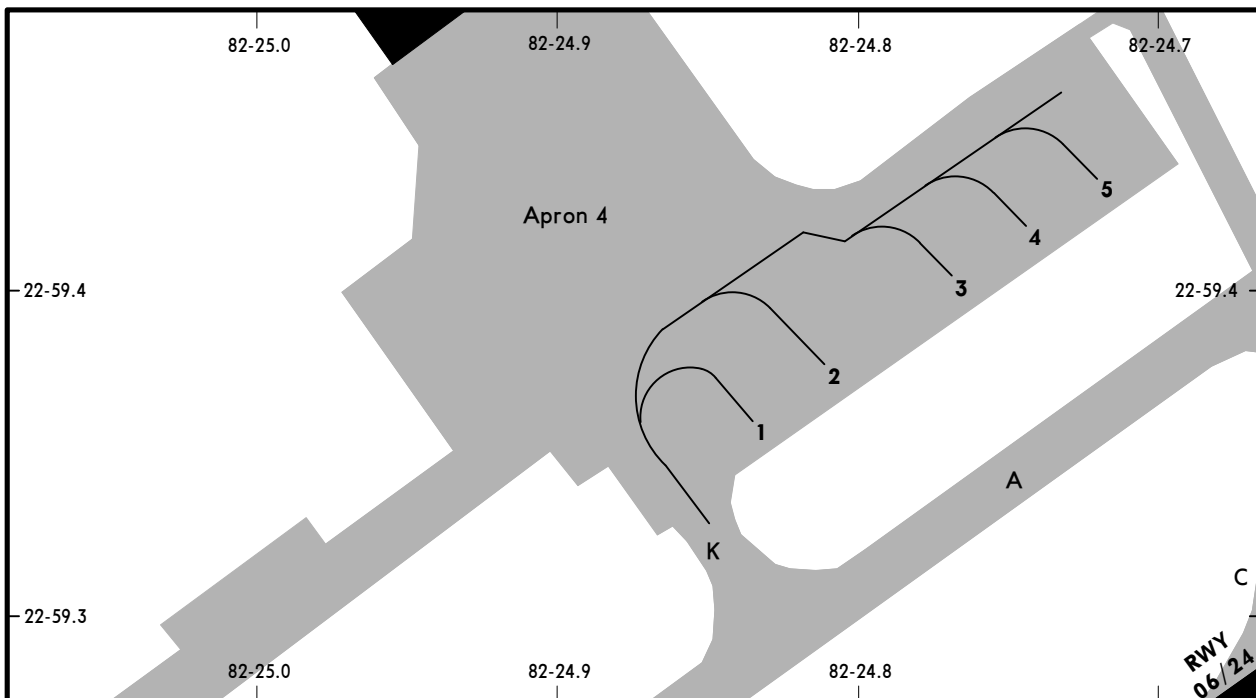
**PARKING STAND COORDINATES**

STAND No.	COORDINATES
<b>Apron 5</b>	
1 thru 3	N22 59.0 W082 25.3
4, 5	N22 59.0 W082 25.4

MUHA/HAV

**JEPPESEN**  
23 MAY 14 (10-9B)

**HAVANA, CUBA**  
JOSE MARTI INTL



**PARKING STAND COORDINATES**

STAND No.	COORDINATES
1 thru 3 4, 5	Apron 4
	N22 59.4 W082 24.8 N22 59.4 W082 24.7

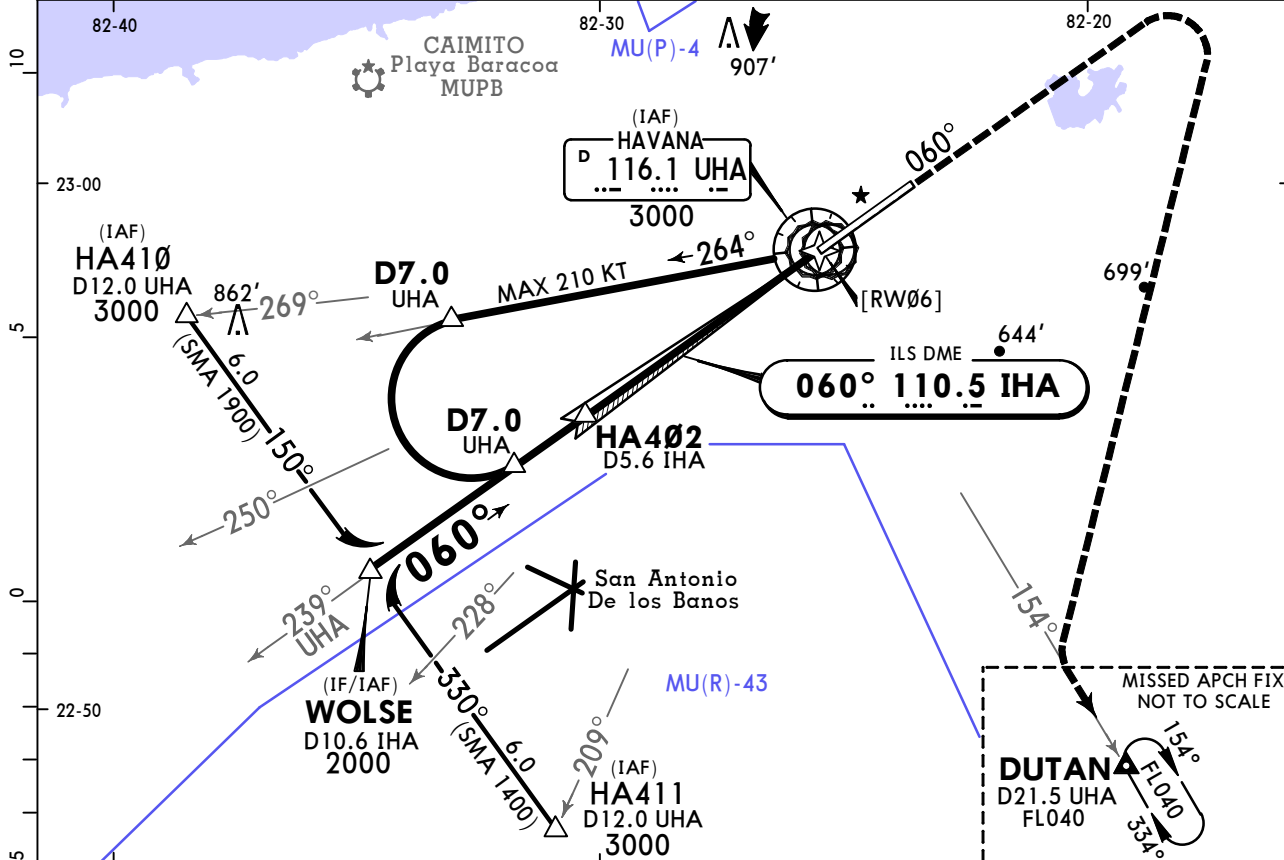
**MUHA/HAV**  
JOSE MARTI INTL

**JEPPESSEN**  
29 APR 22 **(11-1)**

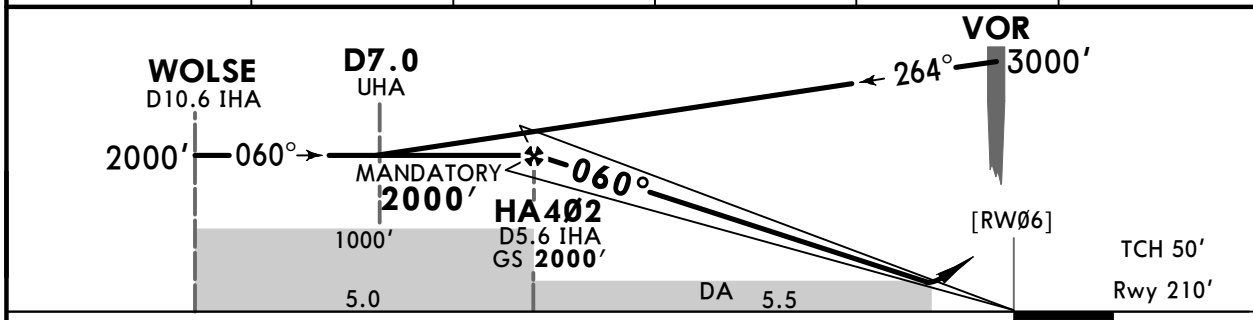
**HAVANA, CUBA**  
ILS Rwy 06

ATIS <b>132.5</b>		HAVANA Approach (R) <b>120.3</b>		MARTI Tower <b>118.1</b>		Ground <b>121.9</b>	
LOC IHA <b>110.5</b>	Final Apch Crs <b>060°</b>	HA402 MANDATORY <b>2000'</b> (1790')		ILS DA(H) <b>420'</b> (210')	Apt Elev 210' Rwy 210'		<p>MSA UHA VOR ① 1900 within 15 NM</p>
<p><b>MISSED APCH:</b> Climb on track 060° until 2000', turn RIGHT and intercept outbound UHA VOR R-154 and continue to DUTAN holding pattern to FL040 and expect ATC instructions.</p>							
Alt Set: hPa		Rwy Elev: 8 hPa		Trans level: By ATC		Trans alt: 3000'	

1. DME required. 2. CAUTION: The foreign crews landing on Rwy 06 will keep in mind the vicinity and alignment of the military aerodrome Rwy 05 San Antonio de los Banos, and should apply the authorized IFR procedure for Rwy 06 of La Havana/Jose Marti even in VMC. 3. The maximum indicated airspeed allowed within 25 NM from UHA VOR and at FL 100 or below, is 250 KT, unless ATC clears otherwise.



IHA DME	5.0	4.0	3.0	2.0	1.0
ALTITUDE	1820'	1500'	1180'	860'	550'



Gnd speed-Kts	70	90	100	120	140	160		UHA <b>116.1</b> R-154	
GS	3.00°	372	478	531	637	743			849
FAP to THR	5.5	4:43	3:40	3:18	2:45	2:21			2:04

<b>PANS OPS</b>	<b>State</b>		STRAIGHT-IN LANDING		CIRCLE-TO-LAND		
			ILS				
			DA(H) <b>420'</b> (210')				
			FULL	ALS out	Max Kts	MDA(H)	
A					100	1000'(790') V4.3 km	
B	V0.8 km			V1.2 km	135	1100'(890') V4.9 km	
C					180	1300'(1090') V6.1 km	
D					205		

# MUHA/HAV

## JOSE MARTI INTL

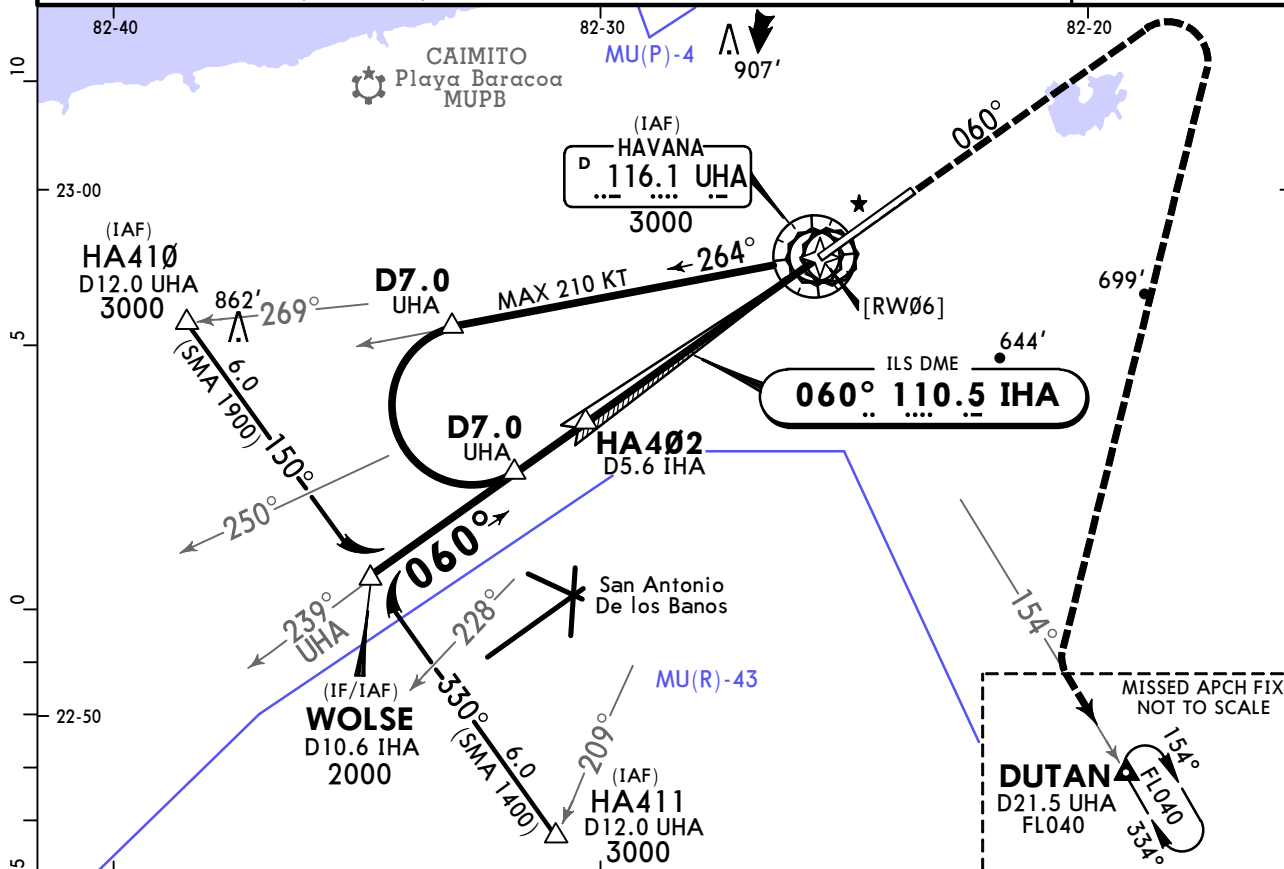
**JEPPESSEN**  
29 APR 22 **(11-2)**

# HAVANA, CUBA

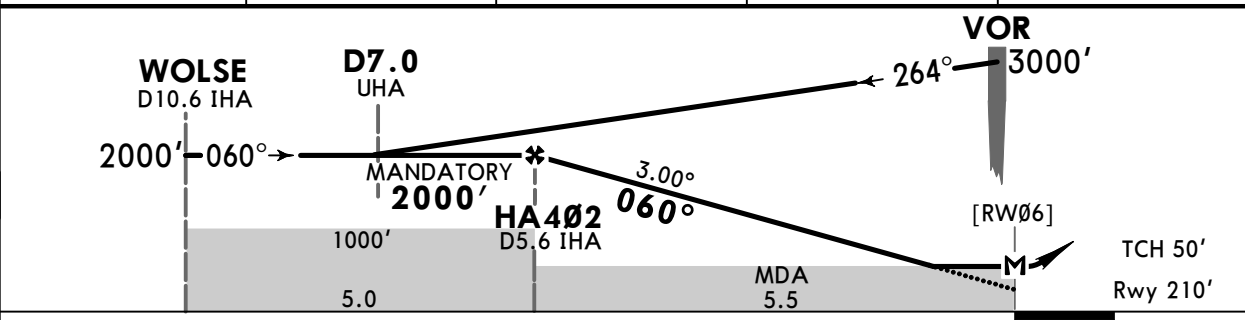
## LOC Rwy 06

ATIS <b>132.5</b>		HAVANA Approach (R) <b>120.3</b>		MARTI Tower <b>118.1</b>		Ground <b>121.9</b>		
LOC IHA <b>110.5</b>	Final Apch Crs <b>060°</b>	HA402 MANDATORY <b>2000'</b> (1790')		MDA(H) <b>580'</b> (370')	Apt Elev 210' Rwy 210'		<p>MSA UHA VOR ① 1900 within 15 NM</p>	
<b>MISSED APCH:</b> Climb on track 060° until 2000', turn RIGHT and intercept outbound UHA VOR R-154 and continue to DUTAN holding pattern to FL040 and expect ATC instructions.								
Alt Set: hPa		Rwy Elev: 8 hPa		Trans level: By ATC		Trans alt: 3000'		

1. DME required. 2. CAUTION: The foreign crews landing on Rwy 06 will keep in mind the vicinity and alignment of the military aerodrome Rwy 05 San Antonio de los Banos, and should apply the authorized IFR procedure for Rwy 06 of La Havana/Jose Marti even in VMC. 3. The maximum indicated airspeed allowed within 25 NM from UHA VOR and at FL 100 or below, is 250 KT, unless ATC clears otherwise.



IHA DME	5.0	4.0	3.0	2.0
ALTITUDE	1820'	1500'	1180'	860'



Gnd speed-Kts	70	90	100	120	140	160		UHA <b>116.1</b> R-154
Descent Angle	3.00°	372	478	531	637	743		
MAP at RW06 or FAF to MAP	5.5	4:43	3:40	3:18	2:45	2:21		

PANS OPS	<b>State</b>		STRAIGHT-IN LANDING		CIRCLE-TO-LAND		
			MDA(H) <b>580'</b> (370')		Max Kts		
			ALS out		MDA(H)		
	A	V1.3 km		V1.7 km		100	1000' (790') V4.3 km
	B	V1.3 km		V1.7 km		135	1100' (890') V4.9 km
C	V1.3 km		V1.7 km		180	1300' (1090') V6.1 km	
D	V1.3 km		V1.7 km		205	1300' (1090') V6.1 km	



**MUHA/HAV**  
JOSE MARTI INTL

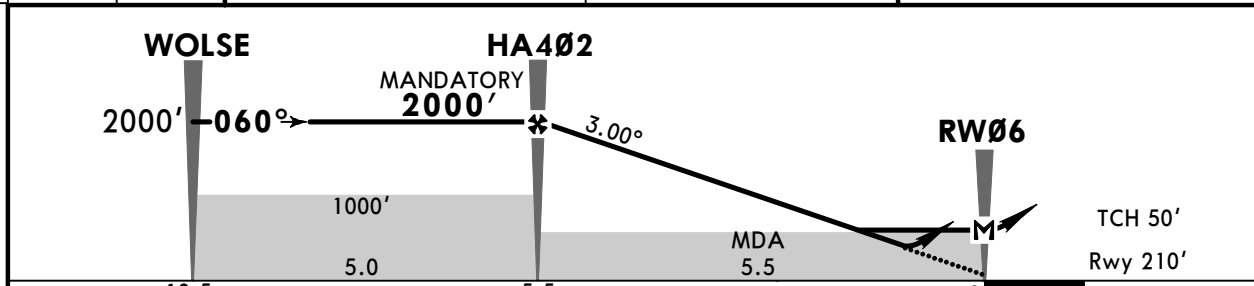
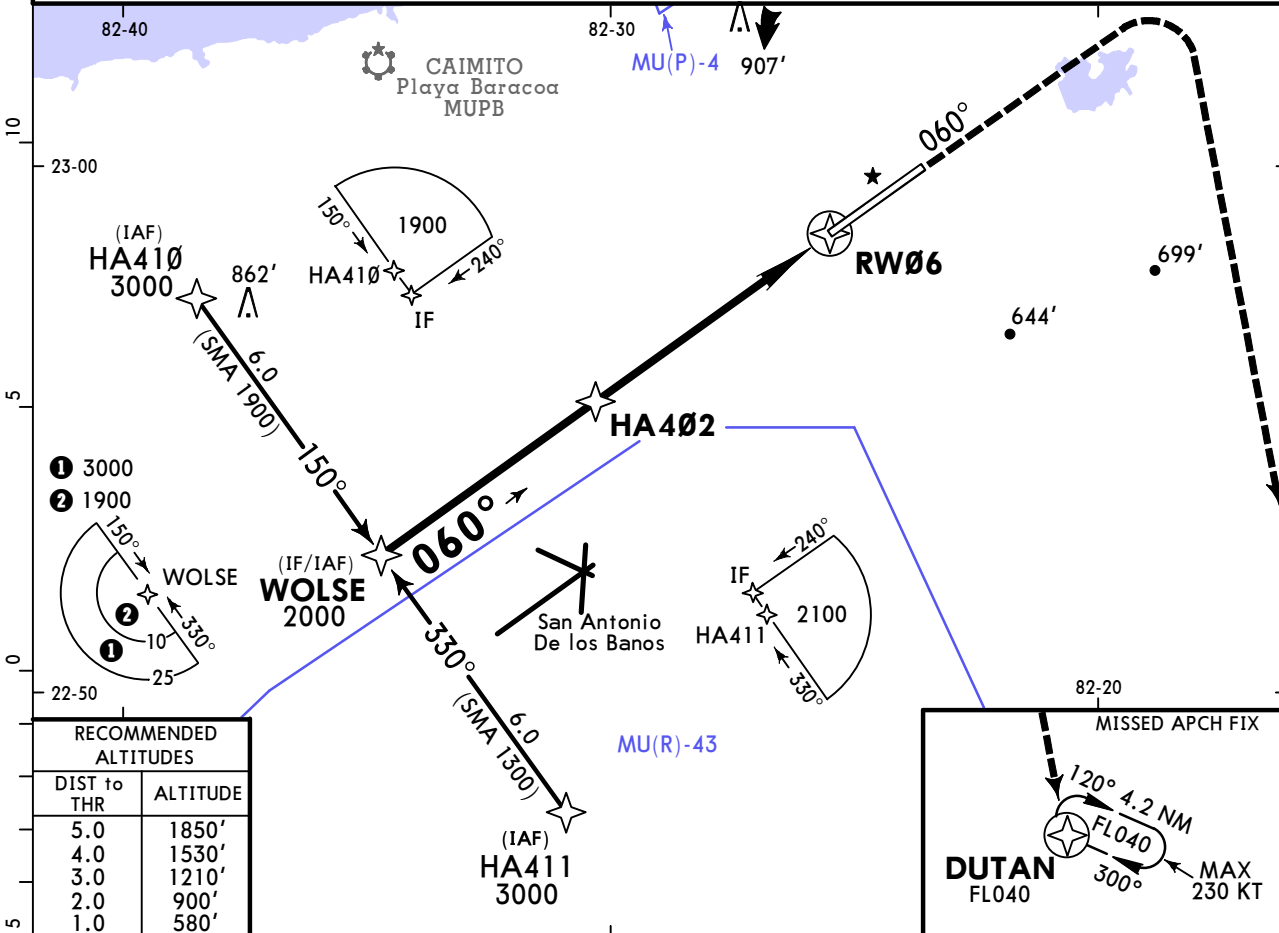
**JEPPESSEN**  
29 APR 22 (12-1)

**HAVANA, CUBA**  
RNP Rwy 06

ATIS 132.5		HAVANA Approach (R) 120.3		MARTI Tower 118.1		Ground 121.9	
RNAV	Final Apch Crs <b>060°</b>	<b>HA402</b> MANDATORY 2000' (1790')		LNAV/VNAV DA(H) 460' (250')		Apt Elev 210'	TAA 25 NM IF/IAF
<b>MISSED APCH: Climb on track 060° until 2000', turn RIGHT direct to DUTAN holding pattern at FL040 and expect ATC instructions.</b>						Rwy 210'	

RNP Apch | Alt Set: hPa | Rwy Elev: 8 hPa | Trans level: By ATC | Trans alt: 3000'

1. For loss of RNAV capability: Climb on track 060° until 3000', and request ATC instructions.  
 2. CAUTION: The foreign crews landing on Rwy 06 will keep in mind the vicinity and alignment of the military aerodrome Rwy 05 San Antonio de los Banos, and should apply the authorized IFR procedure for the Rwy 06 of La Havana/Jose Marti, even in VMC. 3. The maximum indicated airspeed allowed within 25 NM from UHA VOR and at FL 100 or below, is 250 KT, unless ATC clears otherwise.



Gnd speed-Kts	70	90	100	120	140	160
Descent Angle	3.00°	372	478	531	637	743
MAP at RW06						
HA402 to MAP	5.5	4:43	3:40	3:18	2:45	2:21

PANS OPS	STRAIGHT-IN LANDING				CIRCLE-TO-LAND	
	LNAV/VNAV		LNAV		Max Kts	MDA(H)
	DA(H) 460' (250')		MDA(H) 580' (370')			
	ALS out		ALS out			
A					100	
B	V0.8 km	V1.3 km	V1.3 km	V1.7 km	135	1000' (790') V4.3 km
C					180	1100' (890') V4.9 km
D					205	1300' (1090') V6.1 km

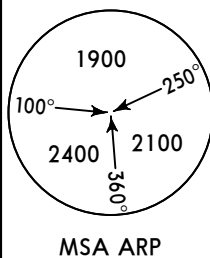
CHANGES: New AOM concept.

**MUHA/HAV**  
JOSE MARTI INTL

**JEPPESEN**  
29 APR 22 (12-2)

**HAVANA, CUBA**  
RNP Rwy 24

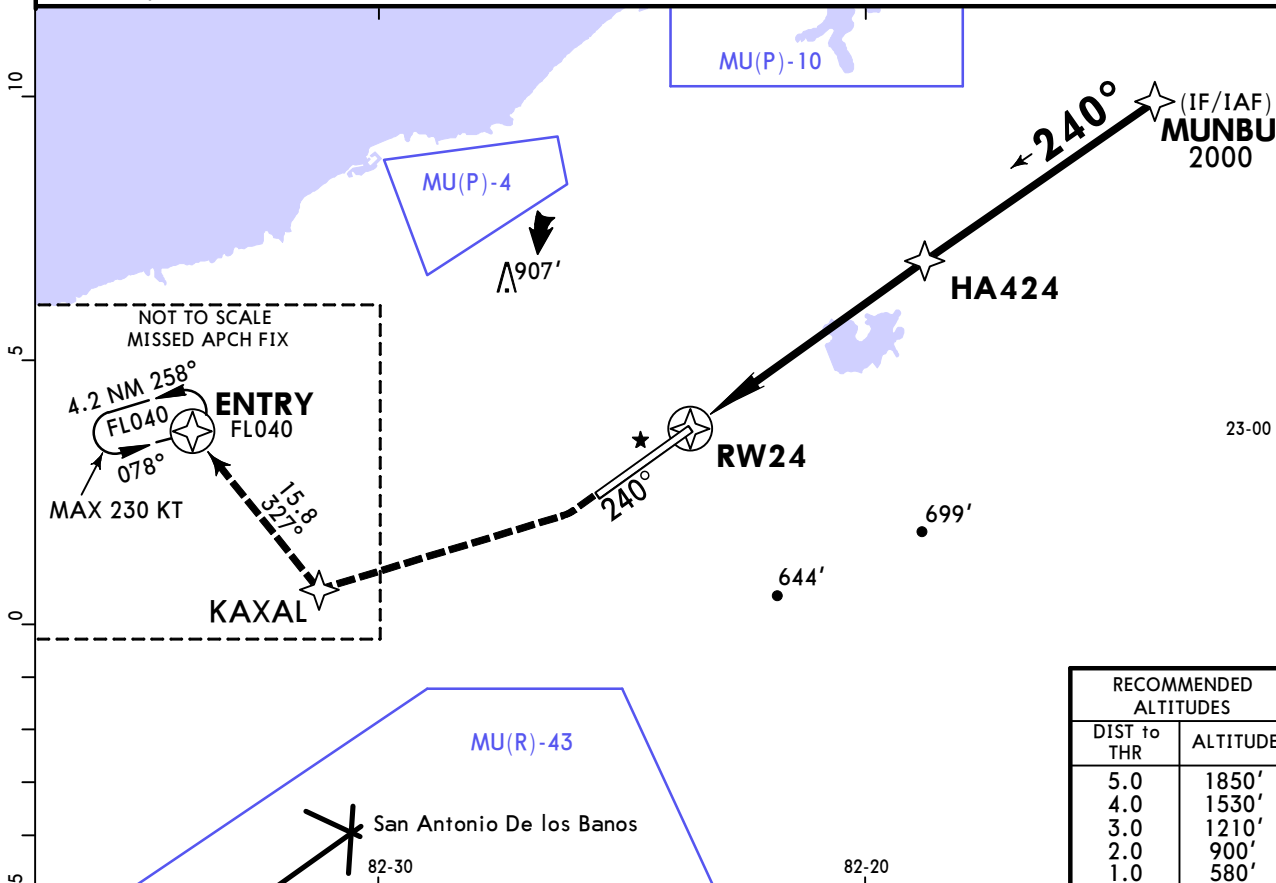
ATIS 132.5	HAVANA Approach (R) 120.3	MARTI Tower 118.1	Ground 121.9
RNAV	Final Apch Crs 240°	HA424 MANDATORY 2000' (1790')	LNAV/VNAV DA(H) 480' (270')
		Apt Elev 210'	Rwy 210'



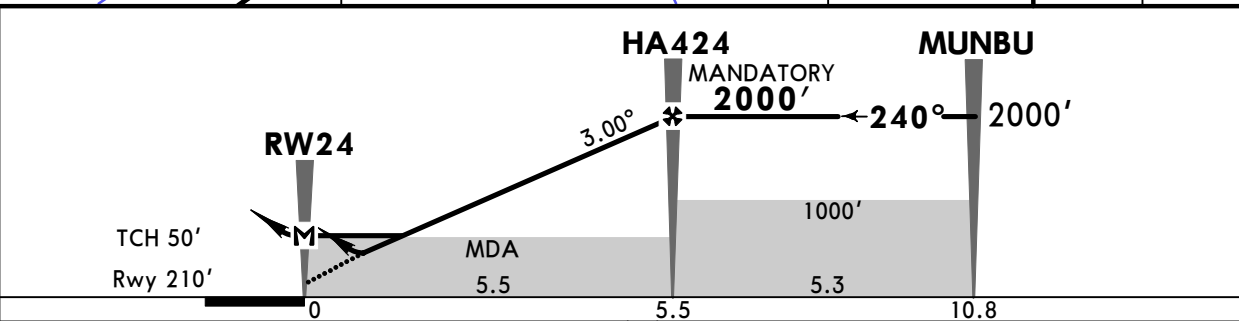
**MISSED APCH:** Climb on track 240° until 1000', turn RIGHT to KAXAL, continue on track 327° to ENTRY holding pattern at FL040 and expect ATC instructions.

RNP Apch | Alt Set: hPa | Rwy Elev: 8 hPa | Trans level: By ATC | Trans alt: 3000'

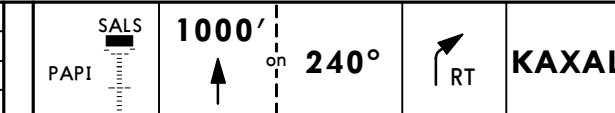
1. For loss of RNAV capability: Climb on track 240° until 3000', and request ATC instructions.
2. The maximum indicated airspeed allowed within 25 NM from UHA VOR and at FL 100 or below, is 250 KT, unless ATC clears otherwise.



RECOMMENDED ALTITUDES	
DIST to THR	ALTITUDE
5.0	1850'
4.0	1530'
3.0	1210'
2.0	900'
1.0	580'



Gnd speed-Kts	70	90	100	120	140	160
Descent Angle 3.00°	372	478	531	637	743	849
MAP at RW24						
HA424 to MAP	5.5	4:43	3:40	3:18	2:45	2:21



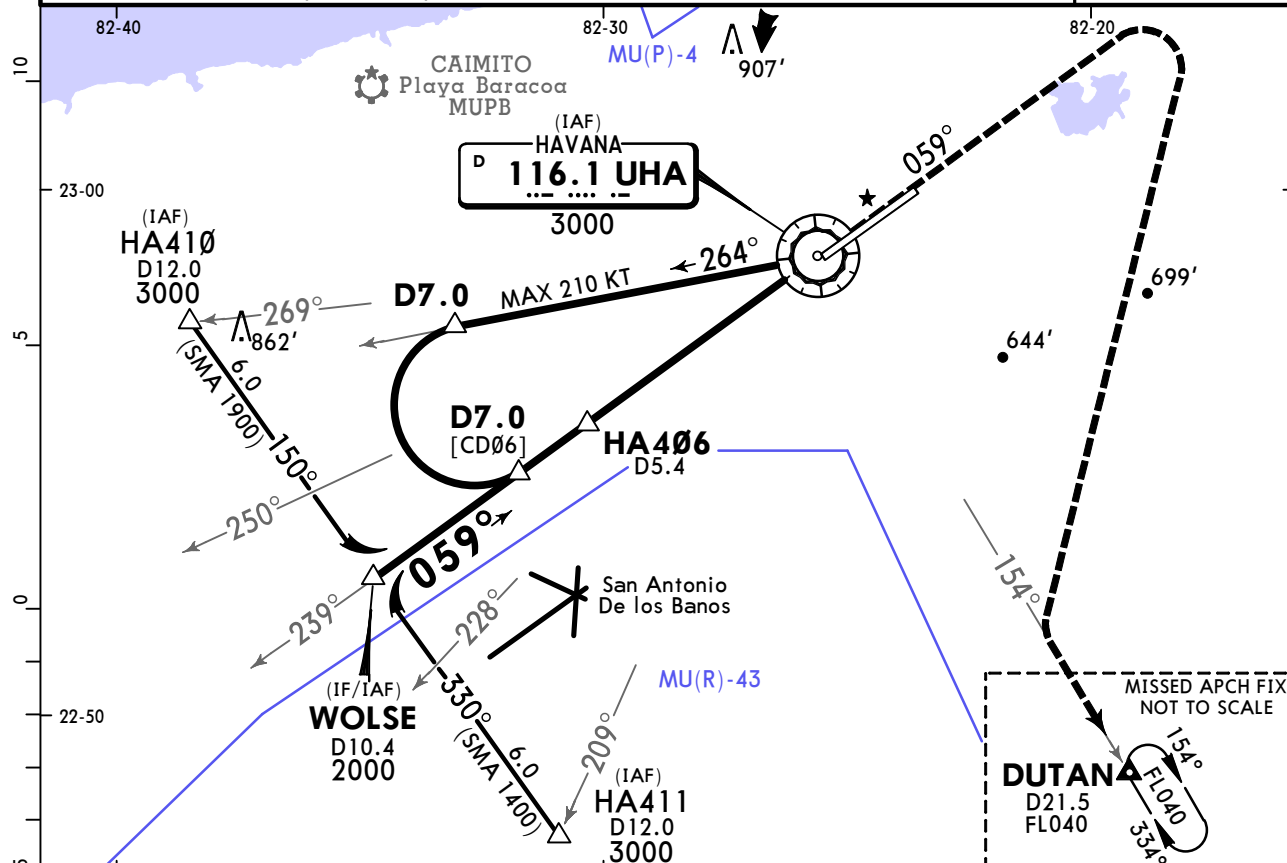
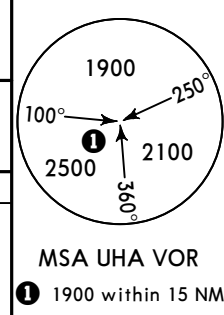
PANS OPS	STRAIGHT-IN LANDING				CIRCLE-TO-LAND	
	LNAV/VNAV		LNAV		Max Kts	MDA(H)
	DA(H) 480' (270')		MDA(H) 640' (430')			
	ALS out		ALS out			
A					100	1000' (790') V4.3 km
B	V1.1 km	V1.3 km	V1.8 km	V2.0 km	135	1100' (890') V4.9 km
C					180	1300' (1090') V6.1 km
D					205	

# MUHA/HAV JOSE MARTI INTL

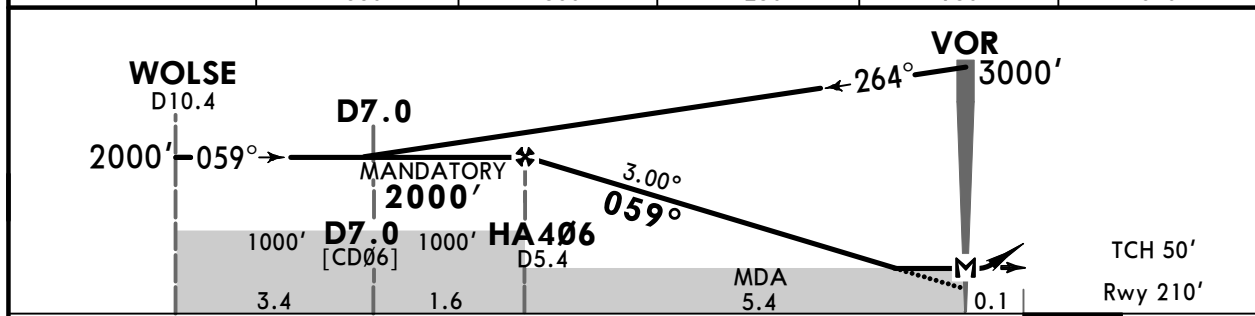
**JEPPESSEN**  
29 APR 22 **(13-1)**

# HAVANA, CUBA VOR Rwy 06

ATIS <b>132.5</b>		HAVANA Approach (R) <b>120.3</b>		MARTI Tower <b>118.1</b>		Ground <b>121.9</b>	
VOR UHA <b>116.1</b>	Final Apch Crs <b>059°</b>	HA406 MANDATORY <b>2000'</b> (1790')		MDA(H) <b>580'</b> (370')	Apt Elev 210' Rwy 210'		
<b>MISSED APCH:</b> Climb on track 059° until 2000', turn RIGHT and intercept outbound UHA VOR R-154 and continue to DUTAN holding pattern at FL040 and expect ATC instructions.							
Alt Set: hPa		Rwy Elev: 8 hPa		Trans level: By ATC		Trans alt: 3000'	
1. DME required. 2. CAUTION: The foreign crews landing on Rwy 06 will keep in mind the vicinity and alignment of the military aerodrome Rwy 05 San Antonio de los Banos, and should apply the authorized IFR procedure for Rwy 06 of La Havana/Jose Marti even in VMC. 3. The maximum indicated airspeed allowed within 25 NM from UHA VOR and at FL 100 or below, is 250 KT, unless ATC clears otherwise.							



UHA DME	5.0	4.0	3.0	2.0	1.0
ALTITUDE	1880'	1560'	1250'	930'	610'



Gnd speed-Kts	70	90	100	120	140	160	HIALS PAPI 2000' on 059° RT UHA R-154
Descent Angle	3.00°	372	478	531	637	743	
MAP at VOR or HA406 to MAP	5.4	4:38	3:36	3:14	2:42	2:19	

<b>PANS OPS</b>	<b>State</b>		STRAIGHT-IN LANDING		CIRCLE-TO-LAND	
	MDA(H) <b>580'</b> (370')				ALS out	
	A		V1.3 km		V1.7 km	
	B		V1.3 km		V1.7 km	
	C		V1.3 km		V1.7 km	
D		V1.3 km		V1.7 km		
		Max Kts	MDA(H)			
		100	1000'(790')		V4.3 km	
		135	1100'(890')		V4.9 km	
		180	1300'(1090')		V6.1 km	

# MUHA/HAV

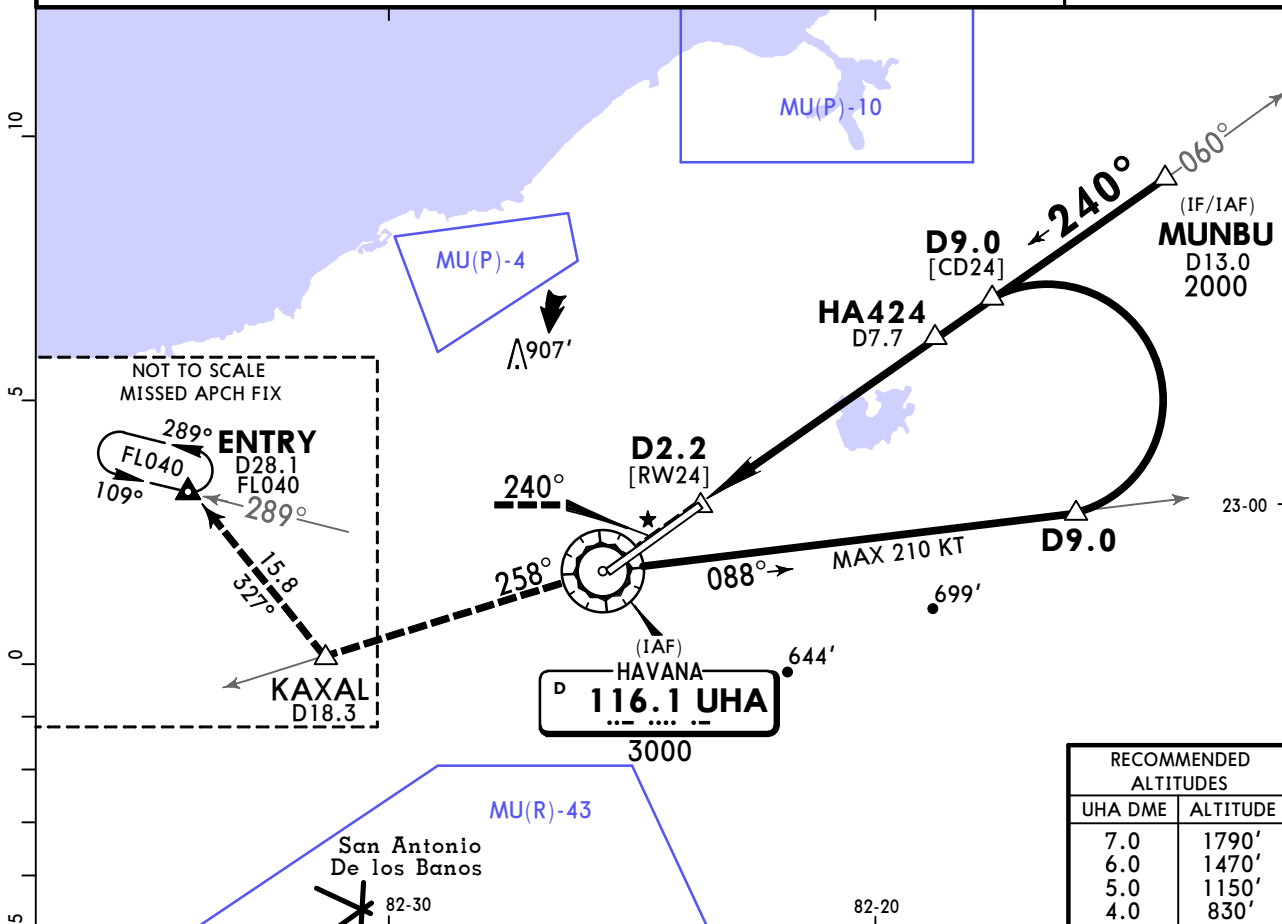
## JOSE MARTI INTL

**JEPPESSEN**  
29 APR 22 **(13-2)**

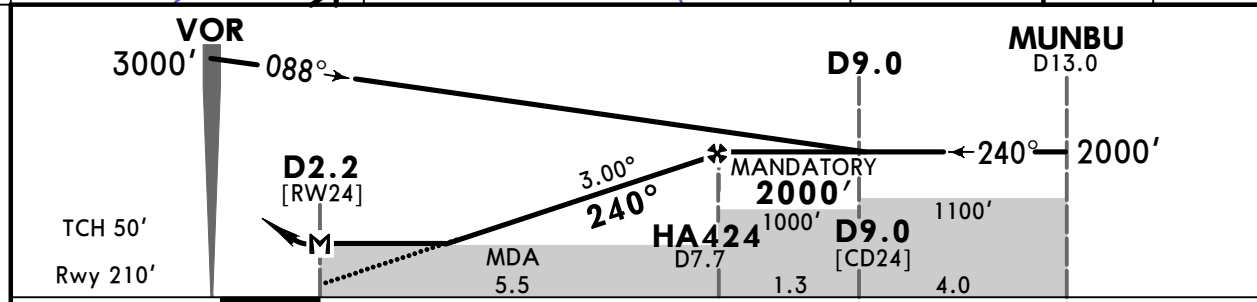
# HAVANA, CUBA

## VOR Rwy 24

ATIS <b>132.5</b>		HAVANA Approach (R) <b>120.3</b>		MARTI Tower <b>118.1</b>		Ground <b>121.9</b>	
VOR UHA <b>116.1</b>	Final Apch Crs <b>240°</b>	HA424 MANDATORY <b>2000'</b> (1790')		MDA(H) <b>640'</b> (430')	Apt Elev 210' Rwy 210'		
<b>MISSED APCH:</b> Climb on track 240° until 1000', intercept outbound UHA VOR R-258 to KAXAL, continue on track 327° to ENTRY holding pattern at FL040 and expect ATC instructions.							
Alt Set: hPa		Rwy Elev: 8 hPa		Trans level: By ATC		Trans alt: 3000'	
1. DME required. 2. The maximum indicated airspeed allowed within 25 NM from UHA VOR and at FL 100 or below, is 250 KT, unless ATC clears otherwise.							



RECOMMENDED ALTITUDES	
UHA DME	ALTITUDE
7.0	1790'
6.0	1470'
5.0	1150'
4.0	830'



Gnd speed-Kts	70	90	100	120	140	160	SALS PAPI 	UHA <b>116.1</b> R-258 KAXAL
Descent Angle 3.00°	372	478	531	637	743	849		
MAP at D2.2 or HA424 to MAP	5.5	4:43	3:40	3:18	2:45	2:21		

PANS OPS	STRAIGHT-IN LANDING		CIRCLE-TO-LAND	
	MDA(H) <b>640'</b> (430')		MDA(H)	
A	ALS out		100	1000' (790') V4.3 km
B			135	
C	V1.8 km	V2.0 km	180	1100' (890') V4.9 km
D			205	1300' (1090') V6.1 km

## Chart changes since cycle 10-2024

ADD = added chart, REV = revised chart, DEL = deleted chart.

ACT	PROCEDURE IDENT	INDEX	REV DATE	EFF DATE
-----	-----------------	-------	----------	----------

HAVANA, (JOSE MARTI INTL - MUHA)

## TERMINAL CHART CHANGE NOTICES

### Chart Change Notices for Airport MUHA

**Type:** Terminal

**Effectivity:** Temporary

**Begin Date:** Immediately

**End Date:** 20240718

RVR MET information (located in the centre field and 90m from Rwy CL) not available.