

List of pages in this Trip Kit

Trip Kit Index

Airport Information For SFAL

Terminal Charts For SFAL

Revision Letter For Cycle 07-2023

Change Notices

Notebook

General Information

Location: STANLEY FLK
ICAO: SFAL
Lat/Long: S51° 41.15', W057° 46.64'
Elevation: 74 ft

Airport Use: Public
Daylight Savings: Not Observed
UTC Conversion: +3:00 = UTC
Magnetic Variation: 3.0° E

Fuel Types: 100 Octane (LL), Jet A-1
Repair Types: Minor Airframe, Minor Engine
Customs: Yes
Airport Type: IFR
Landing Fee: No
Control Tower: No
Jet Start Unit: No
LLWS Alert: No
Beacon: No

Sunrise: 1037 Z
Sunset: 2105 Z

Runway Information

Runway: 09
Length x Width: 3629 ft x 59 ft
Surface Type: asphalt
TDZ-Elev: 69 ft
Lighting: Edge

Runway: 18
Length x Width: 1102 ft x 46 ft
Surface Type: asphalt
TDZ-Elev: 68 ft

Runway: 27
Length x Width: 3629 ft x 59 ft
Surface Type: asphalt
TDZ-Elev: 70 ft
Lighting: Edge
Displaced Threshold: 1007 ft

Runway: 36

Length x Width: 1102 ft x 46 ft

Surface Type: asphalt

TDZ-Elev: 69 ft

Communication Information

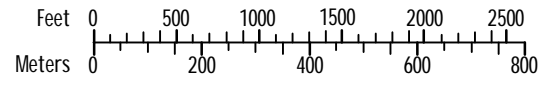
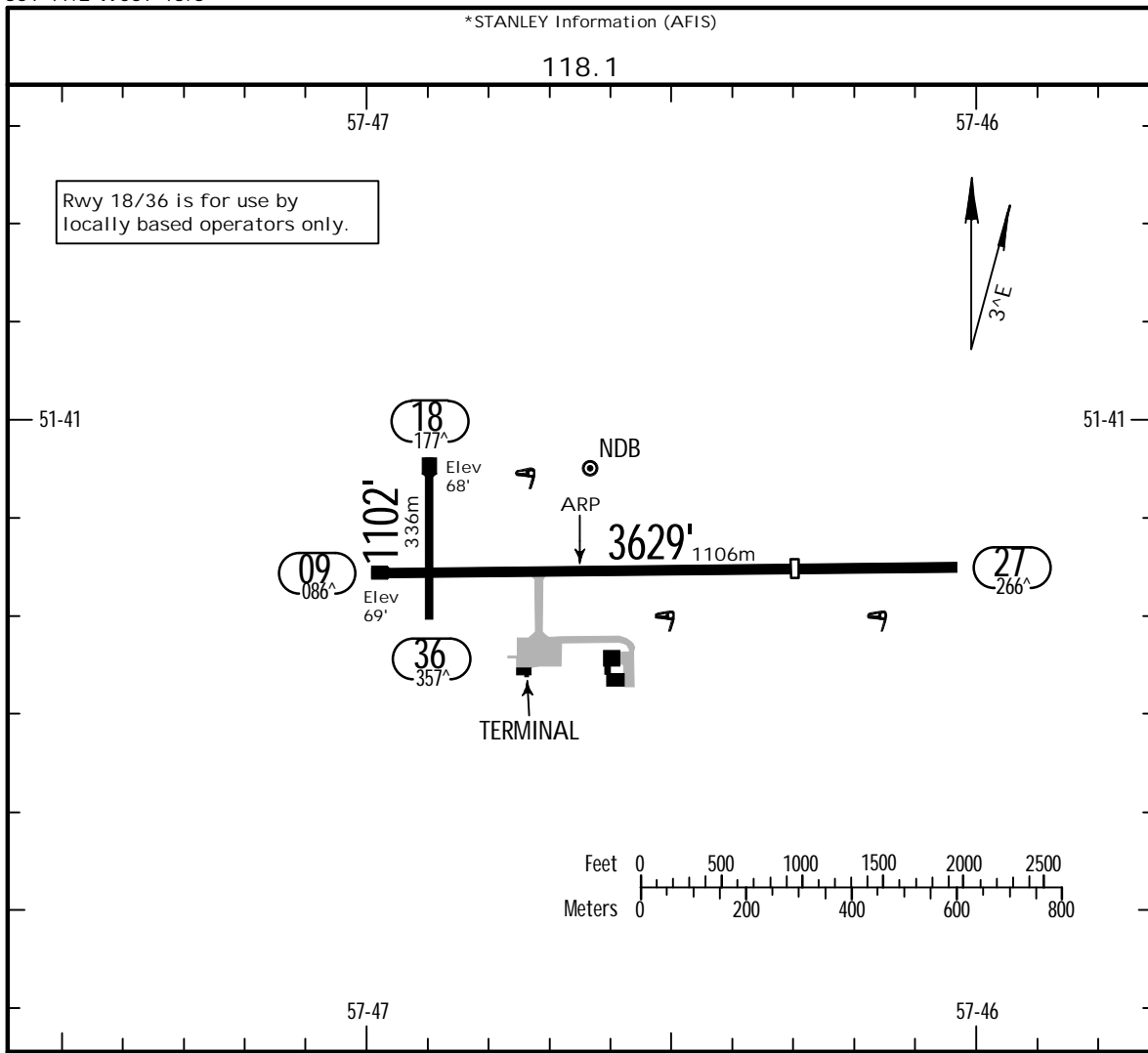
Stanley Information: 118.100

SFAL
Apt Elev 74'
S51 41.2 W057 46.6

JEPPESEN
15 NOV 19 (10-9)

STANLEY, FALKLAND IS
STANLEY

*STANLEY Information (AFIS)



RWY	USABLE LENGTHS	TAKE-OFF	WIDTH
09 27	RL(60m) APAPI-L (angle 3.00°) 2621' 799m		59' 18m
18 36			46' 14m

ADDITIONAL RUNWAY INFORMATION

	Standard.		
	TAKE-OFF		
	Low Visibility Take-off Day: RL & RCLM Night: RL	Day: RL or RCLM Night: RL	Adequate vis ref (Day only)
A	RVR 300m	400m	500m
B			
C			
D			

SFAL
STANLEY

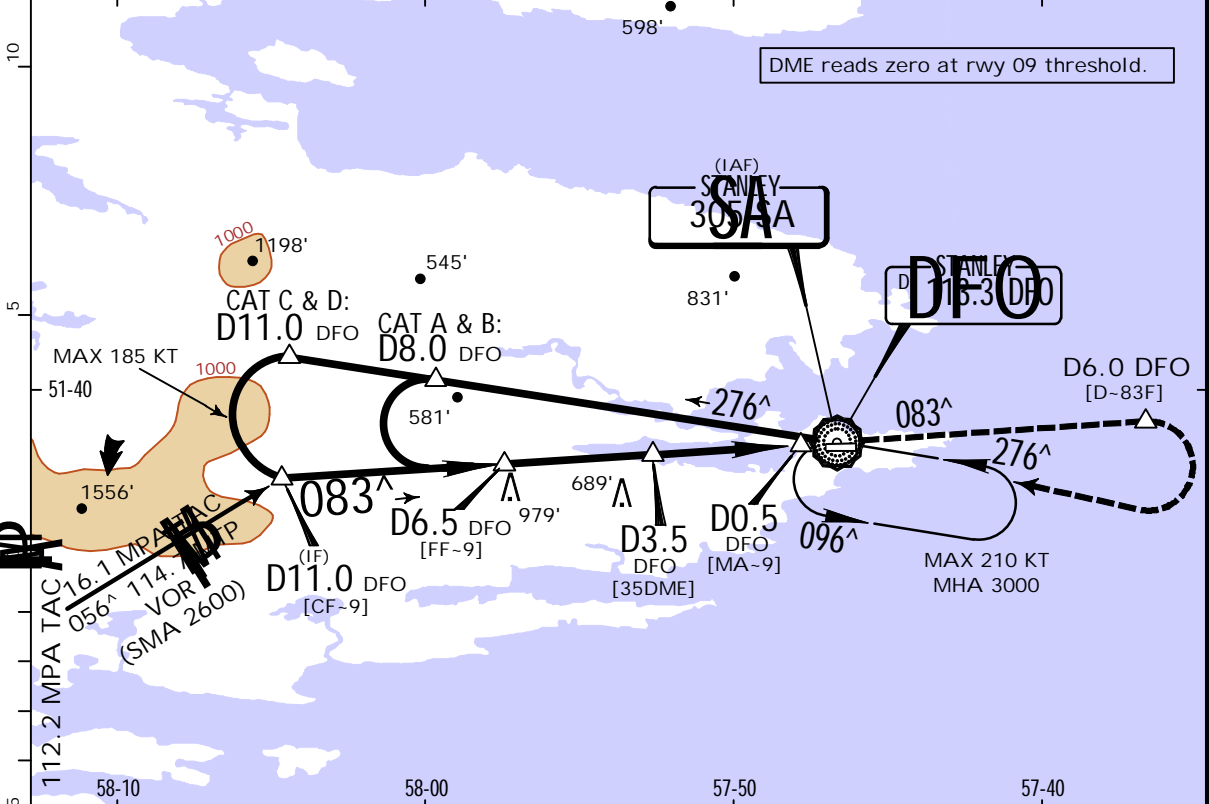
JEPPESEN
27 DEC 19 (16-1)

STANLEY, FALKLAND IS
NDB DME Rwy 09

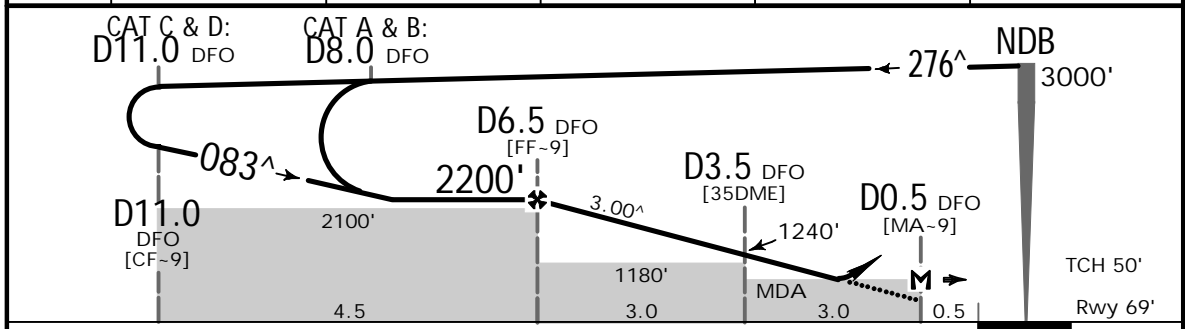
*STANLEY Information (AFIS)

BRIEFING STRIP™

118.1					
NDB SA 305	Final Apch Crs 083 [^]	D6.5 DFO 2200' (2131')	DA/MDA(H) 520' (451')	Apt Elev 74'	Rwy 69'
MISSED APCH: Climb STRAIGHT AHEAD. At D6.0 DFO turn RIGHT to NDB and hold. Climb to 3000'.					
Alt Set: hPa	Rwy Elev: 3 hPa	Trans level: By ATC	Trans alt: 5000'	MSA SA NDB	



DFO DME	6.0	5.0	4.0	3.0	2.0
ALTITUDE	2030'	1710'	1390'	1075'	755'



Gnd speed-Kts	70	90	100	120	140	160	APAPI-L	D6.0 DFO ↑	
Descent Angle	3.00 [^]	372	478	531	637	849			
MAP at D0.5 DFO									

PANS OPS	Standard. STRAIGHT-IN LANDING RWY 09				CIRCLE-TO-LAND Prohibited South of Rwy 09/27 if firearm range active			
	CDFA DA/MDA(H) 520' (451')				Max Kts			
	A	RVR 1500m			100	520' (446')	1900m	
	B	RVR 1500m			135	580' (506')	2800m	
	C	RVR 2100m			180	1320' (1246')	3700m	
D	RVR 2100m			205	1320' (1246')	4600m		

SFAL
STANLEY

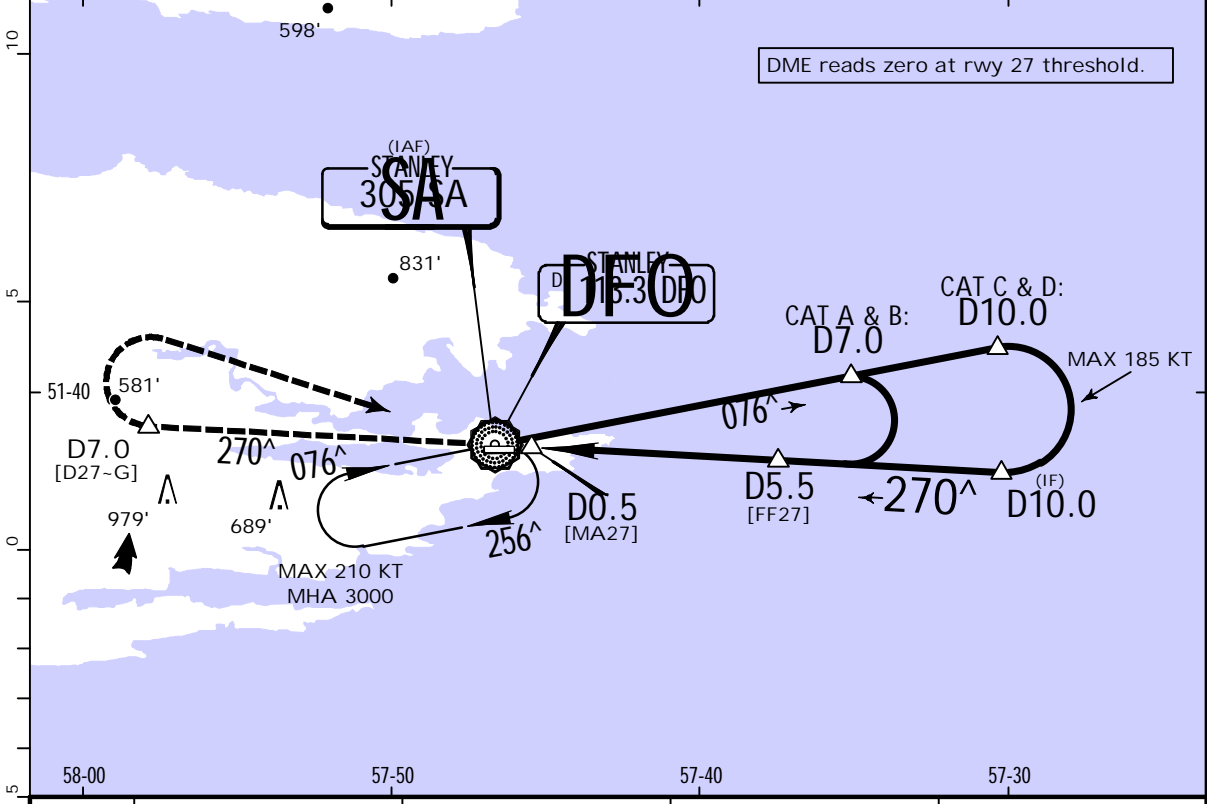
JEPPESEN
27 DEC 19 (16-2)

STANLEY, FALKLAND IS
NDB DME Rwy 27

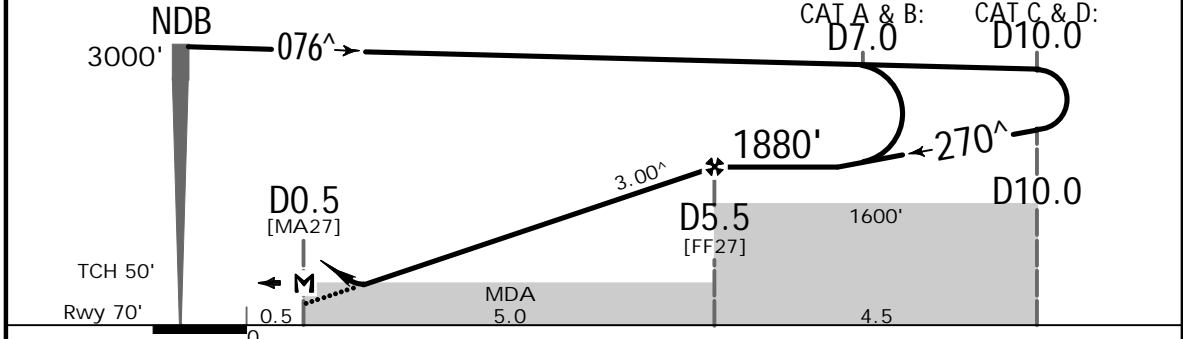
*STANLEY Information (AFIS)

BRIEFING STRIP™

118.1					
NDB SA 305	Final Apch Crs 270 [^]	D5.5 1880' (1810')	DA/MDA(H) 450' (380')	Apt Elev 74'	Rwy 70'
MISSED APCH: Climb STRAIGHT AHEAD. At D7.0 turn RIGHT to NDB and hold. Climb to 3000'.					
Alt Set: hPa	Rwy Elev: 3 hPa	Trans level: By ATC	Trans alt: 5000'	MSA SA NDB	



DFO DME	2.0	3.0	4.0	5.0
ALTITUDE	755'	1075'	1395'	1710'



Gnd speed-Kts	70	90	100	120	140	160	APAPI-L	D7.0 ↑
Descent Angle 3.00 [^]	372	478	531	637	743	849		
MAP at D0.5								

PANS OPS	Standard. STRAIGHT-IN LANDING RWY 27				CIRCLE-TO-LAND Prohibited South of Rwy 09/27 if firearm range active			
	CDFA DA/MDA(H) 450' (380')				Max Kts	MDA(H)	VIS	
	A	RVR 1500m			100	500' (426')	1900m	
	B	RVR 1800m			135	580' (506')	2800m	
	C	RVR 2000m			180	1320' (1246')	3700m	
D	RVR 2000m			205	1320' (1246')	4600m		

Chart changes since cycle 06-2023

ADD = added chart, REV = revised chart, DEL = deleted chart.

ACT PROCEDURE IDENT

INDEX

REV DATE

EFF DATE

STANLEY, (STANLEY - SFAL)

TERMINAL CHART CHANGE NOTICES

No Chart Change Notices for Airport SFAL