

List of pages in this Trip Kit

Trip Kit Index

Airport Information For UKKM

Terminal Charts For UKKM

Revision Letter For Cycle 07-2023

Change Notices

Notebook

General Information

Location: KYIV UKR
ICAO/IATA: UKKM / GML
Lat/Long: N50° 36.22', E030° 11.47'
Elevation: 518 ft

Airport Use: Public
Daylight Savings: Observed
UTC Conversion: -2:00 = UTC
Magnetic Variation: 7.0° E

Fuel Types: Jet A-1
Repair Types: Minor Airframe, Minor Engine, Major Airframe, Major Engine
Customs: Yes
Airport Type: IFR
Landing Fee: Yes
Control Tower: Yes
Jet Start Unit: No
LLWS Alert: No
Beacon: No

Sunrise: 0304 Z
Sunset: 1654 Z

Runway Information

Runway: 15
Length x Width: 11490 ft x 184 ft
Surface Type: concrete
TDZ-Elev: 516 ft
Lighting: Edge, ALS, Centerline, TDZ

Runway: 33
Length x Width: 11490 ft x 184 ft
Surface Type: concrete
TDZ-Elev: 511 ft
Lighting: Edge, ALS, Centerline

Communication Information

Antonov Tower: 120.550
Antonov Radar: 129.550
Antonov Radar: 118.150
Kyiv Radar ACC: 124.675 RCO

Kyiv Radar ACC: 127.725 RCO

Kyiv Radar ACC: 125.300 RCO

UKKM/GML
ANTONOV-2 INTL

JEPESEN
11 FEB 22
Eff. 24 Feb. (30-1R)

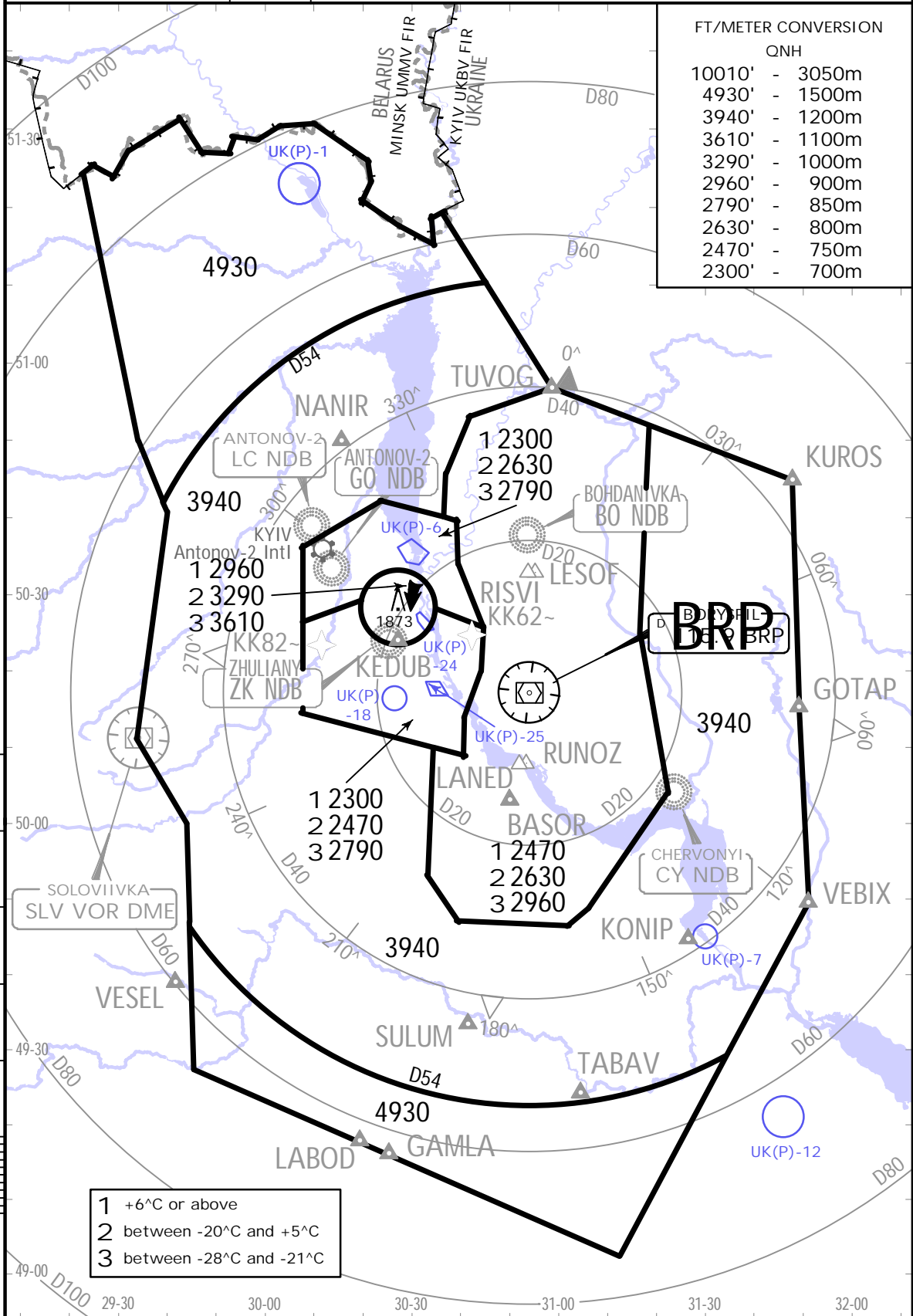
KYIV, UKRAINE
.RADAR.MINIMUM.ALTITUDES.

KYIV Radar
FOR SECTORS REFER TO 10-1
122.775 124.675
125.3
127.725 128.175

Apt Elev
518

Alt Set: hPa (MM on request)
Trans level: By ATC Trans alt: 10010
1. This chart may only be used for cross-checking of altitudes assigned while under vectoring control.
2. Visual manoeuvring (circling) and visual approach in the sector from BRP R004 to BRP R054, from D2.7 to D6.5 BRP below 2470, not authorized.

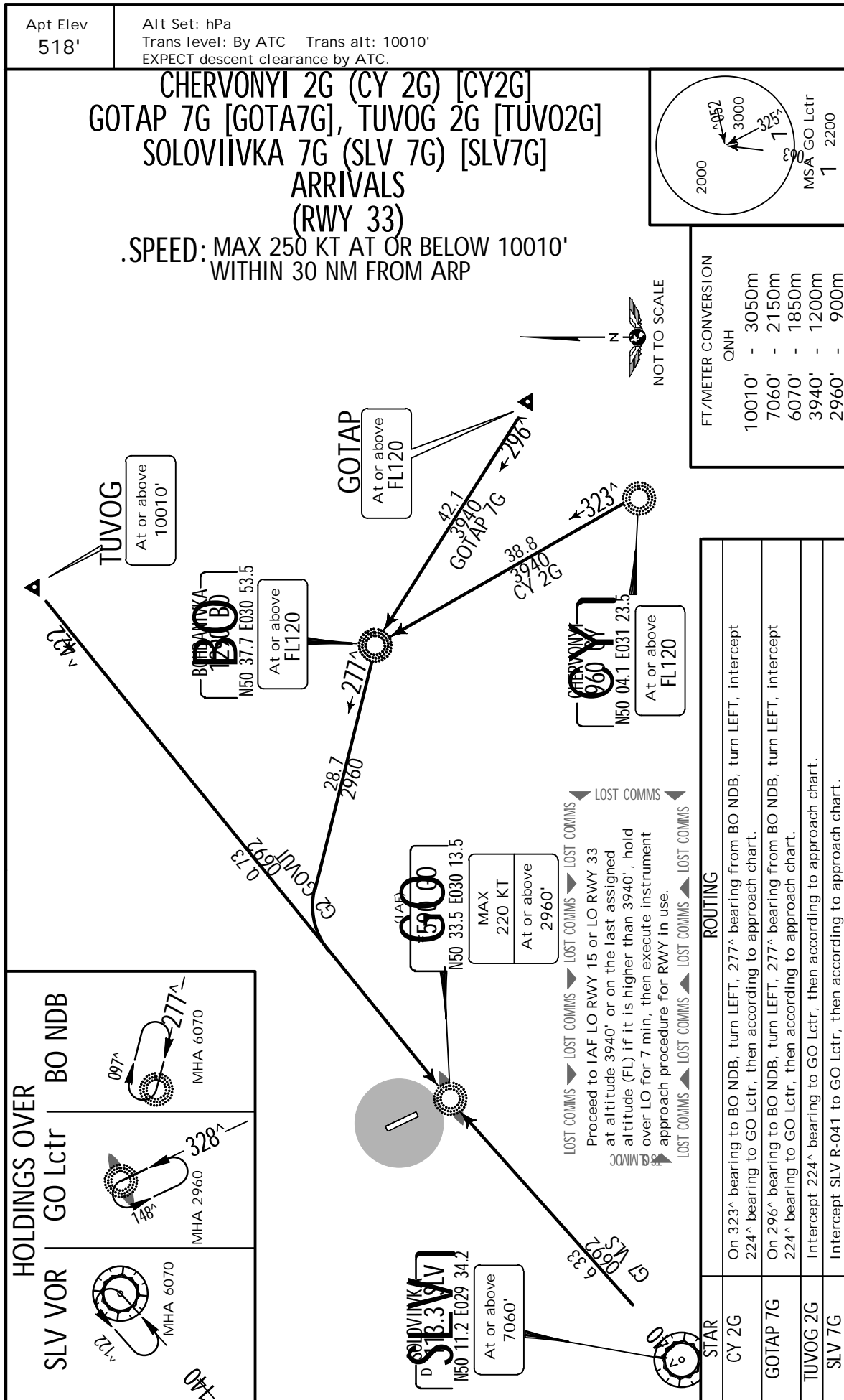
FT/METER CONVERSION	
QNH	
10010'	- 3050m
4930'	- 1500m
3940'	- 1200m
3610'	- 1100m
3290'	- 1000m
2960'	- 900m
2790'	- 850m
2630'	- 800m
2470'	- 750m
2300'	- 700m



UKKM/GML
ANTONOV-2 INTL

JEPPESEN
21 JAN 22 (30-2A) .Eff.27.Jan.

KYIV, UKRAINE
.STAR.

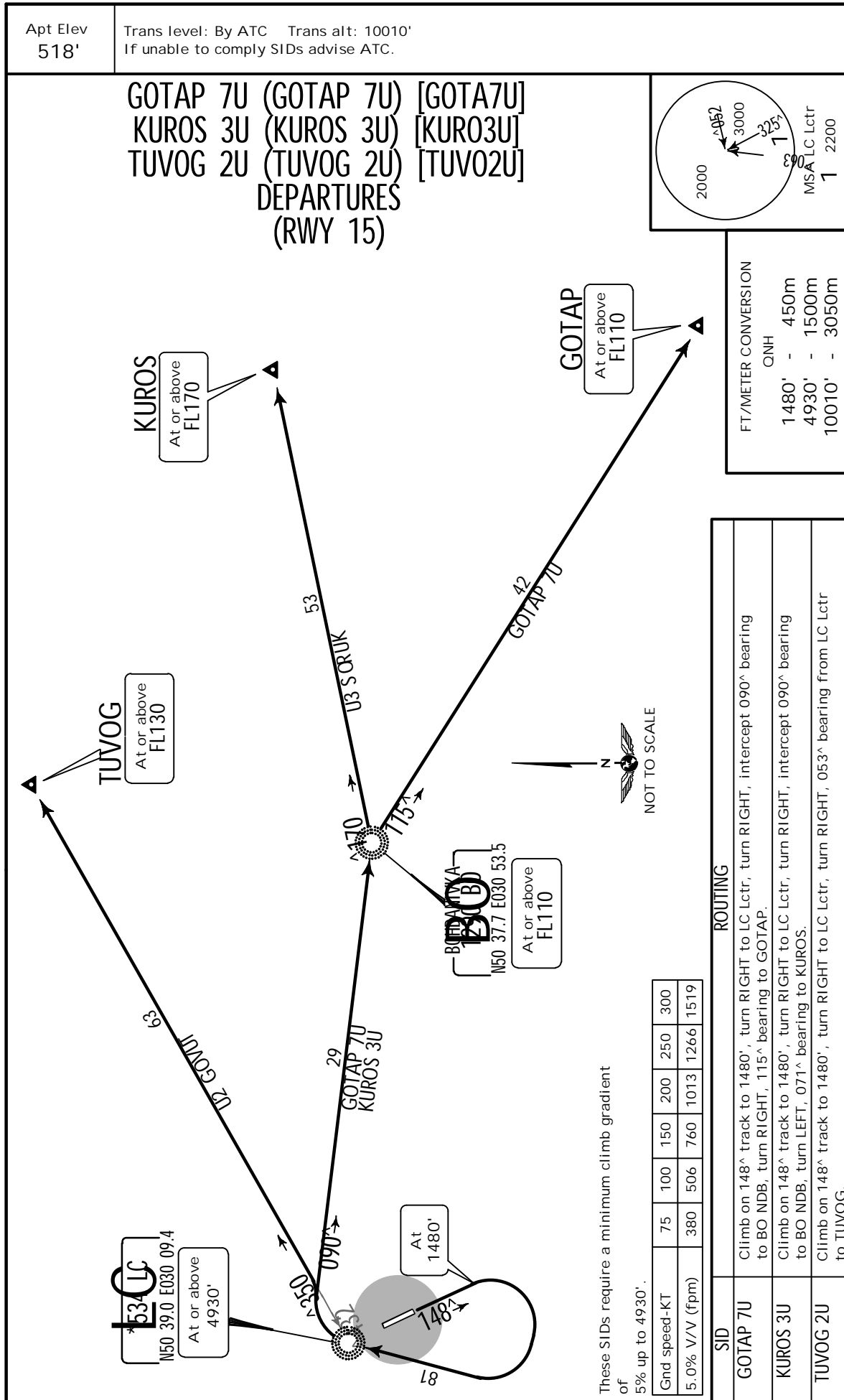


CHANGES: General note revised.

UKKM/GML
ANTONOV-2 INTL

JEPPESEN
17 MAY 19 (30-3) .Eff.23.May.

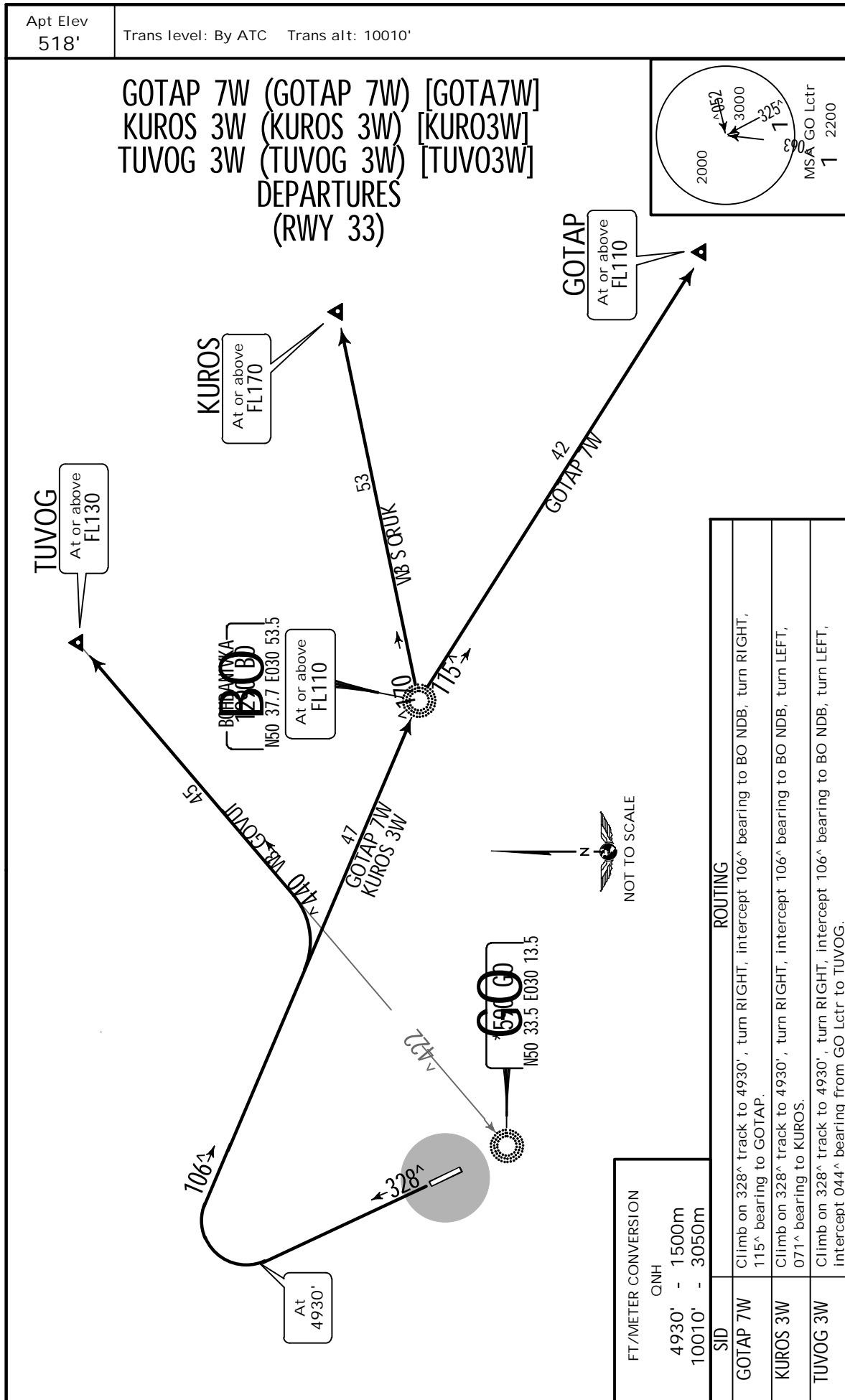
KYIV, UKRAINE
.SID.



UKKM/GML
ANTONOV-2 INTL

JEPPESEN
17 MAY 19 (30-3A) .Eff.23.May.

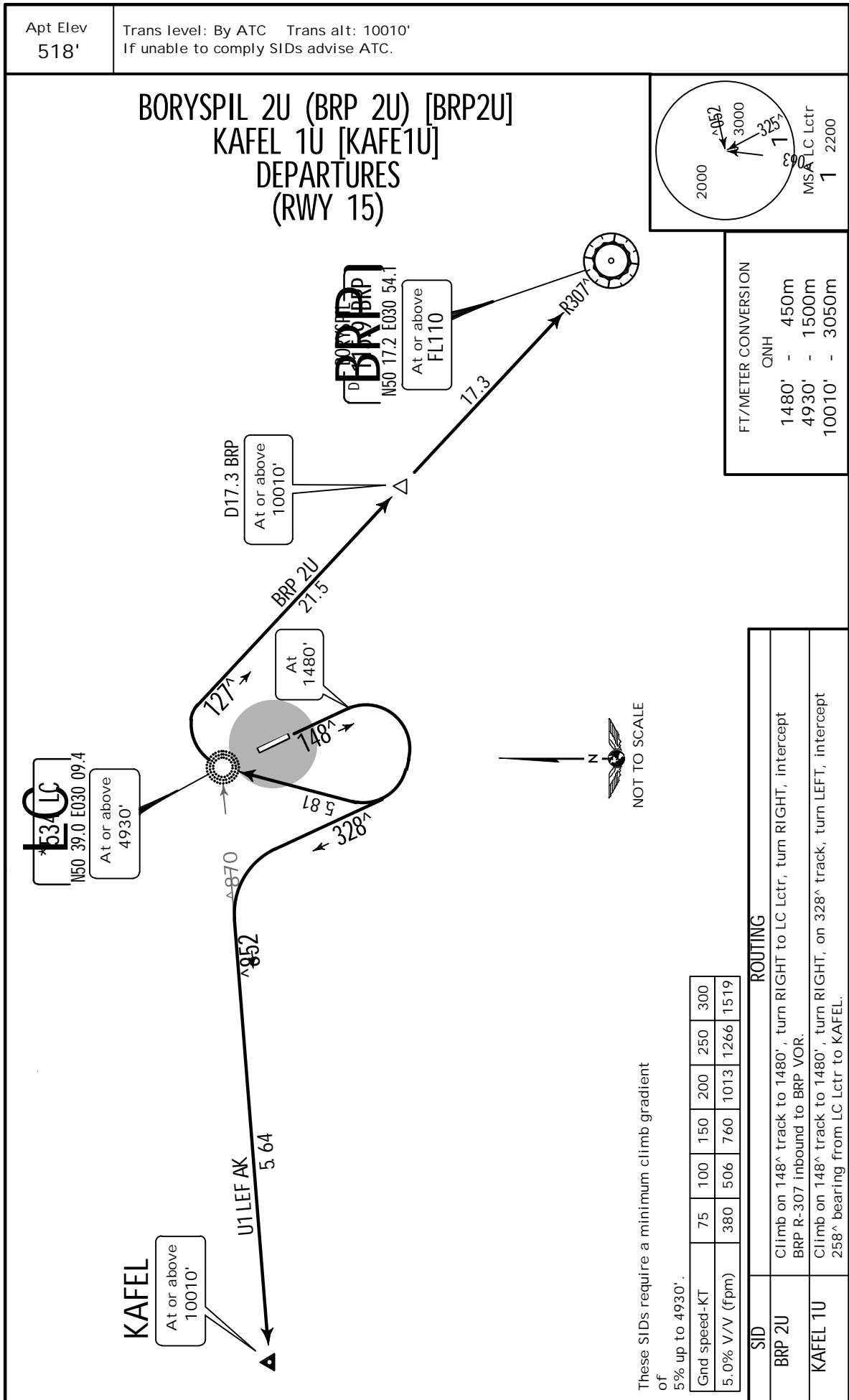
KYIV, UKRAINE
.SID.



UKKM/GML
ANTONOV-2 INTL

JEPPESSEN
1 NOV 19 (30-3B) .Eff.7.Nov.

KYIV, UKRAINE
.SID.



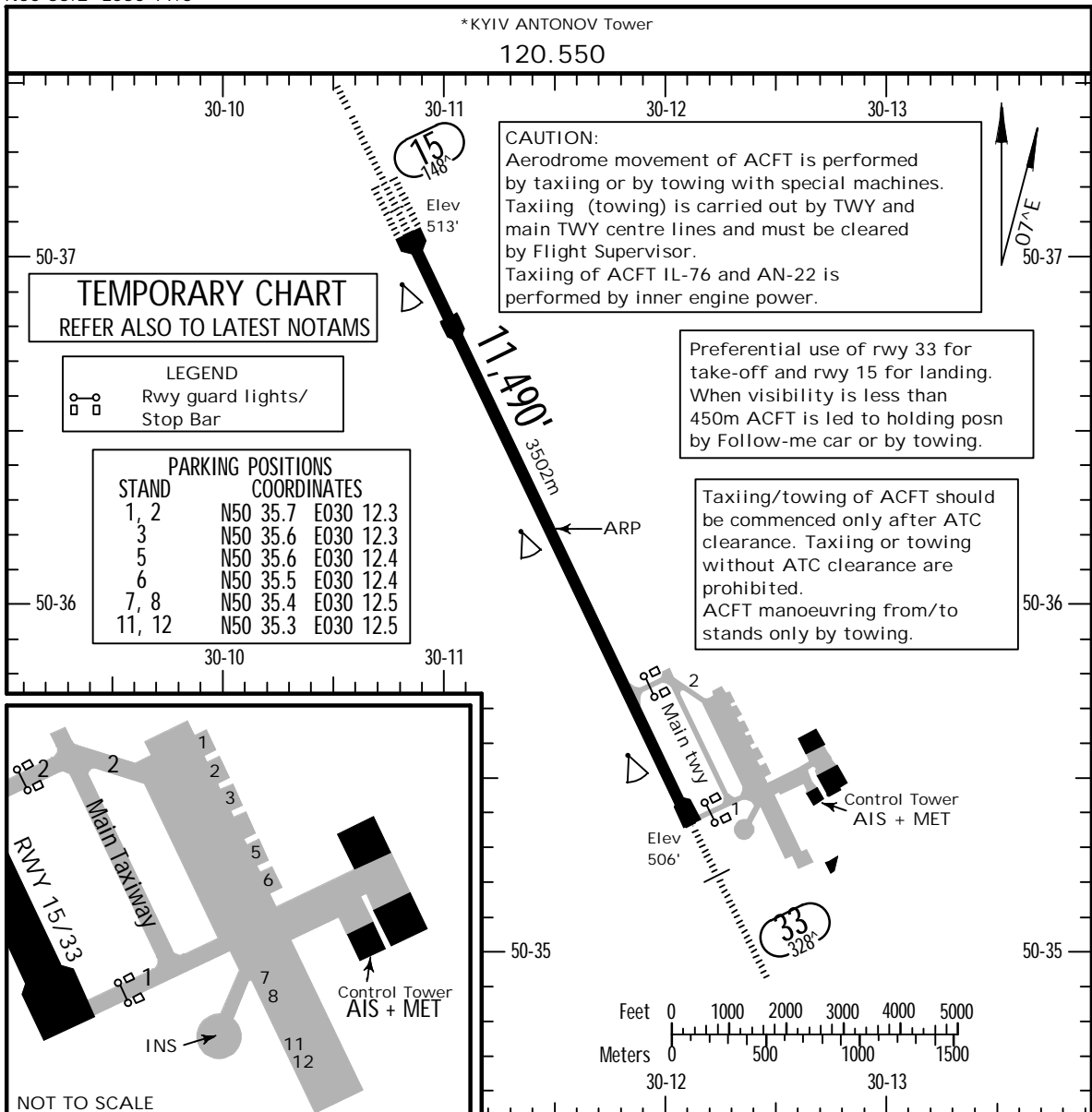
CHANGES: SID KRABOR 3U replaced by KAFEL 1U.

UKKM/GML

Apt Elev 518'
N50 36.2 E030 11.5

JEPPESEN
24 DEC 21 (30-8) .Eff.30.Dec.

KYIV, UKRAINE
ANTONOV-2 INTL



TEMPORARY CHART
REFER ALSO TO LATEST NOTAMS

LEGEND
 Rwy guard lights/
Stop Bar

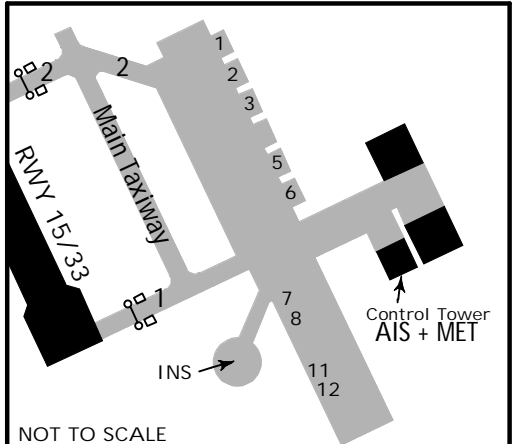
PARKING POSITIONS

STAND	COORDINATES
1, 2	N50 35.7 E030 12.3
3	N50 35.6 E030 12.3
5	N50 35.6 E030 12.4
6	N50 35.5 E030 12.4
7, 8	N50 35.4 E030 12.5
11, 12	N50 35.3 E030 12.5

CAUTION:
Aerodrome movement of ACFT is performed by taxiing or by towing with special machines. Taxiing (towing) is carried out by TWY and main TWY centre lines and must be cleared by Flight Supervisor. Taxiing of ACFT IL-76 and AN-22 is performed by inner engine power.

Preferential use of rwy 33 for take-off and rwy 15 for landing. When visibility is less than 450m ACFT is led to holding posn by Follow-me car or by towing.

Taxiing/towing of ACFT should be commenced only after ATC clearance. Taxiing or towing without ATC clearance are prohibited. ACFT manoeuvring from/to stands only by towing.



ADDITIONAL RUNWAY INFORMATION

RWY	HIRL (60m) CL (30m) HIALS-II TDZ 1	RVR	USABLE LENGTHS		WIDTH
			Threshold	Glide Slope	
15	HIRL (60m) CL (30m) HIALS-II TDZ 1	RVR		10,457' 3187m	184'
33	HIRL (60m) CL (30m) HIALS 1	RVR		10,579' 3224m	56m

- 1 PAPI-L (angle 3.0^)
- 2 TAKE-OFF RUN AVAILABLE
RWY 33:
From rwy head 11,490' (3502m)
twy 2 int 9521' (2902m)

.JAR-OPS.

TAKE-OFF 1

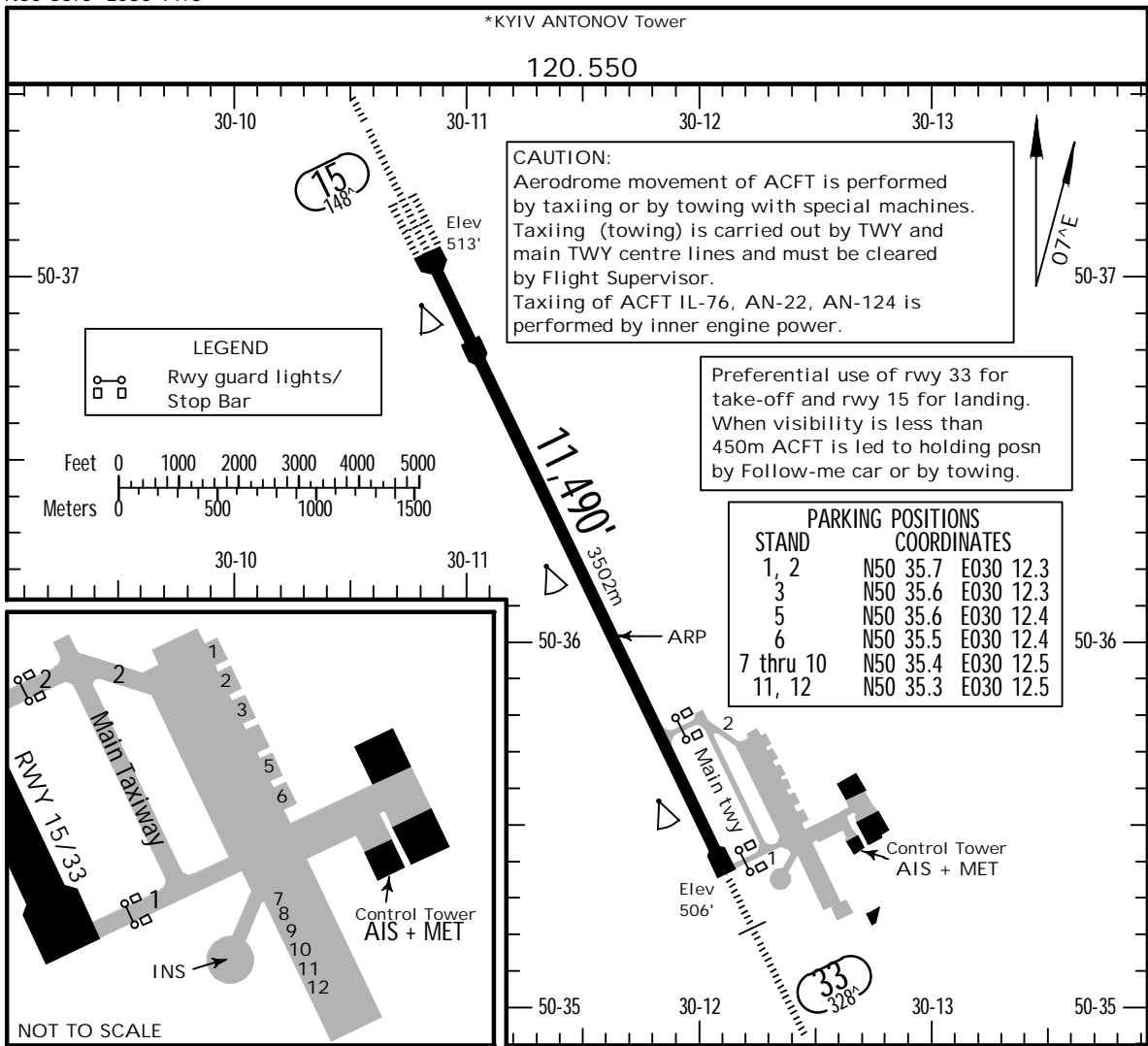
	All Rwys				NIL (DAY only)
	LVP must be in force				
	RL, CL & mult. RVR req	RL & CL	RCLM (DAY only) or RL	RCLM (DAY only) or RL	
A					
B	150m	200m	250m	400m	500m
C					
D	200m	250m	300m		

1 Operators applying U.S. Ops Specs: CL required below 300m.

UKKM/GML
 Apt Elev **518'**
 N50 36.0 E030 11.6

JEPPESSEN
 10 APR 20 **(30-9)** .Eff.23.Apr.

KYIV, UKRAINE
 ANTONOV-2 INTL



ADDITIONAL RUNWAY INFORMATION

RWY	USABLE LENGTHS				
	LANDING BEYOND		TAKE-OFF	WIDTH	
	Threshold	Glide Slope			
15	HIRL (60m) CL (30m) HIALS-II PAPI-L (3.0°) RVR	10,457'	3187m		184'
33	HIRL (60m) CL (30m) HIALS PAPI-L (3.0°) RVR	10,579'	3224m		56m

.JAR-OPS. TAKE-OFF 1

All Rwys

LVP must be in force

	RL, CL & mult. RVR req	RL & CL	RCLM (DAY only) or RL	RCLM (DAY only) or RL	NIL (DAY only)
A					
B	150m	200m	250m	400m	500m
C					
D	200m	250m	300m		

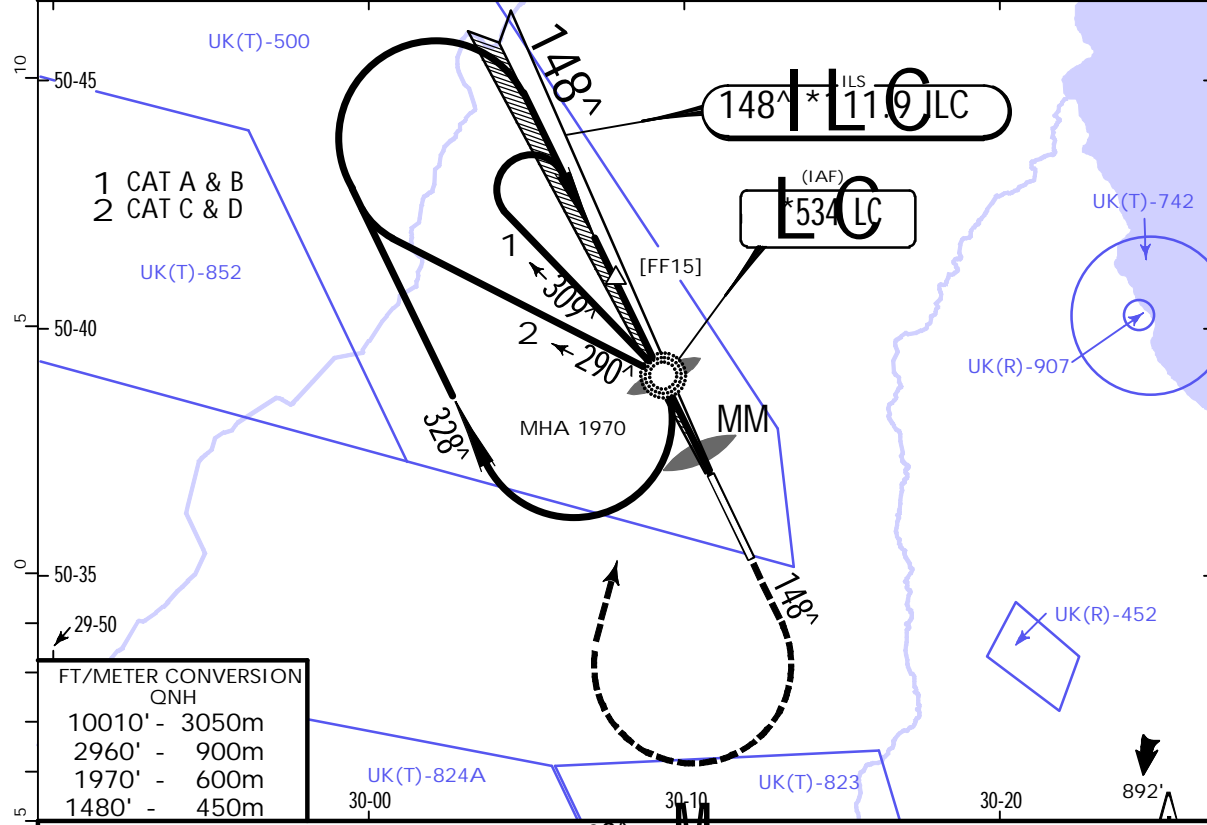
1 Operators applying U.S. Ops Specs: CL required below 300m.

UKKM/GML
ANTONOV-2 INTL

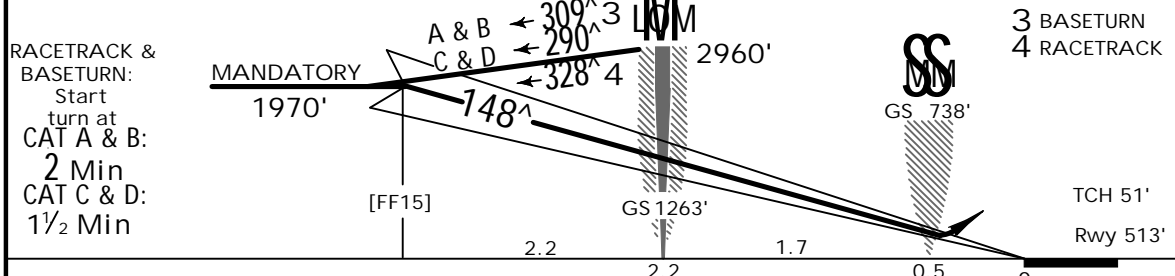
JEPESEN
25 DEC 20 (31-1) .Eff.31.Dec.

KYIV, UKRAINE
ILS Rwy 15

*KYIV Radar			*KYIV ANTONOV Tower		
125.3		127.725		120.550	
LOC ILC *111.9	Final Apch Crs 148^	No FAF	ILS DA(H) 713' (200')	Apt Elev 518'	Rwy 513'
MISSED APCH: Climb on 148^ to 1480', then turn RIGHT climbing to 2960' to LC NDB, then according to chart.					<p>MSA LC NDB</p>
Alt Set: hPa (MM on req)		Rwy Elev: 19 hPa		Trans level: By ATC	
				Trans alt: 10010'	



FT/METER CONVERSION	
QNH	
10010'	3050m
2960'	900m
1970'	600m
1480'	450m



Gnd speed-Kts	70	90	100	120	140	160	HIALS-II PAPI
GS	3.00^	372	478	531	637	743	

PANS OPS	JAR-OPS.		STRAIGHT-IN LANDING RWY 15		CIRCLE-TO-LAND	
	ILS DA(H) 713' (200')		LOC (GS out)			
	FULL		ALS out		Max Kts	MDA(H) VIS
	A				100	990' (472') 1500m
	B				135	1050' (532') 1600m
C	RVR 550m	RVR 1000m	NOT AUTHORIZED		180	1150' (632') 2400m
D					205	1220' (702') 3600m

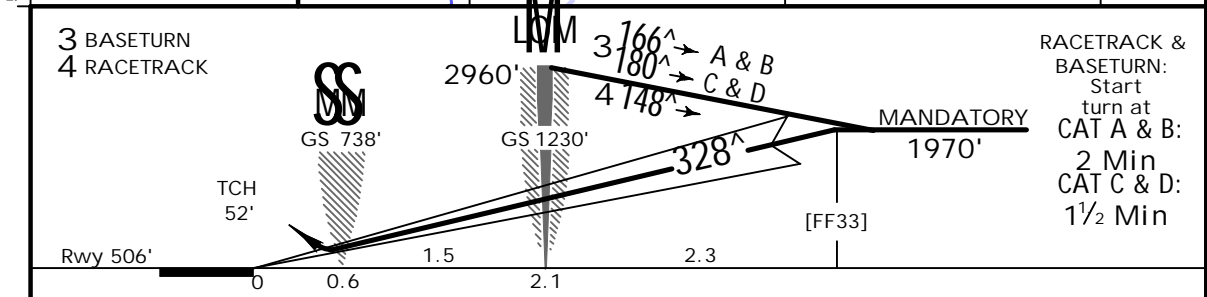
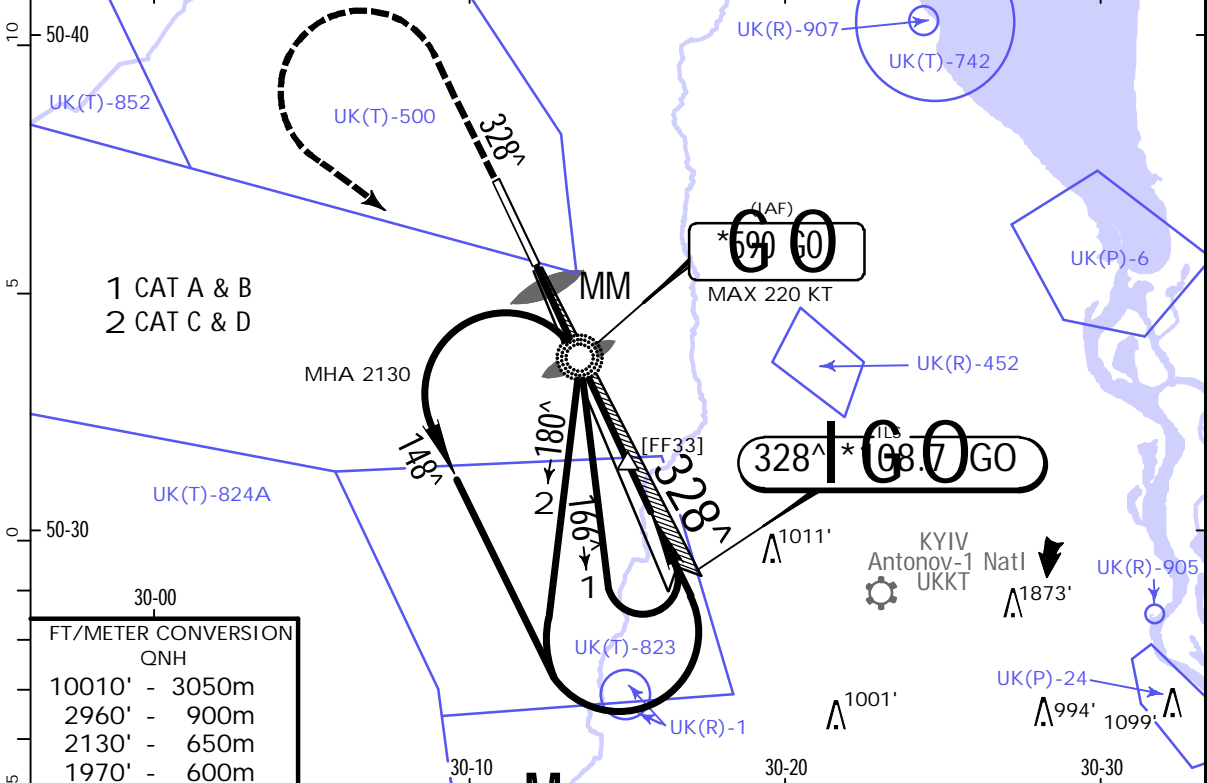
UKKM/GML
ANTONOV-2 INTL

JEPPESSEN
25 DEC 20 **(31-2)** .Eff.31.Dec.

KYIV, UKRAINE
ILS Rwy 33

*KYIV Radar			*KYIV ANTONOV Tower		
125.3		127.725		120.550	
LOC IGO *108.7	Final Apch Crs 328[^]	No FAF	ILS DA(H) 706' (200')	Apt Elev 518' Rwy 506'	<p>2000 2200 2500 3000 250° 325° 109°</p> <p>MSA GO NDB</p>
<p>MISSED APCH: Climb on 328[^] to 1970', then turn LEFT climbing to 2960' to GO NDB, then according to chart.</p>					

Alt Set: hPa (MM on req) Rwy Elev: 18 hPa Trans level: By ATC Trans alt: 10010'



Gnd speed-Kts	70	90	100	120	140	160	HIALS PAPI	1970' ↑ on 328 [^]
GS	3.00 [^]	372	478	531	637	743		849

PANS OPS	JAR-OPS. STRAIGHT-IN LANDING RWY 33			CIRCLE-TO-LAND		
	ILS		LOC (GS out)			
	DA(H) 706' (200')					
	FULL		ALS out			
	A				Max Kts	MDA(H)
B				100	990' (472')	1500m
C	RVR 550m	RVR 1000m	NOT AUTHORIZED		135	1050' (532') 1600m
D				180	1150' (632')	2400m
				205	1220' (702')	3600m

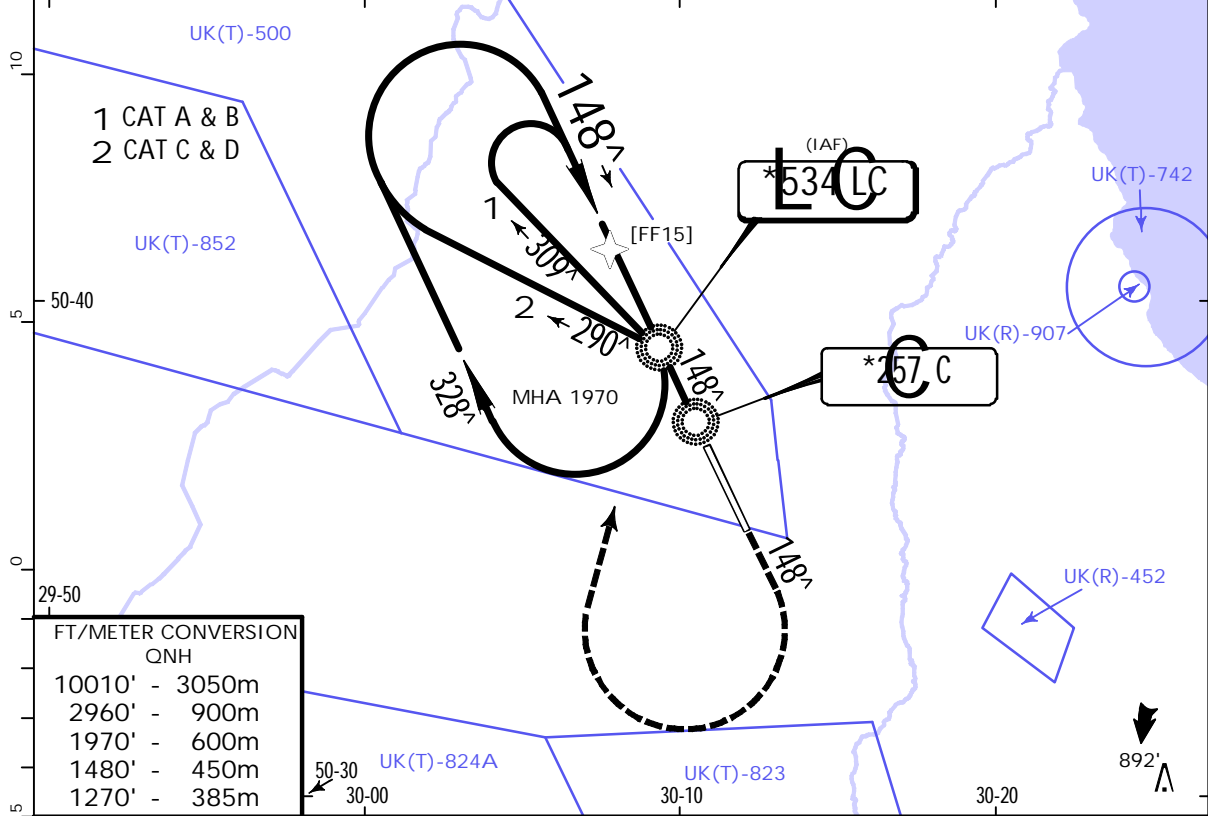
UKKM/GML
ANTONOV-2 INTL

JEPPESSEN
25 DEC 20 (36-1) .Eff.31.Dec.

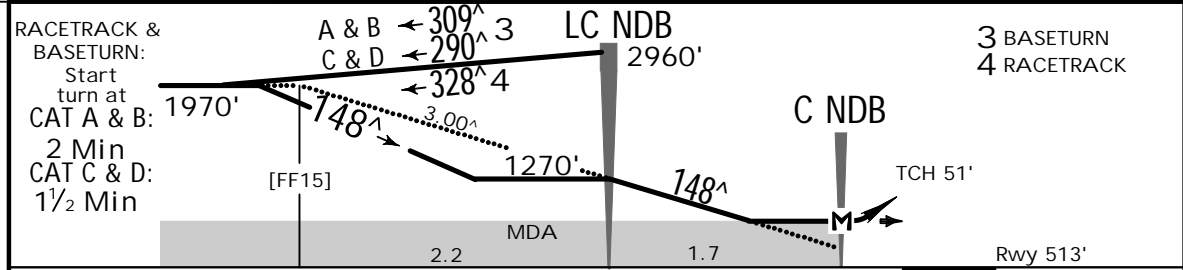
KYIV, UKRAINE
NDB Rwy 15

*KYIV Radar			*KYIV ANTONOV Tower		
125.3		127.725		120.550	
NDB LC *534	Final Apch Crs 148[^]	No FAF	MDA(H) 920' (407')	Apt Elev 518' Rwy 513'	
MISSED APCH: Climb on 148 [^] to 1480', then turn RIGHT climbing to 2960' to LC NDB, then as directed.					<p>MSA LC NDB</p>

Alt Set: hPa (MM on req) Rwy Elev: 19 hPa Trans level: By ATC Trans alt: 10010'



FT/METER CONVERSION QNH	
10010'	- 3050m
2960'	- 900m
1970'	- 600m
1480'	- 450m
1270'	- 385m



Gnd speed-Kts	70	90	100	120	140	160	HI ALS-II PAPI
Descent Angle	3.00 [^]	372	478	531	637	743	

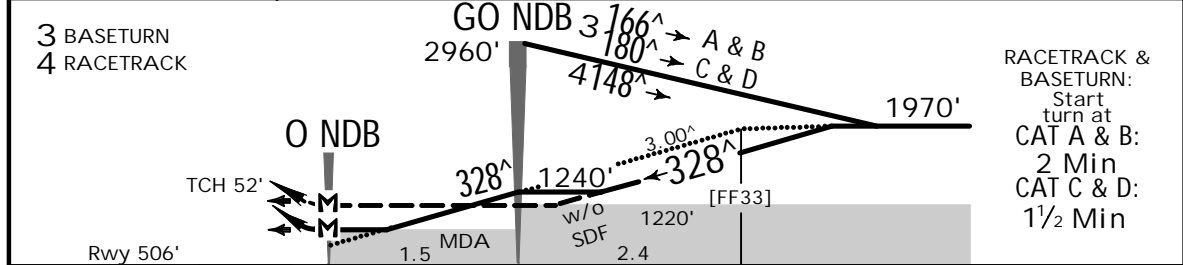
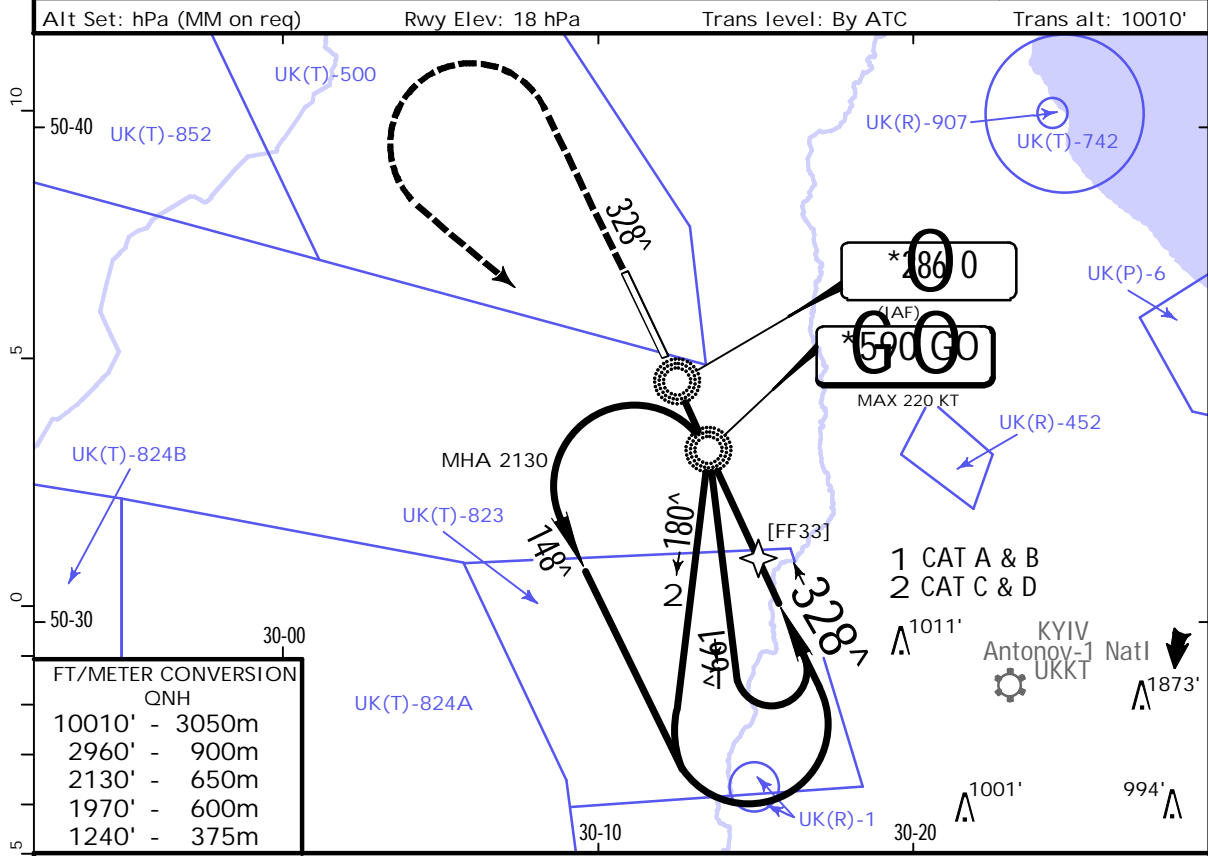
STRAIGHT-IN LANDING RWY 15				CIRCLE-TO-LAND				
MDA(H) 920' (407')								
				ALS out		Max Kts	MDA(H)	VIS
A	RVR 900m			RVR 1500m	100	990'	(472')	1500m
B	RVR 1000m			RVR 1800m	135	1050'	(532')	1600m
C				RVR 2000m	180	1150'	(632')	2400m
D	RVR 1400m				205	1220'	(702')	3600m

UKKM/GML
ANTONOV-2 INTL

JEPESEN
25 DEC 20 (36-2) .Eff.31.Dec.

KYIV, UKRAINE
NDB Rwy 33

*KYIV Radar			*KYIV ANTONOV Tower		
125.3		127.725		120.550	
NDB GO *590	Final Apch Crs 328^	No FAF	MDA(H) (CONDITIONAL) 940' (434')	Apt Elev 518' Rwy 506'	
MISSED APCH: Climb on 328^ to 1970', then turn LEFT climbing to 2960' to GO NDB, then according to chart.					<p>MSA GO NDB</p>



Gnd speed-Kts	70	90	100	120	140	160	HIALS
Descent Angle 3.00^	372	478	531	637	743	849	

.JAR-OPS. STRAIGHT-IN LANDING RWY 33				CIRCLE-TO-LAND 1			
with SDF at GO NDB		w/o SDF		Max Kts.		MDA(H) VIS	
MDA(H) 940' (434')		MDA(H) 1220' (714')					
	ALS out		ALS out				
A	RVR 900m	RVR 1500m	RVR 1200m	RVR 1500m	100	1220' (714')	1500m
B	RVR 1000m	RVR 1800m	RVR 1400m	RVR 2000m	135	1220' (714')	1600m
C	RVR 1400m	RVR 2000m	RVR 1800m	RVR 1800m	180	1220' (714')	2400m
D	RVR 1400m	RVR 2000m	RVR 1800m	RVR 1800m	205	1220' (714')	3600m

1 Circling height based on rwy 33 thresh elev of 506'.
 CHANGES: UK(R)-907 & UK(T)-742 added. | JEPESEN, 2000, 2020. ALL RIGHTS RESERVED.

Chart changes since cycle 06-2023

ADD = added chart, REV = revised chart, DEL = deleted chart.

ACT PROCEDURE IDENT

INDEX

REV DATE

EFF DATE

KYIV, (ANTONOV-2 INTL - UKKM)

TERMINAL CHART CHANGE NOTICES

Chart Change Notices for Airport UKKM

Type: Terminal

Effectivity: Temporary

Begin Date: 20211230

End Date: Until Further Notice

Based on AIRAC SUP 014/21 chart 30-9 suspended. Refer to temp chart 30-8 and latest NOTAMs.