

List of pages in this Trip Kit

Trip Kit Index

Airport Information For ZJSY

Terminal Charts For ZJSY

Revision Letter For Cycle 11-2024

Change Notices

Notebook

General Information

Location: SANYA CHN
ICAO/IATA: ZJSY / SYX
Lat/Long: N18° 18.10', E109° 24.80'
Elevation: 94 ft

Airport Use: Public
Daylight Savings: Not Observed
UTC Conversion: -8:00 = UTC
Magnetic Variation: 2.0° W

Fuel Types: Jet A-1
Repair Types: Minor Airframe, Minor Engine
Customs: Yes
Airport Type: IFR
Landing Fee: Yes
Control Tower: Yes
Jet Start Unit: No
LLWS Alert: No
Beacon: No

Sunrise: 2205 Z
Sunset: 1115 Z

Runway Information

Runway: 08
Length x Width: 11155 ft x 148 ft
Surface Type: concrete
TDZ-Elev: 71 ft
Lighting: Edge, ALS, Centerline
Stopway: 197 ft

Runway: 26
Length x Width: 11155 ft x 148 ft
Surface Type: concrete
TDZ-Elev: 94 ft
Lighting: Edge, ALS, Centerline
Stopway: 197 ft

Communication Information

ATIS: 131.450
ATIS: 126.450
Fenghuang Tower: 118.150
Fenghuang Tower: 118.850 Secondary
Fenghuang Ground: 121.700
Fenghuang Apron Ramp/Taxi: 121.600
Sanya Approach: 119.250 Secondary
Sanya Approach: 125.550

Sanya Approach: 127.925

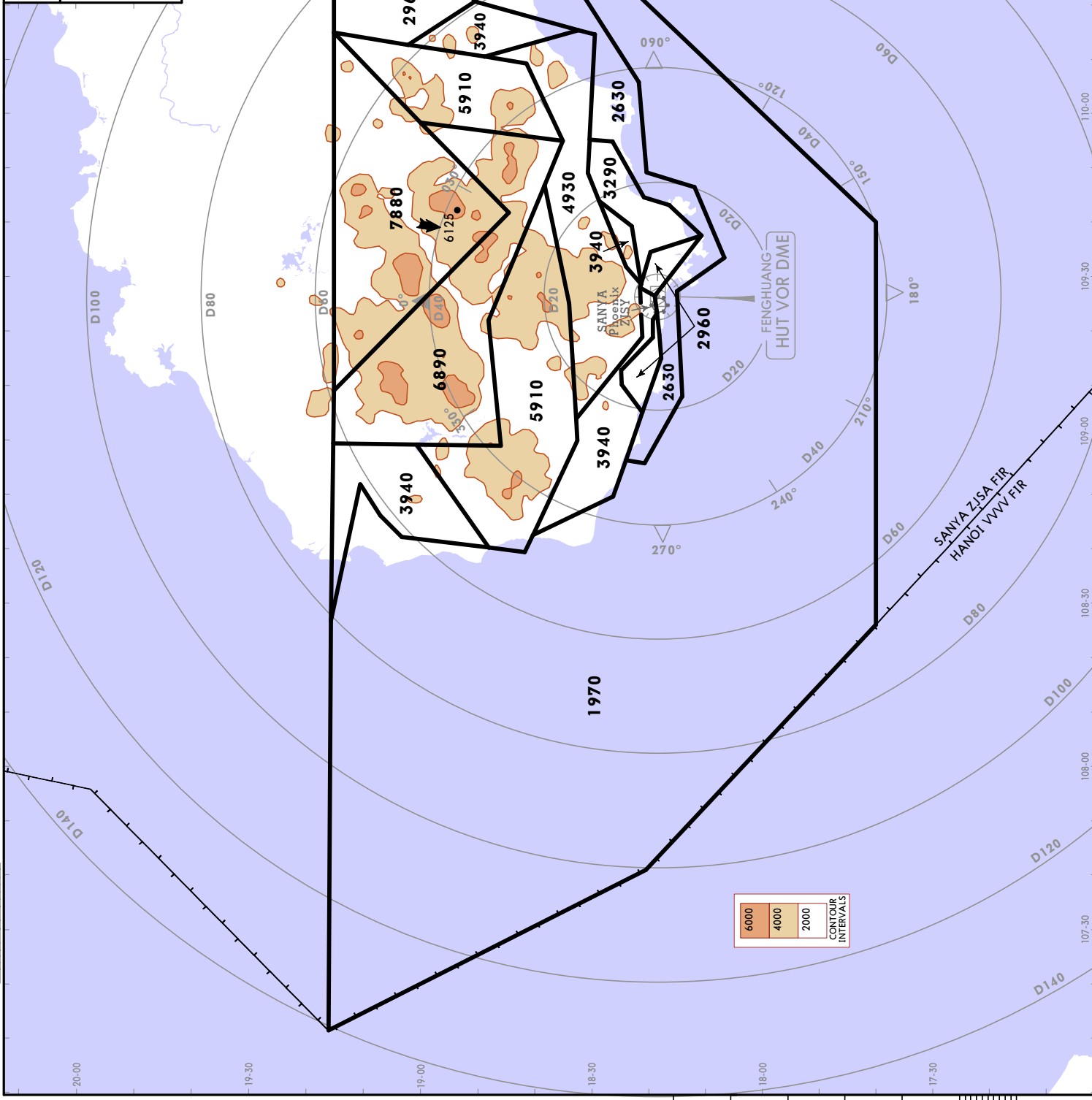
SANYA, PR OF CHINA

RADAR MINIMUM ALTITUDES

SANYA Approach (R)
125.550
 Apt Elev
94

Alt Set: hPa
 Trans level: FL118
 Trans alt: 9850
 10830 1031 hPa or above
 8860 979 hPa or below
 Chart only to be used for cross-checking of altitudes while under RADAR control.

FL CONVERSION	
FL118	FL3600m
10830'	3300m
9850'	3000m
8860'	2700m
7880'	2400m
6890'	2100m
5910'	1800m
4930'	1500m
3940'	1200m
3290'	1000m
2960'	900m
2630'	800m
1970'	600m



CONTOUR INTERVALS	
6000	4000
2000	

ZJSY/SYX
PHOENIX

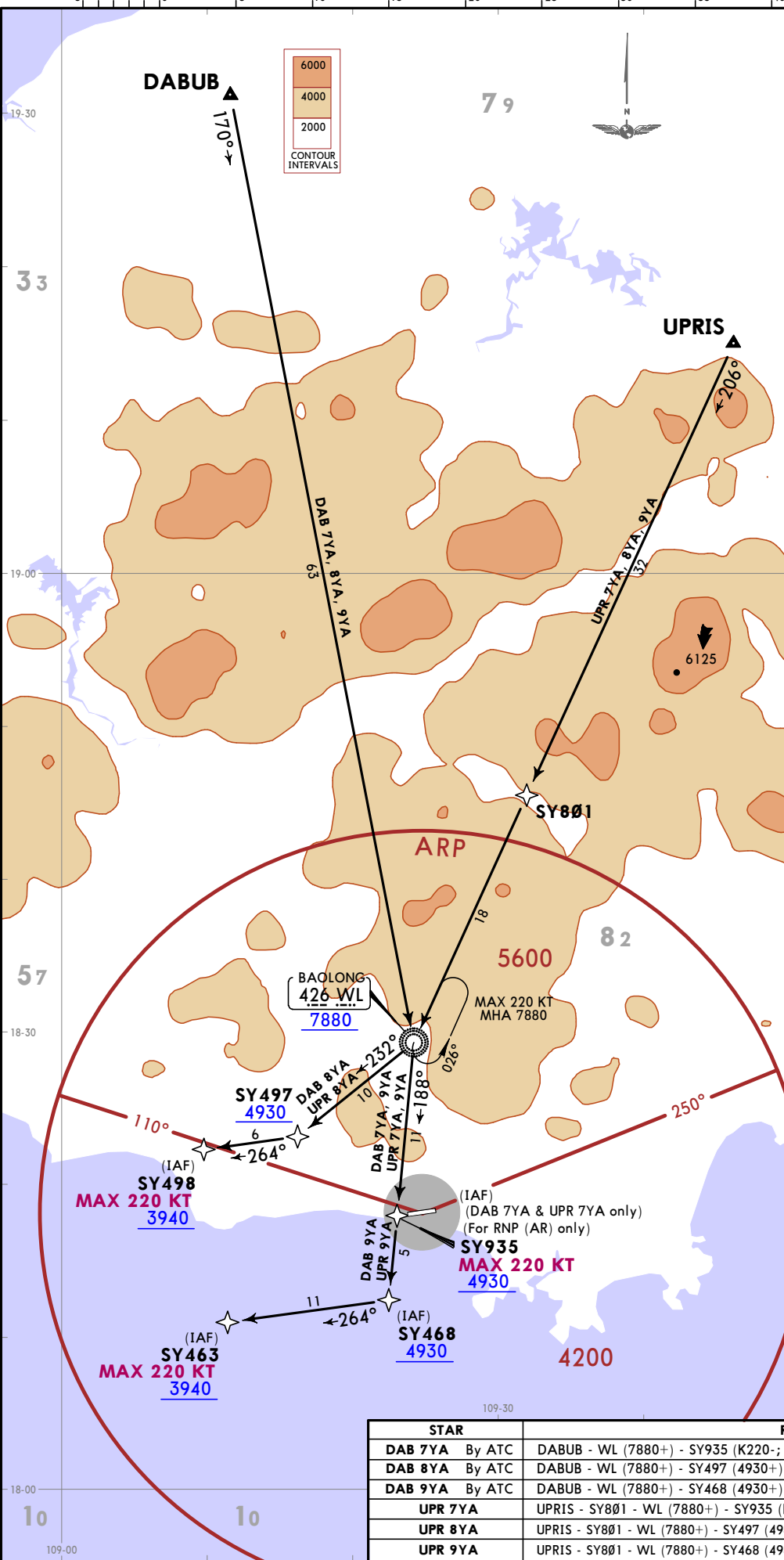
JEPPESEN
 4 SEP 20
 Eff 9 Sep 1600Z (10-1R)

CHANGES: Sensor requirements; RNAV STARs added and revised; MSA.

ZJSY/SYX
PHOENIX

D-ATIS 126.45	Alt Set: hPa Trans Level: FL118
Apt Elev 94	RNAV 1 GNSS or RNP1 GNSS
RADAR required for RNAV 1.	

**DAB 7YA, DAB 8YA, DAB 9YA
UPR 7YA, UPR 8YA, UPR 9YA
RNAV ARRIVALS
(RWY 08)**



FL CONVERSION	
FL118	FL3600m
FT/METER CONVERSION	
QNH	
7880'	2400m
4930'	1500m
3940'	1200m

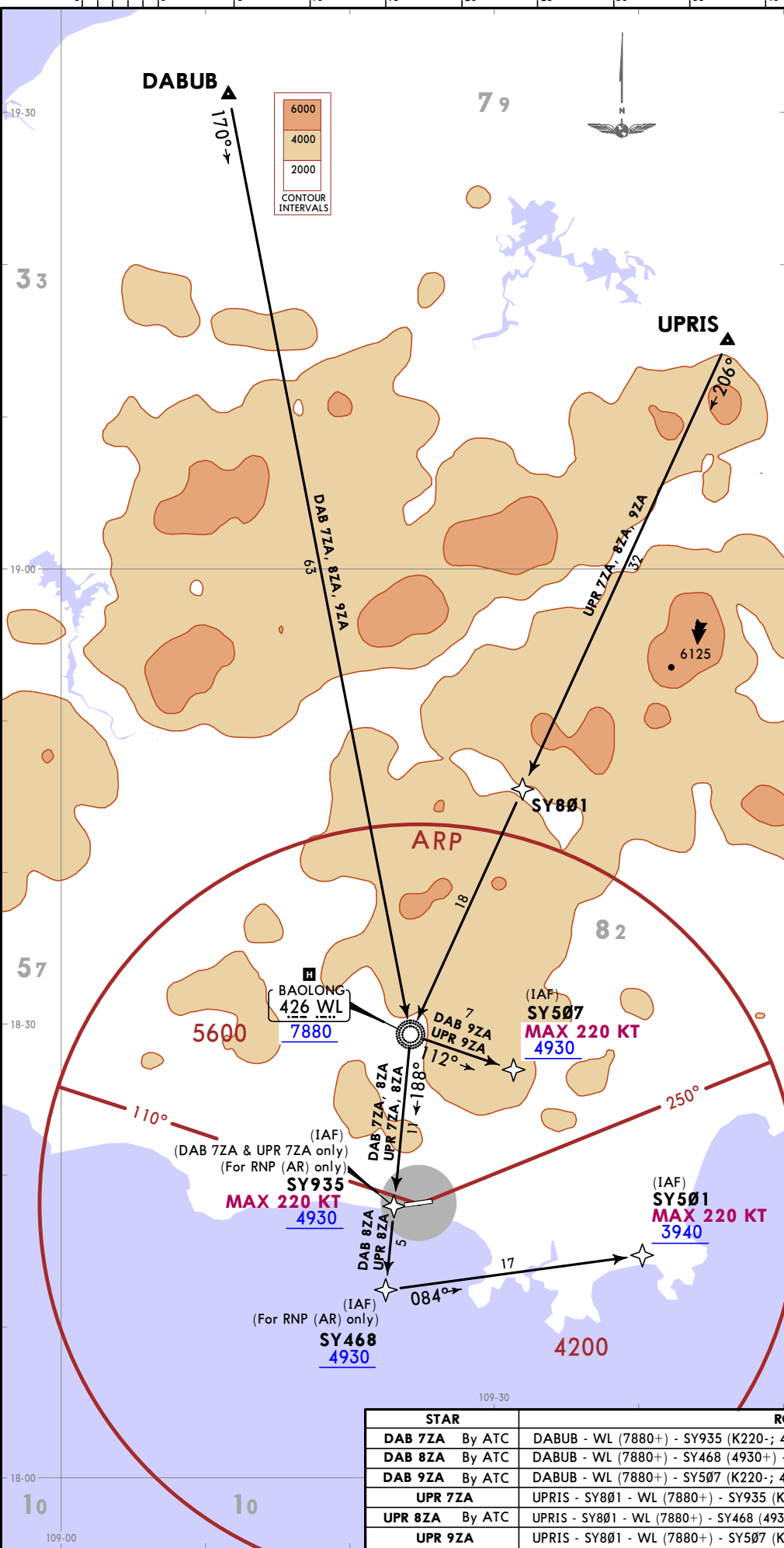
STAR	ROUTING
DAB 7YA By ATC	DABUB - WL (7880+) - SY935 (K220-; 4930+).
DAB 8YA By ATC	DABUB - WL (7880+) - SY497 (4930+) - SY498 (K220-; 3940+).
DAB 9YA By ATC	DABUB - WL (7880+) - SY468 (4930+) - SY463 (K220-; 3940+).
UPR 7YA	UPRIS - SY801 - WL (7880+) - SY935 (K220-; 4930+).
UPR 8YA	UPRIS - SY801 - WL (7880+) - SY497 (4930+) - SY498 (K220-; 3940+).
UPR 9YA	UPRIS - SY801 - WL (7880+) - SY468 (4930+) - SY463 (K220-; 3940+).

**DAB 7YA, DAB 8YA, DAB 9YA
UPR 7YA, UPR 8YA, UPR 9YA
RNAV ARRIVALS
(RWY 08)**

19 JAN 24
JEPPESSEN SANYA, PR OF CHINA
10-2 Eff 24 Jan 1600Z
RNAV STAR

© JEPPESSEN, 2024. ALL RIGHTS RESERVED.

CHANGES: Sensor requirements; RNAV STARs added and revised; MSA.



D-ATIS 126.45	Alt Set: hPa Trans Level: FL118
Apt Elev 94	RNAV 1 GNSS or RNP1 GNSS
RADAR required for RNAV 1.	

**DAB 7ZA, DAB 8ZA, DAB 9ZA
UPR 7ZA, UPR 8ZA, UPR 9ZA
RNAV ARRIVALS
(RWY 26)**

BAOLONG
426 WL
7880

(IAF)
SY507
MAX 220 KT
4930

(IAF)
SY501
MAX 220 KT
3940

(IAF)
SY935
MAX 220 KT
4930

(IAF)
SY468
(For RNP (AR) only)
4930

MAX 220 KT
MHA 7880

FL CONVERSION	
FL118	FL3600m
FT/METER CONVERSION	
QNH	
7880'	2400m
4930'	1500m
3940'	1200m

STAR	ROUTING
DAB 7ZA By ATC	DABUB - WL (7880+) - SY935 (K220-; 4930+).
DAB 8ZA By ATC	DABUB - WL (7880+) - SY468 (4930+) - SY501 (K220-; 3940+).
DAB 9ZA By ATC	DABUB - WL (7880+) - SY507 (K220-; 4930+).
UPR 7ZA	UPRIS - SY801 - WL (7880+) - SY935 (K220-; 4930+).
UPR 8ZA By ATC	UPRIS - SY801 - WL (7880+) - SY468 (4930+) - SY501 (K220-; 3940+).
UPR 9ZA	UPRIS - SY801 - WL (7880+) - SY507 (K220-; 4930+).

**DAB 7ZA, DAB 8ZA, DAB 9ZA
UPR 7ZA, UPR 8ZA, UPR 9ZA
RNAV ARRIVALS
(RWY 26)**

ZJSY/SYX
PHOENIX
JEPPesen
19 JAN 24 10-2A
SANYA, PR OF CHINA
RNAV STAR

© JEPPesen, 2024. ALL RIGHTS RESERVED.

ZJSY/SYX
PHOENIX

JEPPESEN

SANYA, PR OF CHINA

19 JAN 24

(10-2B)

Eff 24 Jan 1600Z

RNAV STAR

D-ATIS 126.45	Apt Elev 94	Alt Set: hPa Trans Level: FL118	
		RNAV 1 GNSS or RNP1 GNSS	RADAR required for RNAV 1.

KAG 9YA
RNAV ARRIVAL
(RWY 08)



FL CONVERSION	
FL118	FL3600m
FT/METER CONVERSION	
QNH	
3940'	1200m

ROUTING
KAGUK - AGEGI - SY464 - SY462 (K220-; 3940+).

ZJSY/SYX
PHOENIX

JEPPESSEN
19 JAN 24 (10-2C)

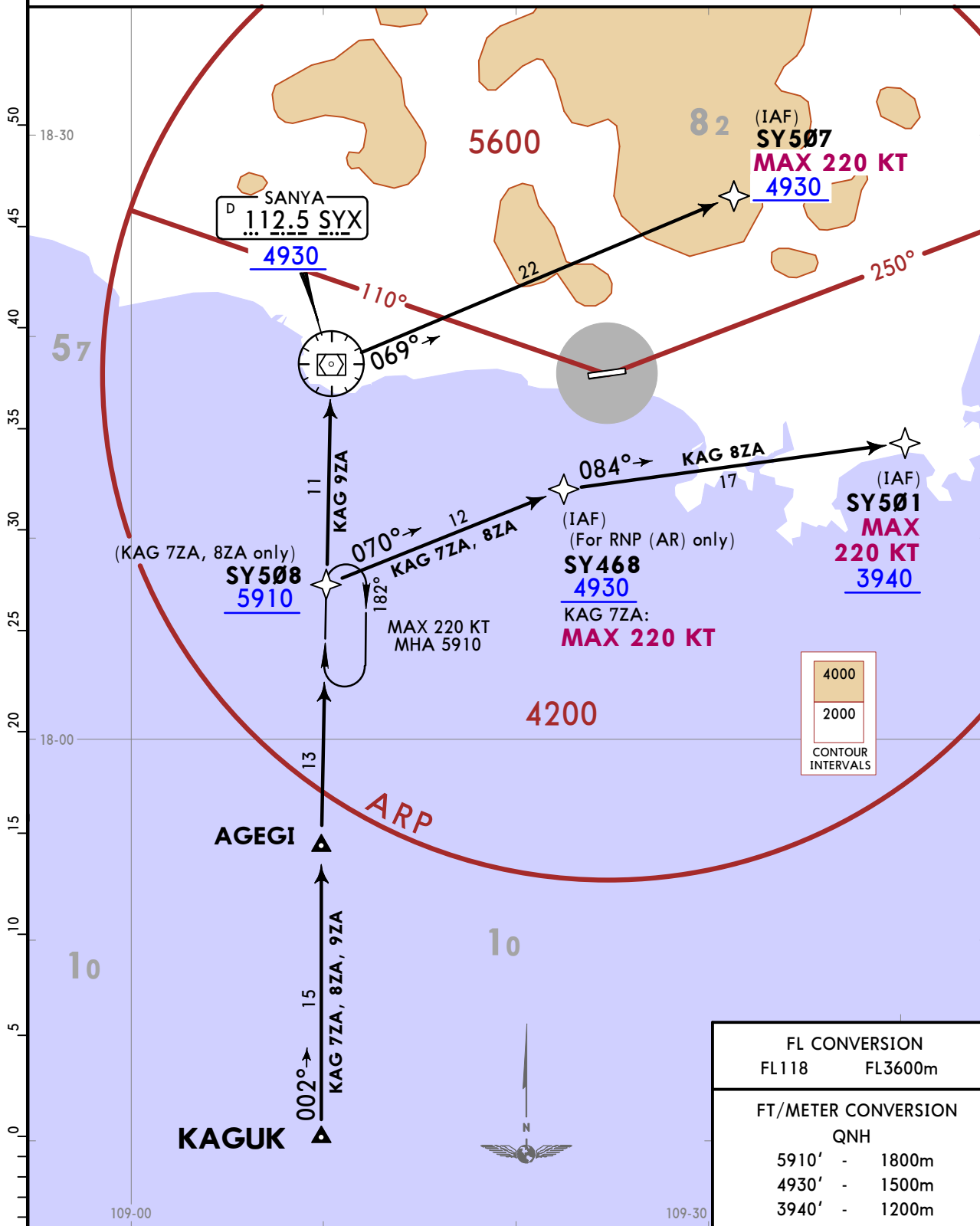
SANYA, PR OF CHINA

Eff 24 Jan 1600Z

RNAV STAR

D-ATIS 126.45	Apt Elev 94	Alt Set: hPa Trans Level: FL118
		RNAV 1 or RNP1 GNSS
		RADAR required for RNAV 1.

KAG 7ZA, KAG 8ZA, KAG 9ZA
RNAV ARRIVALS
(RWY 26)



4000
2000
CONTOUR INTERVALS

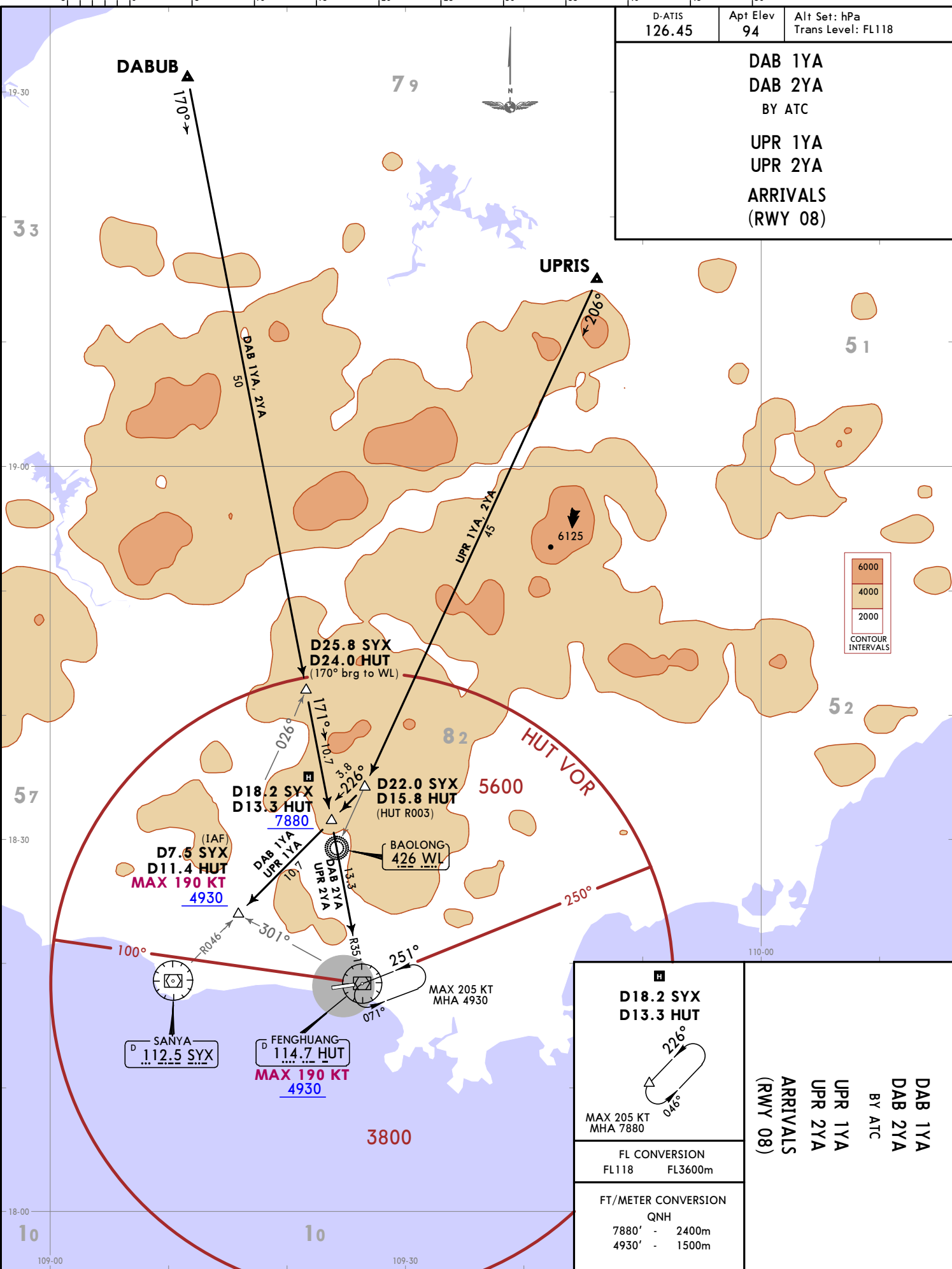
FL CONVERSION	
FL118	FL3600m
FT/METER CONVERSION	
QNH	
5910'	1800m
4930'	1500m
3940'	1200m

STAR	ROUTING
KAG 7ZA	KAGUK - AGEGI - SY508 (5910+) - SY468 (K220-; 4930+).
KAG 8ZA By ATC	KAGUK - AGEGI - SY508 (5910+) - SY468 (4930+) - SY501 (K220-; 3940+).
KAG 9ZA	KAGUK - AGEGI - SYX (4930+) - SY507 (K220-; 4930+).

CHANGES: STARS revised: MSA.

ZJSY/SYX
PHOENIX

D-ATIS 126.45	Apt Elev 94	Alt Set: hPa Trans Level: FL118
DAB 1YA DAB 2YA BY ATC UPR 1YA UPR 2YA ARRIVALS (RWY 08)		

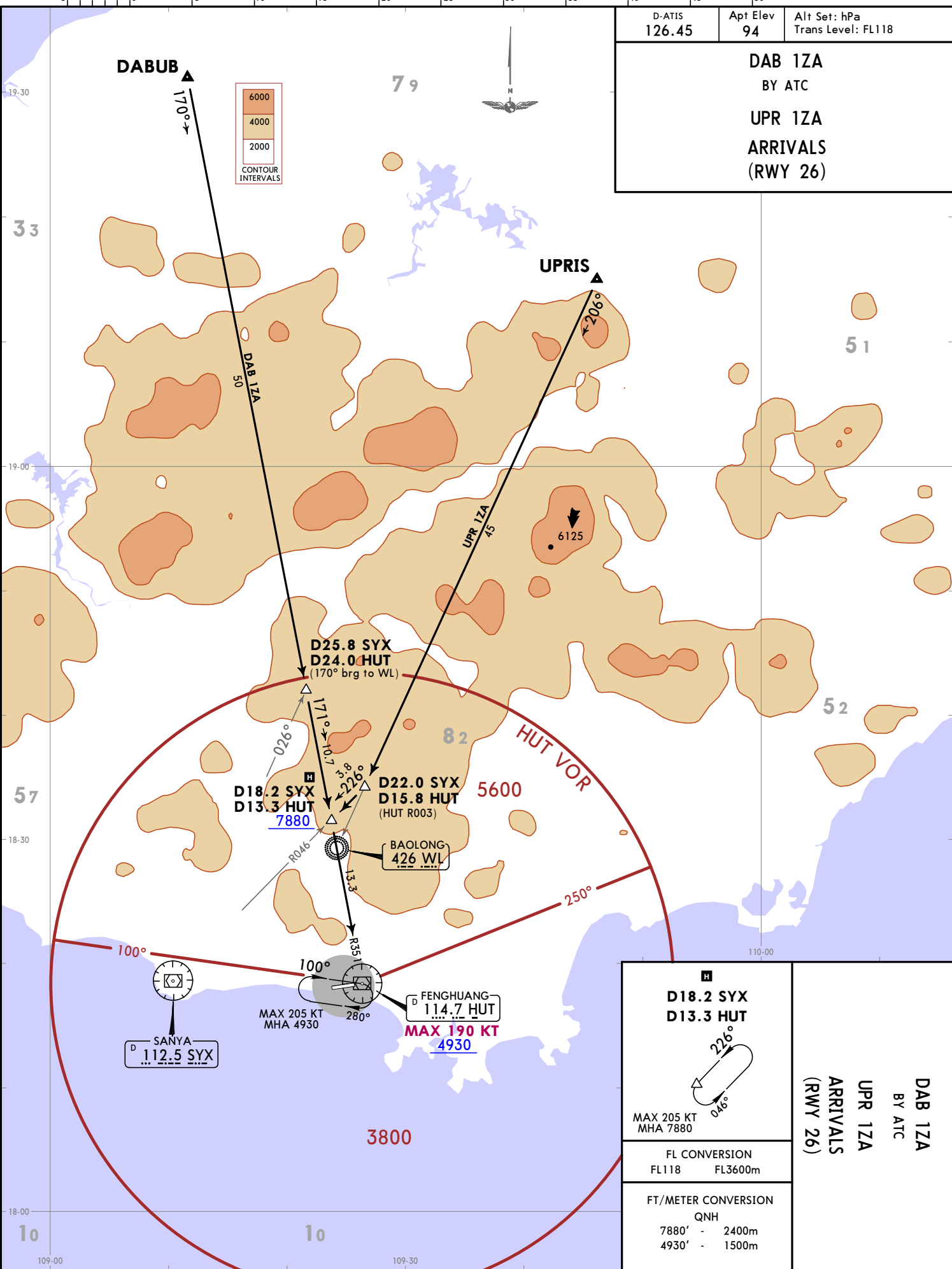


19 JAN 24 10-2D Eff 24 Jan 1600Z
JEPPESEN SANYA, PR OF CHINA
 STAR

© JEPPESEN, 2024. ALL RIGHTS RESERVED.

CHANGES: STARS DAB & UPR 1ZA revised; DAB & UPR 2ZA withdrawn; MSA.

© JEPPESEN, 2024. ALL RIGHTS RESERVED.



D-ATIS 126.45	Apt Elev 94	Alt Set: hPa Trans Level: FL118
DAB 1ZA BY ATC UPR 1ZA ARRIVALS (RWY 26)		

<p>H</p> <p>D18.2 SYX D13.3 HUT</p> <p>MAX 205 KT MHA 7880</p> <p>FL CONVERSION FL118 FL3600m</p> <p>FT/METER CONVERSION QNH 7880' - 2400m 4930' - 1500m</p>	<p>DAB 1ZA BY ATC UPR 1ZA ARRIVALS (RWY 26)</p>
--	---

ZJSY/SYX
PHOENIX
JEPPESEN
 19 JAN 24 10-2E
 EFF 24 Jan 1600Z
SANYA, PR OF CHINA
STAR

ZJSY/SYX
PHOENIX

JEPPESSEN

SANYA, PR OF CHINA

19 JAN 24

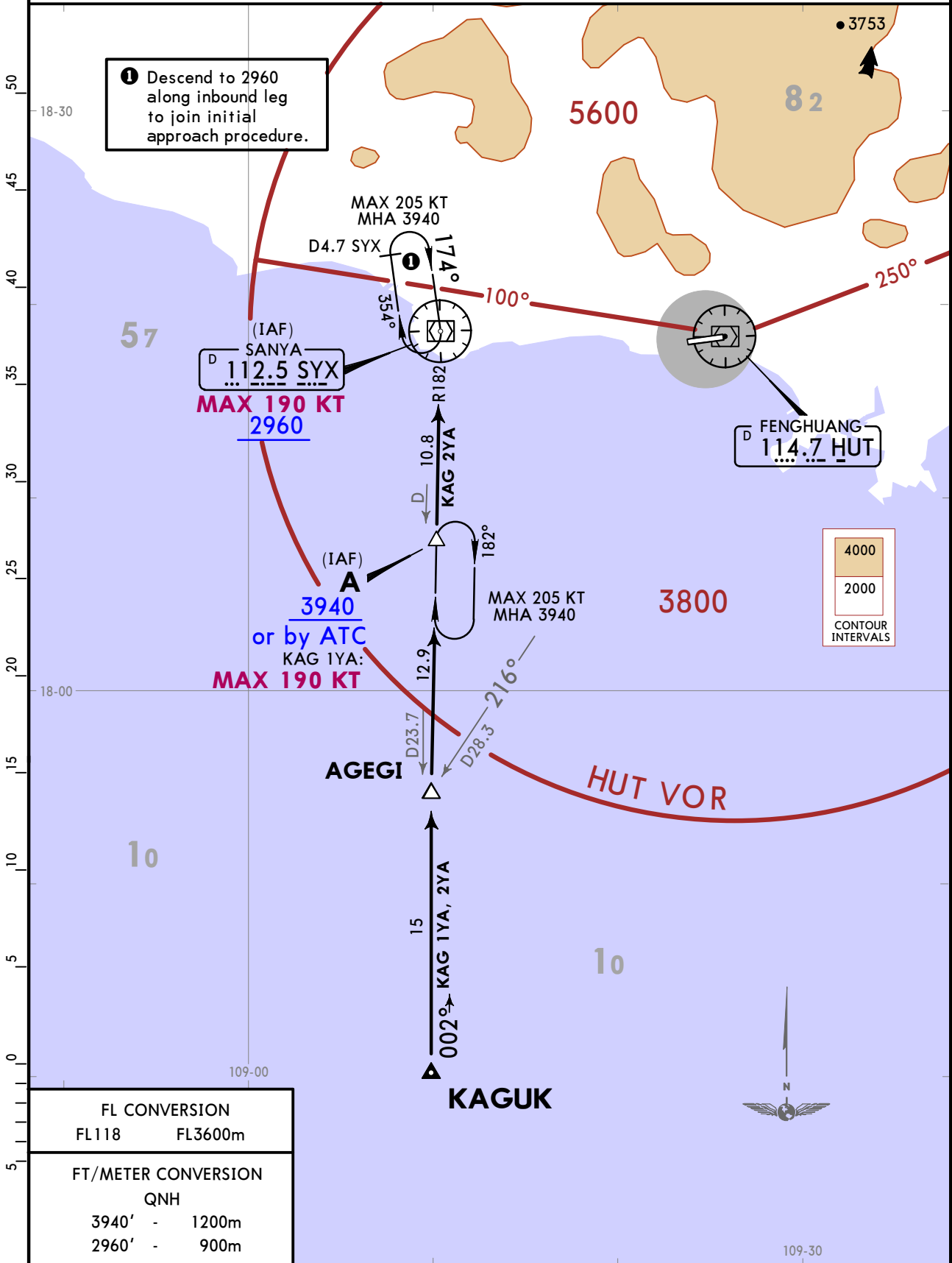
10-2F

Eff 24 Jan 1600Z

STAR

D-ATIS 126.45	Apt Elev 94	Alt Set: hPa Trans Level: FL118
------------------	----------------	------------------------------------

KAG 1YA
KAG 2YA
ARRIVALS
(RWY 08)



1 Descend to 2960 along inbound leg to join initial approach procedure.

FL CONVERSION	
FL118	FL3600m
FT/METER CONVERSION	
QNH	
3940'	1200m
2960'	900m

ZJSY/SYX
PHOENIX

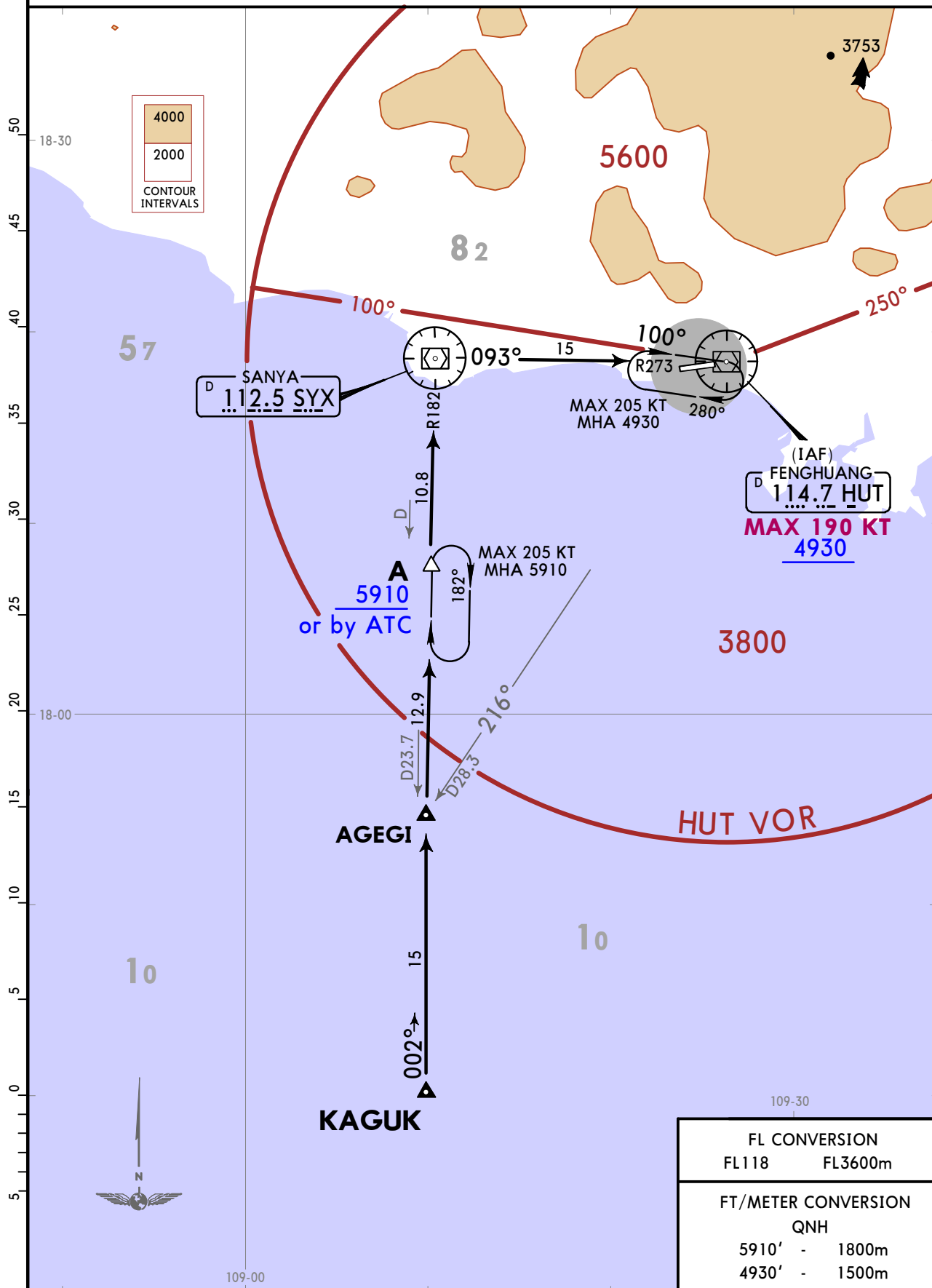
JEPPESEN
19 JAN 24 10-2G Eff 24 Jan 1600Z

SANYA, PR OF CHINA

STAR

D-ATIS 126.45
Apt Elev 94
Alt Set: hPa
Trans Level: FL118

KAG 1ZA
ARRIVAL
(RWY 26)



ZJSY/SYX
PHOENIX

JEPPESEN

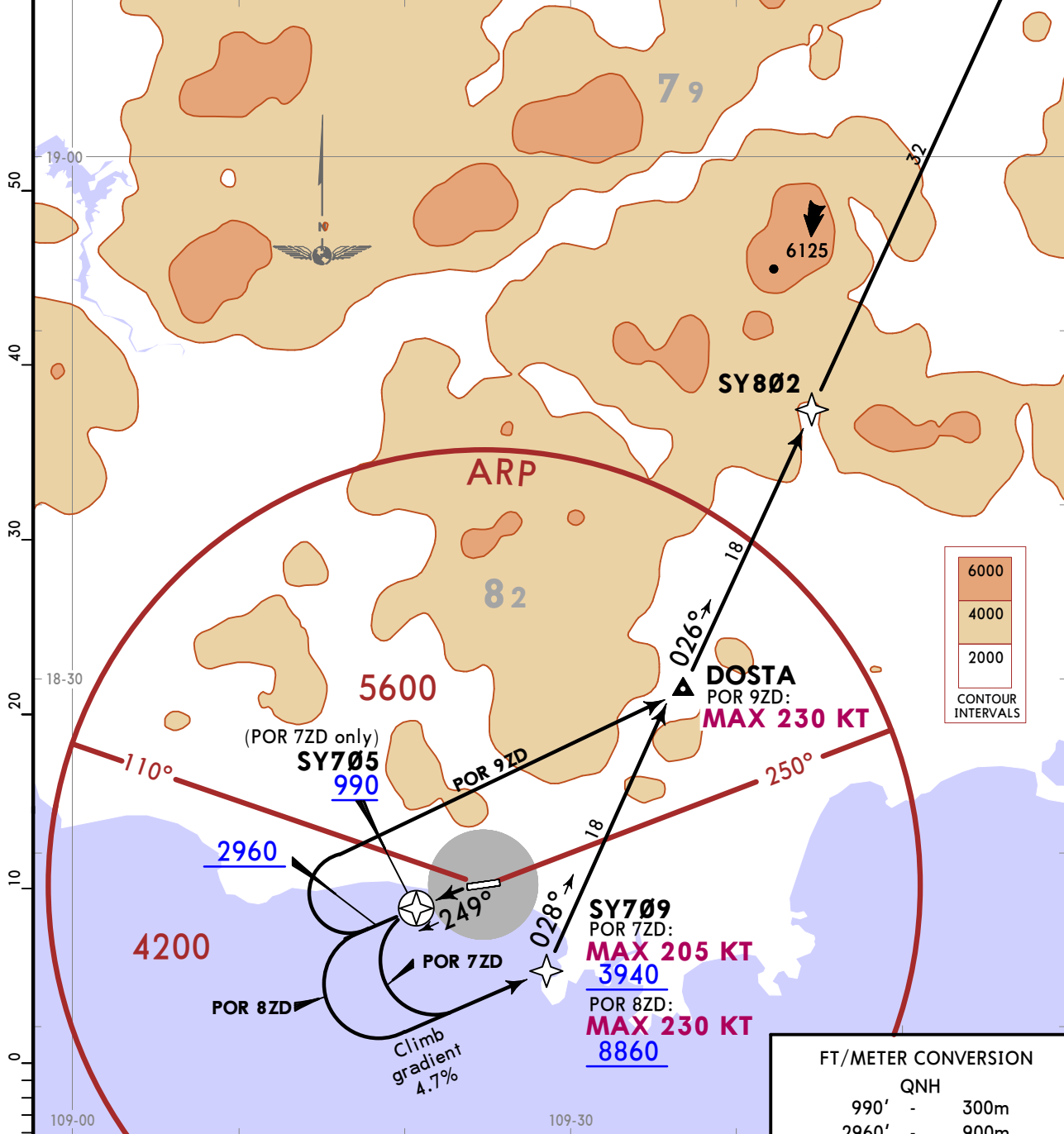
SANYA, PR OF CHINA

17 MAY 24 (10-3A)

RNAV SID

Apt Elev 94	Trans Alt: 9850 10830 1031 hPa or above 8860 979 hPa or below		1. RADAR required for RNAV 1. 2. Turning before DER prohibited. 3. Speed limit can be canceled after initial turn. 4. Apply noise abatement procedures during climb.
	RNAV 1 GNSS	or RNP1 GNSS	

**POR 7ZD, POR 8ZD, POR 9ZD
RNAV DEPARTURES
(RWY 26)**



These SIDs require a minimum climb gradient of 5.1% up to 990.

Gnd speed-KT	75	100	150	200	250	300
4.7% V/V (fpm)	357	476	714	952	1190	1428
5.1% V/V (fpm)	387	516	775	1033	1291	1549

FT/METER CONVERSION	
QNH	
990'	300m
2960'	900m
3940'	1200m
8860'	2700m
9850'	3000m
10830'	3300m

SID	ROUTING
POR 7ZD	SY705 (990+) - SY709 (K205-; 3940+) - DOSTA - SY802 - PORAP.
POR 8ZD	(2960+) - SY709 (K230-; 8860+) - DOSTA - SY802 - PORAP.
POR 9ZD	(2960+) - DOSTA (K230-) - SY802 - PORAP.

ZJSY/SYX
PHOENIX

JEPPESEN

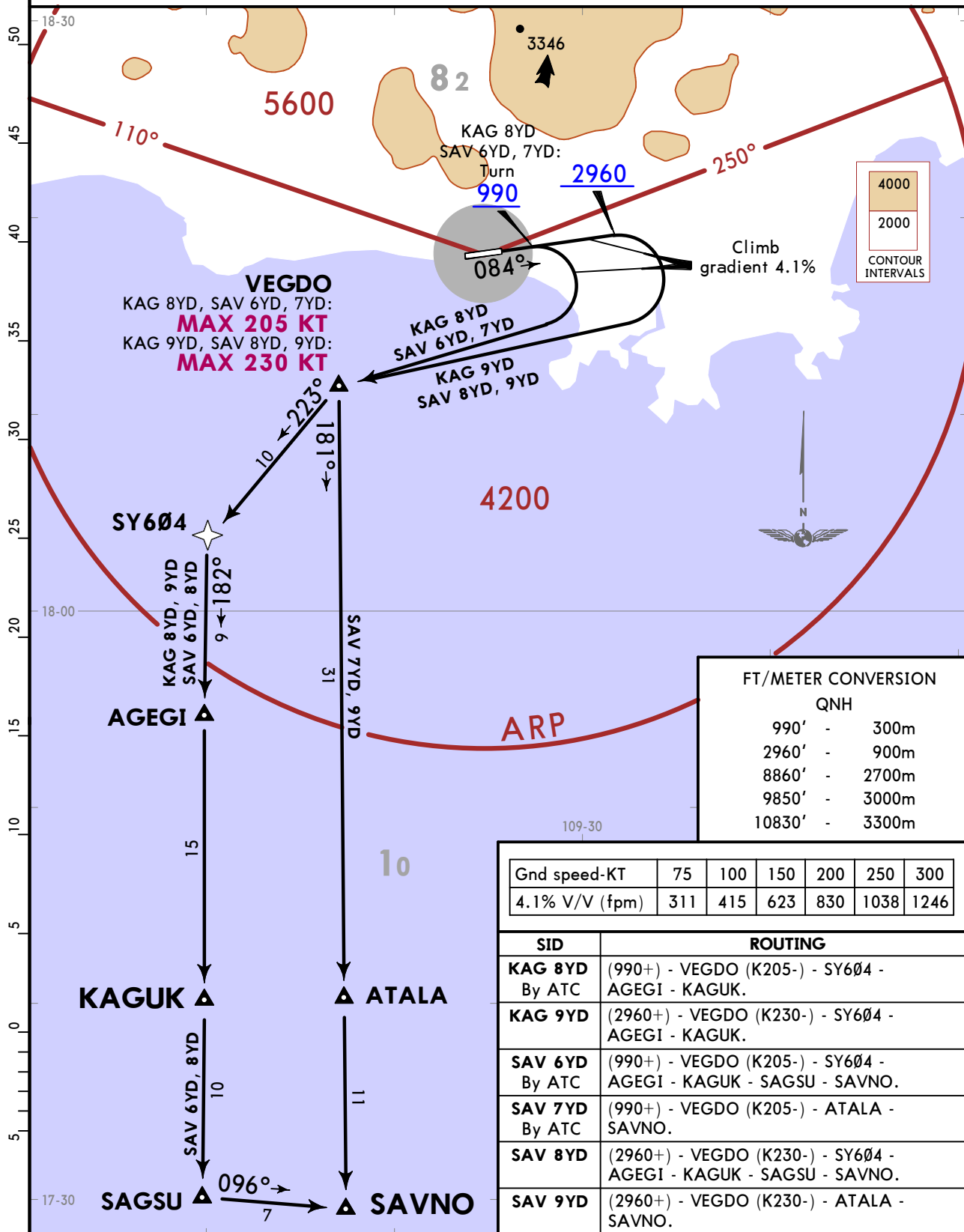
SANYA, PR OF CHINA

17 MAY 24 (10-3B)

RNAV SID

Apt Elev 94	Trans Alt: 9850 10830 1031 hPa or above 8860 979 hPa or below		1. RADAR required for RNAV 1. 2. Turning before DER prohibited. 3. Speed limit can be canceled after initial turn. 4. Apply noise abatement procedures during climb.
	RNAV 1 GNSS	or RNP1 GNSS	

**KAG 8YD, KAG 9YD
SAV 6YD, SAV 7YD, SAV 8YD, SAV 9YD
RNAV DEPARTURES (RWY 08)**



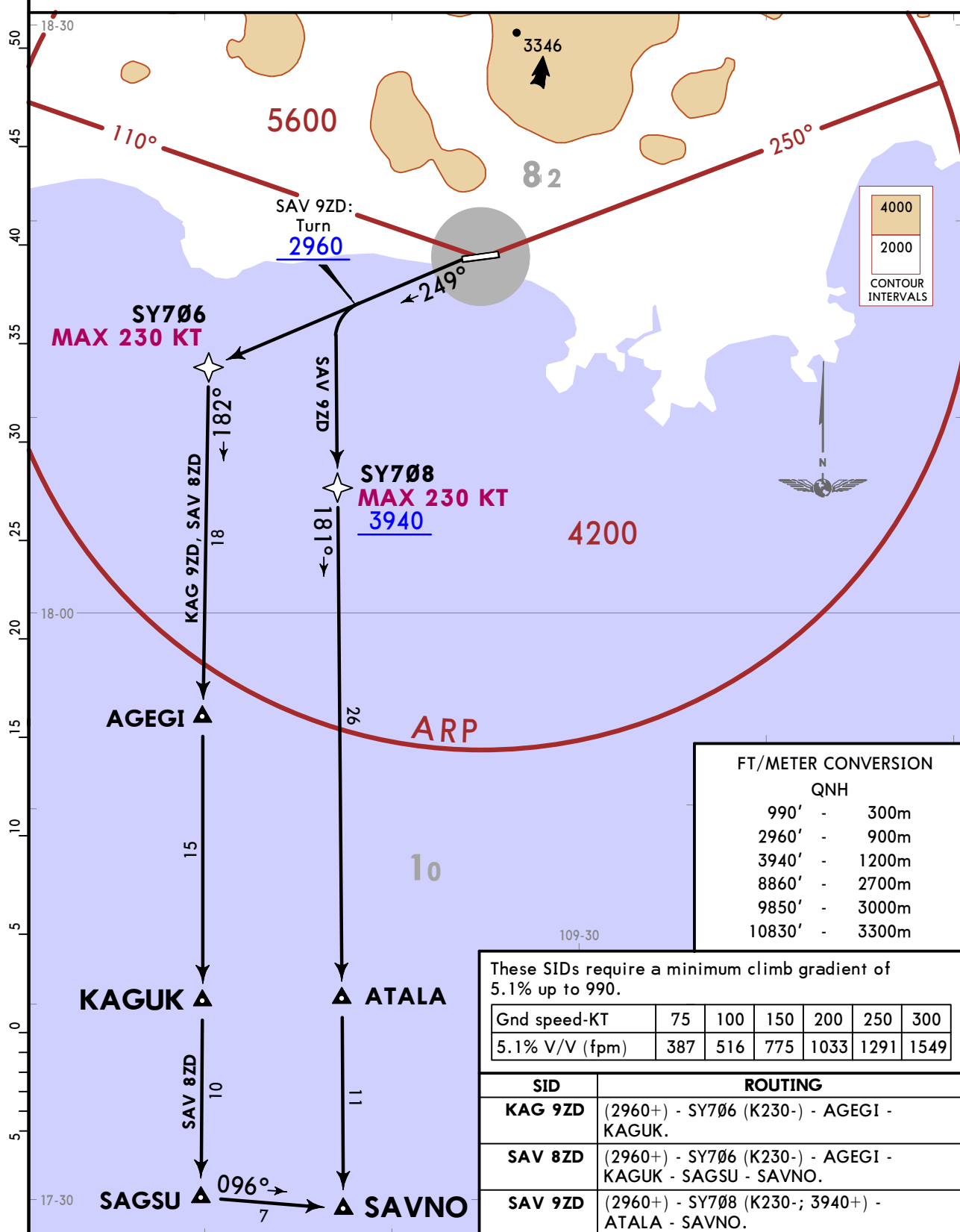
ZJSY/SYX
PHOENIX

JEPPESEN
17 MAY 24 (10-3C)

SANYA, PR OF CHINA
RNAV SID

Apt Elev 94	Trans Alt: 9850 10830 1031 hPa or above 8860 979 hPa or below		1. RADAR required for RNAV 1. 2. Turning before DER prohibited. 3. Speed limit can be canceled after initial turn. 4. Apply noise abatement procedures during climb.
	RNAV 1 GNSS	or RNP1 GNSS	

**KAG 9ZD, SAV 8ZD, SAV 9ZD
RNAV DEPARTURES
(RWY 26)**



FT/METER CONVERSION

QNH	
990'	300m
2960'	900m
3940'	1200m
8860'	2700m
9850'	3000m
10830'	3300m

These SIDs require a minimum climb gradient of 5.1% up to 990.

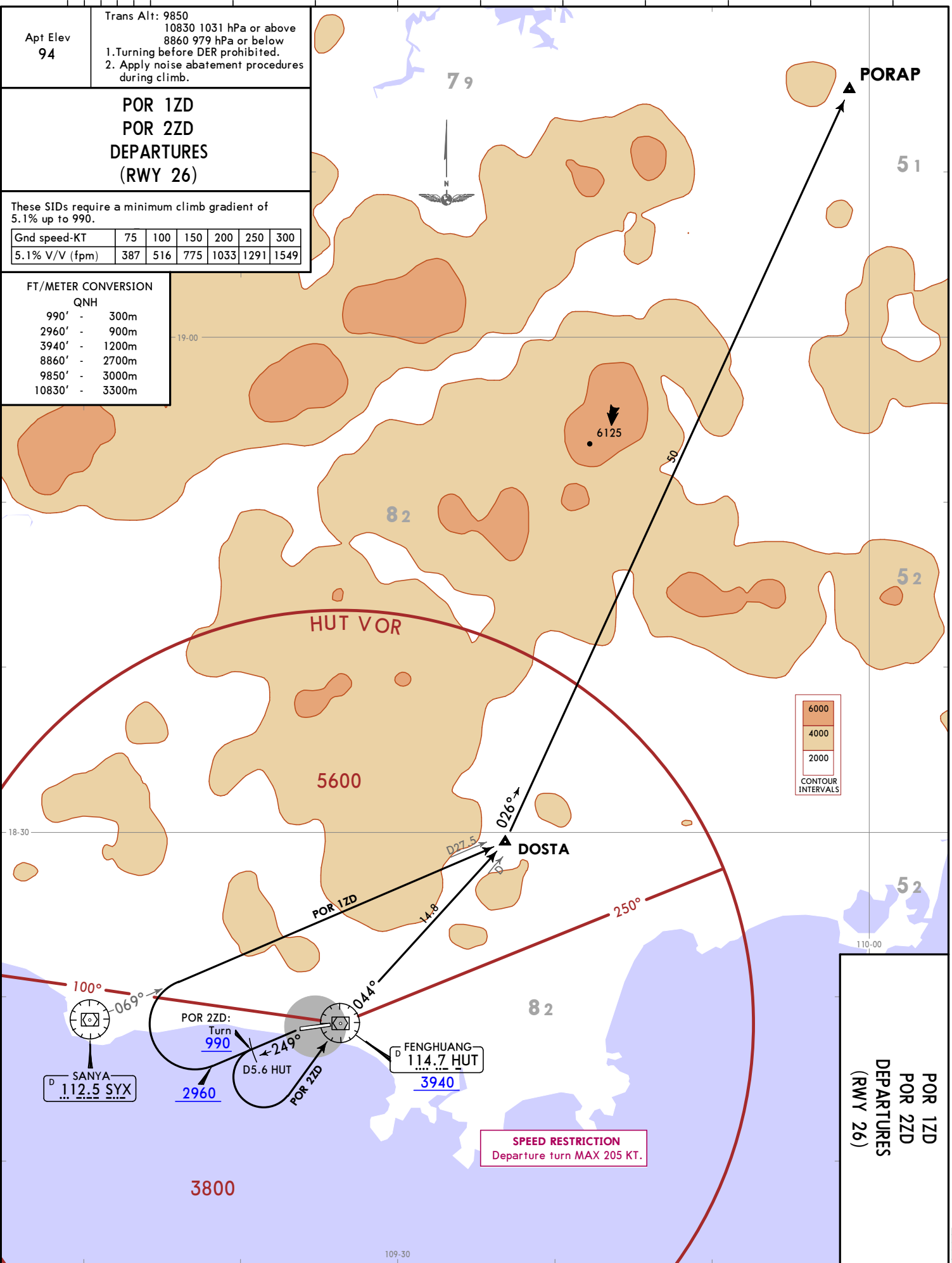
Gnd speed-KT	75	100	150	200	250	300
5.1% V/V (fpm)	387	516	775	1033	1291	1549

SID	ROUTING
KAG 9ZD	(2960+) - SY706 (K230-) - AGEGI - KAGUK.
SAV 8ZD	(2960+) - SY706 (K230-) - AGEGI - KAGUK - SAGSU - SAVNO.
SAV 9ZD	(2960+) - SY708 (K230-; 3940+) - ATALA - SAVNO.

CHANGES: Climb gradient established.

Apt Elev 94	Trans Alt: 9850					
	10830 1031 hPa or above 8860 979 hPa or below					
1. Turning before DER prohibited. 2. Apply noise abatement procedures during climb.						
POR 1ZD POR 2ZD DEPARTURES (RWY 26)						
These SID's require a minimum climb gradient of 5.1% up to 990.						
Gnd speed-KT	75	100	150	200	250	300
5.1% V/V (fpm)	387	516	775	1033	1291	1549

FT/METER CONVERSION	
QNH	
990'	- 300m
2960'	- 900m
3940'	- 1200m
8860'	- 2700m
9850'	- 3000m
10830'	- 3300m



**POR 1ZD
POR 2ZD
DEPARTURES
(RWY 26)**

ZJSY/SYX
 PHOENIX
 2 FEB 24 10-3E
 JEPPESEN
 SANYA, PR OF CHINA
 SID

© JEPPESEN, 2020, 2024. ALL RIGHTS RESERVED.

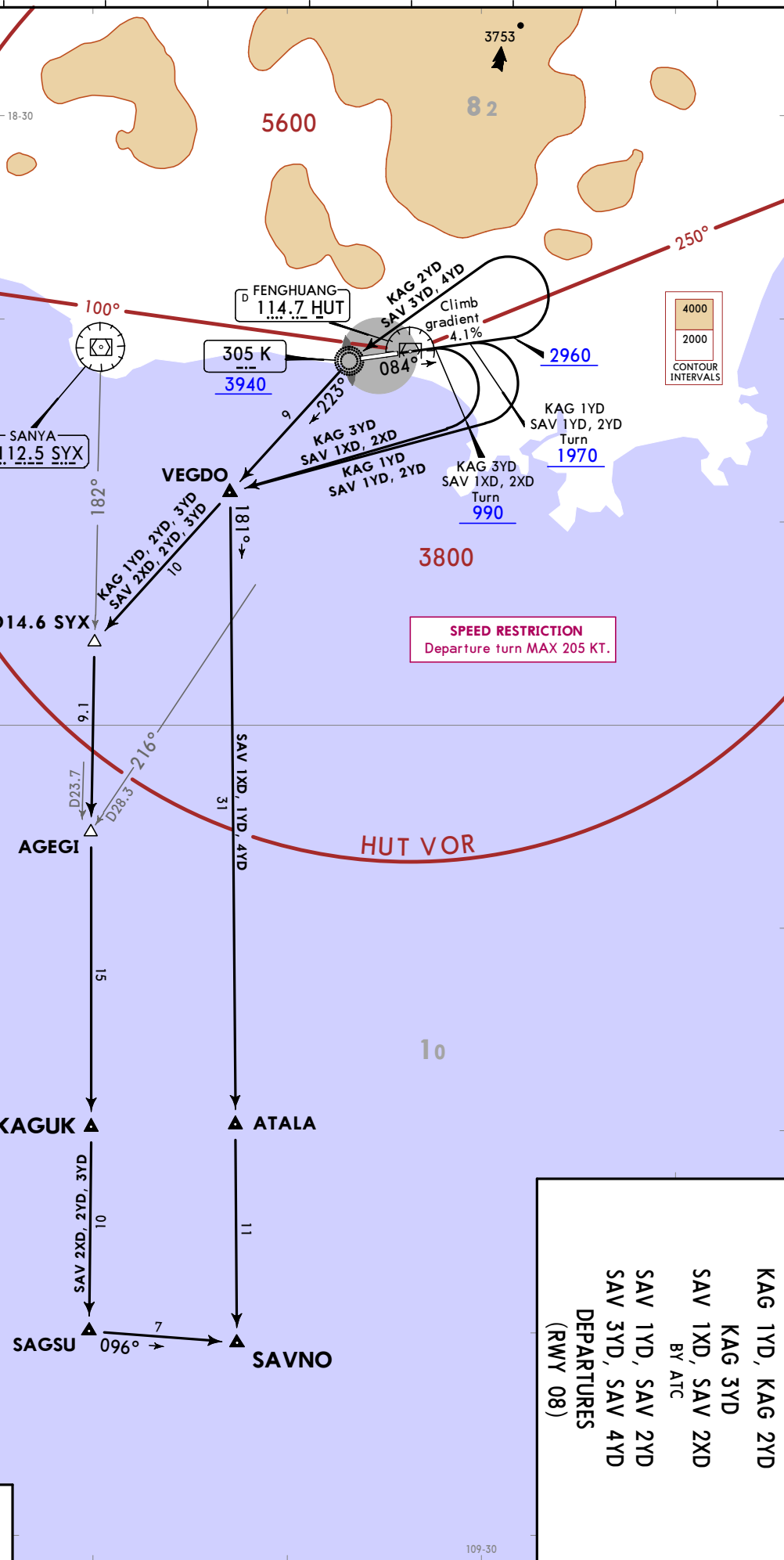
ZJSY/SYX
PHOENIX

CHANGES: None.

Trans Alt: 9850
10830 1031 hPa or above
8860 979 hPa or below
1. Turning before DER prohibited.
2. Apply noise abatement procedures during climb.

Apt Elev
94

KAG 1YD, KAG 2YD
KAG 3YD
SAV 1XD, SAV 2XD
BY ATC
SAV 1YD, SAV 2YD
SAV 3YD, SAV 4YD
DEPARTURES
(RWY 08)



FT/METER CONVERSION

QNH	
990'	300m
1970'	600m
2960'	900m
3940'	1200m
8860'	2700m
9850'	3000m
10830'	3300m

Gnd speed-KT	75	100	150	200	250	300
4.1% V/V (fpm)	311	415	623	830	1038	1246

KAG 1YD, KAG 2YD
KAG 3YD
SAV 1XD, SAV 2XD
BY ATC
SAV 1YD, SAV 2YD
SAV 3YD, SAV 4YD
DEPARTURES
(RWY 08)

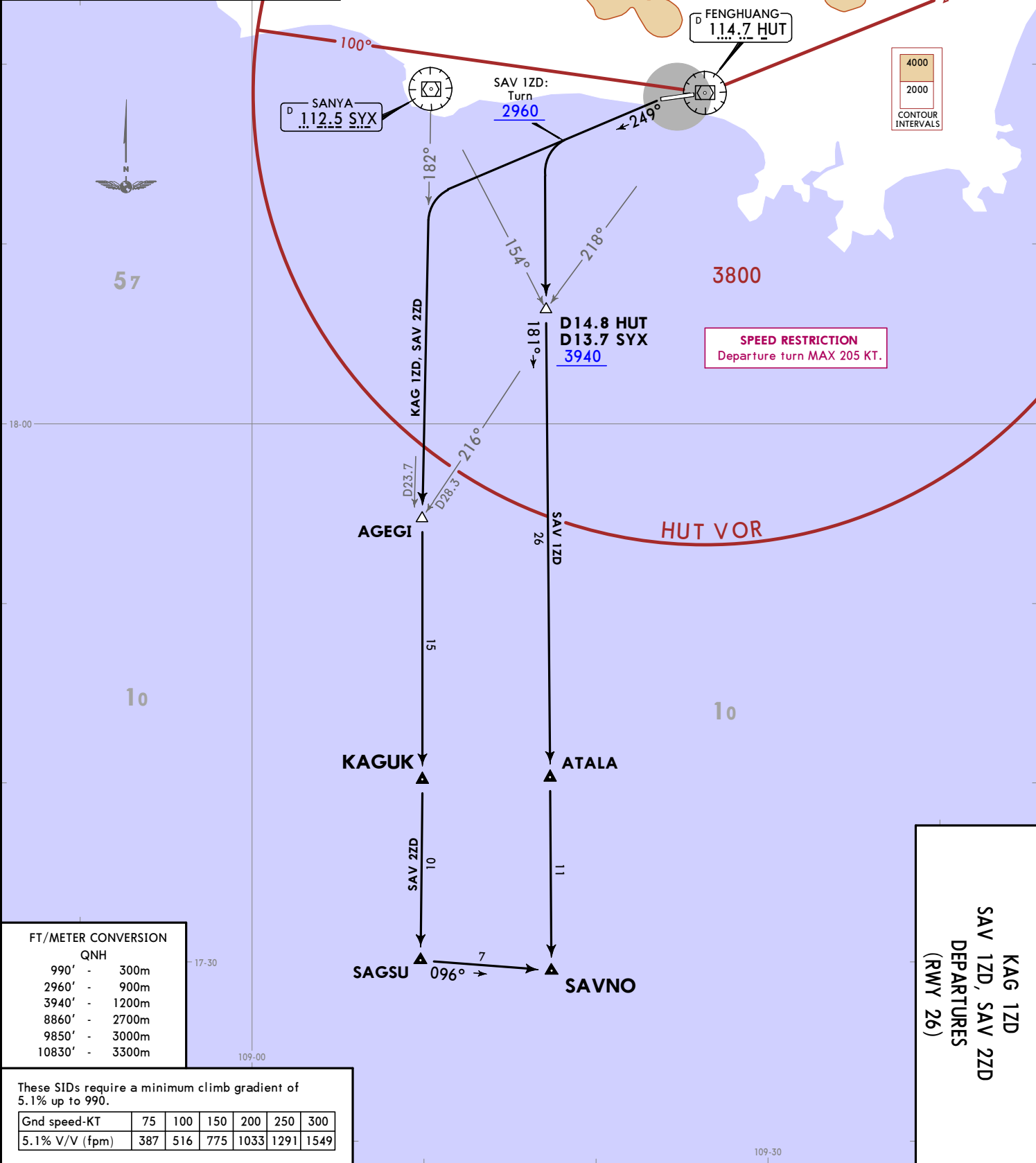
JEPPESSEN SANYA, PR OF CHINA
2 FEB 24 10-3F
SID

CHANGES: Climb gradient established.

Apt Elev
94

Trans Alt: 9850
10830 1031 hPa or above
8860 979 hPa or below
1. Turning before DER prohibited.
2. Apply noise abatement procedures during climb.

**KAG 1ZD
SAV 1ZD, SAV 2ZD
DEPARTURES
(RWY 26)**



FT/METER CONVERSION

QNH

990'	-	300m
2960'	-	900m
3940'	-	1200m
8860'	-	2700m
9850'	-	3000m
10830'	-	3300m

These SID's require a minimum climb gradient of 5.1% up to 990.

Gnd speed-KT	75	100	150	200	250	300
5.1% V/V (fpm)	387	516	775	1033	1291	1549

ZJSY/SYX
PHOENIX

2 FEB 24 (10-3G)

JEPPÉSEN

SANYA, PR OF CHINA
SID

ZJSY/SYX

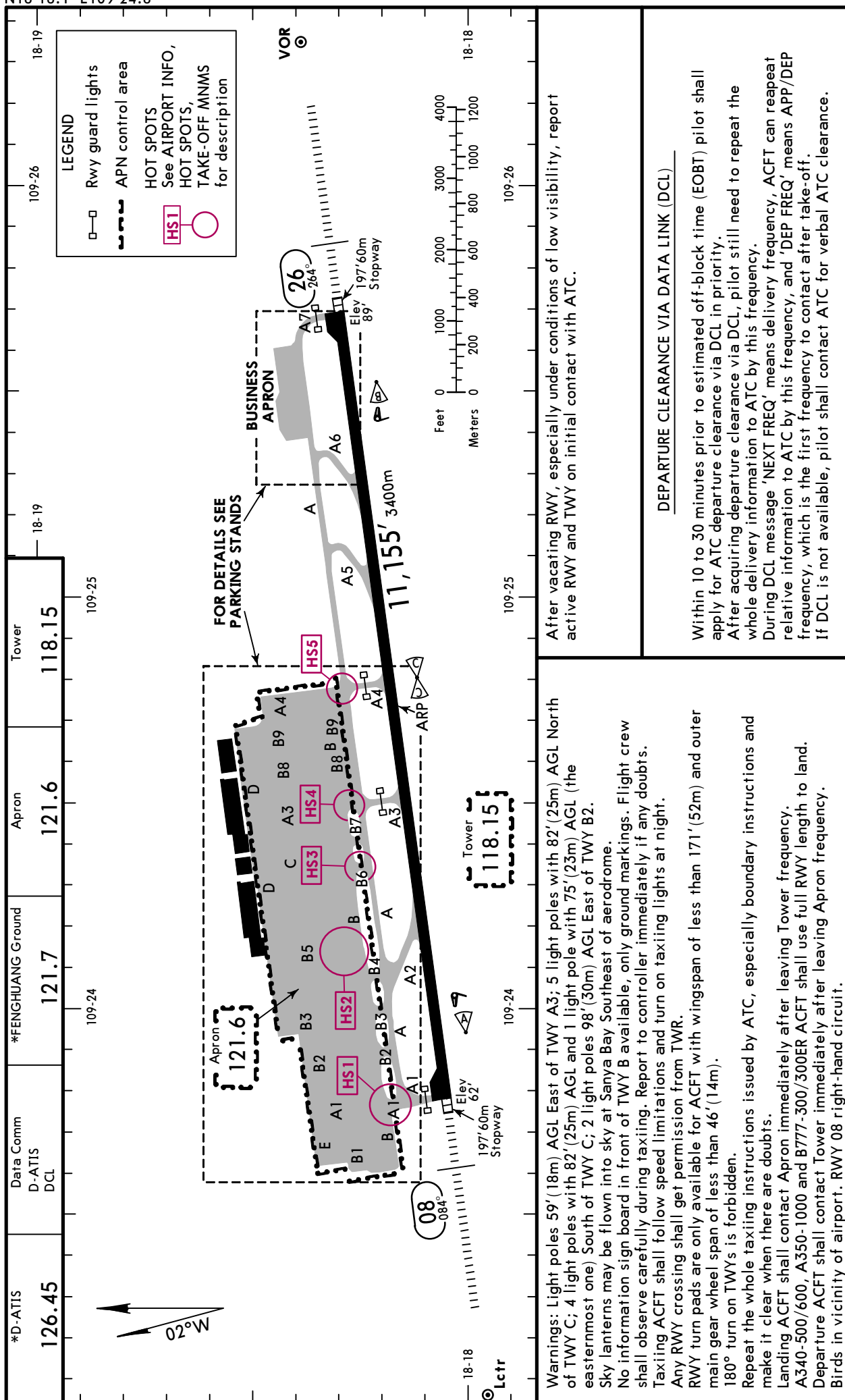
Apt Elev **94'**
N18 18.1 E109 24.8

JEPPesen

3 MAY 24 **(10-9)** Eff 15 May 1600Z

SANYA, PR OF CHINA

PHOENIX



CHANGES: Warnings, TWYs.

© JEPPesen, 1999, 2024. ALL RIGHTS RESERVED.

ZJSY/SYX

JEPPesen
3 MAY 24 **10-9A** Eff 15 May 1600Z

SANYA, PR OF CHINA

PHOENIX

RWY	ADDITIONAL RUNWAY INFORMATION						USABLE LENGTHS		TAKE-OFF	WIDTH	
	LANDING BEYOND						Threshold	Glide Slope			
08	HIRL (60m)	CL(30m)	① HIALS	SFL	②	③	RVR		10,200' 3109m		148'
26	HIRL (60m)	CL(30m)	④ HIALS	SFL	②	⑤	RVR		10,204' 3110m		45m

- ① length 900m
- ② PAPI-L(3.0°)
- ③ HST-A5 & A6.
- ④ length 888m
- ⑤ HST-A2.

HOT SPOT PROCEDURES

(For information only, not to be construed as ATC instructions.)

For the purpose of reducing errors that lead to ground conflicts and runway incursions, ACFT operating within the maneuvering area must follow the requirement below:

- HS1** Intersections between TWY A, TWY B and TWY A1:
When RWY 08 is in operation, ACFT taxiing out of this area will have conflict with ACFT taxiing in. If ACFT are approaching each other, the ACFT only can be towed by towing vehicle. Flight crew shall observe in advance before taxiing into TWY B2. If have any conflict, stop immediately and inform ATC.
- HS2** Intersections between TWY C, TWY B and TWY B5:
This is an intersection of multi-taxiways, flight crew shall observe in advance when taxiing into this area. If have any conflicts, report to ATC immediately.
- HS3** Intersections between TWY B6, TWY A and TWY B:
When RWY 08 is in operation, ACFT taxiing out of this area will have conflict with ACFT taxiing in. Flight crew shall observe in advance before taxiing into TWY B7. If have any conflict, stop immediately and inform ATC.
- HS4** Intersections between TWY A3, TWY A and TWY B:
This is an intersection of multi-taxiways, and any RWY to be used will have taxiing conflict. When ACFT is approaching intersection through TWY A3, A and B, advanced observation is required to avoid conflicts. Due to TWY A and B are close to each other, flight crew shall pay more attention to the taxi routes in these areas. If any doubt or confused, report to ATC immediately.
- HS5** Intersections between TWY A and TWY A4:
When RWY 26 is in operation, if ACFT taxiing out of TWY A4 is approaching this intersection area, flight crew shall observe in advance before taxiing into TWY A, in order to avoid any conflict with ACFT on TWY A.

State		TAKE-OFF (with reliable alternate)			
		RWY 08		RWY 26	
				CEILING REQUIRED	
		RL	NIL (DAY only)	RL	NIL (DAY only)
2 TURB Eng or 3 & 4 Eng	A	R400m V800m	R500m V800m	300m - V5000m	
	B				
	C				
	D				
Other 1 & 2 Eng		R/V1600m		Minimums not established by CAAC	

ZJSY/SYX

JEPPesen

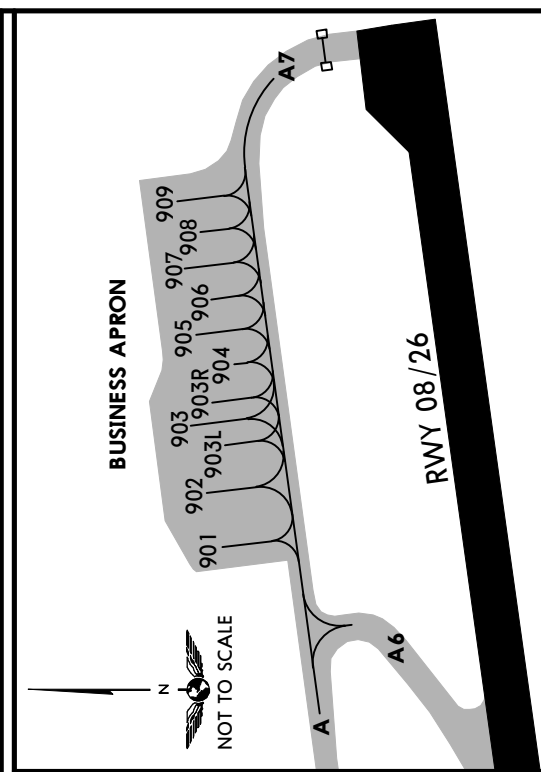
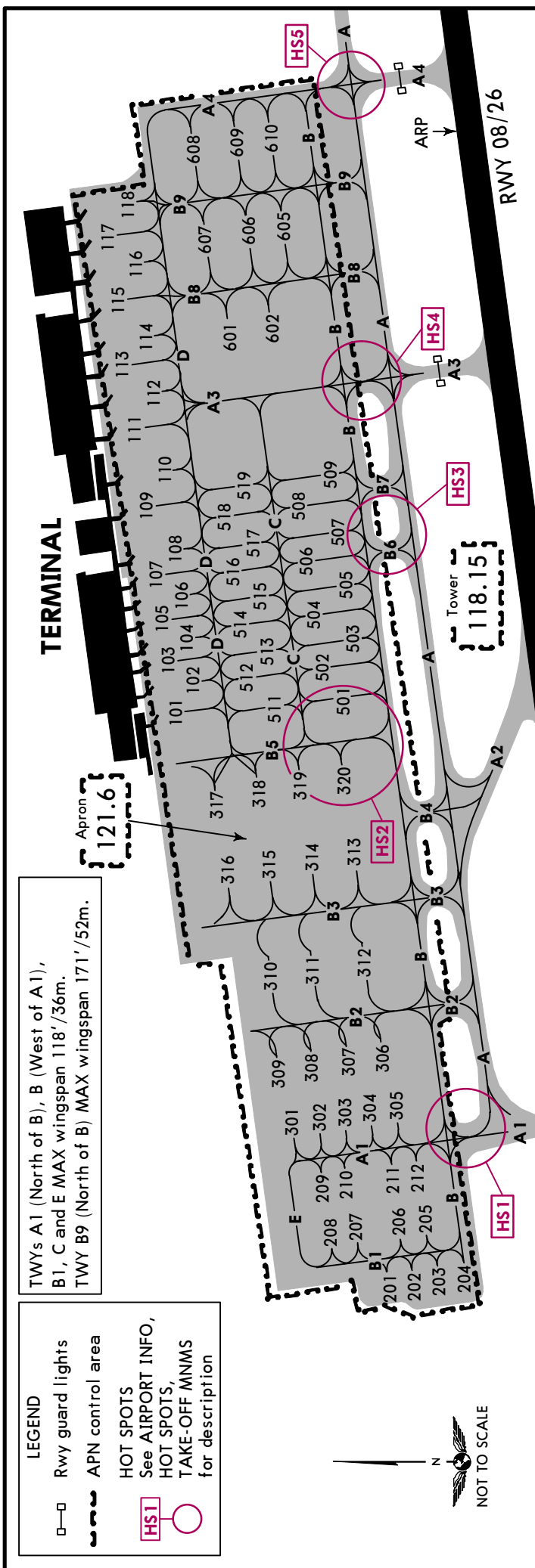
SANYA, PR OF CHINA

3 MAY 24

10-9B

Eff 15 May 1600Z

PHOENIX



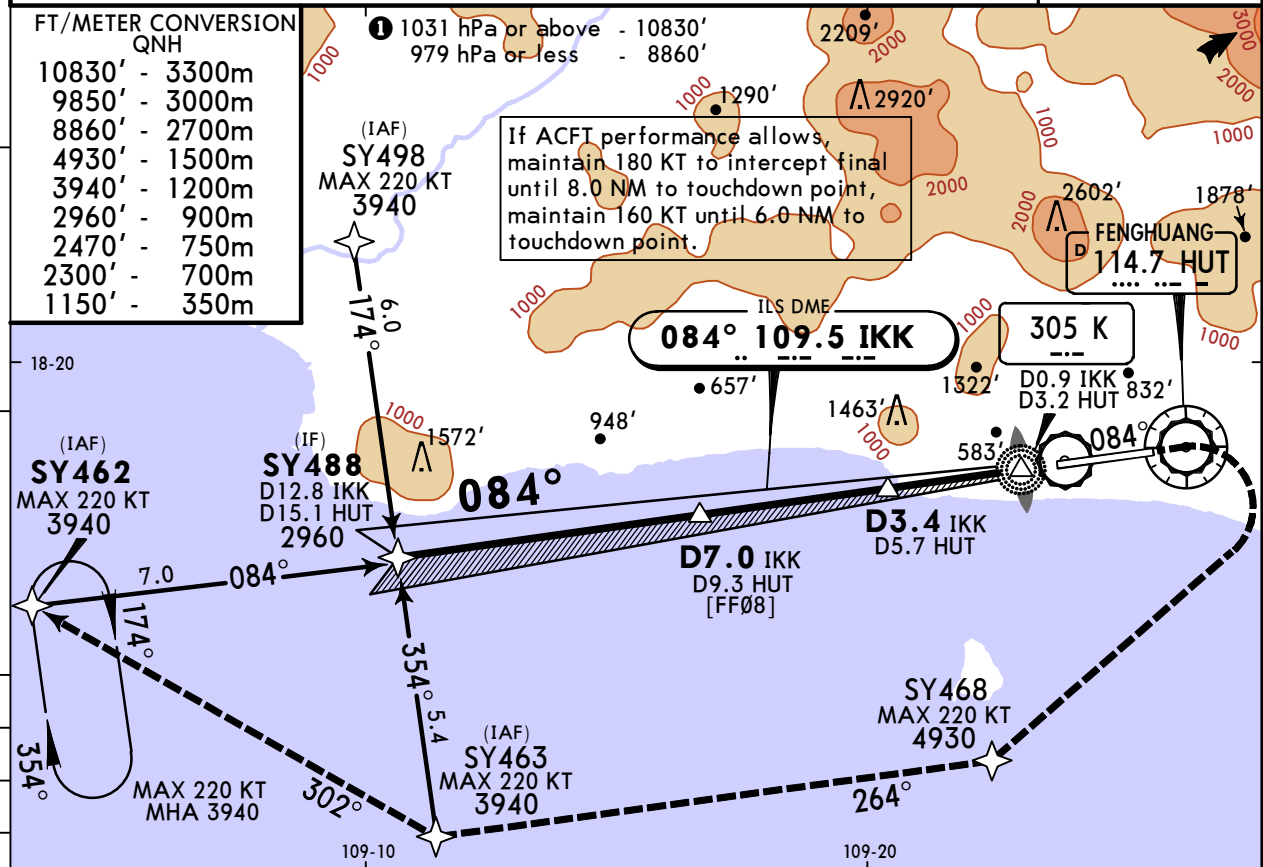
While pushed back from parking stand, contact ATC to verify active RWY.
Taxiing on its own power or pushed-back by tow truck is strictly forbidden without ATC clearance.
Engine run-ups are subject to ATC clearance. During flight operation period, fast engine run-up is strictly forbidden in the vicinity of boarding bridges and on apron or TWYs.
Parking on stands 201 thru 204, 209 thru 212, 306 thru 312, 317 thru 320, 601, 602 and 608 thru 610 nose to West.
Parking on stands 205 thru 208, 301 thru 305, 313 thru 316 and 605 thru 607 nose to East.
Parking on stands 501 thru 509 nose to South.
Parking on stands 101 thru 118, 511 thru 519 and 901 thru 909, 903L and 903R nose to North.
ACFT parking on stands 101 thru 118, 201 thru 212, 301 thru 309, 313 thru 320, 601, 602, 901 thru 909, 903L and 903R could taxi in and out by itself after AOC clearance or shall taxi in and be pushed back.
ACFT parking on stands 101 thru 118 should close APU and use 400 Hz power unit and air condition system.
Departure ACFT in the APN Control Area shall contact TWR to receive delivery clearance, then contact APN by TWR instructions.
Departure ACFT shall be ready to pushed-back and start-up, then contact APN and report the parking stand number and destination.
APN issues information such as push-back, start-up clearance and taxiing routes.
ACFT shall contact TWR before entering into TWR Control area, then continue taxiing with TWR instructions.

ZJSY/SYX PHOENIX

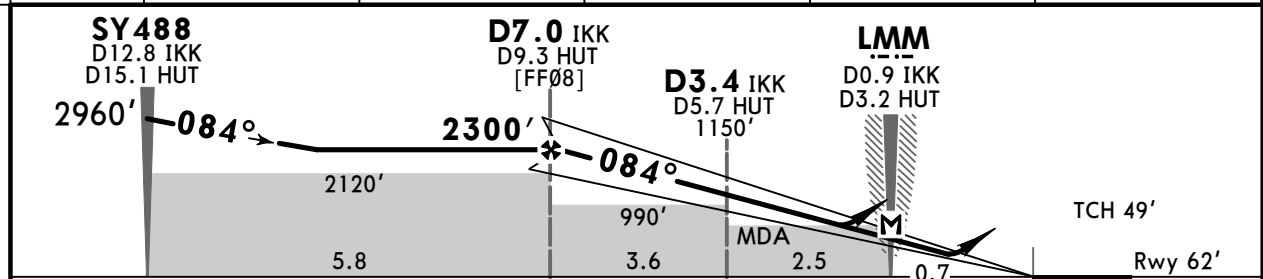
19 JAN 24
Eff 24 Jan 1600Z (11-1)

SANYA, PR OF CHINA RNAV ILS DME Z Rwy 08

*D-ATIS 126.45	SANYA Approach (R) APP01 127.925 (By ATC)	APP02 125.55	FENGHUANG Tower 118.15	*Ground 121.7
LOC IKK 109.5	Final Apch Crs 084°	D7.0 IKK 2300' (2238')	ILS DA(H) Refer to Minimums	Apt Elev 94' Rwy 62'
MISSED APCH: Climb STRAIGHT AHEAD to 2470', turn RIGHT and climb to 4930', fly to SY462 via SY468 and SY463, join holding or by ATC. Turning is forbidden before MAP. Refer to minimums for missed apch climb gradient.				
Alt Set: hPa		Rwy Elev: 2 hPa	Trans level: FL118	Trans alt: 9850' 1



LOC (GS out)	IKK DME	6.0	5.0	4.0	3.0
	ALTITUDE	1980'	1660'	1340'	1020'



Gnd speed-Kts	70	90	100	120	140	160	HIALS 	2470'	4930'			
ILS GS or LOC Descent Angle	3.00°	372	478	531	637	743				849		↑
MAP at LMM/D0.9 IKK/D3.2 HUT												

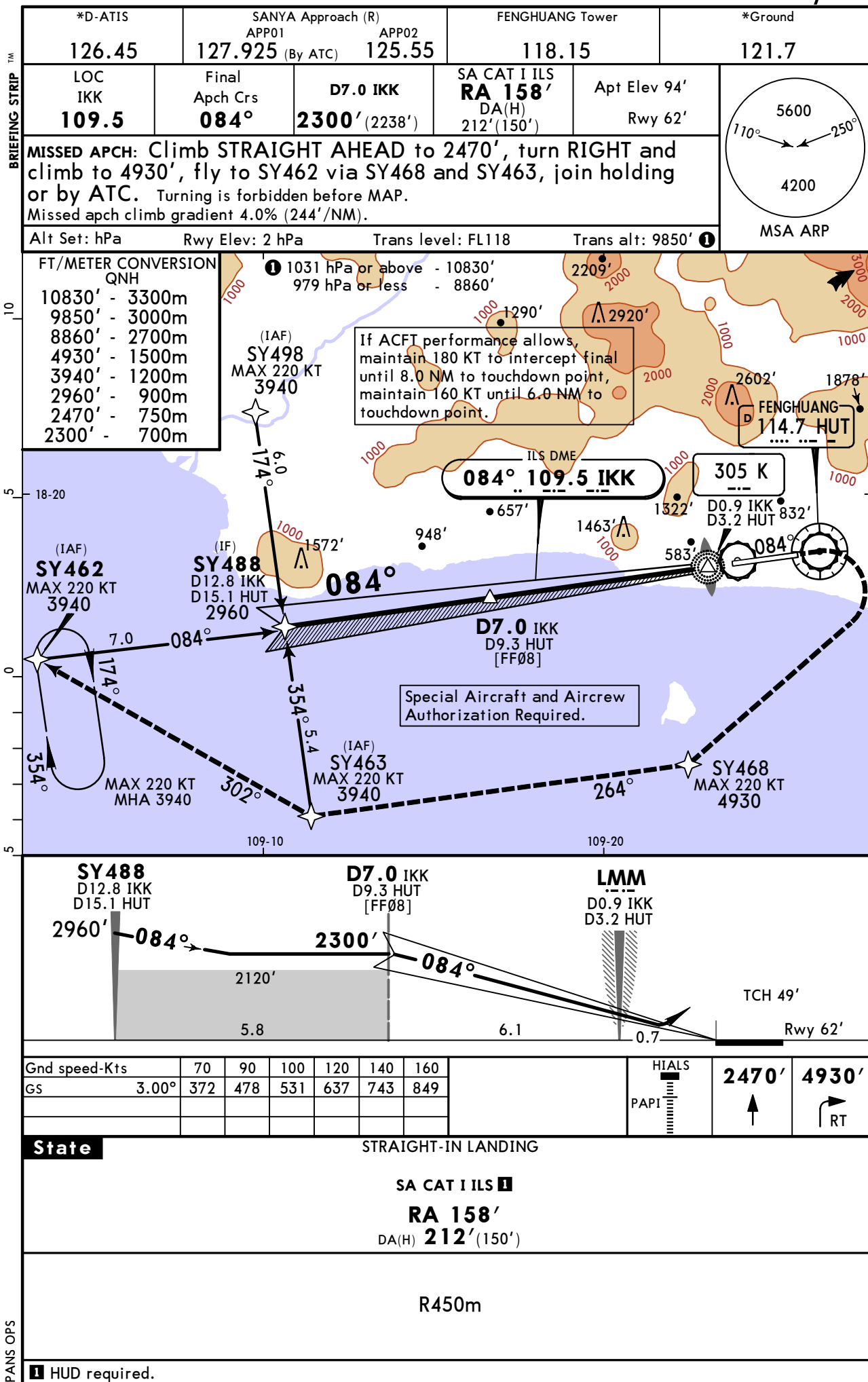
State		STRAIGHT-IN LANDING				LOC (GS out)		CIRCLE-TO-LAND	
Missed apch climb grad 4.0% (244'/NM)		Missed apch climb grad 2.5% (152'/NM)		CDFA		DAY only. South of RWY only.			
DA(H) 262' (200')		DA(H) AB: 407' (345') CD: 423' (361')		MDA(H) 760' (698')					
ALS out		ALS out		ALS out		Max Kts		MDA(H)	
A						100			
B	1 R550m	V1200m	R/V	V2100m	V3200m	V4100m	135	1630' (1536') V5000m	
C	V800m		1200m				180		
D							205		

1 R800m when a Flight Director or Autopilot or HUD to DA is not used.
CHANGES: ATIS operation, MSA, procedure, speed note, minimums. © JEPPESEN, 2015, 2024. ALL RIGHTS RESERVED.

ZJSY/SYX
PHOENIX

JEPPESSEN
19 JAN 24 **11-2A** Eff 24 Jan 1600Z

SANYA, PR OF CHINA
SA CAT I RNAV
ILS DME Z Rwy 08



PANS OPS

ZJSY/SYX
PHOENIX

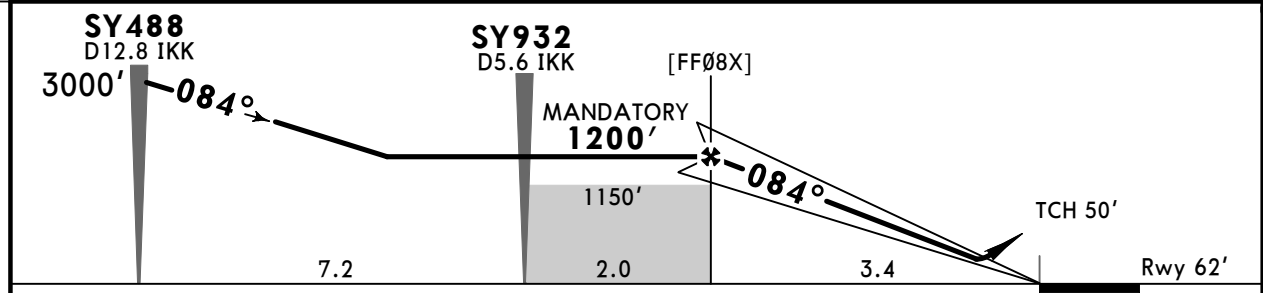
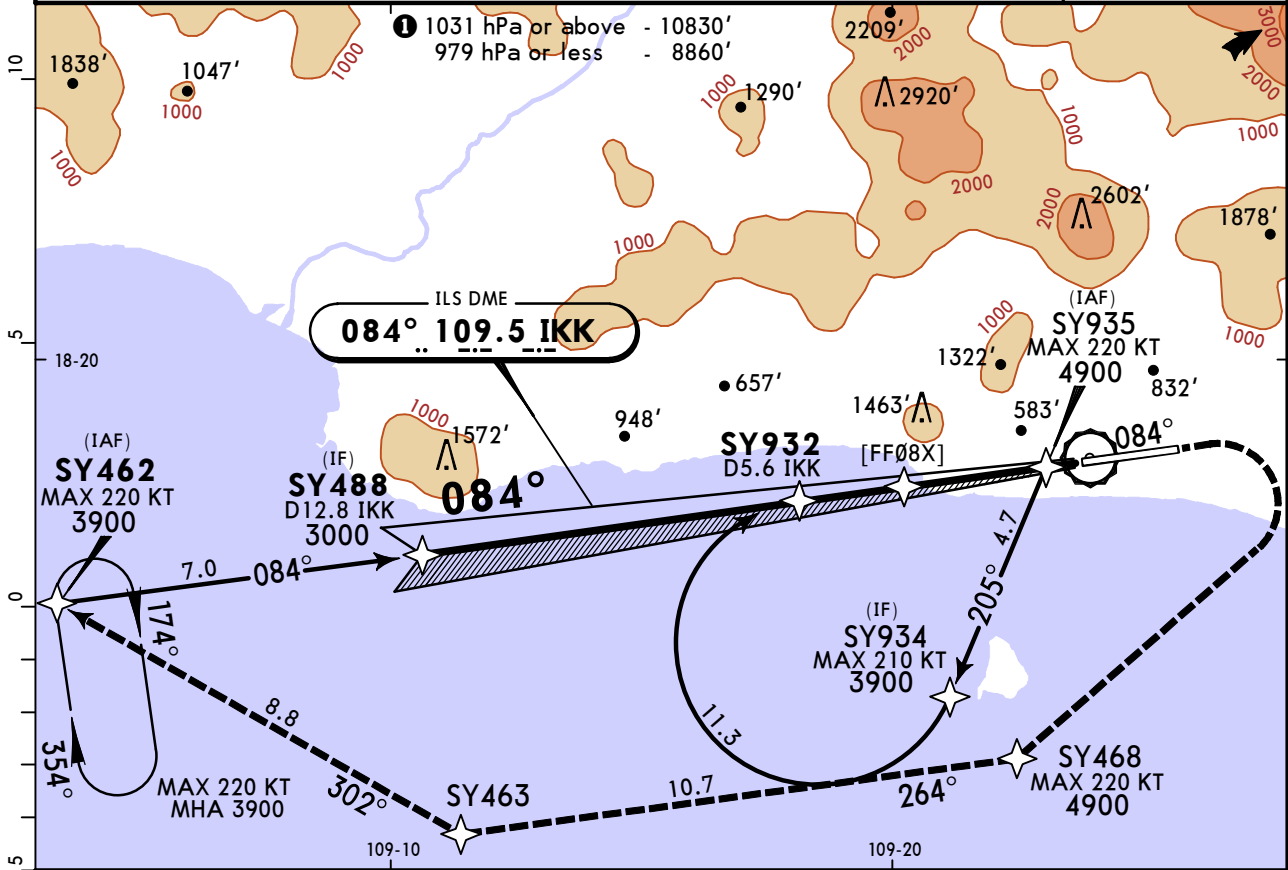
19 JAN 24
Eff 24 Jan 1600Z

(11-3)

RNP ILS DME X Rwy 08 (AR)

SANYA, PR OF CHINA

*D-ATIS 126.45	SANYA Approach (R) APP01 127.925 (By ATC)		APP02 125.55	FENGHUANG Tower 118.15	*Ground 121.7
LOC IKK 109.5	Final Apch Crs 084°	[FF08X] MANDATORY 1200' (1138')	ILS DA(H) Refer to Minimums	Apt Elev 94' Rwy 62'	<p>MSA ARP</p>
<p>MISSED APCH: Climb STRAIGHT AHEAD to 2500', turn RIGHT and climb to 4900', fly to SY462 via SY468 and SY463, join holding or by ATC. Turning is forbidden before THR. Refer to minimums for missed apch climb gradient.</p> <p>Alt Set: hPa Rwy Elev: 2 hPa Trans level: FL118 Trans alt: 9850' 1</p> <p>1. Authorization required. 2. Dual GNSS and IRU required. 3. RF required. 4. The navigation specification is RNP1 for missed apch procedure (not AR).</p>					



Gnd speed-Kts	70	90	100	120	140	160		2500' ↑ 4900' RT
GS	3.00°	372	478	531	637	743		

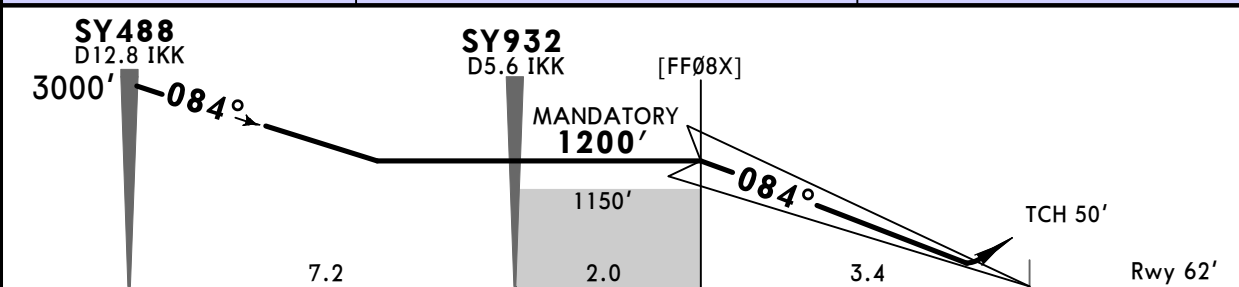
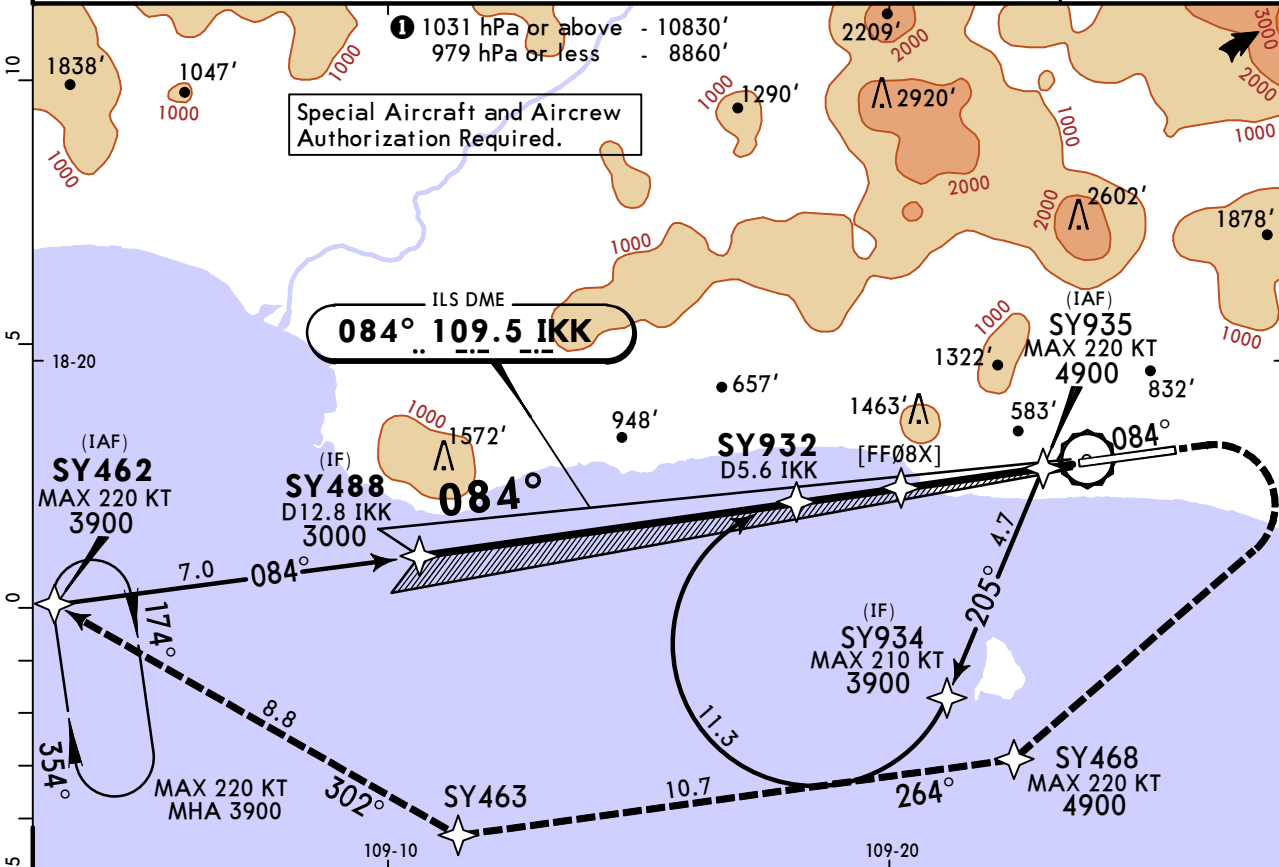
State				STRAIGHT-IN LANDING			
Missed apch climb grad 4.0% (244'/NM)		ILS		Missed apch climb grad 2.5% (152'/NM)			
DA(H) 262' (200')		ALS out		DA(H) AB: 407' (345') CD: 423' (361')		ALS out	
A	R550m	V1200m		R/V1200m		V2100m	
B	V800m						
C							
D							
R800m when a Flight Director or Autopilot or HUD to DA is not used.							

ZJSY/SYX
PHOENIX

JEPPESEN
19 JAN 24 **11-3A** Eff 24 Jan 1600Z

SANYA, PR OF CHINA
SA CAT I RNP
ILS DME X Rwy 08 (AR)

*D-ATIS 126.45	SANYA Approach (R) APP01 127.925 (By ATC)	APP02 125.55	FENGHUANG Tower 118.15	*Ground 121.7
LOC IKK 109.5	Final Apch Crs 084°	[FF08X] MANDATORY 1200' (1138')	SA CAT I ILS RA 158' DA(H) 212'(150')	Apt Elev 94' Rwy 62'
MISSED APCH: Climb STRAIGHT AHEAD to 2500', turn RIGHT and climb to 4900', fly to SY462 via SY468 and SY463, join holding or by ATC. Turning is forbidden before THR. Missed apch climb gradient 4.0% (244'/NM).				<p>MSA ARP</p>
Alt Set: hPa Rwy Elev: 2 hPa Trans level: FL118 Trans alt: 9850' 1				
1. Authorization required. 2. Dual GNSS and IRU required. 3. RF required. 4. The navigation specification is RNP1 for missed apch procedure (not AR).				



Gnd speed-Kts	70	90	100	120	140	160	HIALS 	2500' ↑	4900' ↻ RT
GS	3.00°	372	478	531	637	743			

State STRAIGHT-IN LANDING
SA CAT I ILS 1
RA 158'
 DA(H) **212'** (150')

R450m
1 HUD required.

PANS OPS

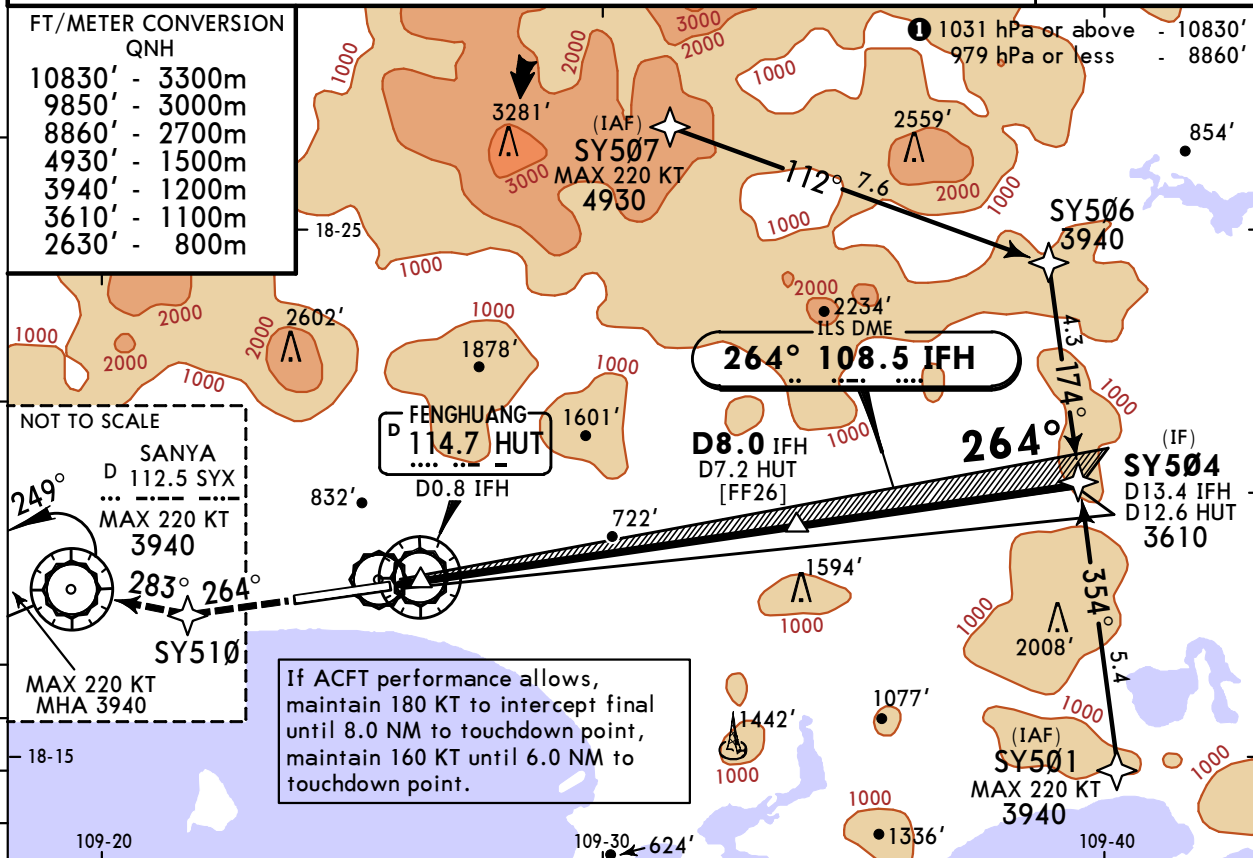
ZJSY/SYX
PHOENIX

19 JAN 24
Eff 24 Jan 1600Z

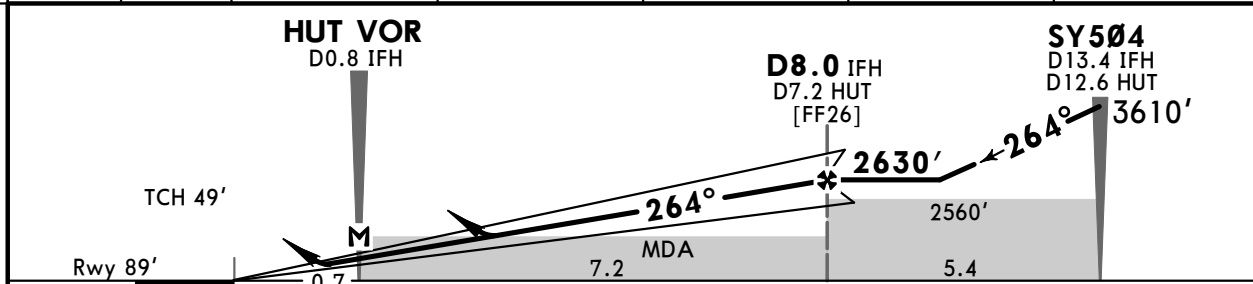
11-4

SANYA, PR OF CHINA
RNAV ILS DME Z Rwy 26

*D-ATIS 126.45	SANYA Approach (R) APP01 127.925 (By ATC)	APP02 125.55	FENGHUANG Tower 118.15	*Ground 121.7
LOC IFH 108.5	Final Apch Crs 264°	D8.0 IFH 2630' (2541')	ILS DA(H) Refer to Minimums	Apt Elev 94' Rwy 89'
MISSED APCH: Climb STRAIGHT AHEAD to SY510, turn RIGHT on 283° to SYX VOR at 3940' or above, join holding or by ATC. Refer to minimums for missed apch climb gradient.				
Alt Set: hPa	Rwy Elev: 3 hPa	Trans level: FL118	Trans alt: 9850' ①	MSA ARP



LOC (GS out)	IFH DME	3.0	4.0	5.0	6.0	7.0
	ALTITUDE	1050'	1370'	1680'	2000'	2320'



Gnd speed-Kts	70	90	100	120	140	160	HIALS PAPI SY510
ILS GS or LOC Descent Angle	3.00°	372	478	531	637	743	
MAP at VOR/D0.8 IFH							

State		STRAIGHT-IN LANDING		LOC (GS out)		CIRCLE-TO-LAND	
MACG 5.0% (304'/NM)		MACG 2.5% (152'/NM)		CDFA		DAY only. South of RWY only.	
DA(H) 289' (200')		A: 713' (624') DA(H) B: 729' (640') CD: 746' (657')		MDA(H) 1020' (931')		MDA(H)	
ALS out		ALS out		ALS out		Max Kts	
A		V2800m	V3700m			100	1630' (1536') V5000m
B	R550m	V2900m	V3800m	V4600m	V5400m	135	
C	V800m	V3000m	V3900m			180	
D						205	
R800m when a Flight Director or Autopilot or HUD to DA is not used.							

ZJSY/SYX
PHOENIX

19 JAN 24
Eff 24 Jan 1600Z

11-5

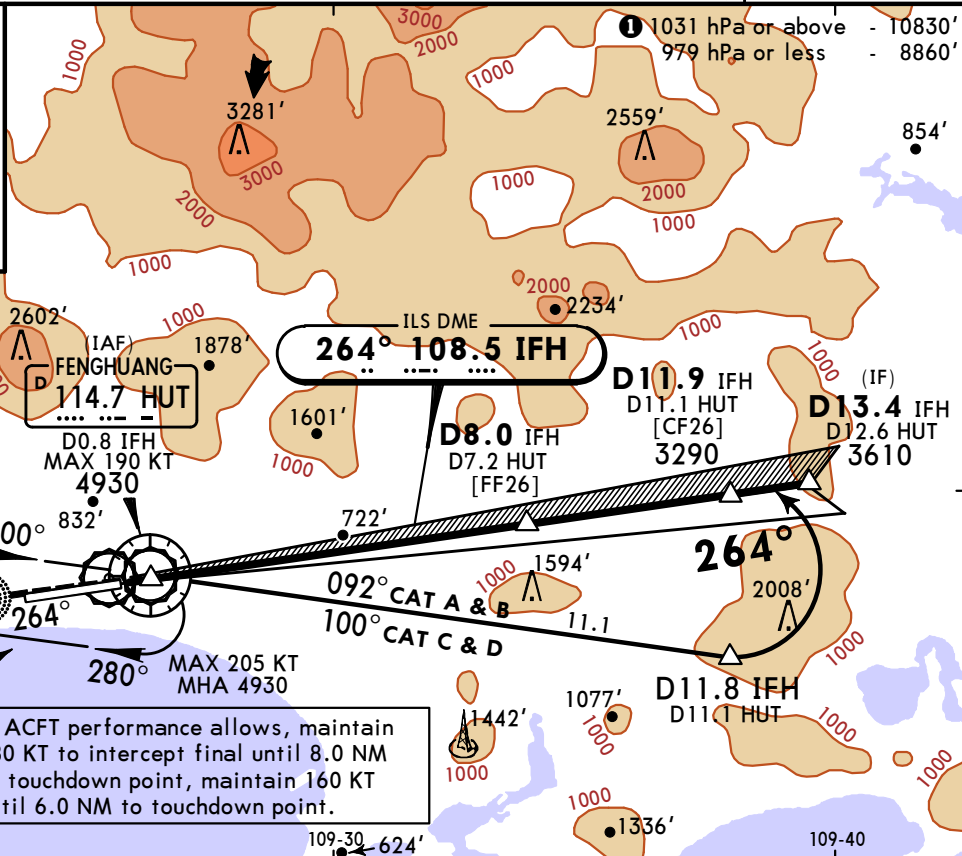
JEPPESSEN

SANYA, PR OF CHINA
ILS DME Y Rwy 26

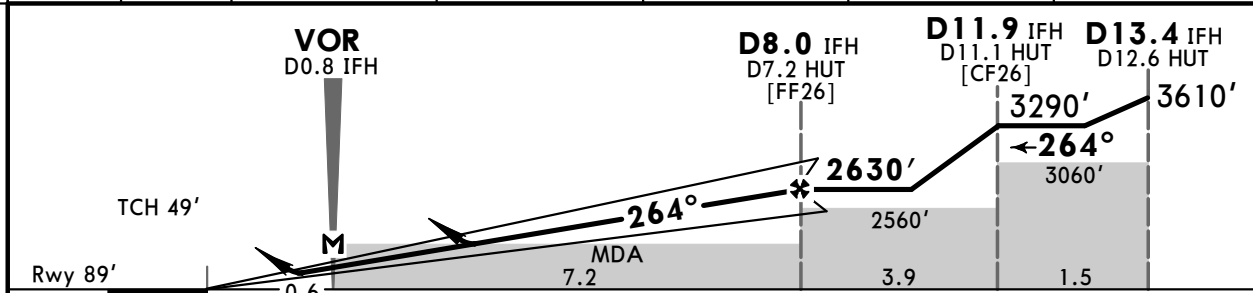
*D-ATIS 126.45	SANYA Approach (R) APP01 127.925 (By ATC)	APP02 125.55	FENGHUANG Tower 118.15	*Ground 121.7
LOC IFH 108.5	Final Apch Crs 264°	D8.0 IFH 2630' (2541')	ILS DA(H) Refer to Minimums	Apt Elev 94' Rwy 89'
MISSED APCH: Climb STRAIGHT AHEAD to K Lctr, then on 249° to D9.5 HUT, turn LEFT (MAX 205 KT) to VOR at 4930' or above, join holding or by ATC. Refer to minimums for missed apch climb gradient.				
Alt Set: hPa		Rwy Elev: 3 hPa	Trans level: FL118	Trans alt: 9850' 1

FT/METER CONVERSION
QNH

10830'	-	3300m
9850'	-	3000m
8860'	-	2700m
4930'	-	1500m
3610'	-	1100m
3290'	-	1000m
2630'	-	800m



LOC (GS out)	IFH DME	3.0	4.0	5.0	6.0	7.0
	ALTITUDE	1050'	1370'	1680'	2000'	2320'



Gnd speed-Kts	70	90	100	120	140	160	HIALS PAPI	K 305	D9.5 HUT on 249°
ILS GS or LOC Descent Angle	3.00°	372	478	531	637	743			
MAP at VOR/D0.8 IFH									

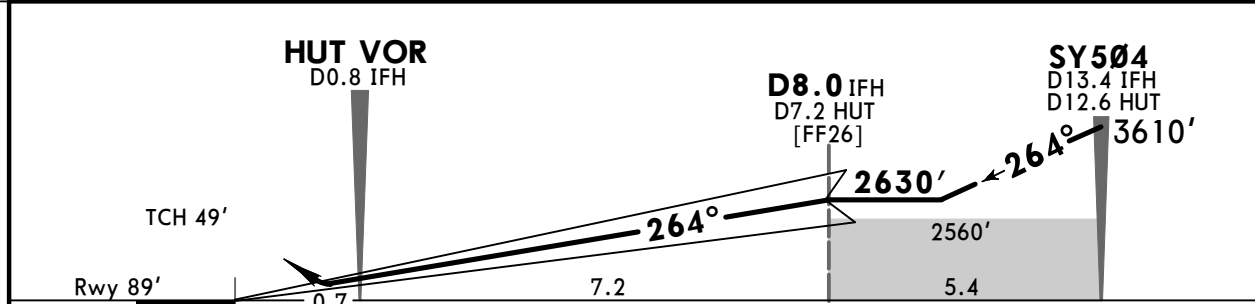
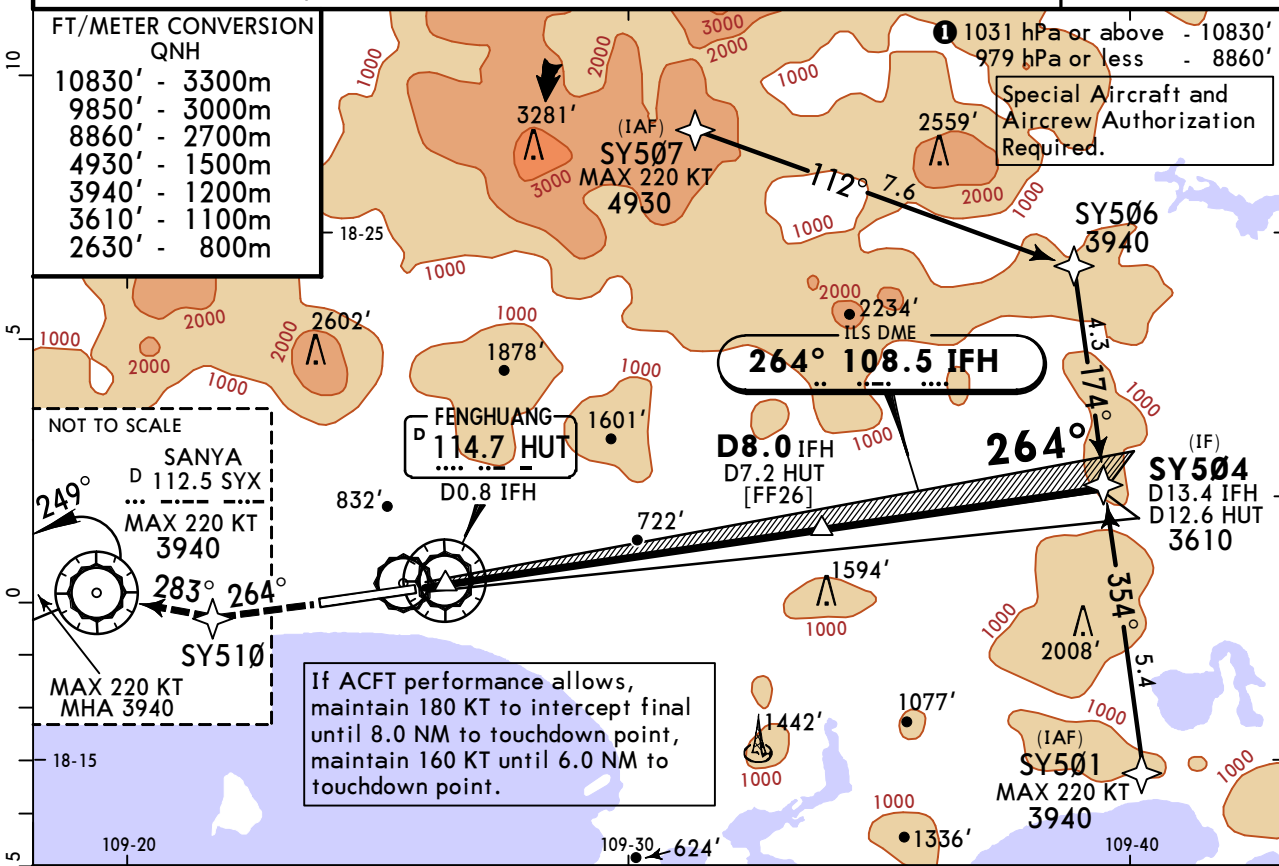
State		STRAIGHT-IN LANDING		LOC (GS out)		CIRCLE-TO-LAND	
MACG 5.0% (304'/NM)		MACG 2.5% (152'/NM)		CDFA		DAY only. South of RWY only.	
DA(H) 289' (200')		A: 713' (624') B: 729' (640')		MDA(H) 1020' (931')		MDA(H)	
ALS out		ALS out		ALS out		Max Kts	
A		V2800m	V3700m			100	1630' (1536') V5000m
B	R550m	V2900m	V3800m	V4600m	V5400m	135	
C	V800m	V3000m	V3900m			180	
D						205	
1 R800m when a Flight Director or Autopilot or HUD to DA is not used.							

ZJSY/SYX
PHOENIX

JEPPESEN
19 JAN 24 (11-5A) Eff 24 Jan 1600Z

SANYA, PR OF CHINA
SA CAT I RNAV
ILS DME Z Rwy 26

*D-ATIS 126.45		SANYA Approach (R) APP01 127.925 (By ATC)		APP02 125.55		FENGHUANG Tower 118.15	*Ground 121.7
LOC IFH 108.5	Final Apch Crs 264°	D8.0 IFH 2630' (2541')		SA CAT I ILS RA 188' DA(H) 239'(150')		Apt Elev 94' Rwy 89'	
MISSED APCH: Climb STRAIGHT AHEAD to SY510, turn RIGHT on 283° to SYX VOR at 3940' or above, join holding or by ATC. Missed apch climb gradient 5.0% (304'/NM).							
Alt Set: hPa		Rwy Elev: 3 hPa	Trans level: FL118		Trans alt: 9850' 1		



Gnd speed-Kts	70	90	100	120	140	160	HIALS PAPI
Gs	3.00°	372	478	531	637	849	

State STRAIGHT-IN LANDING
SA CAT I ILS
RA 188'
 DA(H) **239'** (150')

R450m
1 HUD required.

PAINS OPS

ZJSY/SYX
PHOENIX

19 JAN 24
Eff 24 Jan 1600Z

JEPPESEN

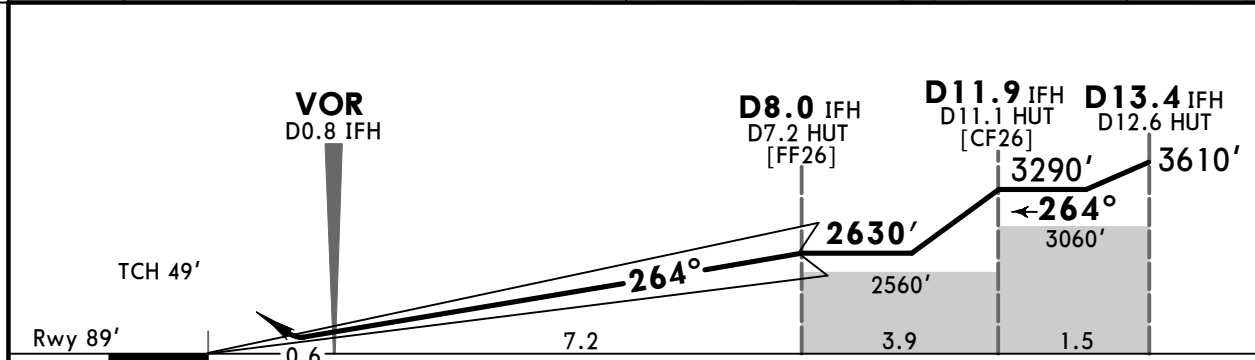
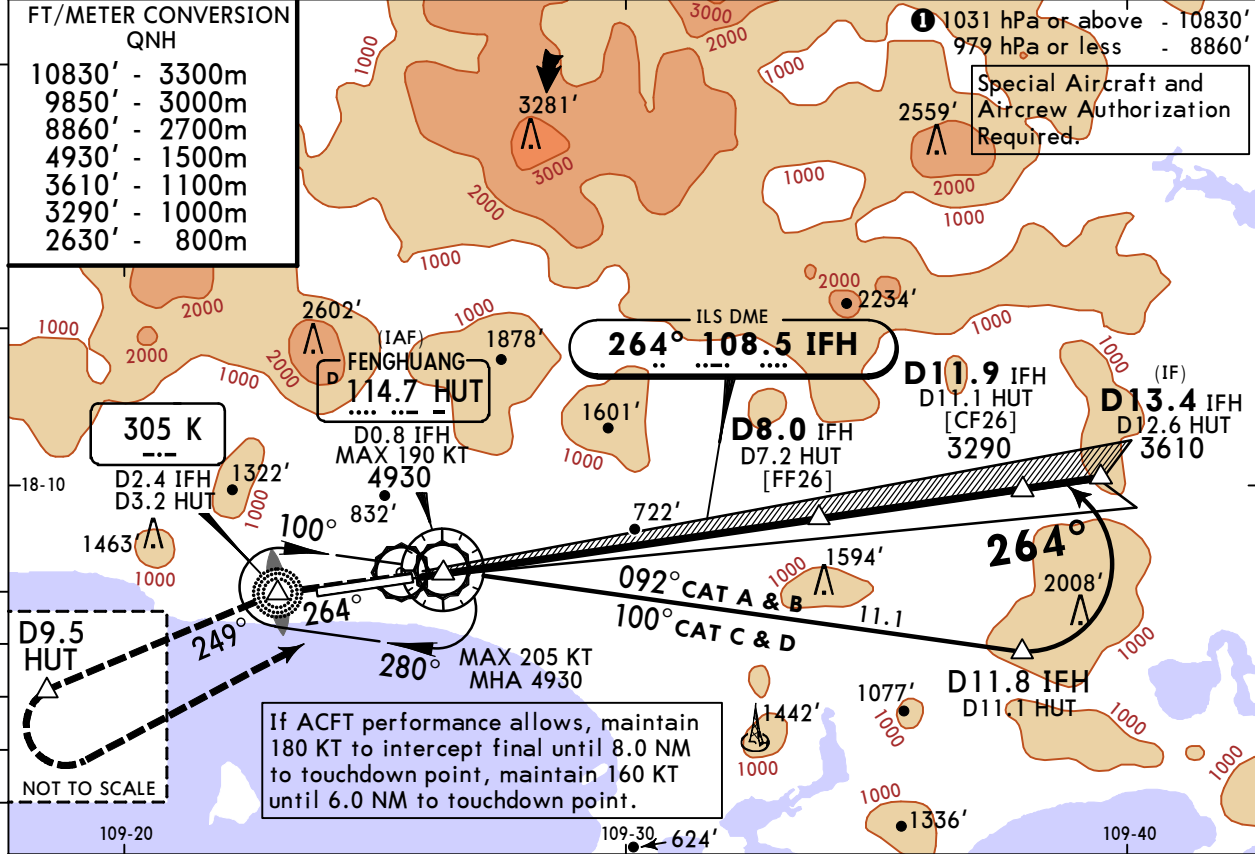
11-5B

SANYA, PR OF CHINA
SA CAT I ILS DME Y Rwy 26

*D-ATIS 126.45	SANYA Approach (R) APP01 127.925 (By ATC)	APP02 125.55	FENGHUANG Tower 118.15	*Ground 121.7
LOC IFH 108.5	Final Apch Crs 264°	D8.0 IFH 2630' (2541')	SA CAT I ILS RA 188' DA(H) 239'(150')	Apt Elev 94' Rwy 89'
MISSED APCH: Climb STRAIGHT AHEAD to K Lctr, then on 249° to D9.5 HUT, turn LEFT (MAX 205 KT) to VOR at 4930' or above, join holding or by ATC. Missed apch climb gradient 5.0% (304'/NM).				
Alt Set: hPa		Rwy Elev: 3 hPa	Trans level: FL118	Trans alt: 9850' ①

FT/METER CONVERSION
QNH

10830'	-	3300m
9850'	-	3000m
8860'	-	2700m
4930'	-	1500m
3610'	-	1100m
3290'	-	1000m
2630'	-	800m



Gnd speed-Kts	70	90	100	120	140	160	HIALS PAPI K 305 D9.5 HUT on 249°
Gs	3.00°	372	478	531	637	849	

State STRAIGHT-IN LANDING

SA CAT I ILS **①**
RA 188'
DA(H) **239'(150')**

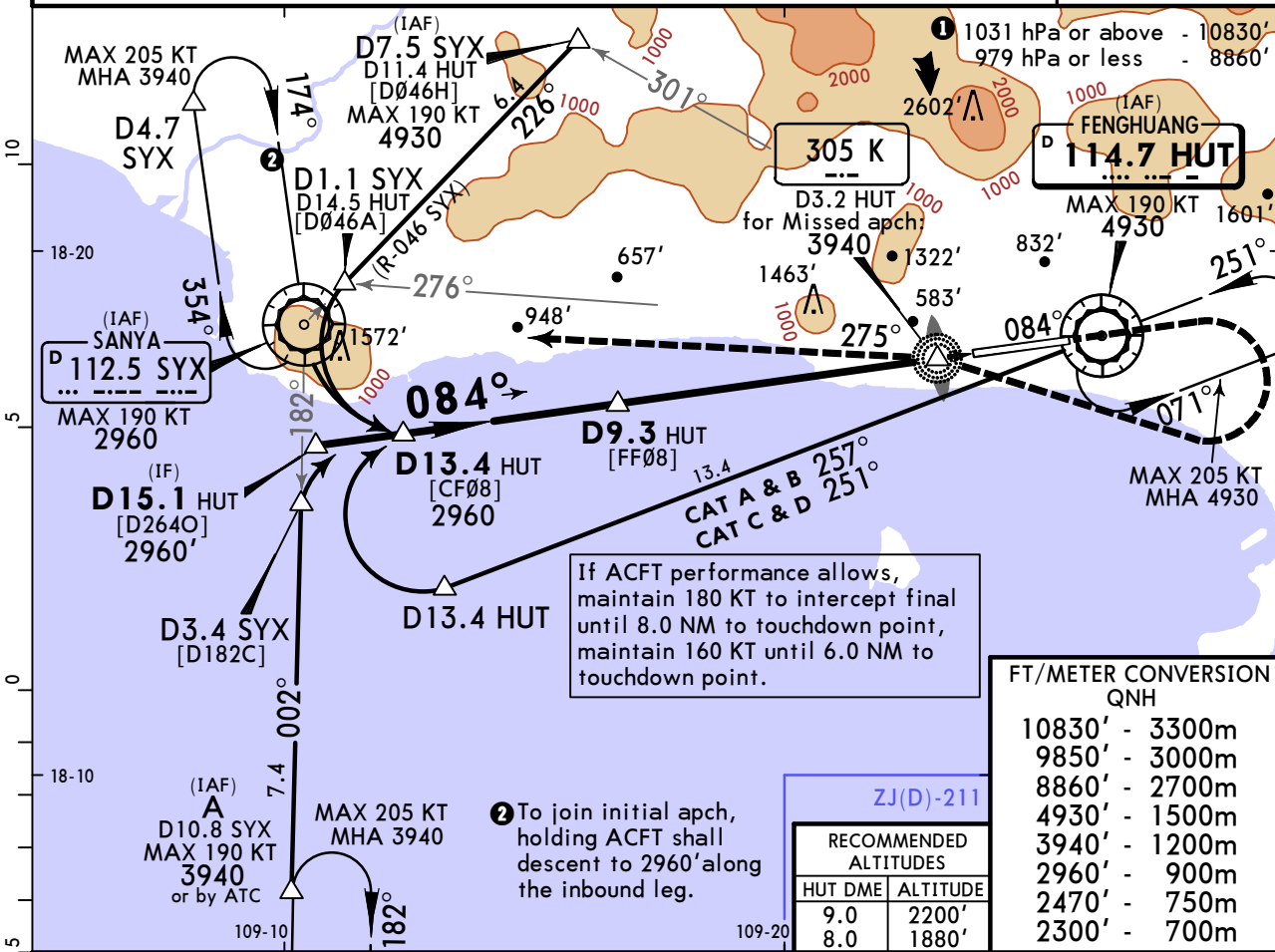
R450m

① HUD required.

ZJSY/SYX PHOENIX

JEPPESSEN SANYA, PR OF CHINA
19 JAN 24 (13-1) Eff 24 Jan 1600Z VOR DME Rwy 08

*D-ATIS 126.45	SANYA Approach (R) APP01 127.925 (By ATC)		APP02 125.55	FENGHUANG Tower 118.15	*Ground 121.7
VOR HUT 114.7	Final Apch Crs 084°	D9.3 HUT 2300' (2238')	MDA(H) 1630' (1568')	Apt Elev 94' Rwy 62'	
MISSED APCH: Climb STRAIGHT AHEAD to 2470', turn RIGHT (MAX 190 KT) to K NDB at 3940', then on 275° to SYX VOR, join holding or by ATC. Turning is forbidden before MAP.					
Alt Set: hPa	Rwy Elev: 2 hPa	Trans level: FL118	Trans alt: 9850' ①	MSA HUT VOR	

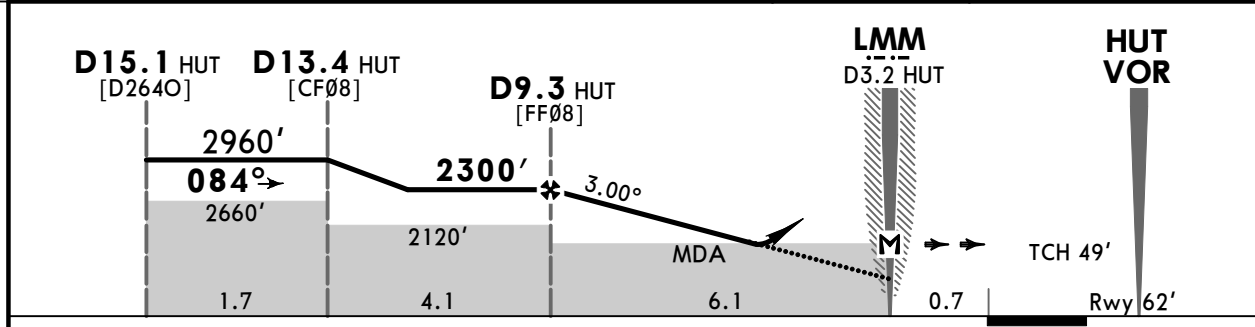


FT/METER CONVERSION QNH

10830'	3300m
9850'	3000m
8860'	2700m
4930'	1500m
3940'	1200m
2960'	900m
2470'	750m
2300'	700m

ZJ(D)-211

RECOMMENDED ALTITUDES	
HUT DME	ALTITUDE
9.0	2200'
8.0	1880'



Gnd speed-Kts	70	90	100	120	140	160		3940' K 305 at
Descent Angle	3.00°	372	478	531	637	743		
MAP at LMM/D3.2 HUT								

State STRAIGHT-IN LANDING		CIRCLE-TO-LAND	
CDFA		DAY only.	
MDA(H) 1630' (1568')		South of RWY only.	
ALS out		MDA(H) _____	
A		Max Kts	
B	V5000m	100	
C		135	
D	V9200m	1630' (1536')	V5000m
		180	
		205	

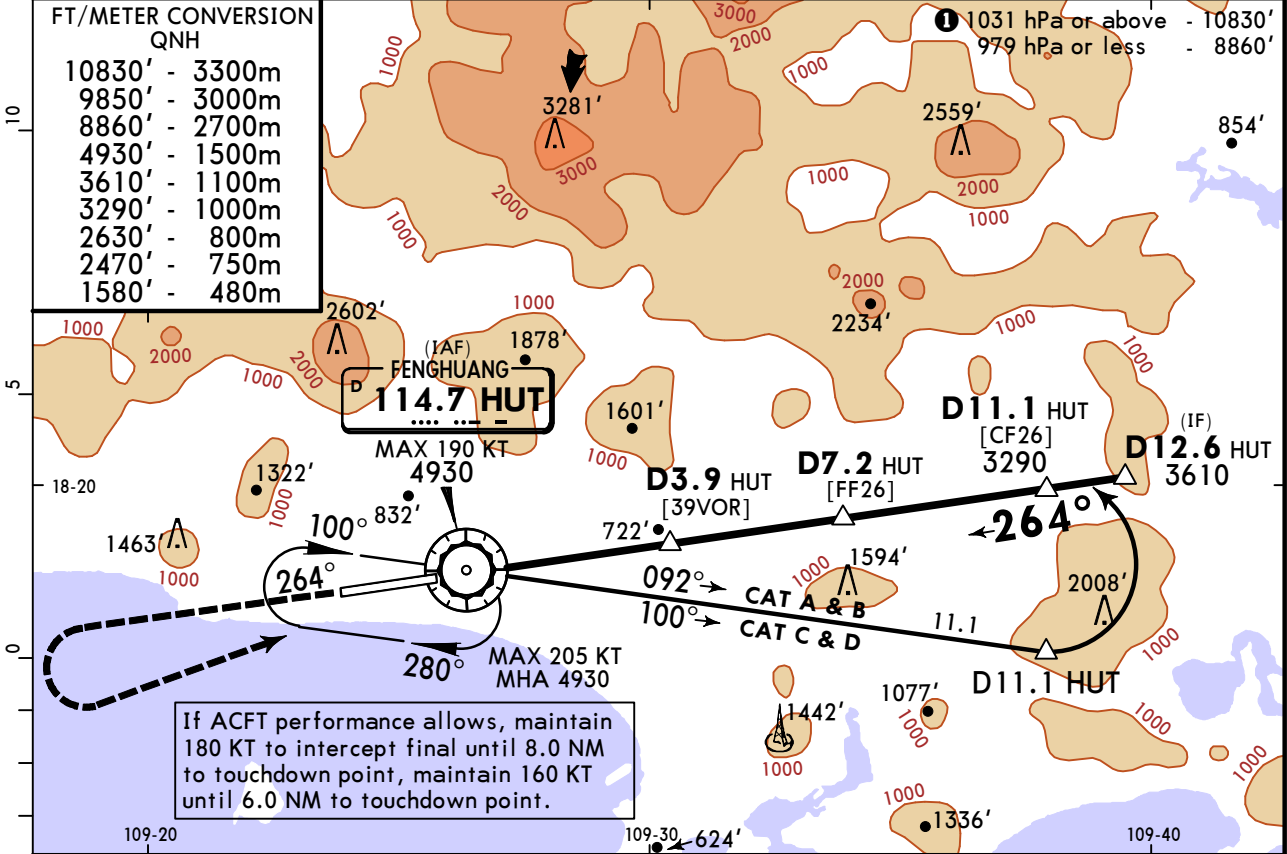
ZJSY/SYX
PHOENIX

JEPPESEN SANYA, PR OF CHINA
19 JAN 24 (13-2) Eff 24 Jan 1600Z VOR DME Rwy 26

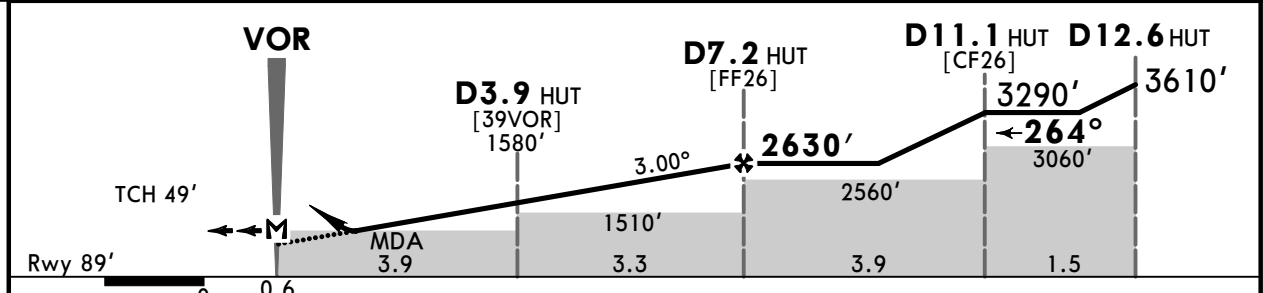
*D-ATIS 126.45	SANYA Approach (R) APP01 127.925 (By ATC)	APP02 125.55	FENGHUANG Tower 118.15	*Ground 121.7
VOR HUT 114.7	Final Apch Crs 264°	D7.2 HUT 2630' (2541')	MDA(H) 1020' (931')	Apt Elev 94' Rwy 89'
MISSED APCH: Climb STRAIGHT AHEAD to 2470', turn LEFT (MAX 205 KT) to VOR at 4930' or above, join holding or by ATC. Turning is forbidden before MAP.				
Alt Set: hPa	Rwy Elev: 3 hPa	Trans level: FL118	Trans alt: 9850' ①	MSA HUT VOR

FT/METER CONVERSION
QNH

10830'	-	3300m
9850'	-	3000m
8860'	-	2700m
4930'	-	1500m
3610'	-	1100m
3290'	-	1000m
2630'	-	800m
2470'	-	750m
1580'	-	480m



HUT DME	3.0	4.0	5.0	6.0	7.0
ALTITUDE	1300'	1620'	1930'	2250'	2570'



Gnd speed-Kts	70	90	100	120	140	160	HIALS PAPI 2470'
Descent Angle 3.00°	372	478	531	637	743	849	
MAP at VOR							

PAINS OPS	State				STRAIGHT-IN LANDING		CIRCLE-TO-LAND	
					CDFA		DAY only. South of RWY only.	
					MDA(H) 1020' (931')		ALS out	
	A	V4600m		V5400m		Max Kts	MDA(H)	
B					100			
C					135	1630' (1536') V5000m		
D					180			
					205			

Chart changes since cycle 10-2024

ADD = added chart, REV = revised chart, DEL = deleted chart.

ACT	PROCEDURE IDENT	INDEX	REV DATE	EFF DATE
SANYA, (PHOENIX - ZJSY)				
REV	POR 8YD & 9YD RNAV DEPS	10-3	17 May 2024	
REV	POR 7ZD, 8ZD & 9ZD RNAV D...	10-3A	17 May 2024	
REV	KAG 8YD & 9YD, SAV 6YD, 7...	10-3B	17 May 2024	
REV	KAG 9ZD, SAV 8ZD & 9ZD RN...	10-3C	17 May 2024	

TERMINAL CHART CHANGE NOTICES

No Chart Change Notices for Airport ZJSY