

List of pages in this Trip Kit

Trip Kit Index

Airport Information For ZSQD

Terminal Charts For ZSQD

Revision Letter For Cycle 16-2021

Change Notices

Notebook

General Information

Location: QINGDAO CHN
ICAO/IATA: ZSQD / TAO
Lat/Long: N36° 15.9', E120° 22.4'
Elevation: 33 ft

Airport Use: Public
Daylight Savings: Not Observed
UTC Conversion: -8:00 = UTC
Magnetic Variation: 6.0° W

Fuel Types: Jet
Repair Types: Minor Airframe, Minor Engine
Customs: Yes
Airport Type: IFR
Landing Fee: Yes
Control Tower: Yes
Jet Start Unit: No
LLWS Alert: No
Beacon: No

Sunrise: 2112 Z
Sunset: 1056 Z

Runway Information

Runway: 17
Length x Width: 11155 ft x 148 ft
Surface Type: asphalt
TDZ-Elev: 32 ft
Lighting: Edge, ALS, Centerline

Runway: 35
Length x Width: 11155 ft x 148 ft
Surface Type: asphalt
TDZ-Elev: 33 ft
Lighting: Edge, ALS, Centerline

Communication Information

ATIS: 131.450
ATIS: 127.200
Qingdao Tower: 118.700
Qingdao Tower: 124.300 Secondary
Qingdao Ground: 121.650
Qingdao Clearance Delivery: 121.950
Qingdao Approach: 119.400
Qingdao Approach: 119.775
Qingdao Approach: 121.150
Qingdao Approach: 124.600 Secondary

Qingdao Operations: 132.000

ZSQD/TAO
LIUTING

JEPPesen

12 FEB 21

10-1P

QINGDAO, PR OF CHINA

AIRPORT BRIEFING

1. GENERAL

1.1. ATIS

D-ATIS 127.2

1.2. LOW VISIBILITY PROCEDURE (LVP)

Low visibility take-off and special CAT I/II operation based on HUD.

Special CAT I and LVP operation with RVR 200m based on HUD available for RWY 17/35. Special CAT II and LVP operation with RVR 150m based on HUD available for RWY 35. Crew should report ATC if special CAT I/II operation in need.

1.2.1. PREPARATION

When RVR decrease to 600m and expected to 550m or below within 30 minutes, or ceiling (or vertical VIS) decrease to 80m and expected to 60m or below within 30 minutes.

1.2.2. IMPLEMENTATION

The tower declare the operation put into force.

Special CAT I based on HUD

When RVR is below 550m but not less than 450m or ceiling (or vertical VIS) is below 60m but not less than 45m.

Special CAT II based on HUD

When RVR is below 450m but not less than 350m or ceiling (or vertical VIS) is below 45m but not less than 30m.

LVP take-off with RVR 200m

When RVR is below 400m but not less than 200m.

LVP take-off with RVR 150m

When RVR is below 200m but not less than 150m.

1.2.3. TERMINATION

The operation should be terminated by TWR.

Special CAT I based on HUD

- When RVR remain above 550m.

Special CAT II based on HUD

- When RVR remain above 450m.

LVP take-off with RVR 200m

- When RVR remain above 400m.

LVP take-off with RVR 150m

- When RVR remain above 200m.

1.3. TAXI PROCEDURES

Follow-me and towing services available via GND.

TWY A7 available for ACFT to exit stands 41 thru 51 and B1 thru B3. ACFT can taxi on TWY A7 when temporary stands T3 thru T6 are in use or in case of emergency.

TWY A8 only available for ACFT to taxi into stands B1 thru B3 for parking.

1.4. PARKING PROCEDURES

If an ACFT may possibly cause injury or constitute a hazard to personnel or equipment around while taxiing on ground surface, a tow tractor shall be used.

Stand 43 is forbidden to be used as taxi line.

ACFT shall taxi in stands 17 thru 20 from TWY A6 via L6, while pushed back nose to Southeast is forbidden.

ACFT shall not taxi into a stand on own power without guidance of a marshaller; entry into stands 5 thru 66, B1 thru B3, C1 thru C7, D1 thru D7, F1, F2, T1 and T3 thru T6 shall be guided by Follow-me vehicle.

1.5. OTHER INFORMATION

RWY 17 right-hand circuit.

Birds.

Requirements when airspace is limited: Arrivals or departures may not fly East of the line between FD - AVBIK - ABVER - LATUX.

If aircrew consider that they cannot fulfil the requirements, pilot shall inform ATC before applying for delivery clearance.

ZSQD/TAO
LIUTING

JEPPESEN

12 FEB 21

10-1P1

QINGDAO, PR OF CHINA

AIRPORT BRIEFING

2. ARRIVAL

2.1. APPROACH PROCEDURES

Arriving ACFT shall comply with following requirement if the airspace is limited:
When RWY 35 is in use, ACFT shall keep the final to D6.0 IPP or D8.0 TAO at 2690' (820m) or above.

2.2. COMMUNICATION FAILURE PROCEDURES

RWY 17

Proceed to TAO according to last assigned altitude. If the designated altitude is below 5910' climb to 5910' immediately; otherwise maintain designated altitude. After passing TAO descent in holding to 1810' and land according IAP. If passing TAO at 5910' land directly according IAP.

RWY 35

Proceed to XDX according to last assigned altitude. If the designated altitude is below 5910' climb to 5910' immediately; otherwise maintain designated altitude. After passing XDX descent in holding to 2960' and land according IAP. If passing XDX at 5910' land directly according IAP.

2.3. RWY OPERATIONS

Between 2300-1559 vacating RWY via TWY D is forbidden.

3. DEPARTURE

3.1. START-UP PROCEDURES

Engine run-ups are subject to GND clearance and may only be carried out at designated location. Fast engine run-ups near boarding bridges, on apron or TWYs are strictly forbidden.

3.2. OTHER INFORMATION

Departing ACFT shall comply with following requirement if the airspace is limited:

When RWY 17 is in use, ACFT shall keep the upwind to D8.0 TAO at or above 2960' (900m).

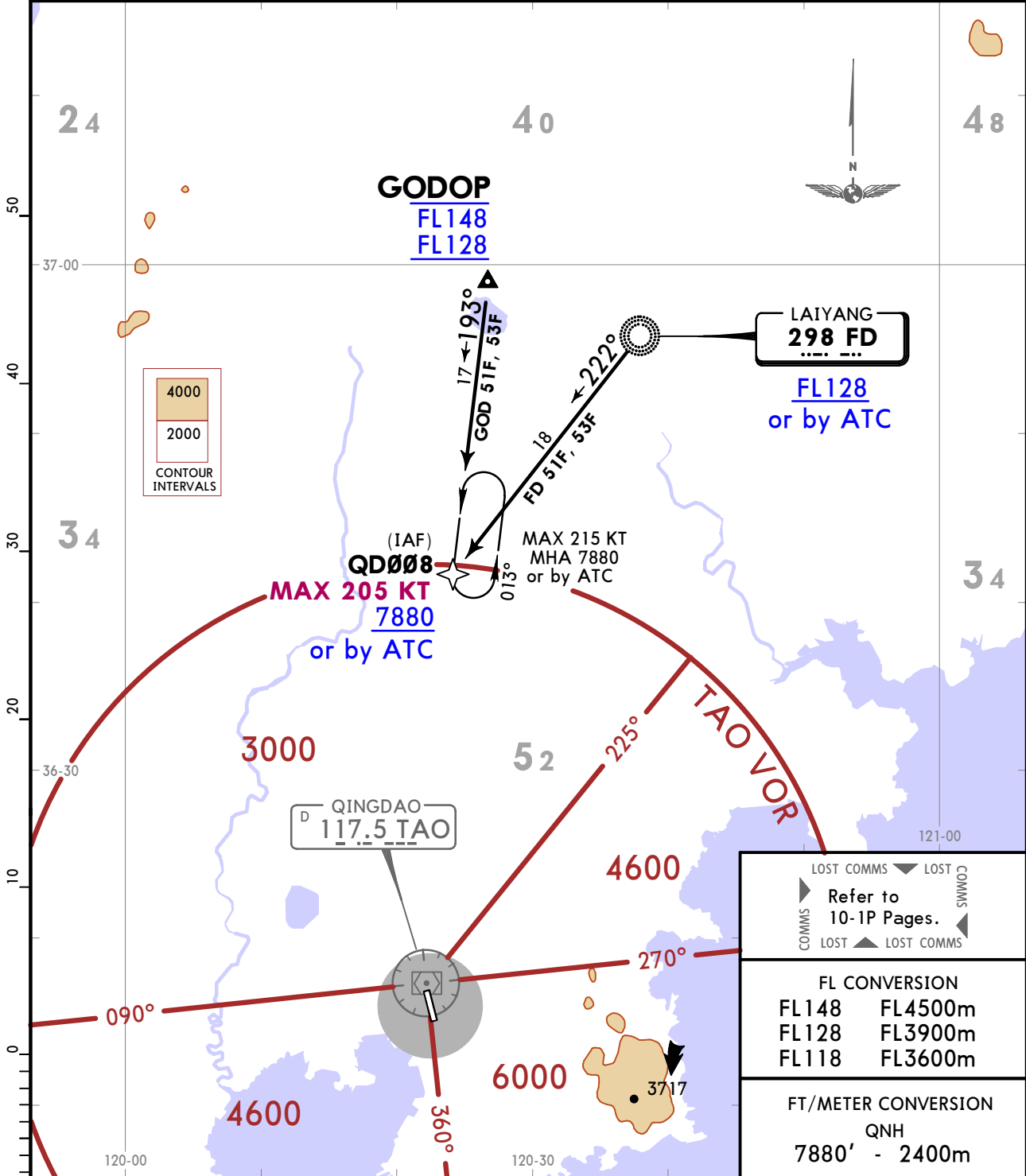
If aircrew consider that they cannot fulfil the requirements, pilot shall inform ATC before applying for delivery clearance.

ZSQD/TAO
LIUTING

JEPPESEN QINGDAO, PR OF CHINA
28 FEB 20 **10-2** **RNAV STAR**

D-ATIS 127.2	Apt Elev 33	Alt Set: hPa Trans level: FL118 1. RADAR required. 2. GNSS required. 3. RNAV 1.
------------------------	-----------------------	--

FD 51F, FD 53F
GOD 51F, GOD 53F
RNAV ARRIVALS
(RWY 17)

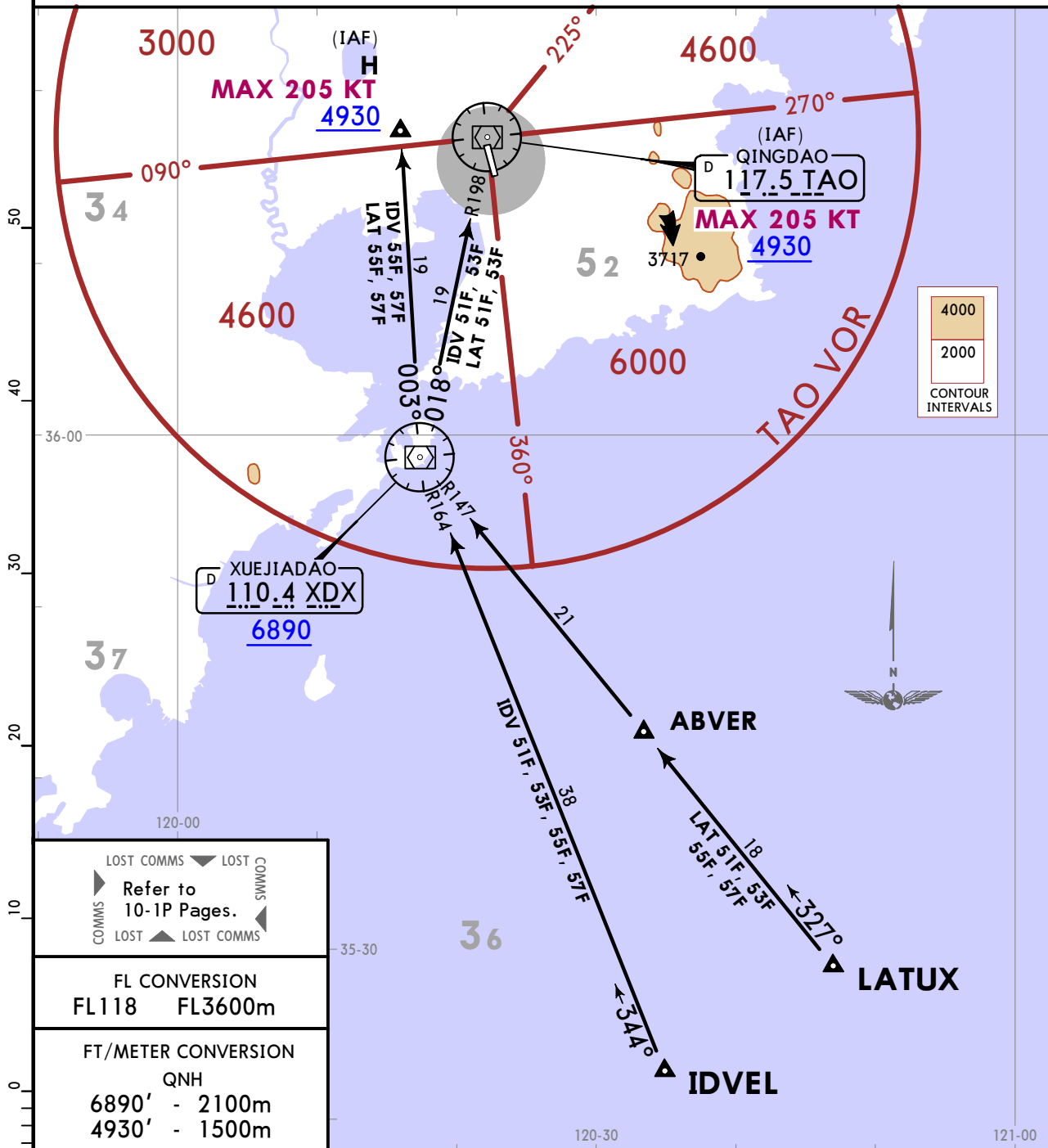


STAR	ROUTING
FD 51F	FD (FL128+ or by ATC) - QD008 (7880+ or by ATC; K205-).
FD 53F BY ATC	
GOD 51F	GODOP (FL148-; FL128+) - QD008 (7880+ or by ATC; K205-).
GOD 53F BY ATC	

ZSQD/TAO LIUTING

D-ATIS 127.2	Apt Elev 33	Alt Set: hPa Trans level: FL118 1. RADAR required. 2. GNSS required. 3. RNAV 1.
------------------------	-----------------------	--

IDV 51F, IDV 53F, IDV 55F, IDV 57F
LAT 51F, LAT 53F, LAT 55F, LAT 57F
RNAV ARRIVALS
(RWY 17)



LOST COMMS ▼ LOST COMMS Refer to 10-1P Pages. COMMS ▲ COMMS
FL CONVERSION FL118 FL3600m
FT/METER CONVERSION QNH 6890' - 2100m 4930' - 1500m

STAR	ROUTING
IDV 51F	IDVEL - XDX (6890+) - TAO (K205-; 4930+).
IDV 53F BY ATC	
IDV 55F BY ATC	IDVEL - XDX (6890+) - H (K205-; 4930+).
IDV 57F BY ATC	
LAT 51F	LATUX - ABVER - XDX (6890+) - TAO (K205-; 4930+).
LAT 53F BY ATC	
LAT 55F BY ATC	LATUX - ABVER - XDX (6890+) - H (K205-; 4930+).
LAT 57F BY ATC	

ZSQD/TAO
LIUTING

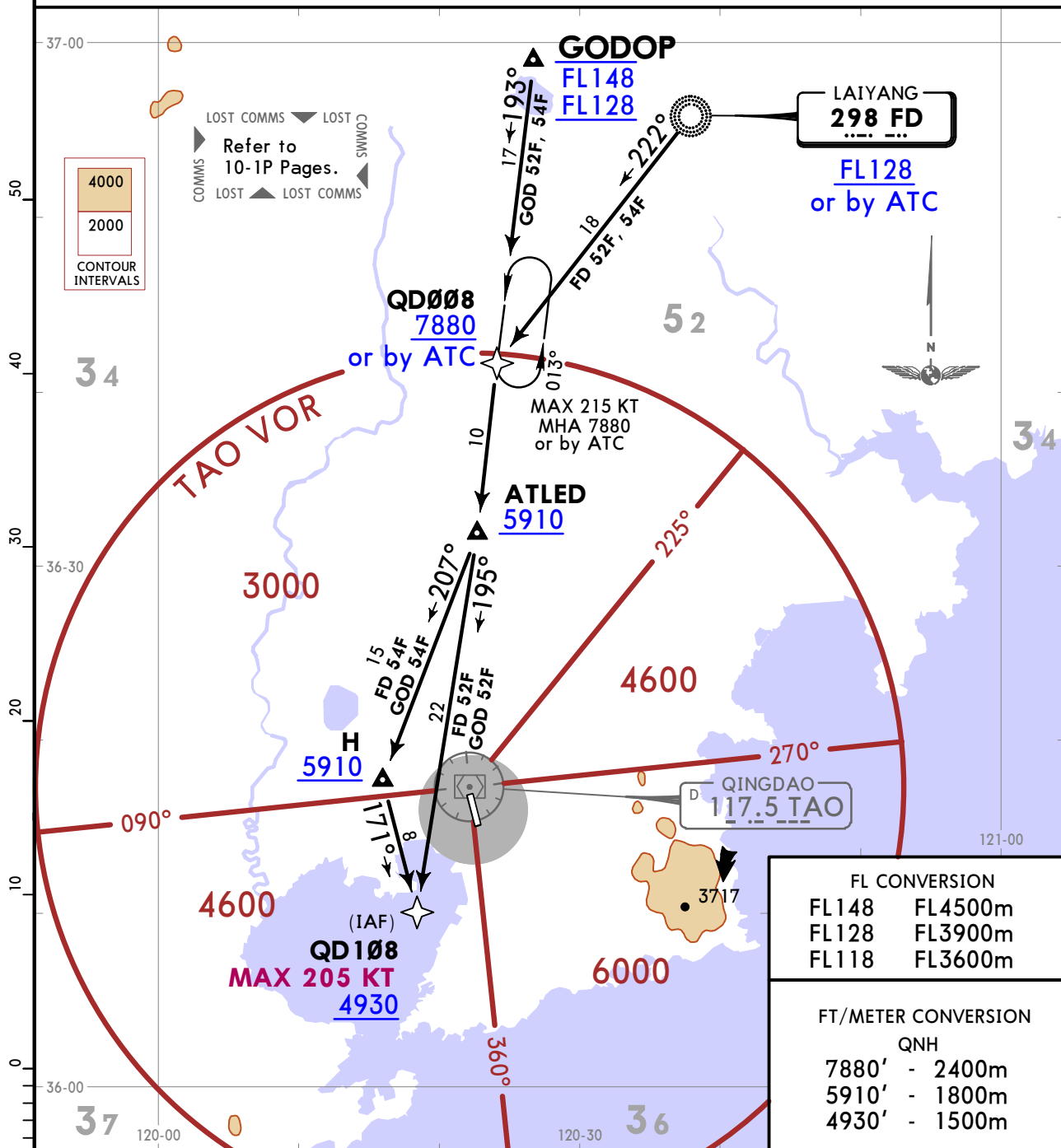
JEPPESEN
28 FEB 20 (10-2B)

QINGDAO, PR OF CHINA
RNAV STAR

D-ATIS 127.2	Apt Elev 33	Alt Set: hPa Trans level: FL118 1. RADAR required. 2. GNSS required. 3. RNAV 1.
------------------------	-----------------------	--

FD 52F, FD 54F
GOD 52F, GOD 54F
RNAV ARRIVALS
(RWY 35)

SPEED: INITIAL APPROACH MAX 205 KT



STAR	ROUTING
FD 52F	FD (FL128+ or by ATC) - QD008 (7880+ or by ATC) - ATLED (5910+) - QD108 (K205-; 4930+).
FD 54F BY ATC	FD (FL128+ or by ATC) - QD008 (7880+ or by ATC) - ATLED (5910+) - H (5910+) - QD108 (K205-; 4930+).
GOD 52F	GODOP (FL148-; FL128+) - QD008 (7880+ or by ATC) - ATLED (5910+) - QD108 (K205-; 4930+).
GOD 54F BY ATC	GODOP (FL148-; FL128+) - QD008 (7880+ or by ATC) - ATLED (5910+) - H (5910+) - QD108 (K205-; 4930+).

ZSQD/TAO
LIUTING

JEPPESEN QINGDAO, PR OF CHINA

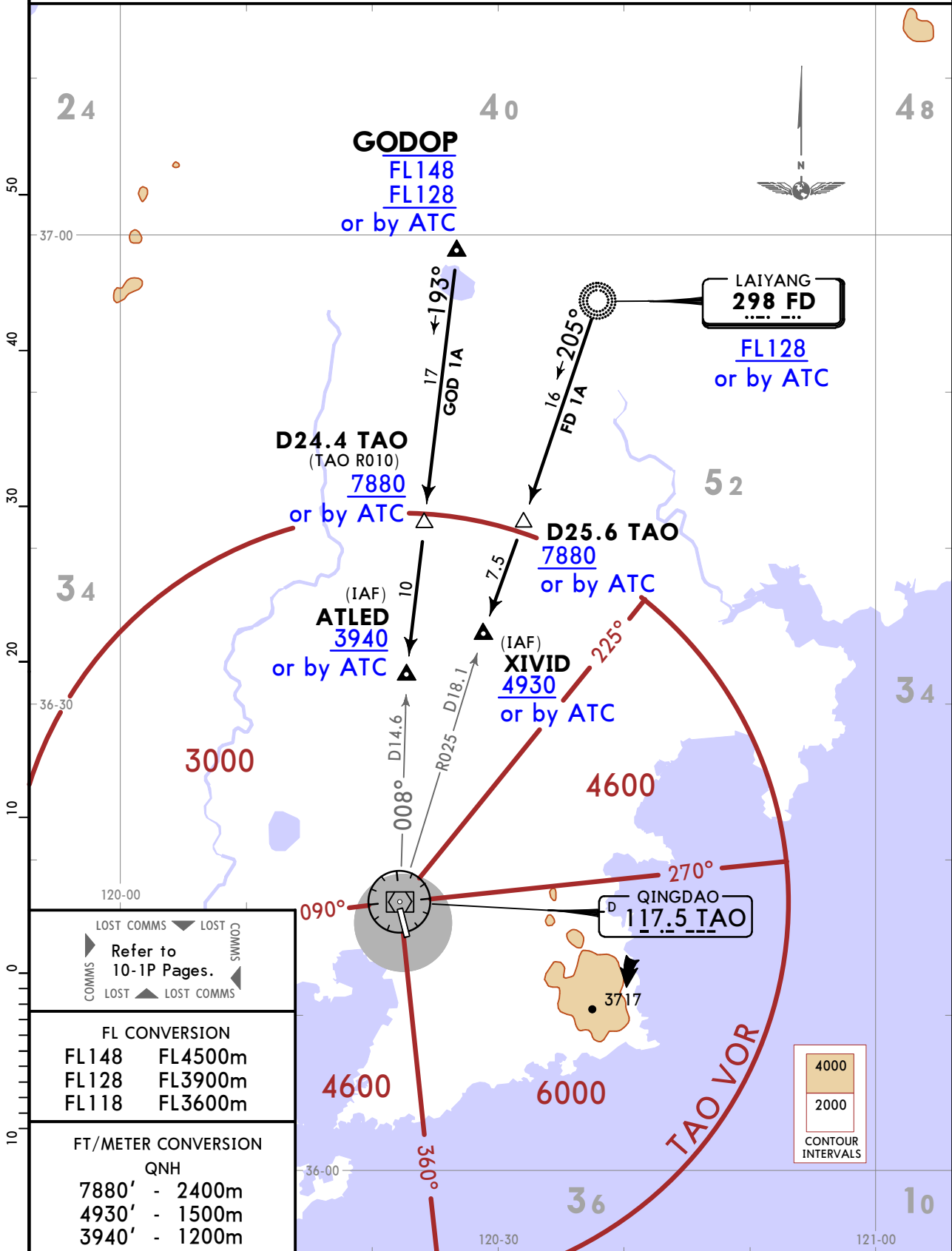
28 FEB 20 (10-2D)

STAR

D-ATIS 127.2	Apt Elev 33	Alt Set: hPa Trans level: FL118
-----------------	----------------	------------------------------------

**FD 1A
GOD 1A
ARRIVALS
(RWY 17)**

SPEED: INITIAL APPROACH MAX 205 KT



ZSQD/TAO
LIUTING

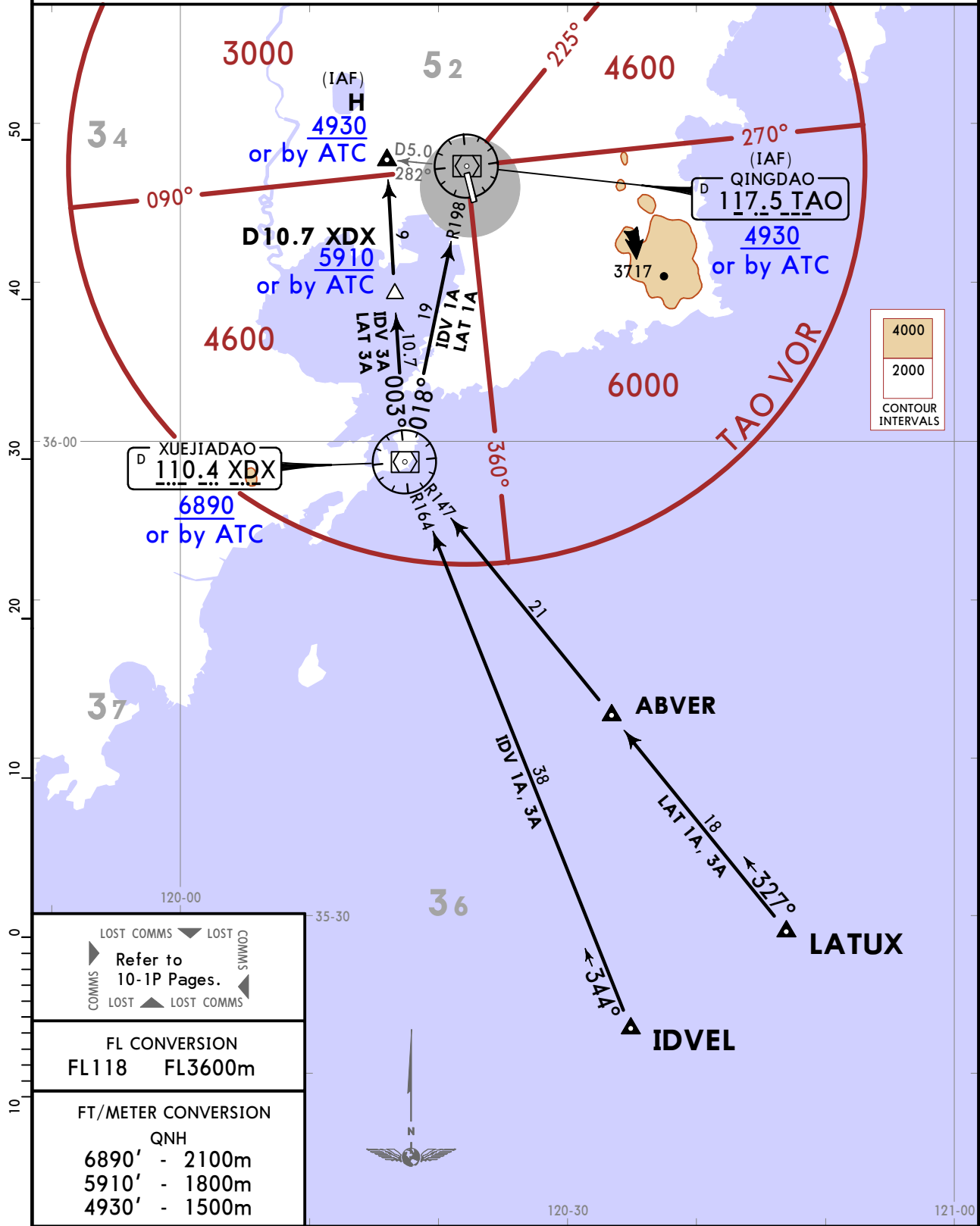
JEPPESSEN QINGDAO, PR OF CHINA

28 FEB 20 **10-2E**

STAR

D-ATIS 127.2	Apt Elev 33	Alt Set: hPa Trans level: FL118
-----------------	----------------	------------------------------------

IDV 1A, LAT 1A
IDV 3A, LAT 3A
BY ATC
ARRIVALS
(RWY 17)
SPEED: INITIAL APPROACH MAX 205 KT



ZSQD/TAO
LIUTING

JEPPESEN QINGDAO, PR OF CHINA

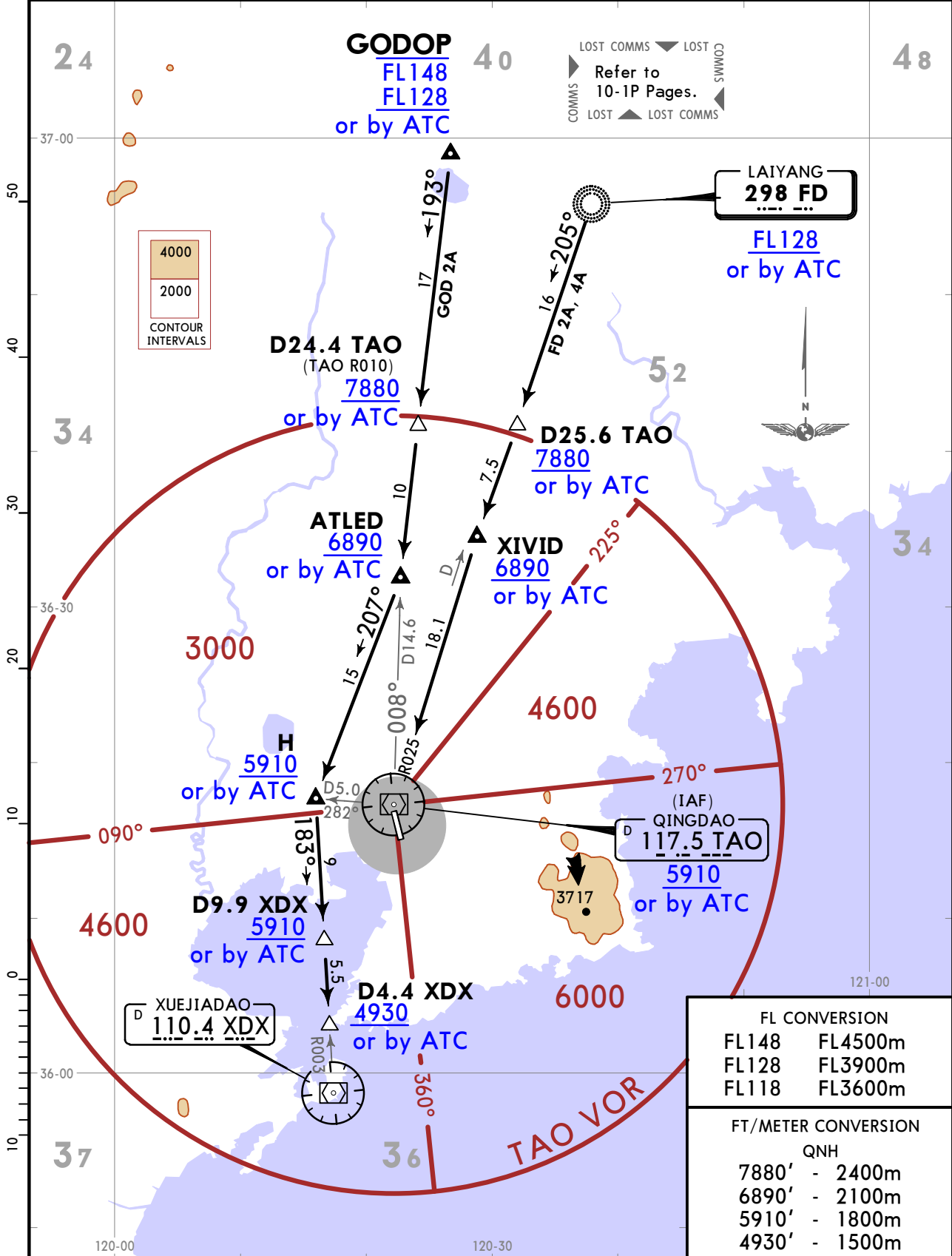
28 FEB 20 **10-2F**

STAR

D-ATIS 127.2	Apt Elev 33	Alt Set: hPa Trans level: FL118
-----------------	----------------	------------------------------------

FD 2A, FD 4A
GOD 2A
ARRIVALS
(RWY 35)

SPEED: INITIAL APPROACH MAX 205 KT



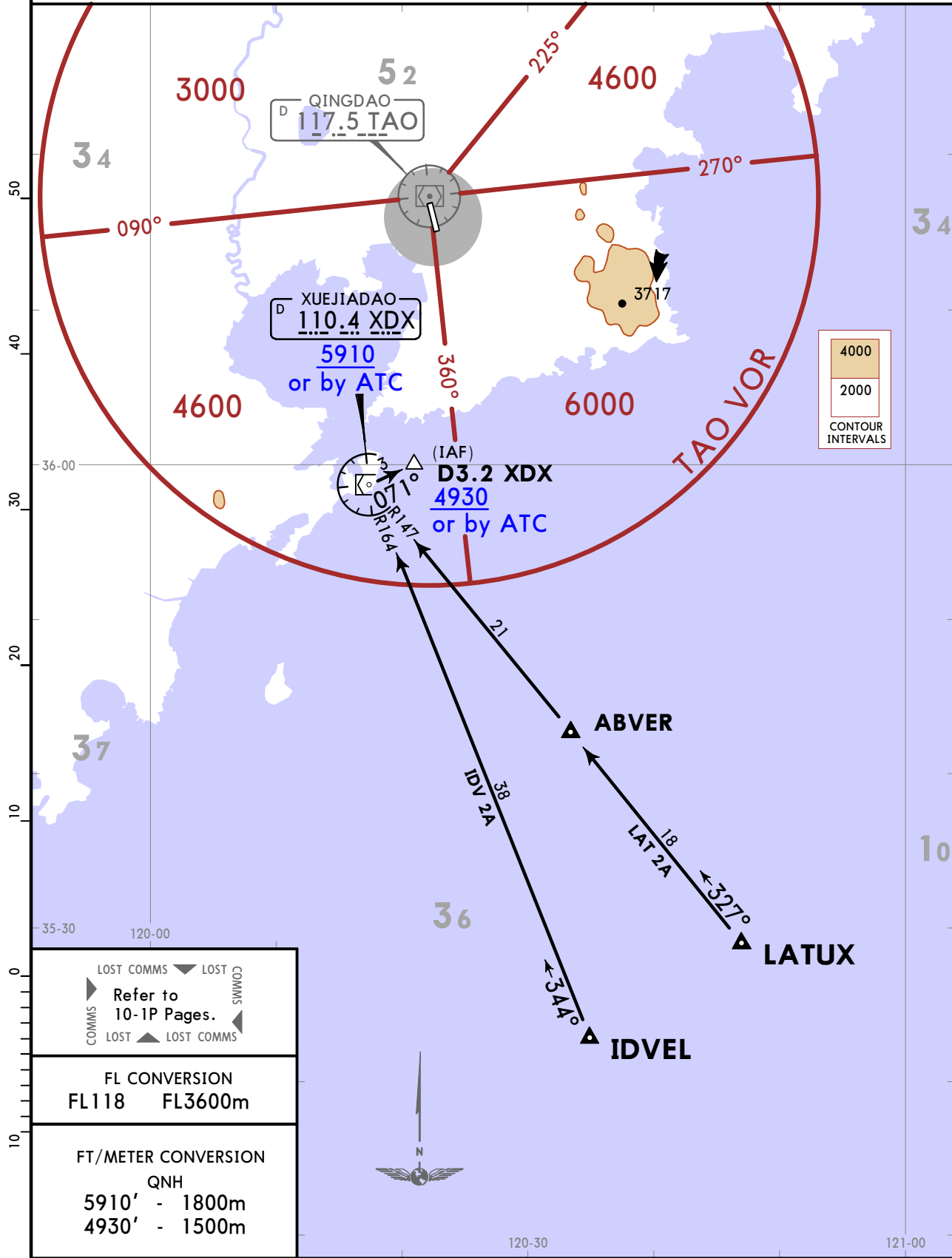
ZSQD/TAO LIUTING

JEPPESEN QINGDAO, PR OF CHINA
28 FEB 20 **(10-2G)** **STAR**

D-ATIS 127.2	Apt Elev 33	Alt Set: hPa Trans level: FL118
-----------------	----------------	------------------------------------

IDV 2A
LAT 2A
ARRIVALS
(RWY 35)

SPEED: INITIAL APPROACH MAX 205 KT



ZSQD/TAO
LIUTING

JEPPESSEN QINGDAO, PR OF CHINA
28 FEB 20 **10-3** **RNAV SID**

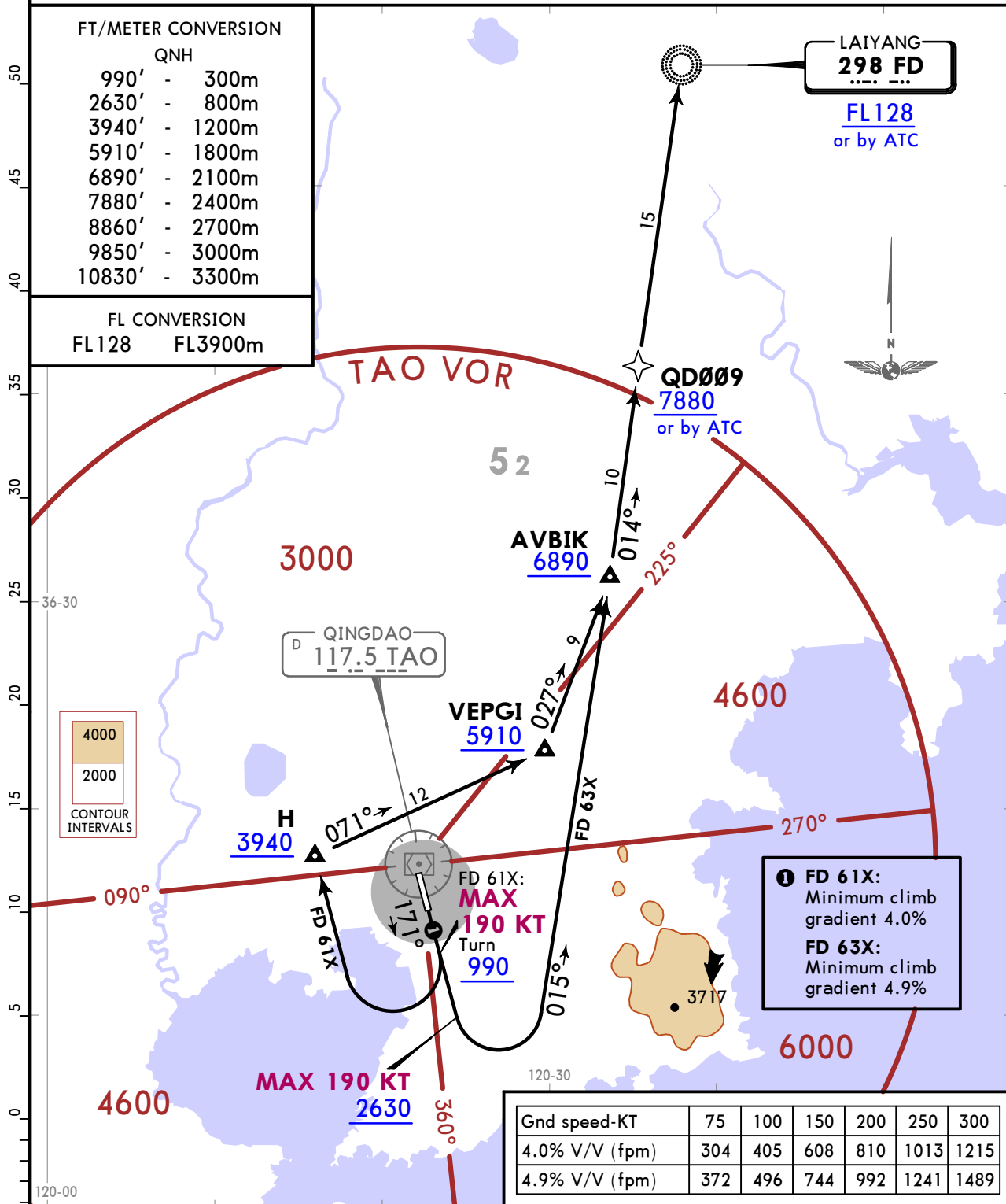
Apt Elev 33	Trans alt: 9850
	10830 - QNH 1031 hPa or above 8860 - QNH 979 hPa or below
	1. RADAR required. 2. GNSS required. 3. RNAV 1.

FD 61X, FD 63X
RNAV DEPARTURES
(RWY 17)

FT/METER CONVERSION

QNH	
990'	300m
2630'	800m
3940'	1200m
5910'	1800m
6890'	2100m
7880'	2400m
8860'	2700m
9850'	3000m
10830'	3300m

FL CONVERSION	
FL128	FL3900m



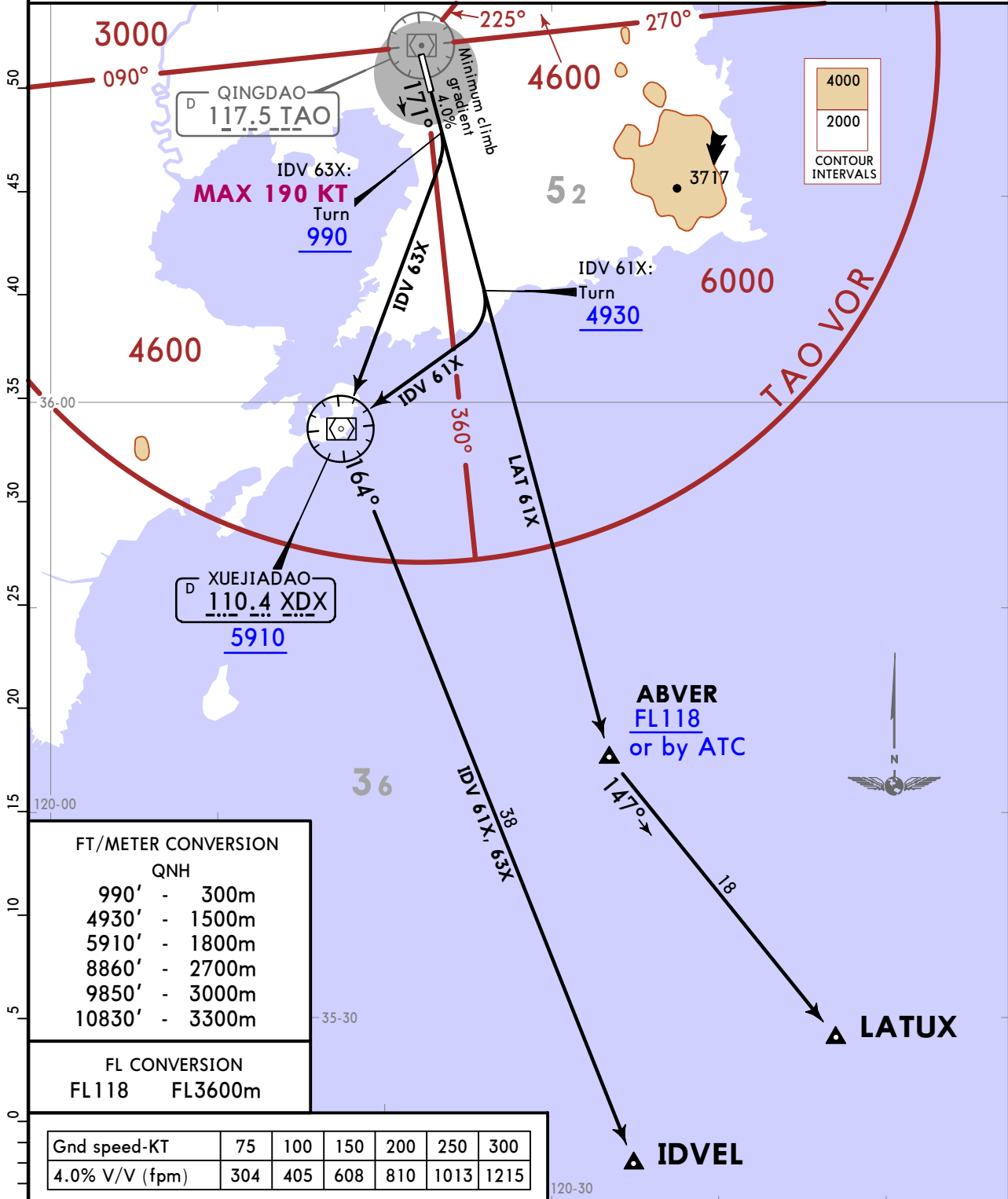
SID	ROUTING
FD 61X	(K190-; 990+) - H (3940+) - VEPGI (5910+) - AVBIK (6890+) - QD009 (7880+ or by ATC) - FD (FL128+ or by ATC).
FD 63X BY ATC	(K190-; 2630+) - AVBIK (6890+) - QD009 (7880+ or by ATC) - FD (FL128+ or by ATC).

ZSQD/TAO
LIUTING

JEPPESSEN QINGDAO, PR OF CHINA
28 FEB 20 **(10-3A)** **RNAV SID**

Apt Elev 33	Trans alt: 9850
	10830 - QNH 1031 hPa or above 8860 - QNH 979 hPa or below
	1. RADAR required. 2. GNSS required. 3. RNAV 1.

**IDV 61X, IDV 63X, LAT 61X
RNAV DEPARTURES
(RWY 17)**



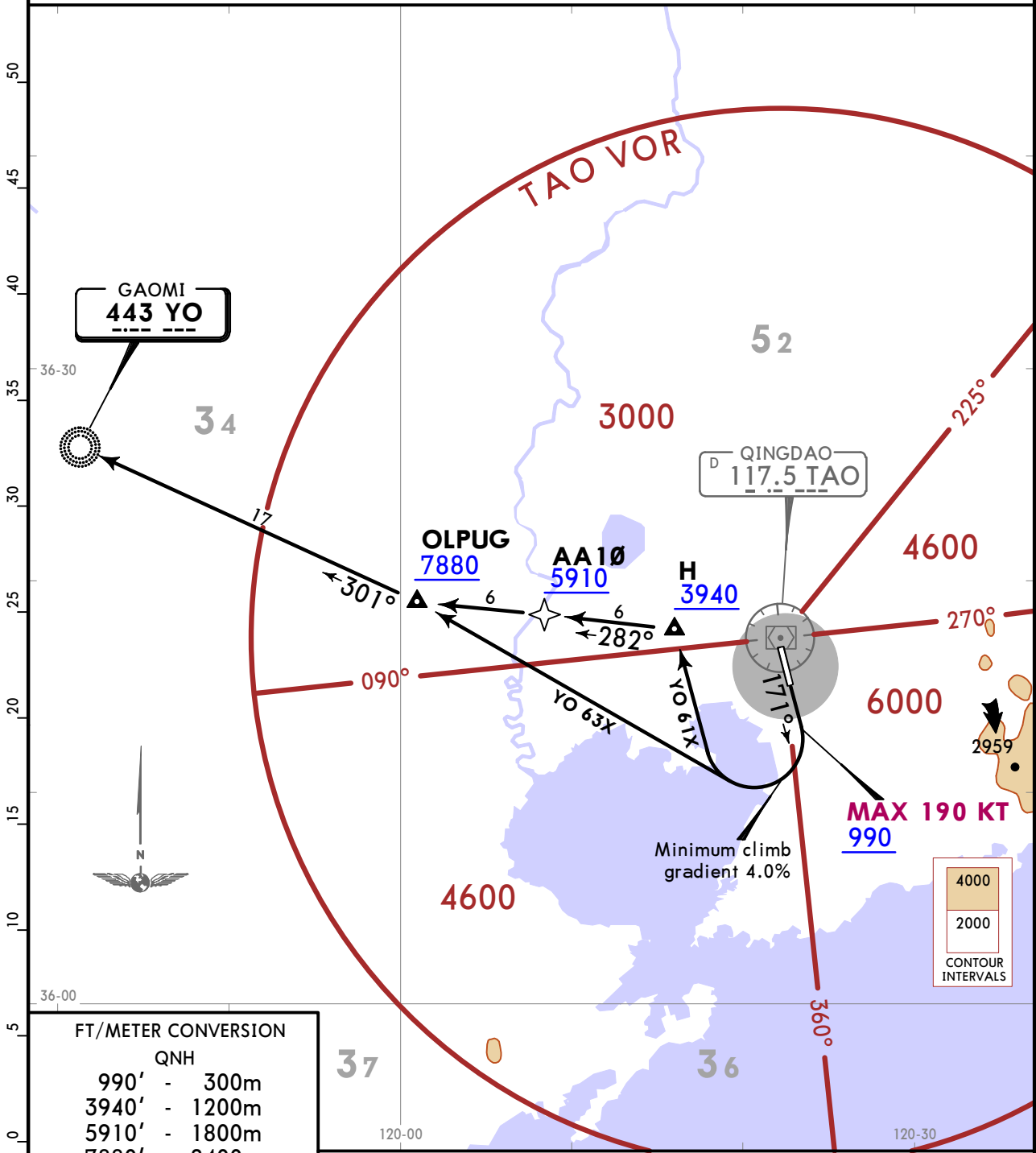
SID	ROUTING
IDV 61X	(4930+) - XDX (5910+) - IDVEL.
IDV 63X BY ATC	(K190-; 990+) - XDX (5910+) - IDVEL.
LAT 61X	(4930+) - ABVER (FL118+ or by ATC) - LATUX.

ZSQD/TAO
LIUTING

JEPPESEN QINGDAO, PR OF CHINA
28 FEB 20 **10-3B** **RNAV SID**

Apt Elev **33**
Trans alt: 9850
10830 - QNH 1031 hPa or above
8860 - QNH 979 hPa or below
1. RADAR required.
2. GNSS required.
3. RNAV 1.

YO 61X, YO 63X
RNAV DEPARTURES
(RWY 17)



FT/METER CONVERSION

	QNH
990'	300m
3940'	1200m
5910'	1800m
7880'	2400m
8860'	2700m
9850'	3000m
10830'	3300m

Gnd speed-KT	75	100	150	200	250	300
4.0% V/V (fpm)	304	405	608	810	1013	1215

SID

ROUTING

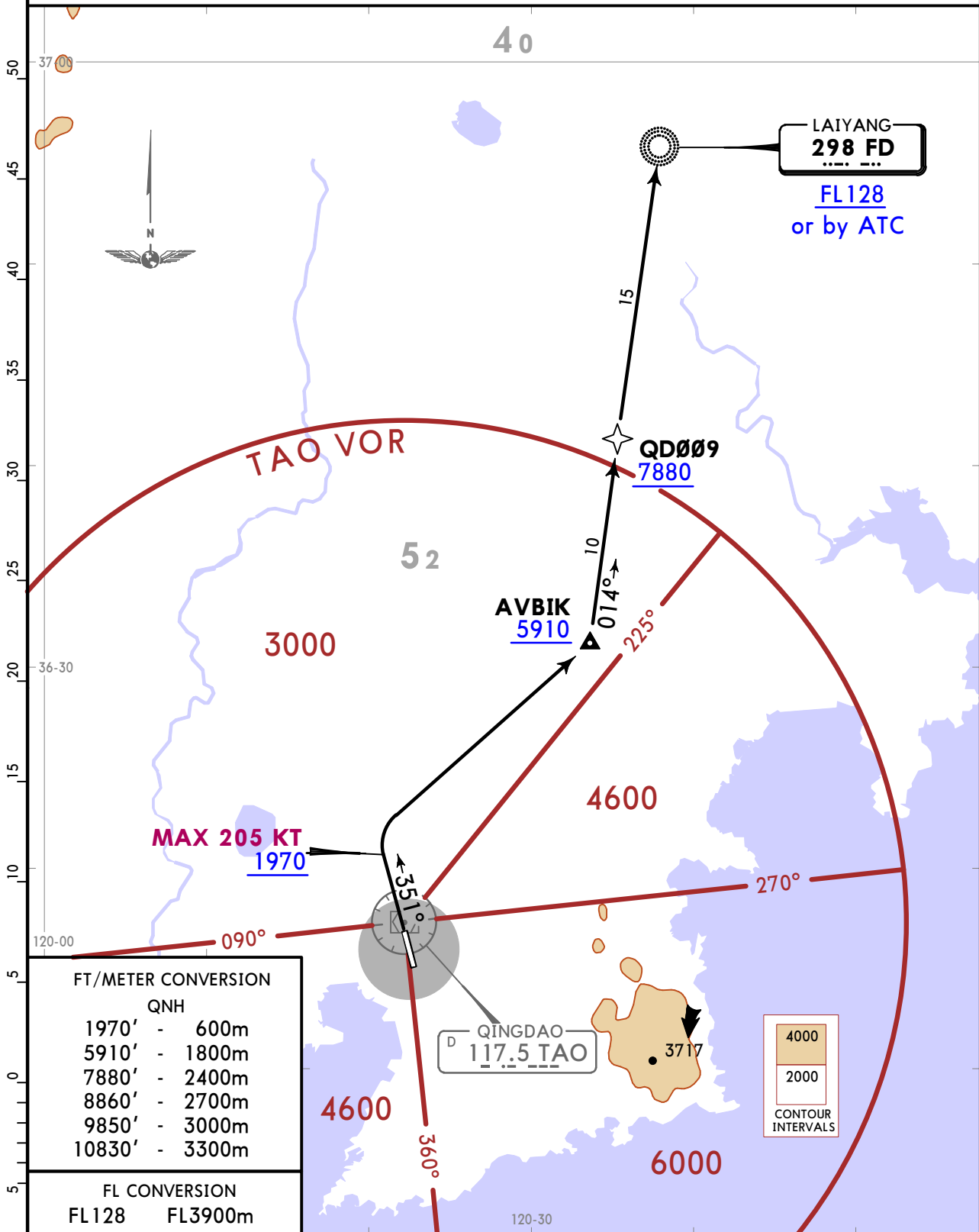
YO 61X	(K190-; 990+) - H (3940+) - AA1Ø (5910+) - OLPUG (7880+) - YO.
YO 63X BY ATC	(K190-; 990+) - OLPUG (7880+) - YO.

ZSQD/TAO
LIUTING

JEPPESEN QINGDAO, PR OF CHINA
28 FEB 20 **10-3C** **RNAV SID**

Apt Elev 33	Trans alt: 9850
	10830 - QNH 1031 hPa or above 8860 - QNH 979 hPa or below
	1. RADAR required. 2. GNSS required. 3. RNAV 1.

FD 62X
RNAV DEPARTURE
(RWY 35)

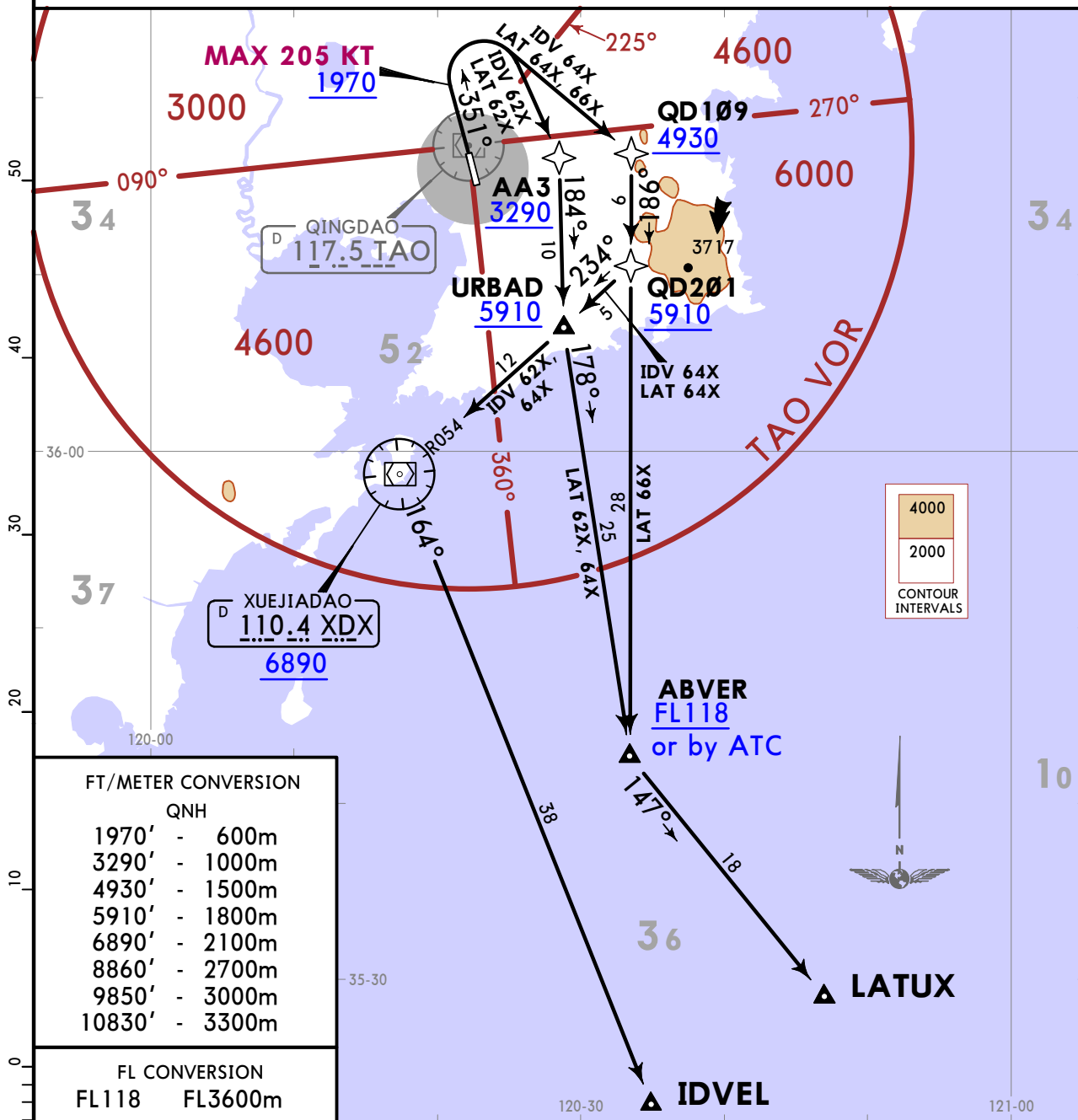


ZSQD/TAO
LIUTING

JEPPESSEN QINGDAO, PR OF CHINA
28 FEB 20 (10-3D) **RNAV SID**

Apt Elev **33**
Trans alt: 9850
10830 - QNH 1031 hPa or above
8860 - QNH 979 hPa or below
1. RADAR required.
2. GNSS required.
3. RNAV 1.

**IDV 62X, IDV 64X
LAT 62X, LAT 64X, LAT 66X
RNAV DEPARTURES
(RWY 35)**



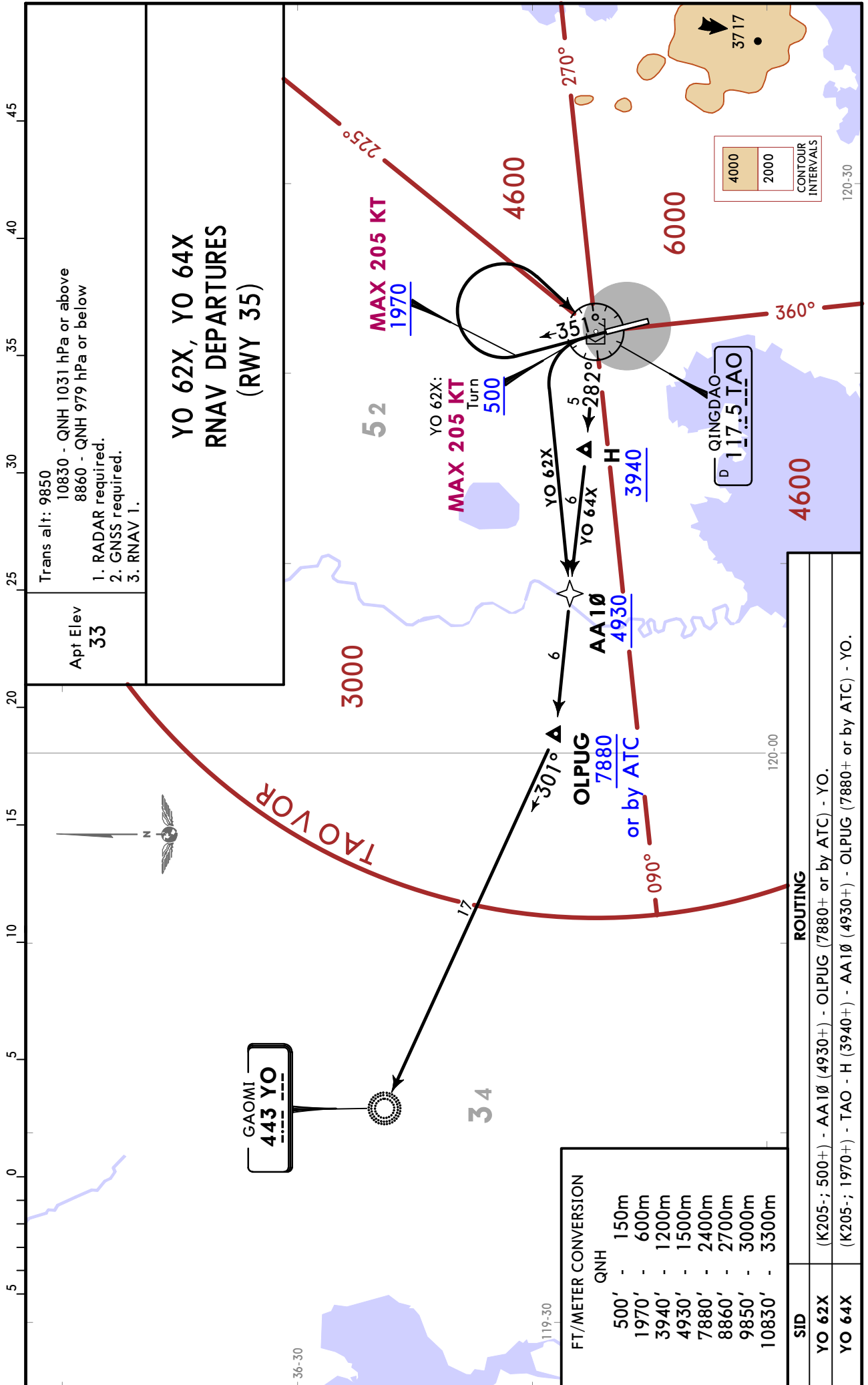
SID	ROUTING
IDV 62X	(K205-; 1970+) - AA3 (3290+) - URBAD (5910+) - XDX (6890+) - IDVEL.
IDV 64X BY ATC	(K205-; 1970+) - QD109 (4930+) - QD201 (5910+) - URBAD (5910+) - XDX (6890+) - IDVEL.
LAT 62X	(K205-; 1970+) - AA3 (3290+) - URBAD (5910+) - ABVER (FL118+ or by ATC) - LATUX.
LAT 64X BY ATC	(K205-; 1970+) - QD109 (4930+) - QD201 (5910+) - URBAD (5910+) - ABVER (FL118+ or by ATC) - LATUX.
LAT 66X BY ATC	(K205-; 1970+) - QD109 (4930+) - QD201 (5910+) - ABVER (FL118+ or by ATC) - LATUX.

ZSQD/TAO
LIUTING

JEPPESSEN
28 FEB 20 10-3E

QINGDAO, PR OF CHINA

RNAV SID



CHANGES: New format (chart reindexed).

© JEPPESSEN, 2020. ALL RIGHTS RESERVED.

ZSQD/TAO
LIUTING

JEPPESEN QINGDAO, PR OF CHINA
28 FEB 20 **10-3F** **SID**

Apt Elev 33	Trans alt: 9850
	10830 - QNH 1031 hPa or above
	8860 - QNH 979 hPa or below

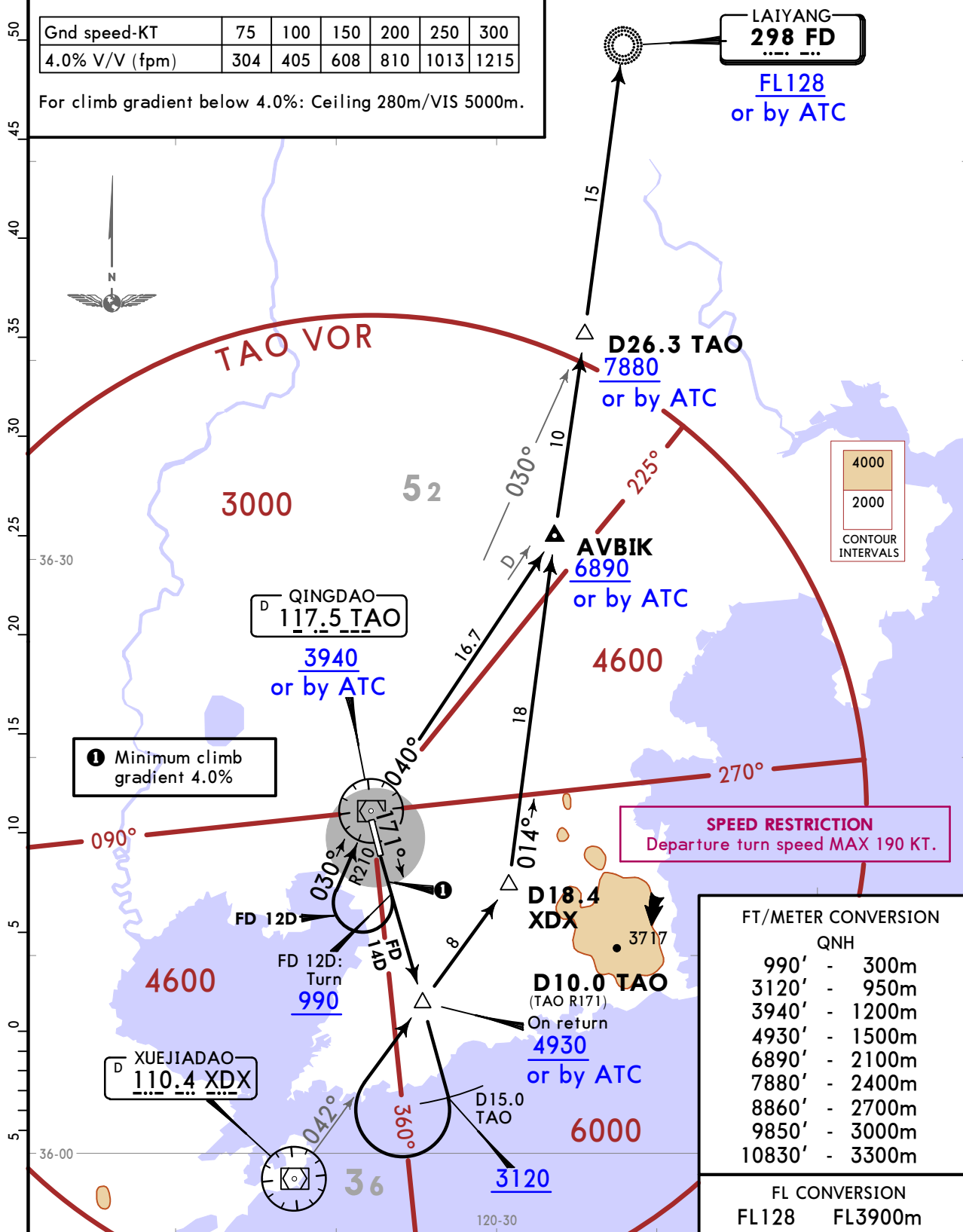
FD 12D

FD 14D
BY ATC

DEPARTURES
(RWY 17)

Gnd speed-KT	75	100	150	200	250	300
4.0% V/V (fpm)	304	405	608	810	1013	1215

For climb gradient below 4.0%: Ceiling 280m/VIS 5000m.



FT/METER CONVERSION	
QNH	
990'	300m
3120'	950m
3940'	1200m
4930'	1500m
6890'	2100m
7880'	2400m
8860'	2700m
9850'	3000m
10830'	3300m

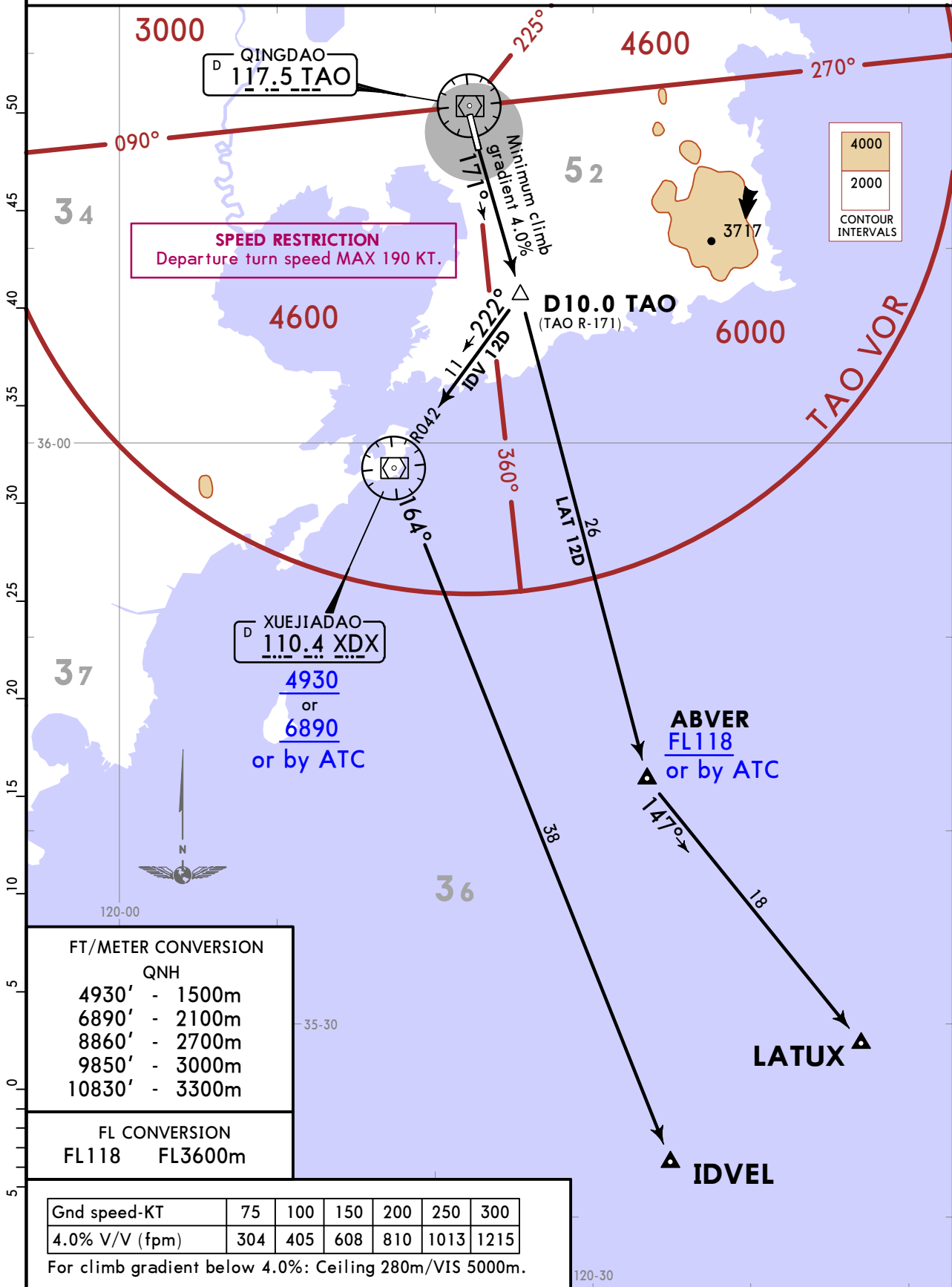
FL CONVERSION	
FL128	FL3900m

ZSQD/TAO
LIUTING

JEPPESSEN QINGDAO, PR OF CHINA
28 FEB 20 (10-3G) **SID**

Apt Elev 33	Trans alt: 9850 10830 - QNH 1031 hPa or above 8860 - QNH 979 hPa or below
-----------------------	---

IDV 12D
LAT 12D
DEPARTURES
(RWY 17)

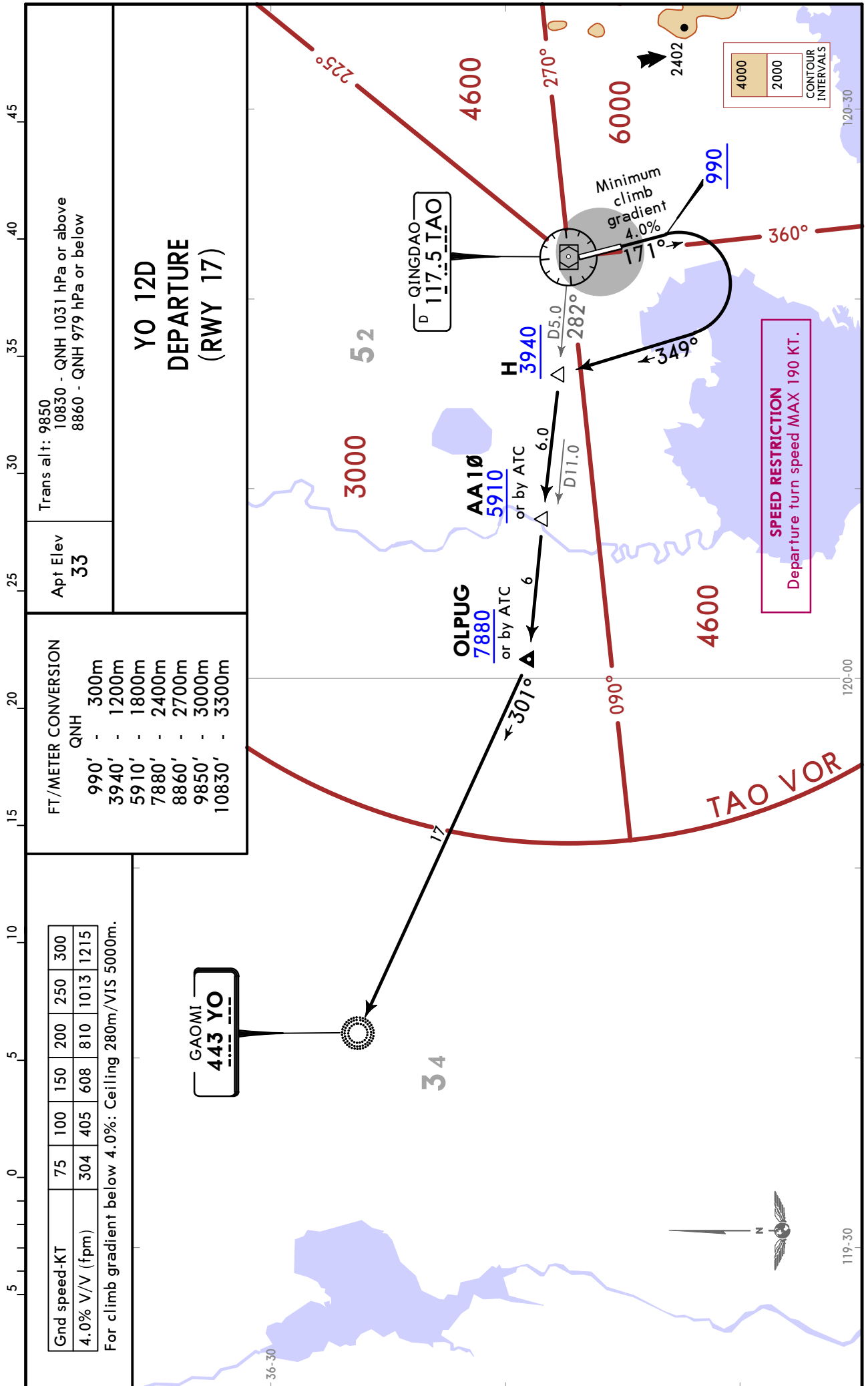


ZSQD/TAO LIUTING

28 FEB 20 **10-3H**

QINGDAO, PR OF CHINA

SID

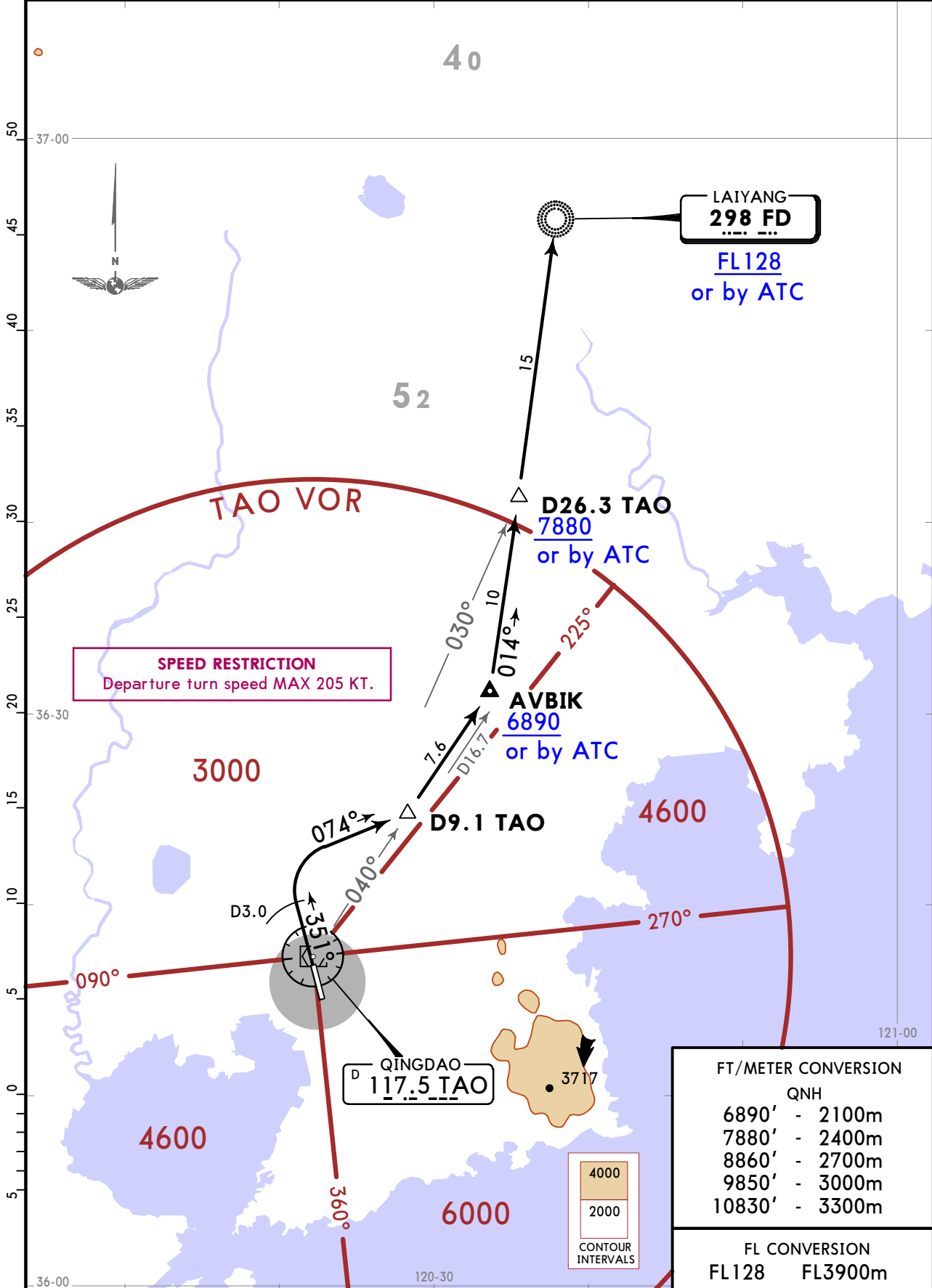


ZSQD/TAO
LIUTING

JEPPESEN QINGDAO, PR OF CHINA
28 FEB 20 (10-3J) **SID**

Apt Elev 33	Trans alt: 9850 10830 - QNH 1031 hPa or above 8860 - QNH 979 hPa or below
-----------------------	---

**FD 11D
DEPARTURE
(RWY 35)**

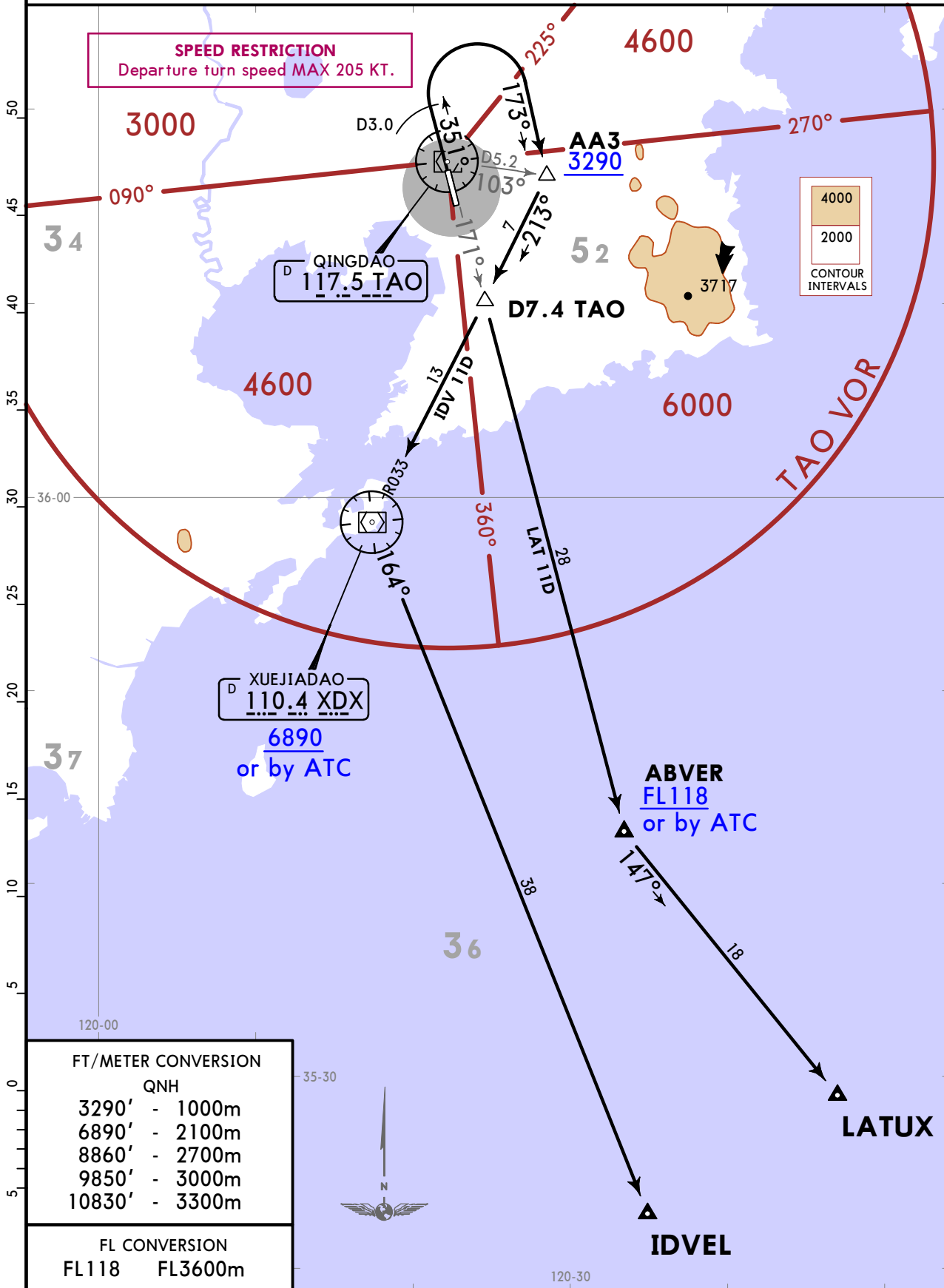


ZSQD/TAO
LIUTING

JEPPESEN QINGDAO, PR OF CHINA
28 FEB 20 (10-3K) **SID**

Apt Elev 33	Trans alt: 9850 10830 - QNH 1031 hPa or above 8860 - QNH 979 hPa or below
-----------------------	---

IDV 11D
LAT 11D
DEPARTURES
(RWY 35)



CHANGES: New chart.

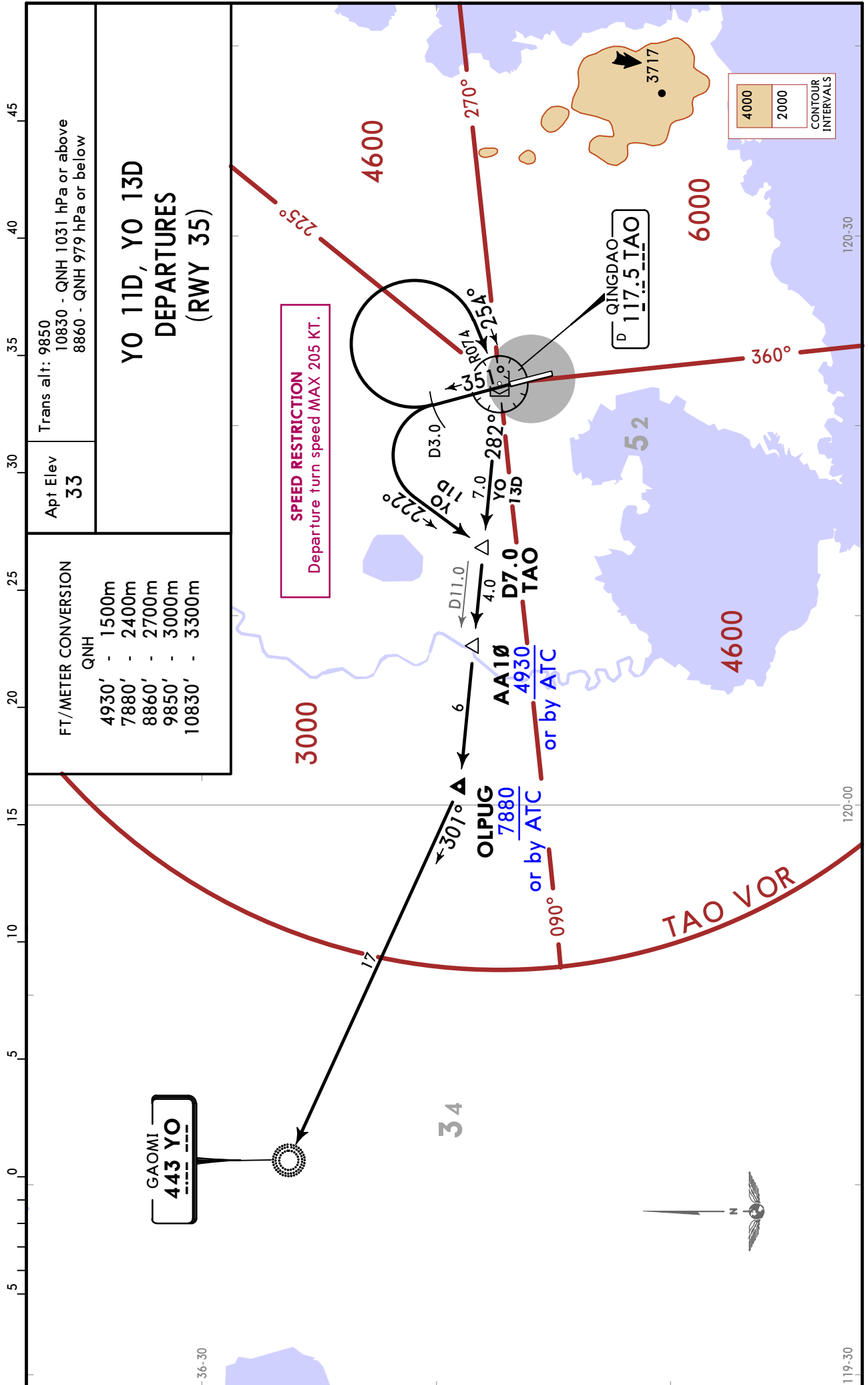
© JEPPESEN, 2020. ALL RIGHTS RESERVED.

ZSQD/TAO LIUTING

28 FEB 20 10-3L

QINGDAO, PR OF CHINA

SID



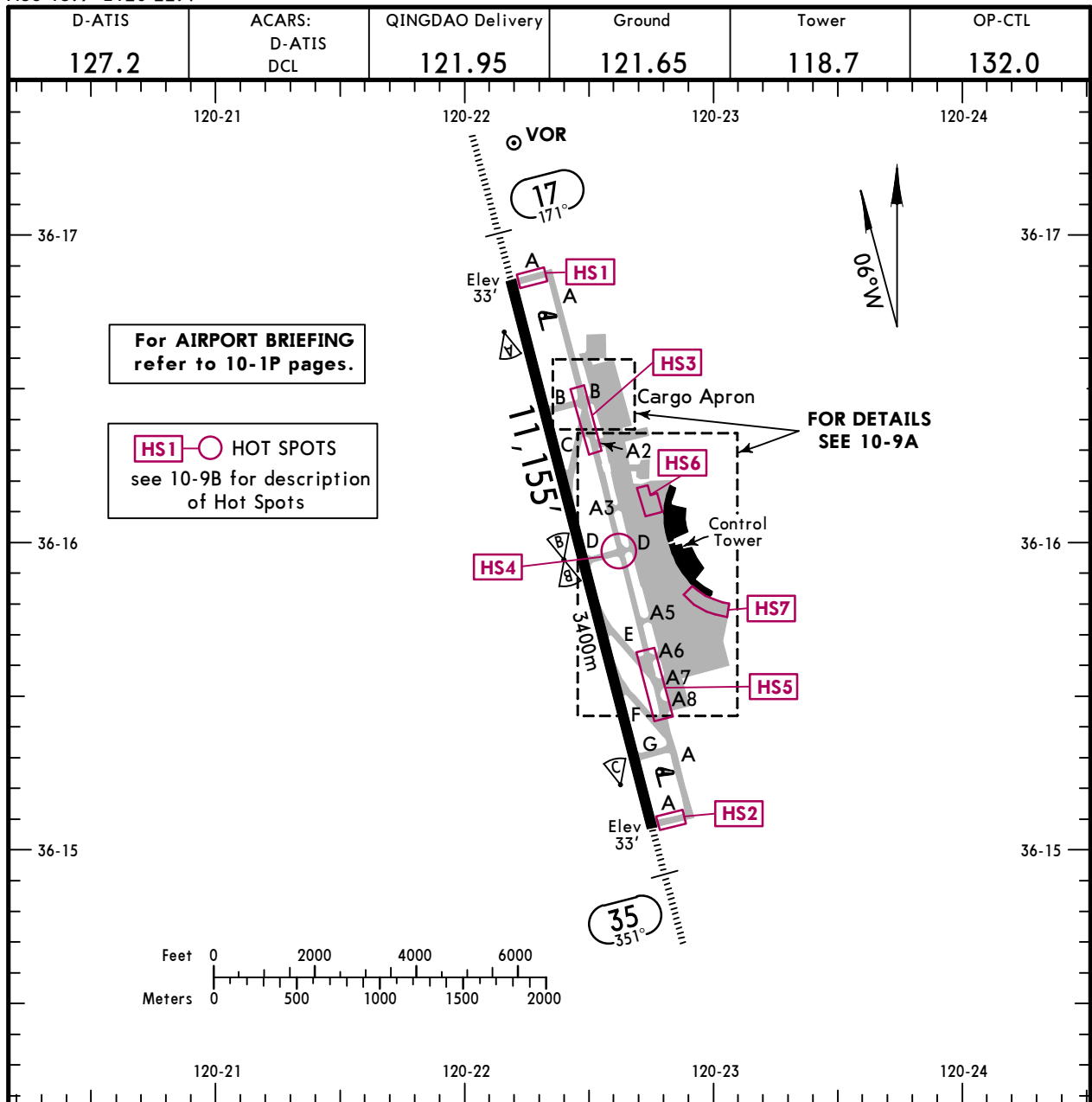
ZSQD/TAO

Apt Elev **33'**
N36 15.9 E120 22.4

JEPPESSEN QINGDAO, PR OF CHINA

2 OCT 20 **(10-9)** Eff 7 Oct 1600Z

LIUTING



ADDITIONAL RUNWAY INFORMATION

RWY	USABLE LENGTHS	LANDING BEYOND	TAKE-OFF	WIDTH
17 35	HIRL(60m) CL(30m) HIALS SFL PAPI-L (3.0°) RVR	10,135' 3089m 10,148' 3093m		148' 45m

--	--

Standard	TAKE-OFF 1
RL	NIL (DAY only)
A	
B	RVR 500m
C	VIS 800m
D	RVR 400m VIS 800m

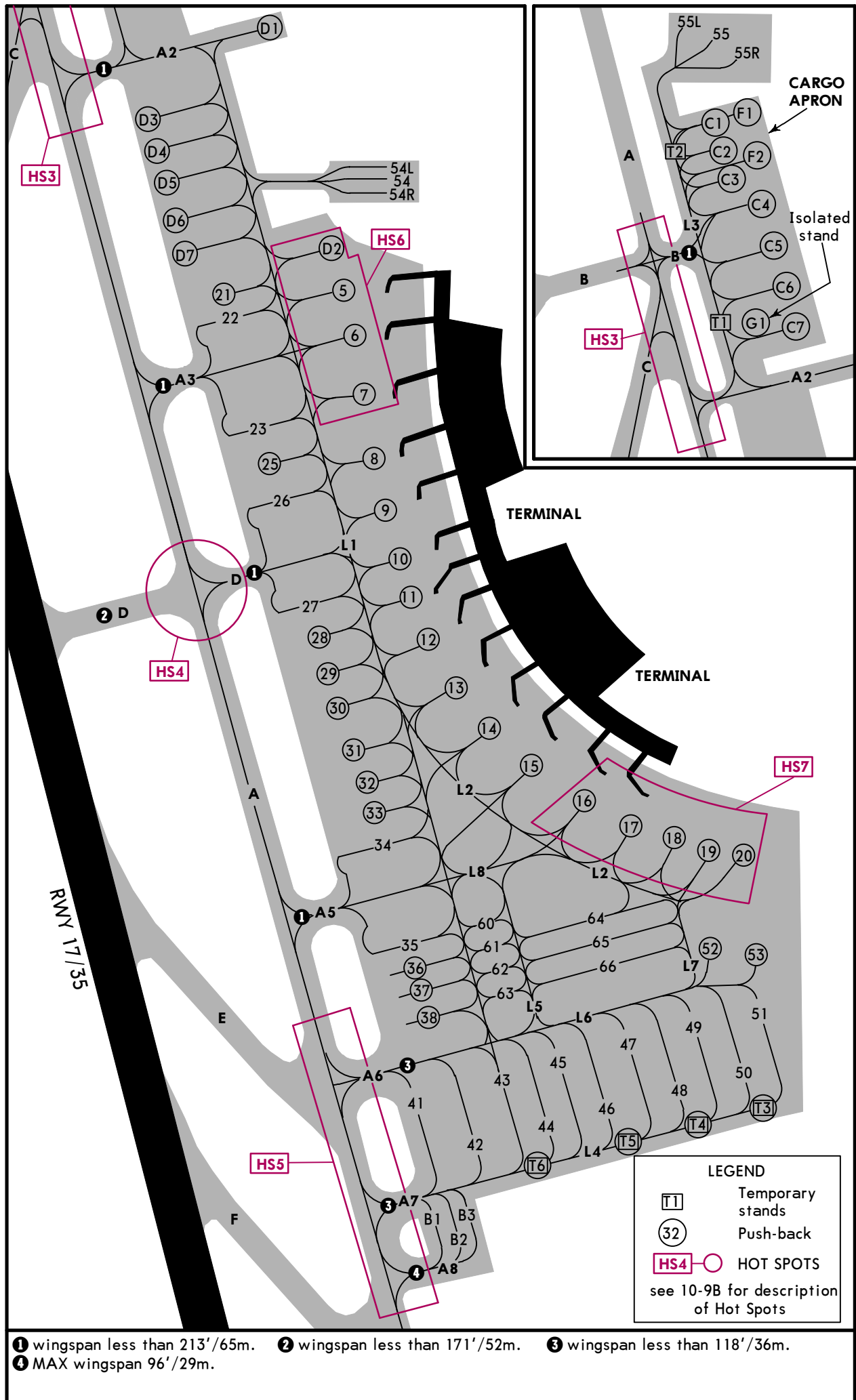
1 Rwy 17: Ceiling 280m, VIS 5 km, if climb gradient is less than 4.0%.

ZSQD/TAO

JEPPESSEN QINGDAO, PR OF CHINA

2 OCT 20 **(10-9A)** Eff 7 Oct 1600Z

LIUTING



- 1** wingspan less than 213'/65m. **2** wingspan less than 171'/52m. **3** wingspan less than 118'/36m.
- 4** MAX wingspan 96'/29m.

LEGEND

- T1 Temporary stands
- 32 Push-back
- HS4 ○ HOT SPOTS

see 10-9B for description of Hot Spots

HOT SPOT PROCEDURES

For information only, not to be construed as ATC instructions.

For the purpose of reducing errors that lead to ground conflicts and runway incursions, aircraft operating within the maneuvering area of Qingdao airport must follow the requirements below:

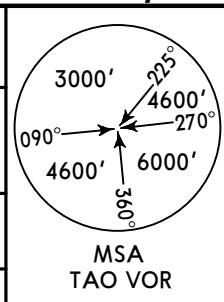
- HS1** Runway 17/35 ILS Protected Area:
& Aircraft taxiing from apron will be instructed to hold short of ILS protected area outside rwy holding positions when rwy 17/35 is in use. In that case, aircraft shall not proceed beyond rwy holding positions without ATC clearance.
- HS2**
- HS3** Intersections of Taxiways A2, B, C:
Aircraft exiting out of apron via Twy A, B and A2 shall pay attention to ATC holding or taxiing instructions before entering this area.
- HS4** Intersections of Taxiways A and D:
Aircraft taxiing on main Twy A shall pay attention to ATC holding or taxiing instructions before entering this area.
- HS5** Intersections of Taxiways A6, A7, A8 and E:
Aircraft exiting out of apron via Twy A6 and A7 shall pay attention to ATC holding or taxiing instructions before entering this area.
Aircraft taxiing into Stands B1 thru B3 on main Twy A shall use Twy A8 only.
Crew shall pay attention to avoid taxiing into apron from Twy A7 by mistake.
Aircraft taxiing on main Twy A shall pay attention to ATC holding or taxiing instructions before entering this area.
- HS6** Area of Stands Nr.5 thru 7 and D2:
Stand 5 and 7 are mainly used for havy Aircraft. Airport service lane is between Stand 5 and 7.
Aircraft shall pay attention to ATC holding or taxiing instructions before entering this area and keep observing.
- HS7** Area of Stands Nr.16 thru 20:
Stands 16 thru 20 are located at Control TWR blind area.
Aircraft shall pay attention to ATC holding or taxiing instructions before entering this area and keep observing.

ZSQD/TAO LIUTING

19 MAY 17 (11-1)

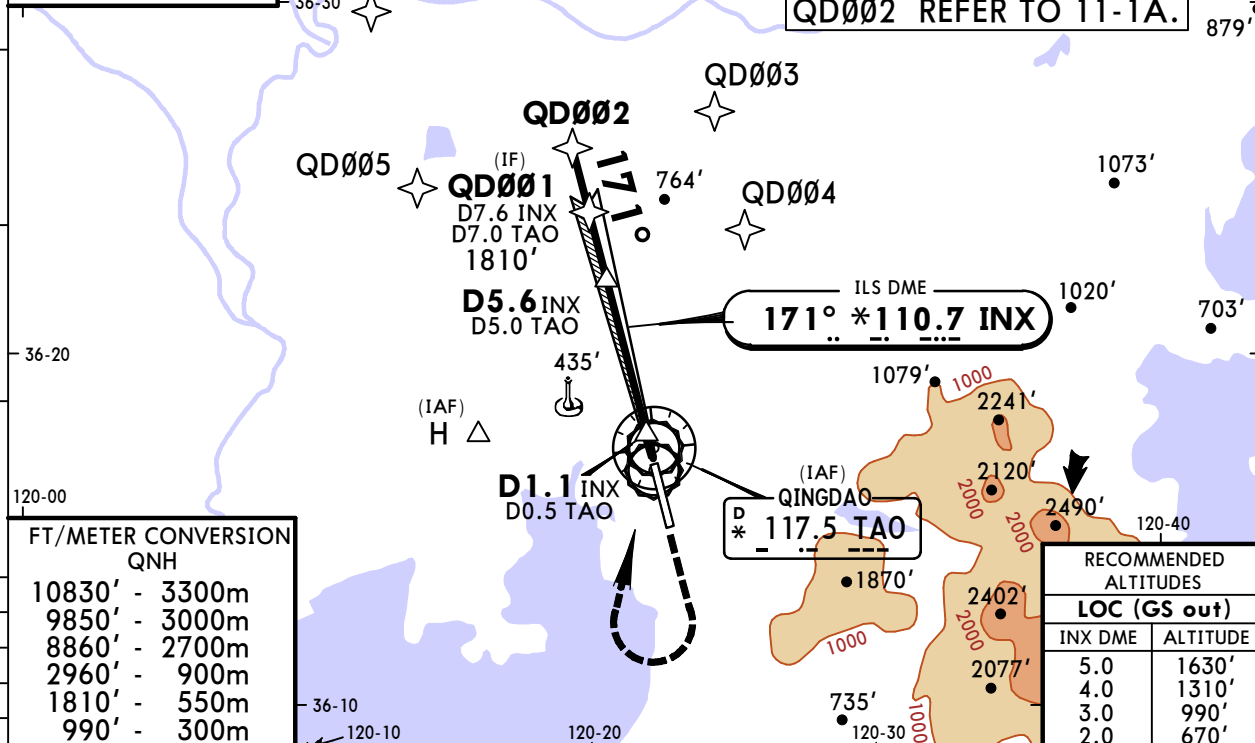
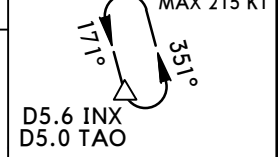
QINGDAO, PR OF CHINA RNAV ILS DME Z Rwy 17

D-ATIS 127.2	AP01 119.4	QINGDAO Approach(R) *AP02 121.15	*AP03 119.775	QINGDAO Tower 118.7	Ground 121.65
LOC INX *110.7	Final Apch Crs 171°	GS D5.6 INX 1810'(1777')	ILS DA(H) Refer to Minimums	Apt Elev 33' Rwy 33'	



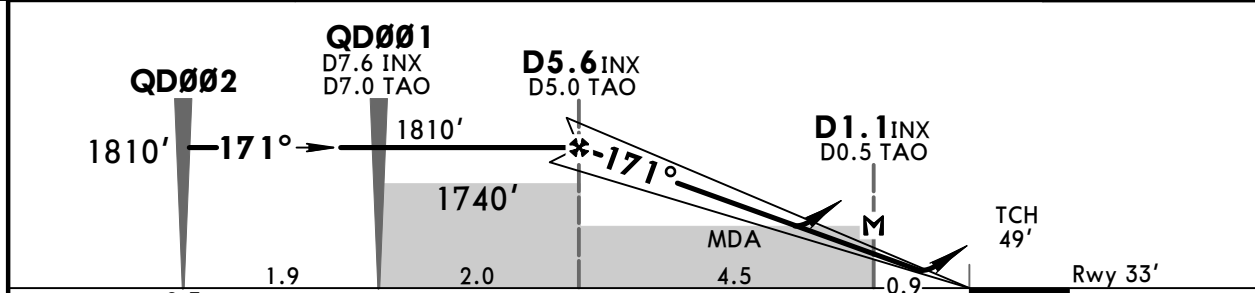
MISSED APCH: Climb STRAIGHT AHEAD to 990', then turn RIGHT (MAX 190 KT) to reach VOR at 2960', or as directed.

Alt Set: hPa Rwy Elev: 1 hPa Trans level: FL 118 Trans alt: 9850' ①



FT/METER CONVERSION QNH	
10830'	3300m
9850'	3000m
8860'	2700m
2960'	900m
1810'	550m
990'	300m

RECOMMENDED ALTITUDES	
LOC (GS out)	
INX DME	ALTITUDE
5.0	1630'
4.0	1310'
3.0	990'
2.0	670'



Gnd speed-Kts	70	90	100	120	140	160	HIALS	990'	190 KT	TAO	2960'
ILS GS or LOC Descent Angle 3.00°	372	478	531	637	743	849	PAPI	↑	MAX	117.5	↑
MAP at D1.1 INX/D0.5 TAO											

PANS OPS	STRAIGHT-IN LANDING						LOC (GS out)		CIRCLE-TO-LAND	
	MISSED APCH CLIMB grad mim 3.0%			MISSED APCH CLIMB grad mim 2.5%			CDFA		Not authorized East of runway	
	DA(H) 233'(200')			DA(H) AB: 263'(230') CD: 279'(246')			MDA(H) 460'(427')			
	FULL	Limited	ALS out	FULL	Limited	ALS out	ALS out	ALS out	Max Kts	MDA(H) VIS
A								100	860'(827') 2800m	
B								135	860'(827') 3200m	
C	RVR 550m VIS 800m	RVR 750m VIS 800m	1200m	RVR 600m VIS 800m	RVR 750m VIS 800m	1200m		180	1150'(1117') 4400m	
D								205	1150'(1117') 5000m	

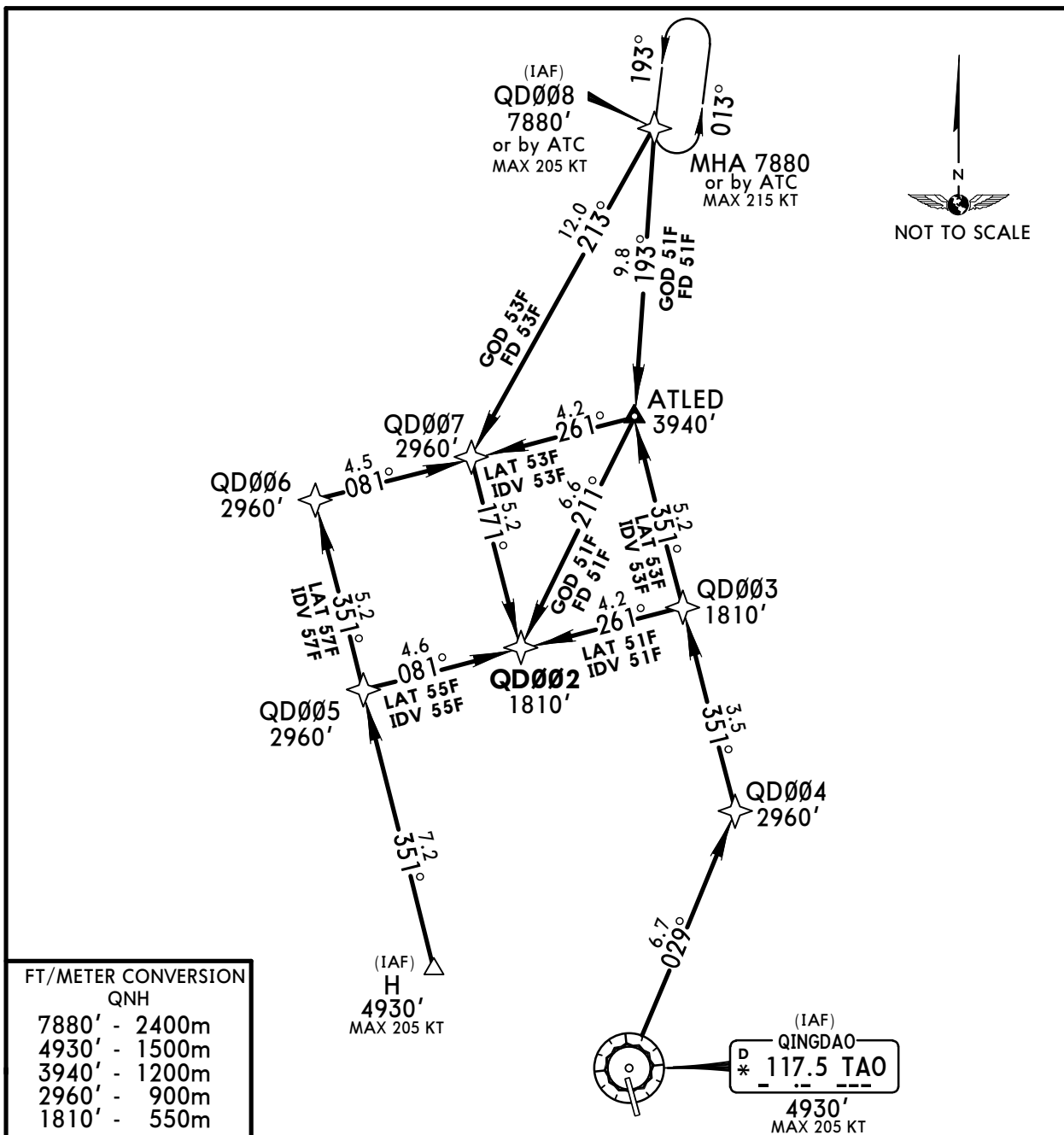
CHANGES: None.

ZSQD/TAO

JEPPESSEN
19 MAY 17 11-1A

QINGDAO, PR OF CHINA
RNAV TRANSITIONS TO
RNAV ILS DME Z RWY 17

LIUTING



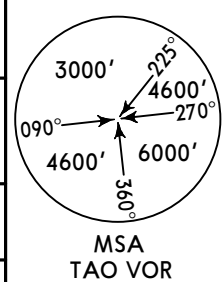
TRANSITION	ROUTING
GOD 51F	QD0008 (7880' or by ATC) - ATLED (3940'+) - QD0002 (1810'+).
GOD 53F (by ATC)	QD0008 (7880' or by ATC) - QD0007 (2960'+) - QD0002 (1810'+).
FD 51F	QD0008 (7880' or by ATC) - ATLED (3940'+) - QD0002 (1810'+).
FD 53F (by ATC)	QD0008 (7880' or by ATC) - QD0007 (2960'+) - QD0002 (1810'+).
IDV 51F	TAO VOR (4930') - QD0004 (2960'+) - QD0003 (1810'+) - QD0002 (1810'+).
IDV 53F (by ATC)	TAO VOR (4930') - QD0004 - ATLED (3940'+) - QD0007 (2960'+) - QD0002 (1810'+).
IDV 55F (by ATC)	H (4930') - QD0005 (2960'+) - QD0002 (1810'+).
IDV 57F (by ATC)	H (4930') - QD0006 (2960'+) - QD0007 (2960'+) - QD0002 (1810'+).
LAT 51F	TAO VOR (4930') - QD0004 (2960'+) - QD0003 (1810'+) - QD0002 (1810'+).
LAT 53F (by ATC)	TAO VOR (4930') - QD0004 - ATLED (3940'+) - QD0007 (2960'+) - QD0002 (1810'+).
LAT 55F (by ATC)	H (4930') - QD0005 (2960'+) - QD0002 (1810'+).
LAT 57F (by ATC)	H (4930') - QD0006 (2960'+) - QD0007 (2960'+) - QD0002 (1810'+).

ZSQD/TAO LIUTING

24 FEB 17
Eff 1 Mar 1600Z (11-2)

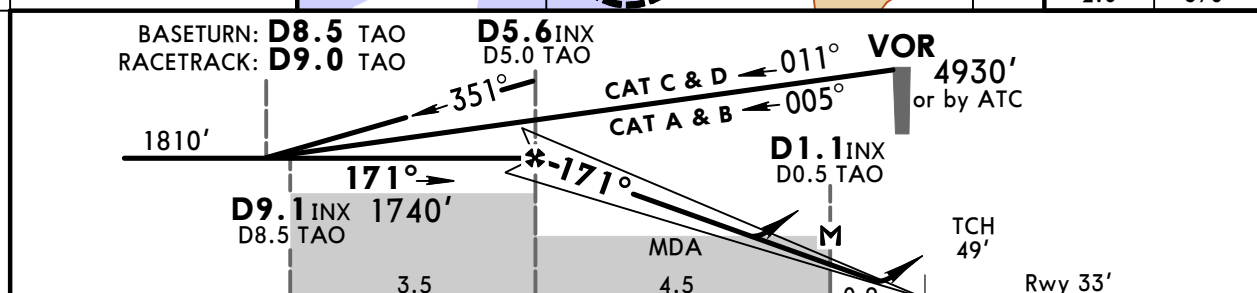
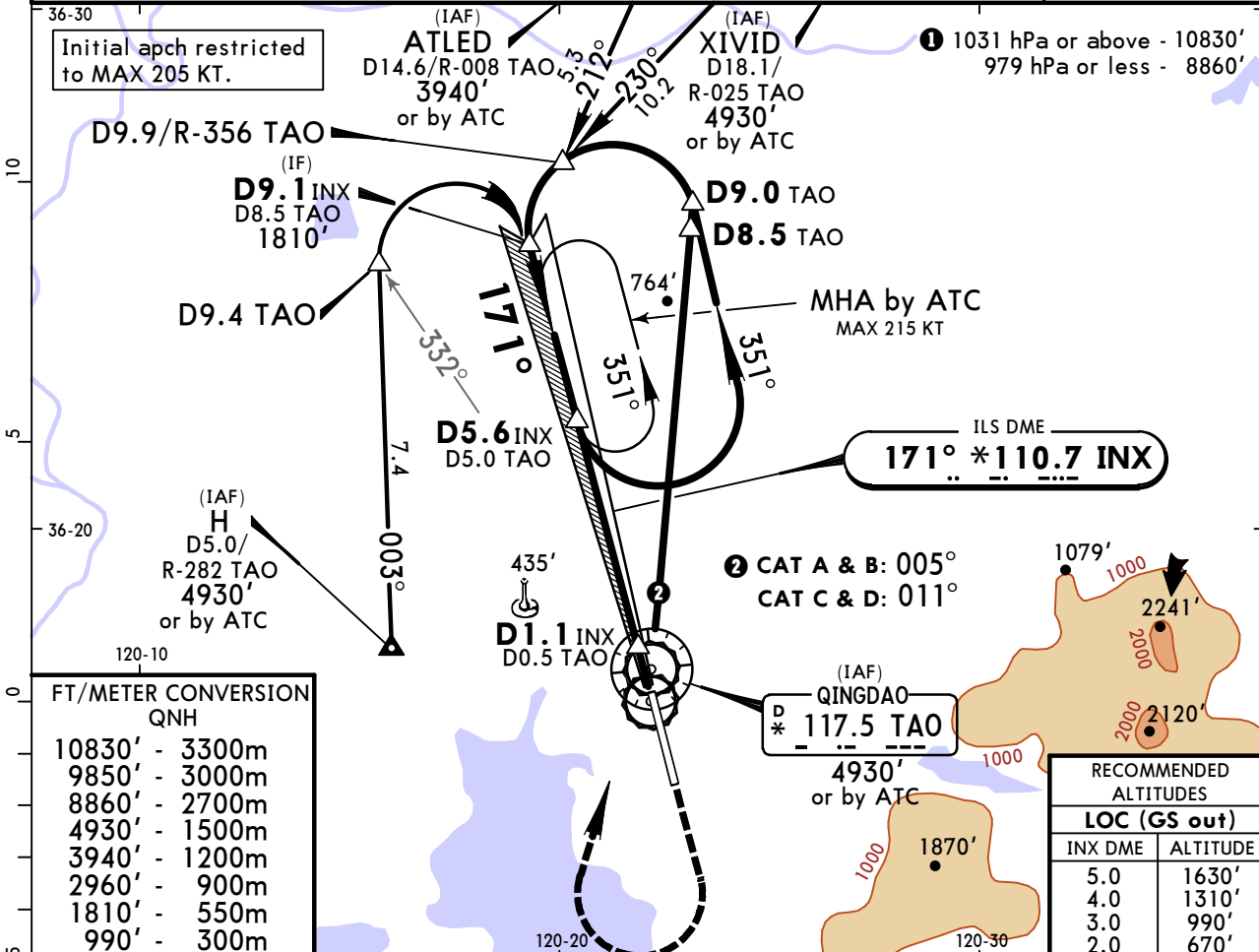
JEPPESSEN QINGDAO, PR OF CHINA ILS DME Y Rwy 17

D-ATIS 127.2	AP01 119.4	QINGDAO Approach(R) *AP02 121.15	*AP03 119.775	QINGDAO Tower 118.7	Ground 121.65
LOC INX *110.7	Final Apch Crs 171°	GS D5.6 INX 1810'(1777')	ILS DA(H) Refer to Minimums	Apt Elev 33' Rwy 33'	



MISSED APCH: Climb STRAIGHT AHEAD to 990', then turn RIGHT (MAX 190 KT) to reach VOR at 2960', or as directed.

Alt Set: hPa Rwy Elev: 1 hPa Trans level: FL 118 Trans alt: 9850' ①



Gnd speed-Kts	70	90	100	120	140	160	HIALS	990'	190 KT	TAO	2960'
ILS GS or LOC Descent Angle	3.00°	372	478	531	637	743	PAPI	↑	MAX	117.5	↑
MAP at D1.1 INX/D0.5 TAO	0.9										

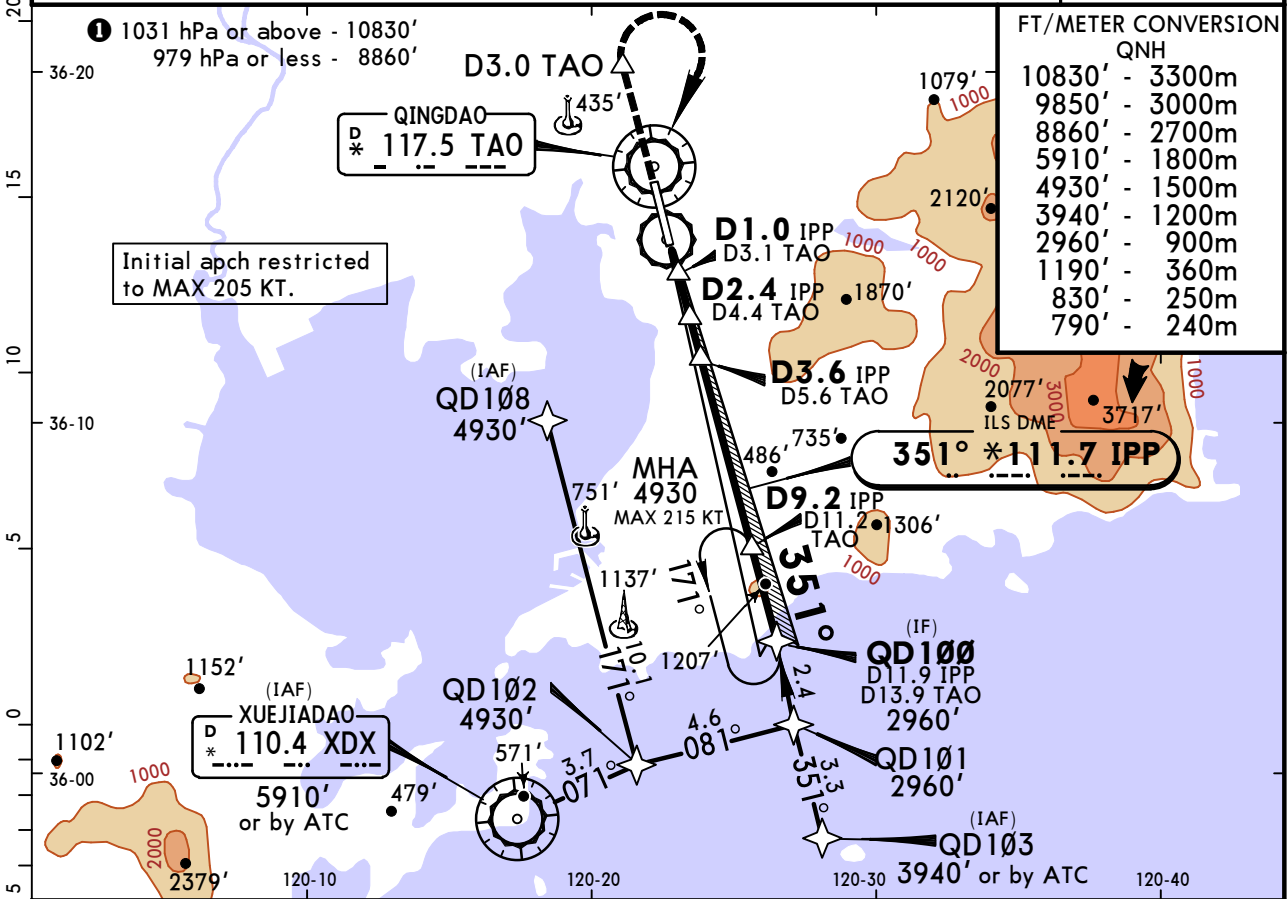
PANS OPS	STRAIGHT-IN LANDING ILS						LOC (GS out)		CIRCLE-TO-LAND	
	Missed apch climb grad mim 3.0%			Missed apch climb grad mim 2.5%			CDFA		Not authorized East of runway	
	DA(H) 233'(200')			DA(H) AB: 263'(230') CD: 279'(246')			MDA(H) 460'(427')			
	FULL	Limited	ALS out	FULL	Limited	ALS out	ALS out	Max Kts	MDA(H)	VIS
A								100	860' (827')	2800m
B								135	860' (827')	3200m
C	RVR 550m VIS 800m	RVR 750m VIS 800m	1200m	RVR 600m VIS 800m	RVR 750m VIS 800m	1200m	2000m	180	1150'(1117')	4400m
D							2200m	205	1150'(1117')	5000m

ZSQD/TAO LIUTING

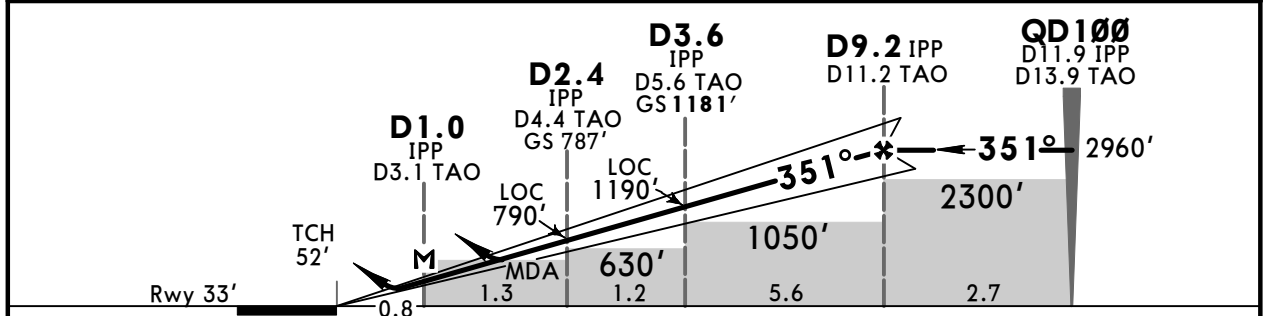
24 FEB 17
Eff 1 Mar 1600Z (11-3)

JEPPESSEN QINGDAO, PR OF CHINA RNAV ILS DME Z Rwy 35

D-ATIS 127.2	AP01 119.4	QINGDAO Approach(R) *AP02 121.15	*AP03 119.775	QINGDAO Tower 118.7	Ground 121.65
LOC IPP *111.7	Final Apch Crs 351°	GS D3.6 IPP 1181'(1148')	ILS DA(H) 233' (200')	Apt Elev 33' Rwy 33'	
MISSED APCH: Climb STRAIGHT AHEAD to D3.0 TAO to 830' or above, then turn RIGHT (MAX 190 KT) to reach TAO VOR at 2960' or above, or as directed.					
Alt Set: hPa		Rwy Elev: 1 hPa	Trans level: FL 118	Trans alt: 9850' 1	MSA TAO VOR



LOC (GS out)	IPP DME	2.0	3.0	4.0	5.0	6.0	7.0	8.0
	ALTITUDE	670'	990'	1310'	1630'	1950'	2270'	2580'



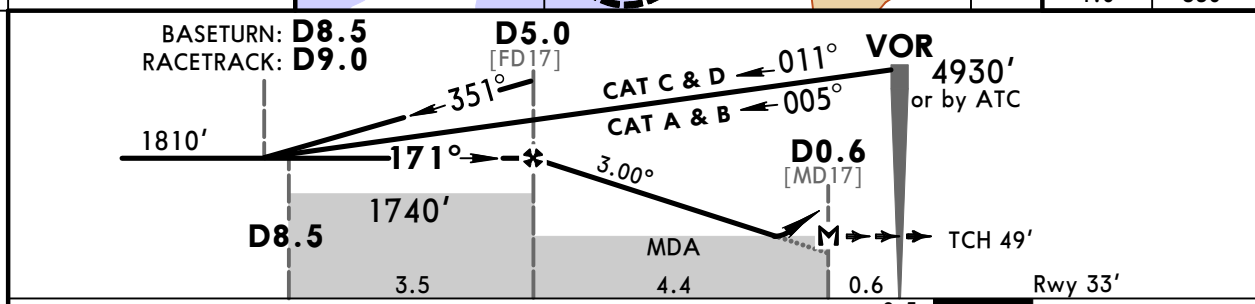
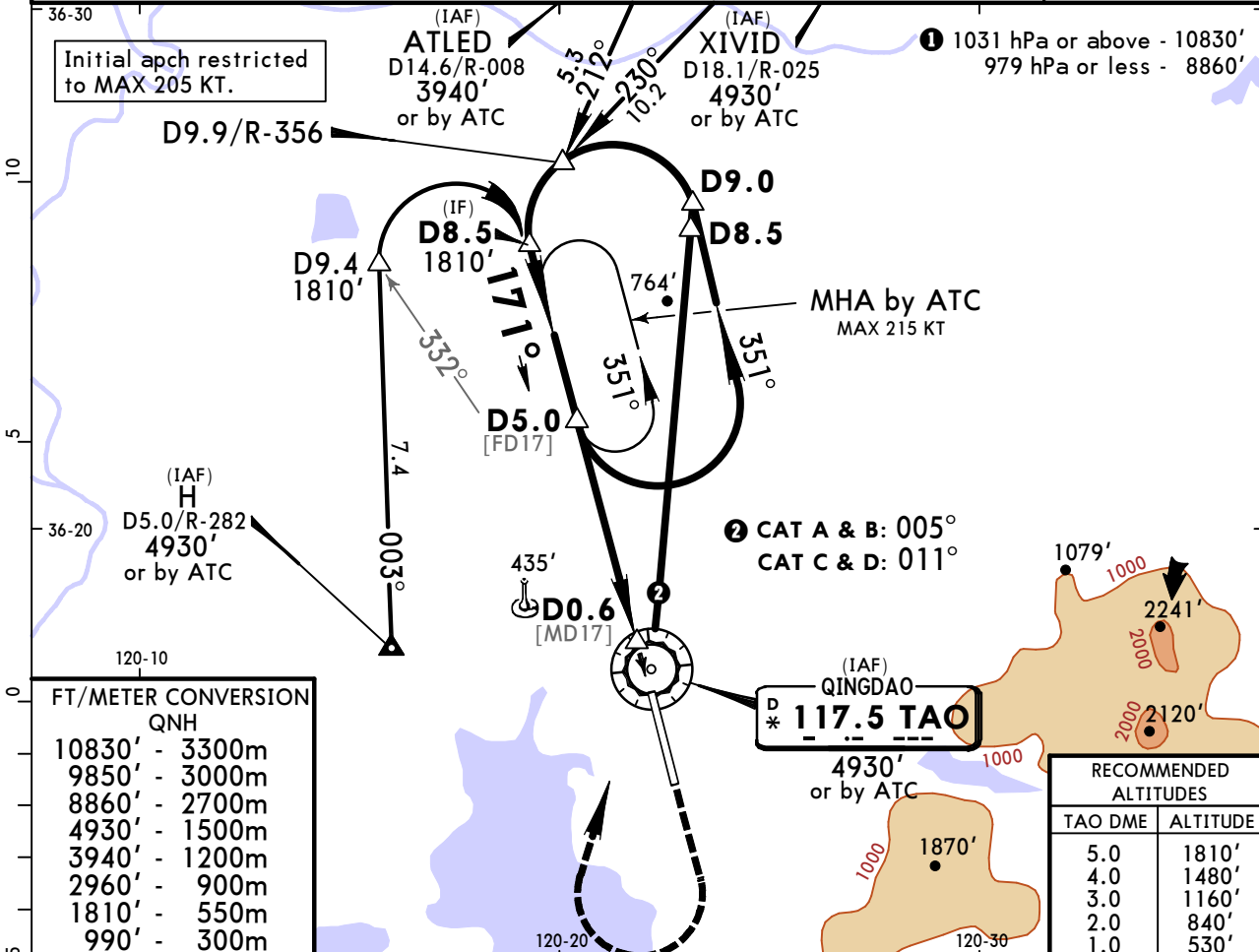
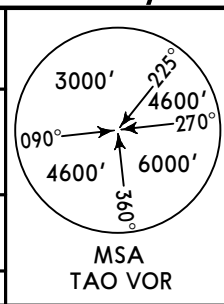
Gnd speed-Kts	70	90	100	120	140	160	HIALS PAPI 830' or above D3.0 TAO
ILS GS or LOC Descent Angle	3.00°	372	478	531	637	743	
MAP at D1.0 IPP/D3.1 TAO							

PANS OPS	STRAIGHT-IN LANDING				CIRCLE-TO-LAND	
	ILS		LOC (GS out)		Not authorized East of runway	
	DA(H) 233' (200')		MDA(H) 460' (427')			
	FULL	Limited	ALS out	ALS out	Max Kts	MDA(H) VIS
A				100	860' (827') 2800m	
B				135	860' (827') 3200m	
C	RVR 550m VIS 800m	RVR 750m VIS 800m	1200m		1150' (1117') 4400m	
D				205	1150' (1117') 5000m	

ZSQD/TAO LIUTING

24 FEB 17 **(13-1)** Eff 1 Mar 1600Z VOR DME Rwy 17

D-ATIS 127.2	AP01 119.4	QINGDAO Approach(R) *AP02 121.15	*AP03 119.775	QINGDAO Tower 118.7	Ground 121.65
VOR TAO *117.5	Final Apch Crs 171°	Procedure Alt D5.0 1810' (1777')	MDA(H) 500' (467')	Apt Elev 33' Rwy 33'	
MISSED APCH: Climb STRAIGHT AHEAD to 990', then turn RIGHT (MAX 190 KT) to reach VOR at 2960', or as directed.					
Alt Set: hPa		Rwy Elev: 1 hPa		Trans level: FL 118	
				Trans alt: 9850' ①	



Gnd speed-Kts	70	90	100	120	140	160	HIALS PAPI 990' ↑ 190 KT MAX TAO 117.5 2960' ↑
Descent Angle 3.00°	372	478	531	637	743	849	
MAP at D0.6							

	STRAIGHT-IN LANDING		CIRCLE-TO-LAND	
	CDFA	ALS out	Not authorized East of runway	
	MDA(H) 500' (467')			
A			Max Kts	
B	2000m		100	860' (827') 2800m
C	2200m		135	860' (827') 3200m
D	2400m		180	1150' (1117') 4400m
			205	1150' (1117') 5000m

PANS OPS

Chart changes since cycle 15-2021

ADD = added chart, REV = revised chart, DEL = deleted chart.

ACT	PROCEDURE IDENT	INDEX	REV DATE	EFF DATE
QINGDAO, (LIUTING - ZSQD)				
REV	AIRPORT BRIEFING (GEN)	10-1P	30 Jul 2021	11 Aug 2021
DEL	AIRPORT BRIEFING (ARR, DE...	10-1P1	30 Jul 2021	11 Aug 2021
ADD	AIRPORT BRIEFING (GEN CON...	10-1P1	30 Jul 2021	11 Aug 2021
ADD	AIRPORT BRIEFING (ARR CON...	10-1P2	30 Jul 2021	11 Aug 2021
ADD	AIRPORT BRIEFING (DEP)	10-1P3	30 Jul 2021	11 Aug 2021
DEL	FD & GOD 51F & 53F RNAV A...	10-2	06 Aug 2021	11 Aug 2021
ADD	HCH 81A & 82A, IDV & LAT ...	10-2	06 Aug 2021	11 Aug 2021
ADD	HCH, IDV & LAT 91A RNAV A...	10-2A	06 Aug 2021	11 Aug 2021
DEL	IDV & LAT 51F, 53F, 55F &...	10-2A	06 Aug 2021	11 Aug 2021
ADD	DYN & WFG 81A RNAV ARRS	10-2B	06 Aug 2021	11 Aug 2021
DEL	FD & GOD 52F & 54F RNAV A...	10-2B	06 Aug 2021	11 Aug 2021
ADD	DYN 91A, WFG 91A & 92A RN...	10-2C	06 Aug 2021	11 Aug 2021
DEL	IDV & LAT 52F & 54F RNAV ...	10-2C	06 Aug 2021	11 Aug 2021
DEL	FD & GOD 1A ARRS	10-2D	06 Aug 2021	11 Aug 2021
ADD	HCH, IDV & LAT 01A ARRS	10-2D	06 Aug 2021	11 Aug 2021
ADD	HCH, IDV & LAT 11A ARRS	10-2E	06 Aug 2021	11 Aug 2021
DEL	IDV & LAT 1A & 3A ARRS	10-2E	06 Aug 2021	11 Aug 2021
ADD	DYN 01A, WFG 01A & 02A AR...	10-2F	06 Aug 2021	11 Aug 2021
DEL	FD 2A & 4A, GOD 2A ARRS	10-2F	06 Aug 2021	11 Aug 2021
ADD	DYN & WFG 11A ARRS	10-2G	06 Aug 2021	11 Aug 2021
DEL	IDV & LAT 2A ARRS	10-2G	06 Aug 2021	11 Aug 2021
DEL	FD 61X & 63X RNAV DEPS	10-3	06 Aug 2021	11 Aug 2021
ADD	TEK 81D RNAV DEP	10-3	06 Aug 2021	11 Aug 2021
DEL	IDV 61X & 63X, LAT 61X RN...	10-3A	06 Aug 2021	11 Aug 2021
ADD	TEK 91D RNAV DEP	10-3A	06 Aug 2021	11 Aug 2021
ADD	LAT 81D RNAV DEP	10-3B	06 Aug 2021	11 Aug 2021
DEL	YO 61X & 63X RNAV DEPS	10-3B	06 Aug 2021	11 Aug 2021
DEL	FD 62X RNAV DEP	10-3C	06 Aug 2021	11 Aug 2021
ADD	LAT 91D RNAV DEP	10-3C	06 Aug 2021	11 Aug 2021
ADD	DOV & DYN 81D & 82D, WFG ...	10-3D	06 Aug 2021	11 Aug 2021
DEL	IDV 62X & 64X, LAT 62X, 6...	10-3D	06 Aug 2021	11 Aug 2021
ADD	DOV, DYN & WFG 91D RNAV D...	10-3E	06 Aug 2021	11 Aug 2021
DEL	YO 62X & 64X RNAV DEPS	10-3E	06 Aug 2021	11 Aug 2021
DEL	FD 12D & 14D DEPS	10-3F	06 Aug 2021	11 Aug 2021
ADD	TEK 01D DEP	10-3F	06 Aug 2021	11 Aug 2021
DEL	IDV & LAT 12D DEPS	10-3G	06 Aug 2021	11 Aug 2021
ADD	TEK 11D DEP	10-3G	06 Aug 2021	11 Aug 2021
ADD	LAT 01D DEP	10-3H	06 Aug 2021	11 Aug 2021
DEL	YO 12D DEP	10-3H	06 Aug 2021	11 Aug 2021
DEL	FD 11D DEP	10-3J	06 Aug 2021	11 Aug 2021
ADD	LAT 11D DEP	10-3J	06 Aug 2021	11 Aug 2021
ADD	DOV, DYN & WFG 01D & 02D ...	10-3K	06 Aug 2021	11 Aug 2021
DEL	IDV & LAT 11D DEPS	10-3K	06 Aug 2021	11 Aug 2021
ADD	DOV & DYN 11D & 12D, WFG ...	10-3L	06 Aug 2021	11 Aug 2021
DEL	YO 11D & 13D DEPS	10-3L	06 Aug 2021	11 Aug 2021
ADD	AIRPORT	10-9	30 Jul 2021	11 Aug 2021
DEL	AIRPORT, AIRPORT INFO, TA...	10-9	30 Jul 2021	11 Aug 2021
ADD	AIRPORT INFO, HOT SPOTS, ...	10-9A	30 Jul 2021	11 Aug 2021
DEL	PARKING POSITIONS	10-9A	30 Jul 2021	11 Aug 2021
DEL	HOT SPOTS	10-9B	30 Jul 2021	11 Aug 2021
ADD	PARKING POSITIONS	10-9B	30 Jul 2021	11 Aug 2021
ADD	LVOP TAXI ROUTES (ARR TO ...	10-9C	30 Jul 2021	11 Aug 2021
ADD	LVOP TAXI ROUTES (DEP TO ...	10-9D	30 Jul 2021	11 Aug 2021
ADD	LVOP TAXI ROUTES (ARR TO ...	10-9E	30 Jul 2021	11 Aug 2021
ADD	LVOP TAXI ROUTES (DEP TO ...	10-9F	30 Jul 2021	11 Aug 2021

ADD RNAV ILS DME Z RWY 16	11-1	30 Jul 2021	11 Aug 2021
DEL RNAV ILS DME Z RWY 17	11-1	30 Jul 2021	11 Aug 2021
DEL RNAV TRANSITIONS TO RNAV ...	11-1A	30 Jul 2021	11 Aug 2021
ADD CAT II RNAV ILS DME Z RWY...	11-1A	30 Jul 2021	11 Aug 2021
ADD ILS DME Y RWY 16	11-2	30 Jul 2021	11 Aug 2021
DEL ILS DME Y RWY 17	11-2	30 Jul 2021	11 Aug 2021
ADD CAT II ILS DME Y RWY 16	11-2A	30 Jul 2021	11 Aug 2021
ADD SA CAT I RNAV ILS DME Z R...	11-2B	30 Jul 2021	11 Aug 2021
ADD SA CAT I ILS DME Y RWY 16	11-2C	30 Jul 2021	11 Aug 2021
ADD RNAV ILS DME Z RWY 17	11-3	30 Jul 2021	11 Aug 2021
DEL RNAV ILS DME Z RWY 35	11-3	30 Jul 2021	11 Aug 2021
ADD CAT II RNAV ILS DME Z RWY...	11-3A	30 Jul 2021	11 Aug 2021
ADD ILS DME Y RWY 17	11-4	30 Jul 2021	11 Aug 2021
DEL ILS DME Y RWY 35	11-4	30 Jul 2021	11 Aug 2021
ADD CAT II ILS DME Y RWY 17	11-4A	30 Jul 2021	11 Aug 2021
ADD SA CAT I RNAV ILS DME Z R...	11-4B	30 Jul 2021	11 Aug 2021
ADD SA CAT I ILS DME Y RWY 17	11-4C	30 Jul 2021	11 Aug 2021
ADD RNAV ILS DME Z RWY 34	11-5	30 Jul 2021	11 Aug 2021
ADD ILS DME Y RWY 34	11-6	30 Jul 2021	11 Aug 2021
ADD SA CAT I & SA CAT II RNAV...	11-6A	30 Jul 2021	11 Aug 2021
ADD SA CAT I & SA CAT II ILS ...	11-6B	30 Jul 2021	11 Aug 2021
ADD RNAV ILS DME Z RWY 35	11-7	30 Jul 2021	11 Aug 2021
ADD ILS DME Y RWY 35	11-8	30 Jul 2021	11 Aug 2021
ADD SA CAT I & SA CAT II RNAV...	11-8A	30 Jul 2021	11 Aug 2021
ADD SA CAT I & SA CAT II ILS ...	11-8B	30 Jul 2021	11 Aug 2021
REV VOR DME RWY 17	13-1	30 Jul 2021	11 Aug 2021
REV VOR DME RWY 35	13-2	30 Jul 2021	11 Aug 2021

TERMINAL CHART CHANGE NOTICES

Chart Change Notices for Airport ZSQD

Type: Terminal

Effectivity: Temporary

Begin Date: Immediately

End Date: 20210811

Airport name is still Liuting.

Chart Change Notices for Country CHN

Type: Gen Tmnl

Effectivity: Temporary

Begin Date: 20210716

End Date: Until Further Notice

ZBAA, ZLXY and ZSPD: For Wake Turbulence Re-Categorization (RECAT-CN) Separation Standards see ATC pages.